



# WORKING PAPER

## REGIONAL GROSS DOMESTIC PRODUCT Regions and areas of the Republic of Serbia, 2023



No **131**

Belgrade, 2025



# REGIONAL GROSS DOMESTIC PRODUCT

## Regions and areas of the Republic of Serbia, 2023

Working paper: REGIONAL GROSS DOMESTIC PRODUCT – Regions and areas of the Republic of Serbia, 2023

Publishers: Statistical Office of the Republic of Serbia Belgrade, 5, Milana Rakića St  
For the publishers: Branko Josipović, Acting Director

Editorial Board

Editor in Chief: Snežana Lakčević

Members: Ljiljana Đorđević, Gordana Bjelobrč, Dijana Dodig Bukilica and Dejana Đorđević

Text editing: Dušan Gavrilović, Dijana Dodig Bukilica, Marija Vulović, Jovana Ćosić and Ivana Stanojković

Design and press preparatory operations: SORS Division for statistical output development and visualization

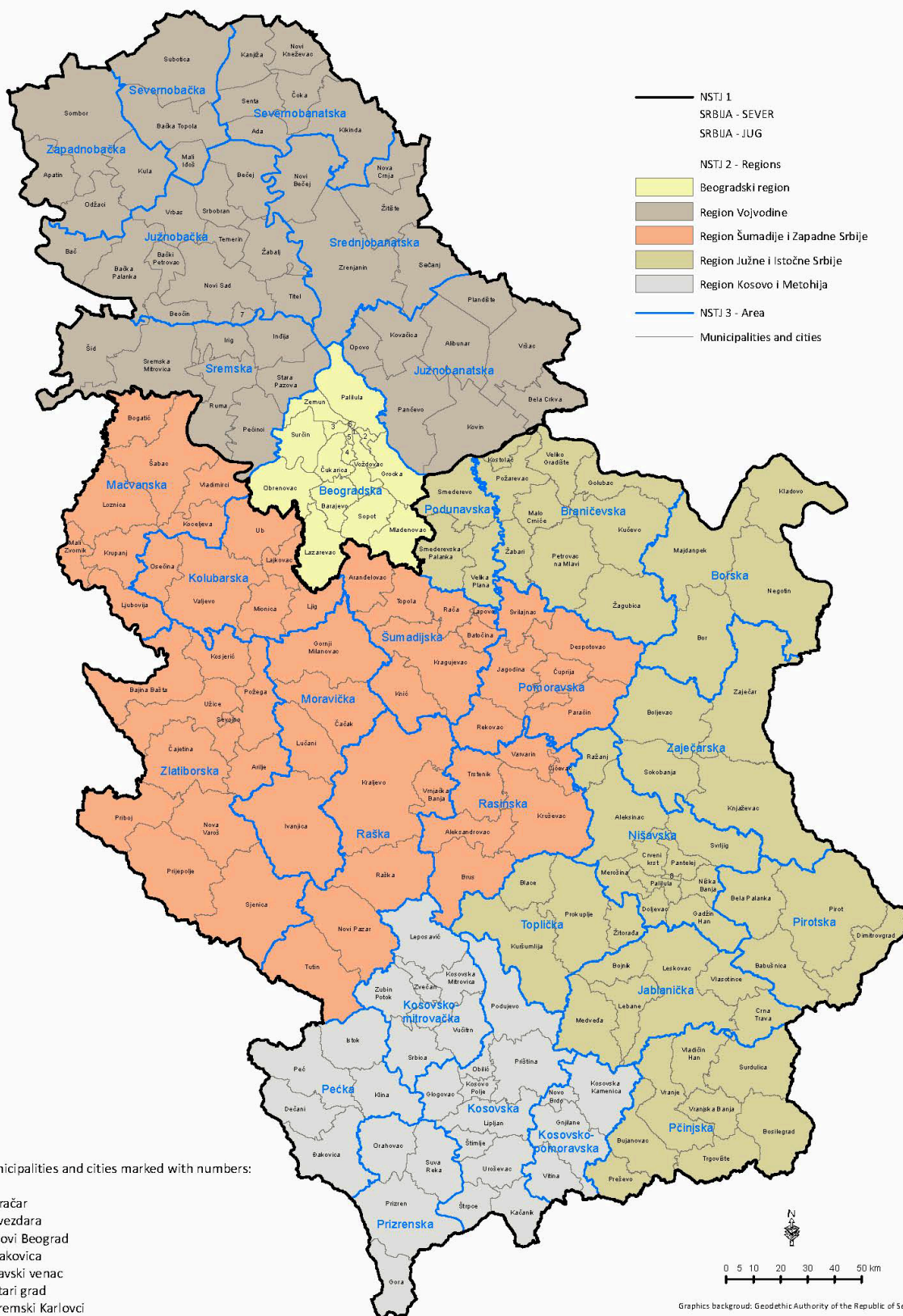
English translation: Gordana Nedeljković

## TABLE OF CONTENTS

Municipalities and cities/towns of the Republic of Serbia, by areas and regions, state as of 1 January 2024.....	5
Municipalities and cities/towns of the Republic of Serbia, by administrative districts, state as of 1 January 2024 .....	6
Towns/cities and municipalities of the Republic of Serbia, state as of 1 January 2024 .....	7
Introductory notes.....	8
Main methodological principles.....	8
Methods of regionalization.....	9
Data sources .....	10
Results of calculation – regional GDP, shares of regions in total GDP of the Republic of Serbia and level indices.....	11
Table 1. Results of calculation – regional GDP, shares of regions in total GDP of the Republic of Serbia and level indices .....	11
Table 2. Regional GDP expressed in PPS .....	14
Areas of the Republic of Serbia – GVA, shares in total GVA of the Republic of Serbia and level indices .....	15
Table 3. Areas of the Republic of Serbia – GVA, shares in total GVA of the Republic of Serbia and level indices .....	15
Regional GVA by activity .....	18
Table 4. Regions of the Republic of Serbia – Regional GVA by activity, 2023 (RSD million).....	18
Table 5. Region Vojvodine and areas – Regional GVA by activity, 2023 (RSD million) .....	19
Table 6. Region Šumadije i Zapadne Srbije and areas – Regional GVA by activity, 2023 (RSD million).....	20
Table 7. Region Južne i Istočne Srbije and areas – Regional GVA by activity, 2023 (RSD million).....	21
Regional GVA by activity, 2022 (revised data) .....	22
Table 8. Regions of the Republic of Serbia – Regional GVA by activity, 2022 (RSD million).....	22
Table 9. Region Vojvodine and areas – Regional GVA by activity, 2022 (RSD million) .....	22
Table 10. Region Region Šumadije i Zapadne Srbije and areas – Regional GVA by activity, 2022 (RSD million).....	23
Table 11. Region Južne i Istočne Srbije and areas – Regional GVA by activity, 2022 (RSD million).....	23



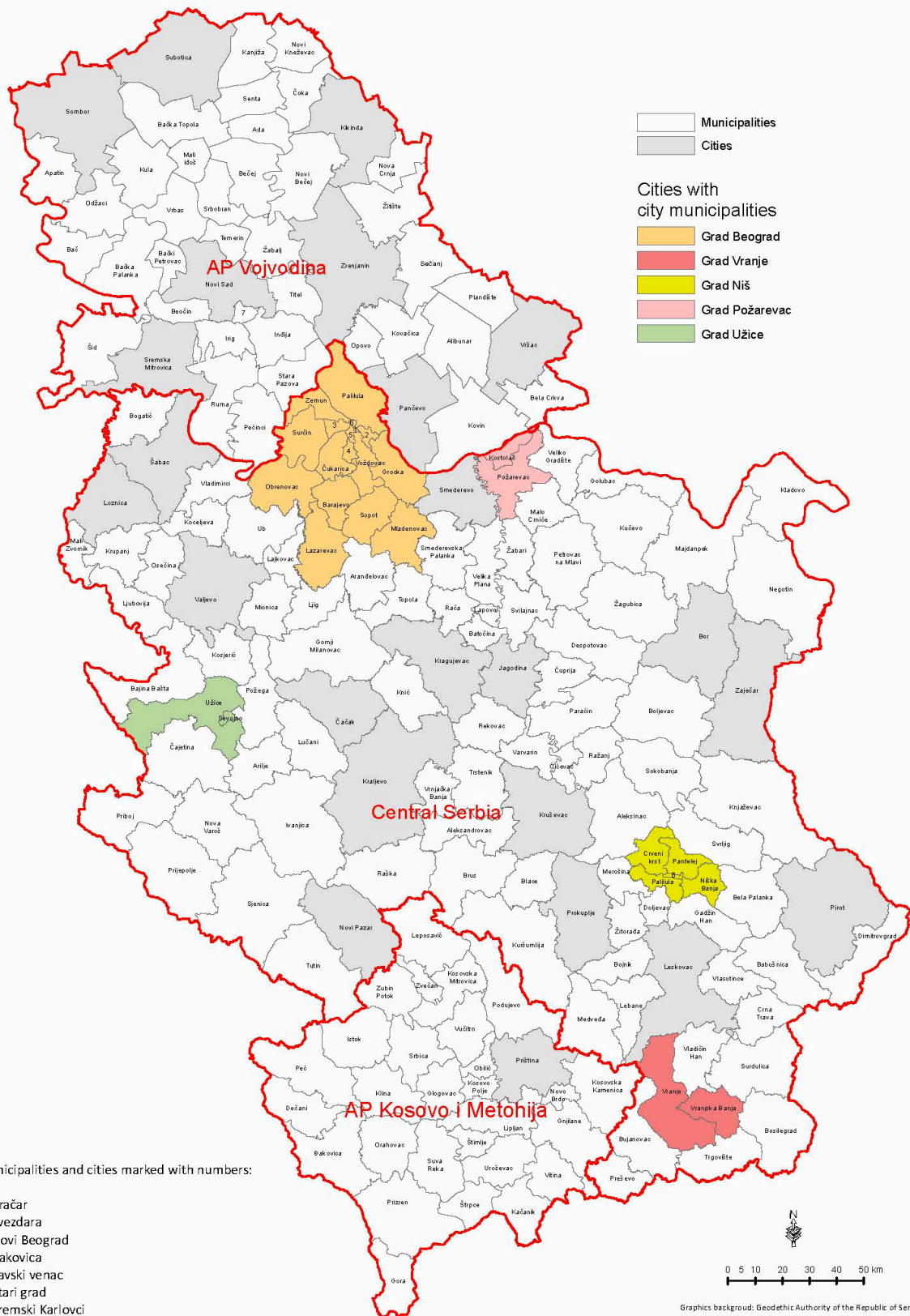
**Map 1.** Municipalities and cities/towns of the Republic of Serbia, by areas and regions, state as of 1 January 2024



**Map 2. Municipalities and cities/towns of the Republic of Serbia, by administrative districts, state as of 1 January 2024**



**Map 3. | Towns/cities and municipalities of the Republic of Serbia, as of 1 January 2024**



## INTRODUCTORY NOTES

Measurement of regional economic performance has always been among the priorities in the statistical system of the European Union (EU) and has become increasingly important in the Republic of Serbia due to severe regional discrepancies in economic and social development. These discrepancies are caused mainly by the differences in economic structure, productivity of labour force and efficiency of business operations of economic subjects in the Republic of Serbia. Regional accounts, as a system of regional statistical indicators, are thus regarded as indispensable tools for strategic planning of regional development and effective regional policymaking, as well as for evaluation and monitoring of plans and programs of cohesive policy on the national and the European level. Regional gross domestic product (GDP) is regarded as the headline indicator used for measuring the regional economic performances and the effectiveness of the regional policies and programs aimed at reducing the gaps between the regions in socio-economic development and distribution of the national wealth.

This paper summarizes the concepts, sources and methods used in the process of estimation of the regional gross domestic product (GDP) of the Republic of Serbia for the year 2023, along with the revised data for 2022 and 2021, aligned with the results of the national GDP revision implemented in 2024.

## MAIN METHODOLOGICAL PRINCIPLES

The calculation of regional GDP, as a part of the system of national accounts of the Republic of Serbia, was made in accordance with EU principles and methodology, i.e. the *European system of national accounts* (ESA 2010) and the *Nomenclature of statistical territorial units* of the Republic of Serbia (*NSTJ*), which has been harmonized with the European Nomenclature of territorial units for statistics (NUTS). The main conceptual reference for the Serbian regional GDP is the Eurostat's *Regional Accounts Methods* manual. The calculations of regional GDP were carried out at the NUTS level 2 (regions) and NUTS level 3 (areas) for the following statistical territorial units:

- Beogradski region/area
- Region Vojvodine and areas: Zapadnobačka oblast, Južnobanatska oblast, Južnobačka oblast, Severnobanatska oblast, Severnobačka oblast, Srednjobanatska oblast and Sremska oblast;
- Region Šumadije i Zapadne Srbije and areas: Zlatiborska oblast, Kolubarska oblast, Mačvanska oblast, Moravička oblast, Pomoravska oblast, Rasinska oblast, Raška oblast and Šumadijska oblast.
- Region Južne i Istočne Srbije and areas: Borska oblast, Braničevska oblast, Zaječarska oblast, Jablanička oblast, Nišavska oblast, Pirotska oblast, Podunavska oblast, Pčinjska oblast and Toplička oblast.

Presently, for Region Kosovo i Metohija no reliable statistical data are available and it was not covered by the calculations. In accordance with the ESA 2010 and the Eurostat methodology of regional accounts, as a separate statistical territorial unit displayed is "*extra regio*", i.e. extraterritorial units of the Republic of Serbia (ESA 2010, paragraph 13.11). Those are diplomatic and consular missions, embassies of the Republic of Serbia abroad and in other parts of the economic territory of the Republic of Serbia outside its territorial boundaries. Gross value added calculation for *extra regio* is based on data from the Ministry of Foreign Affairs of the Republic of Serbia on the employed citizens of the Republic of Serbia in these units. According to ESA 2010 (paragraph 13.44), data on GDP per capita and the corresponding indices are not expressed for *extra regio*.

Regional gross domestic product is the regional equivalent to a country's GDP which represents the most important macroeconomic aggregate of a national economy and measure of its productivity and efficiency in the production of goods and services needed for various types of consumption. The sum of GDP for each region is identical to the GDP of the Republic of Serbia. Gross value added created by all resident economic subjects of the Republic of Serbia is a starting point for the calculation of GDP and its regionalization i.e. estimation of the contribution of each regional entity to the total GDP. The relation between GDP, gross value added (GVA) and regional GDP can be shown using the following equations:

GDP – the sum of gross value added of the institutional sectors or of the industries, plus taxes on products and imports and less subsidies on products (subsidies directly linked to the volume or value of production).

GVA – the total value of output of goods and services produced less the intermediate consumption (goods and services used up in the production process in order to produce the output).

Regional GDP – the sum of value added of all local units that are active in the territory of the subject region (plus taxes on products less subsidies on products).

## METHODS OF REGIONALIZATION

The regionalization of gross value added (GVA) is based on the *workplace principle* i.e. by using the economic data on local units of enterprises where the value added is actually created. This principle of regionalization of GVA has special significance if we take into account the fact that the large economic systems representing the „backbone“ of the Serbian economy (including large public enterprises and government bodies and institutions) have in general wide geographic dispersion of their organizational units (plants, establishments, offices etc.), and each of them represents a significant centre of economic activity on the territory of the municipality and region where it is situated. GVA of these enterprises is allocated on the regions where their local units and employees are situated and where the production process has taken place and not in the regions where their headquarters are registered.

For business enterprises belonging to the sector of non-financial corporations, so called “bottom up” method was used as the main technique for regionalization of GVA in line with the experience and methodology of the Swedish statistics. The same principle is applied for non-profit institutions serving households. For financial institutions, the data on wages and salaries, together with the data on deposits and credits (for banks) and gross premiums written (for insurance business) on municipal level were used for the regionalization of GVA of each enterprise in full accordance with the Eurostat’s recommendations. For the general government sector, the data on wages and salaries collected via special survey are used for the distribution of GVA of each entity on its belonging local units on municipal level.

The starting point for the calculations of regional GDP represents the SBR of local units of enterprises which is managed and operated by the SORS. The large majority of companies and sole-proprietorships are mono-unit enterprises or with a few units operating within the same municipality. For these enterprises GVA is directly ascribed to the region of the headquarters of the enterprise i.e. municipality where it is registered and conducts its business activities. On the other side, the “regional profile” of each enterprise conducting economic activity in more than one municipality is defined by comparison and cross-checking of the data derived from several statistical and administrative data sources. The data on local units (NACE and municipality code, number of employment and wages and salaries) are thoroughly checked and determined the number of employed, staff costs and then the share of each local unit in the GVA of the enterprise it belongs to. All enterprises with more than one local unit in different municipalities were processed this way thus founding the basis for regional distribution of GVA and, eventually, the derivation of regional aggregates.

Having calculated the GVA on the level of each local unit, the area and regional figures are derived by aggregating the GVA of all local units belonging to the same area and region.

## DATA SOURCES

Apart from financial statements as primary data source, for deriving regional GDP calculations the following administrative and statistical data sources are used:

- For the non-financial sector of incorporated enterprises – a regional data module within the annual structural business survey with data on number of employees, gross wages and salaries and other economic indicators for local units of enterprises on municipality level are collected. Moreover, this module includes data on stocks of capital goods and depreciation costs on local unit level. As supplementary sources used were the data of the Central Register of Social Contributions Payers (CRSCP) on the number of employment in local units of enterprises and the statistical survey on local units of economic subject.
- For the financial sector (banks and the central bank, i.e. the National Bank of Serbia, insurance companies, companies for financial leasing, pension and investment funds, broker and dealer companies and other financial institutions) – the annual survey KGI-02, which compiles data for financial institutions on the level of local units: data on number of local units, employment and wages and salaries on municipality level. Also, it covers data on loans, deposits and commissions and fees (for the banks) and gross premiums written (for insurance business), also on municipality level, which are used as key tools for the regionalization of GVA of institutional units belonging to the financial corporations sector, namely for value added allocation to local units.
- For the general government sector, i.e. government bodies and institutions – KGI-03 survey that annually collects data on employees from the CRSCP database. In order to collect data on distribution of employees and wages and salaries by municipalities, the SORS Regional accounts division has conducted a survey which covers the major government institutions with the largest territorial dispersion of the units. The following institutions were covered by this special survey: Ministry of the Interior, Ministry of Defence, State Tax Administration, State Customs Administration, National Employment Service, Pension and Disability Insurance Fund, National Health Insurance Fund, Serbian Statistical Office (SORS), Hydro-meteorological Office, Republic Geodetic Authority and PE Post of Serbia. The GVA calculations for non-market institutional units that belong to the government sector are implemented by applying the expenditure approach in compliance with the ESA 2010 methodology.
- For the households sector – data provided by the Tax Administration on tax payers based on income from own-account activities and estimations based on statistical surveys concerning economic activities. Apart from unincorporated enterprises (sole proprietorships and partnerships), this sector includes other self-employed persons, such as persons who achieve contracted fee as the only income source ("outworkers") and farmers. In addition, the GDP of household sector covers net receipts from renting, i.e. household income resulting from the private renting of dwellings. Namely, according to the principles of national accounts, this income includes also so-called imputed rentals for owner occupied dwellings, i.e. imputed value of income that could be received by owners of private dwellings by renting them to other persons. This estimate is based on the data on dwelling stock on the territory of certain region and on average unit price of real estates.
- For the sector of non-profit institutions serving households (NGOs, non-market citizen associations and organizations etc.) – database of financial statements for other legal entities and employment data for their local units provided by CRSCP.

For each of these institutional sectors the specific methods for calculating output value (market and non-market output) and value added were applied, in accordance with the methodological guidelines provided by ESA 2010.

## ◆ Results of calculation – regional GDP, shares of regions in total GDP of the Republic of Serbia and level indices

**Table 1.** Results of calculation – regional GDP, shares of regions in total GDP of the Republic of Serbia and level indices

Territory	GDP (RSD million)		Index	Share (%)		GDP per capita (RSD thousand)		GDP per capita – Level Index (RS = 100)	
	2023	2022	2023/2022	2023	2022	2023	2022	2023	2022
<b>REPUBLIC OF SERBIA</b>	<b>8 817 763</b>	<b>7 458 762</b>	<b>118.2</b>	<b>100.0</b>	<b>100.0</b>	<b>1 331</b>	<b>1 119</b>	<b>100.0</b>	<b>100.0</b>
Beogradski region	3 822 081	3 044 599	125.5	43.3	40.8	2 271	1 808	170.6	161.5
Region Vojvodine	2 167 172	1 892 858	114.5	24.6	25.4	1 250	1 085	93.9	97.0
Region Šumadije i Zapadne Srbije	1 495 218	1 352 750	110.5	17.0	18.1	826	741	62.1	66.2
Region Južne i Istočne Srbije	1 330 337	1 165 741	114.1	15.1	15.6	953	826	71.6	73.8
<i>Extra regio</i>	2 955	2 814	105.0	0.0	0.0	-	-	-	-
Region Kosovo i Metohija	...	...	...	...	...	...	...	...	...

According to the estimation principle of workplace, the regions of the Republic of Serbia had the following shares in the national GDP: Beogradski region holds the leading position with 43.3%; Region Vojvodine expressed the share of 24.6%, and then come Region Šumadije i Zapadne Srbije – 17.0% and Region Južne i Istočne Srbije – 15.1%.

For Beogradski region, with GDP per capita amounting to RSD 2 271 000 (EUR 19 366)<sup>1</sup>, notable is by 70.6% higher per capita amount compared to the national average. The GDP per capita level index for Region Vojvodine equals 93.9% (RSD 1 250 000/EUR 10 658), which is approximately by 3.1% lower if compared to 2022. The GDP per capita level index for Region Šumadije i Zapadne Srbije equals 62.1% (RSD 826 000/EUR 7 047), which means it decreased by 4.1% when related to 2022. For Region Južne i Istočne Srbije the level index equals 71.6% (RSD 953 000/EUR 8 127), which is by 2.2% lower when related to 2022.

Regarding the dispersion of the regional GDP per capita amount, in 2023 it equalled 36%, i.e. was slightly lower compared to 2022 (31%). Concerning the level of areas (districts), it equals 42% (38% in 2022). According to the Eurostat methodology, the dispersion of regional GDP per capita indicates the average (absolute) difference between national and regional GDP per capita values. The higher value of this indicator points out higher regional dispersion of GDP, namely larger regional differences in the GDP per capita level.<sup>2</sup>

<sup>1</sup> Average official exchange rate of the National Bank of Serbia for the year 2023.

<sup>2</sup> Dispersion of regional gross domestic product is a measure of cohesion of economic development of regions shows the average difference between the national and regional levels of GDP per capita. This indicator is available at NUTS 2 and NUTS 3 level, ie. at levels NSTJ2 (region) and NSTJ3 (district) of the *National Nomenclature of Territorial Units for Statistics*. Dispersion of regional gross domestic product is measured by the sum of the absolute differences between regional and national GDP per inhabitant, weighted with the regional share of population and expressed in percent of the national GDP per inhabitant.

For a given country the dispersion D of regional GDP per inhabitant is defined as the sum of the absolute differences between regional and national GDP per inhabitant, weighted with the regional share of population and expressed in percent of the national GDP per inhabitant:

$$D = \frac{100}{Y} \sum_{i=1}^n |y_i - Y| \left( \frac{p_i}{P} \right)$$

In the above equation:

$y_i$  - regional GDP per inhabitant of region  $i$ ;

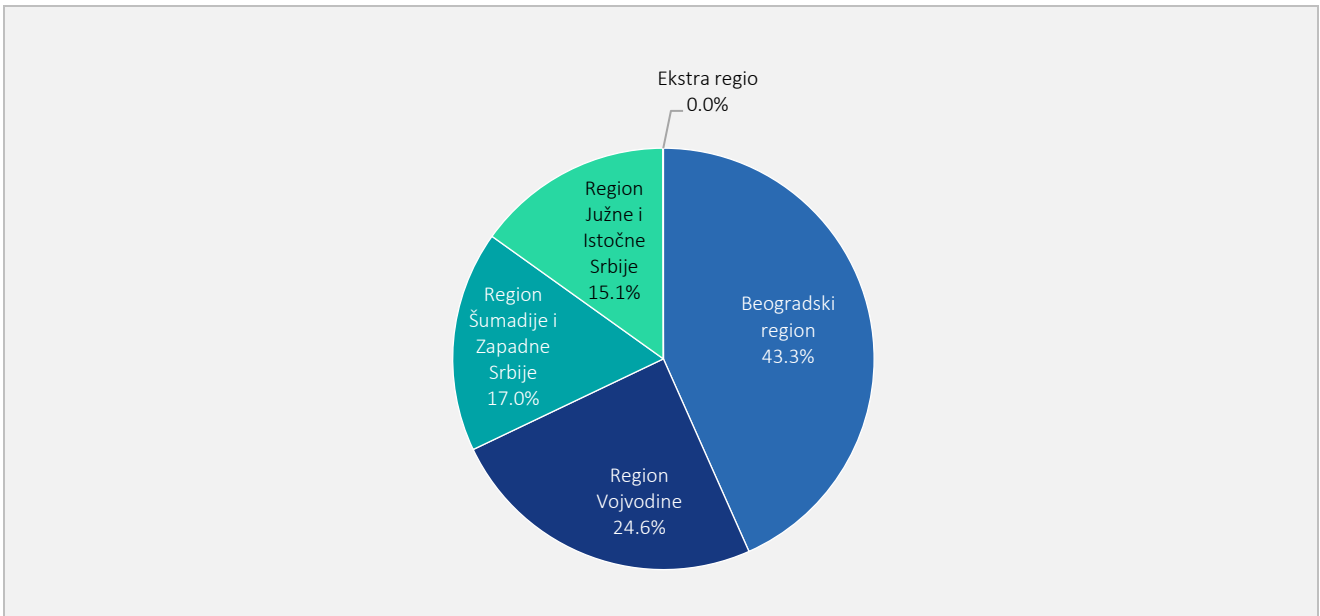
$Y$  - national average GDP per inhabitant;

$p_i$  - population of the region/area  $i$

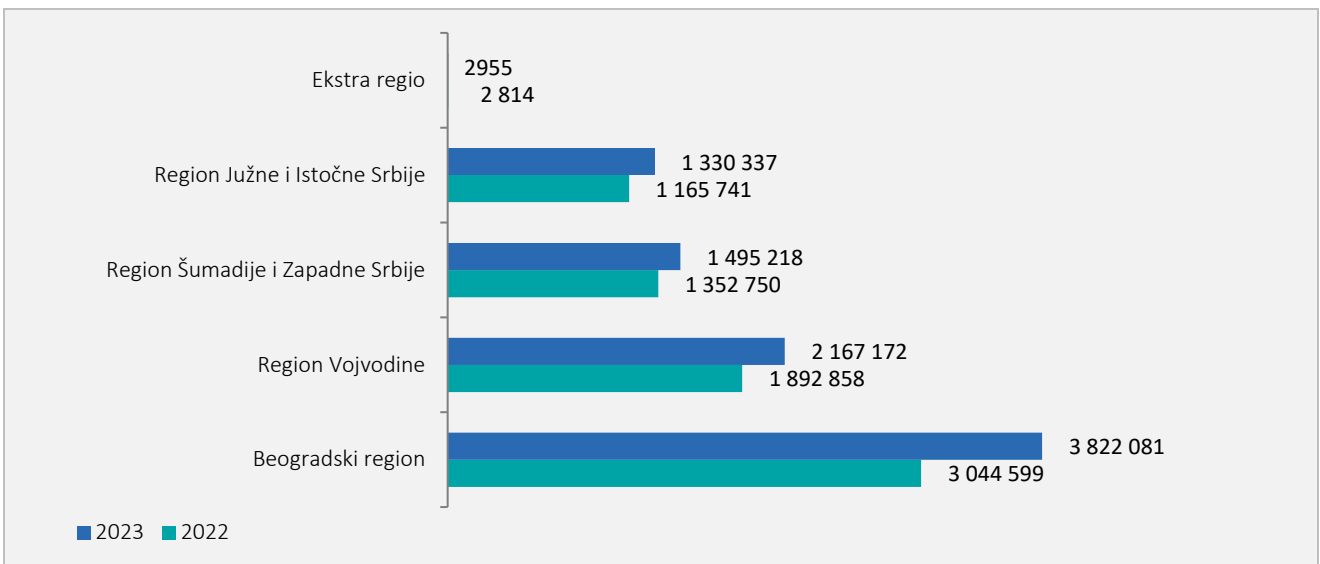
$P$  - population of the country

$n$  - number of regions/areas

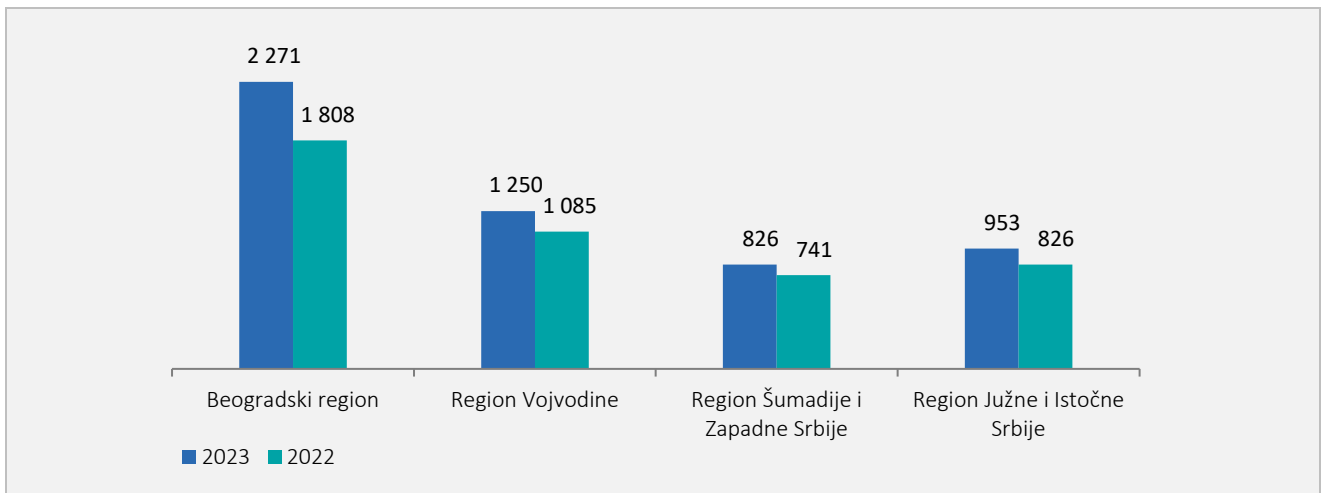
Graph. 1. Shares of regions in the national GDP, 2023



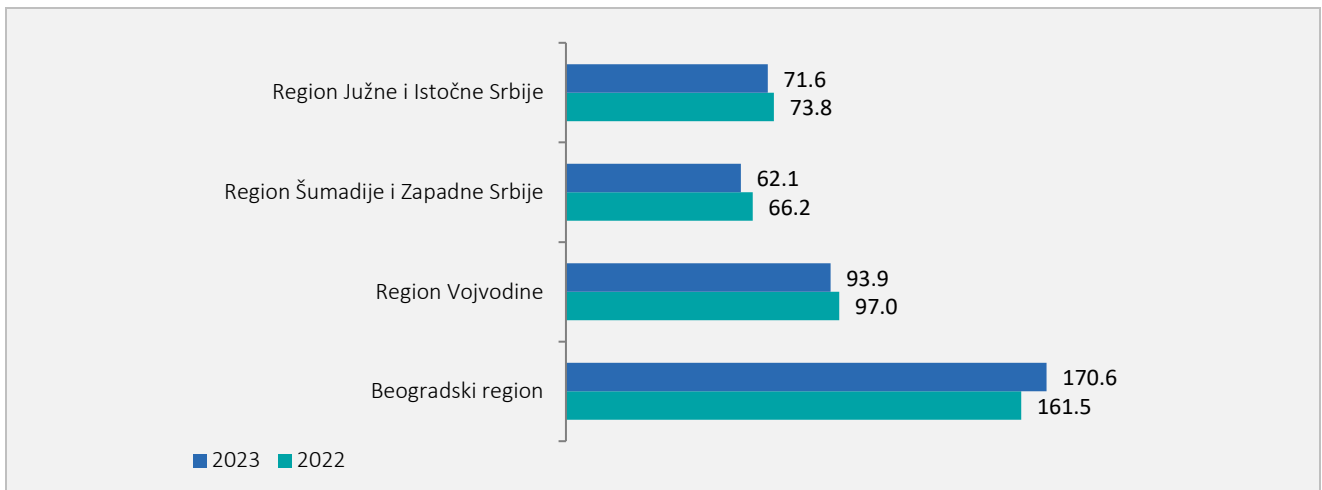
Graph. 2. Regional GDP, 2023–2022 (RSD million)



Graph. 3. Regions of the Republic Serbia – GDP per capita, 2023–2022 (RSD thousand)



Graph. 4. Regions of the Republic of Serbia – GDP per capita – Level index (RS = 100), 2023–2022 (%)



## ◆ Regional GDP expressed in PPS

In the following table, the regional GDP expressed in PPS (purchasing power standard) and the comparison of the Serbian regions with EU27 indicators are presented. As we can see, all the regions are below the 85% limit of the GDP average per capita in the EU. The leading Beogradski region is at 83.4%, while Region Šumadije i Zapadne Srbije is at 30.4%.

**Table 2.** Regional GDP expressed in PPS

Territory	GDP (PPS million)		Share (%)		GDP per capita (PPS thousand)		Level Index (EU-28 = 100)	
	2023	2022	2023	2022	2023	2022	2023	2022
<b>EU-27</b>	<b>17 193 783</b>	<b>16 143 751</b>	<b>100.0</b>	<b>100.0</b>	<b>38.1</b>	<b>36.0</b>	<b>100.0</b>	<b>100.0</b>
<b>REPUBLIC OF SERBIA</b>	<b>123 539</b>	<b>109 630</b>	<b>0.7</b>	<b>0.7</b>	<b>18.7</b>	<b>16.4</b>	<b>48.9</b>	<b>45.7</b>
Beogradski region	53 548	44 750	0.3	0.3	31.8	26.6	83.4	73.8
Region Vojvodine	30 363	27 822	0.2	0.2	17.5	16.0	45.9	44.3
Region Šumadije i Zapadne Srbije	20 948	19 883	0.1	0.1	11.6	10.9	30.4	30.3
Region Južne i Istočne Srbije	18 638	17 134	0.1	0.1	13.3	12.1	35.0	33.7
<i>Extra regio</i>	41	41	0.0	0.0	...	...	...	...
Region Kosovo i Metohija	...	...	...	...	...	...	...	...

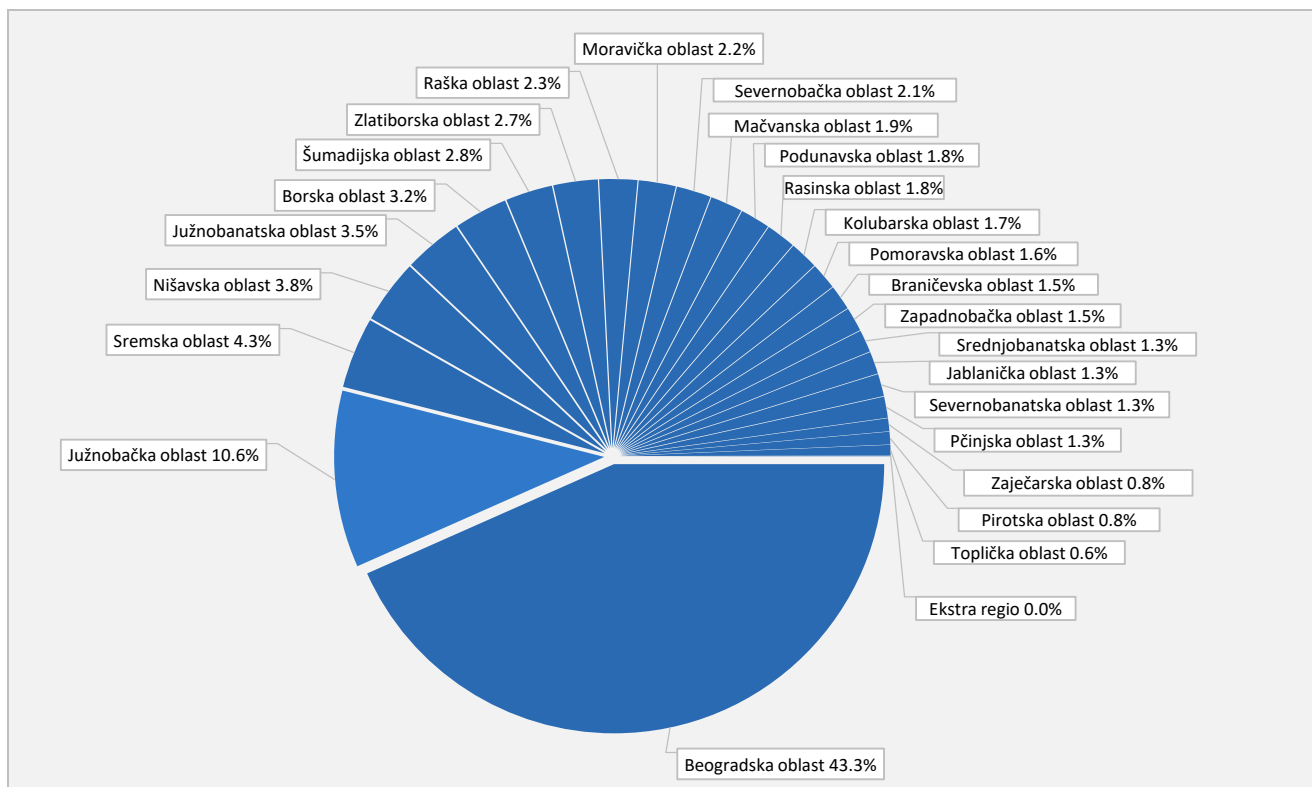
## ◆ Areas of the Republic of Serbia – GVA, shares in total GVA of the Republic of Serbia and level indices

**Table 3.** Areas of the Republic of Serbia – GVA, shares in total GVA of the Republic of Serbia and level indices

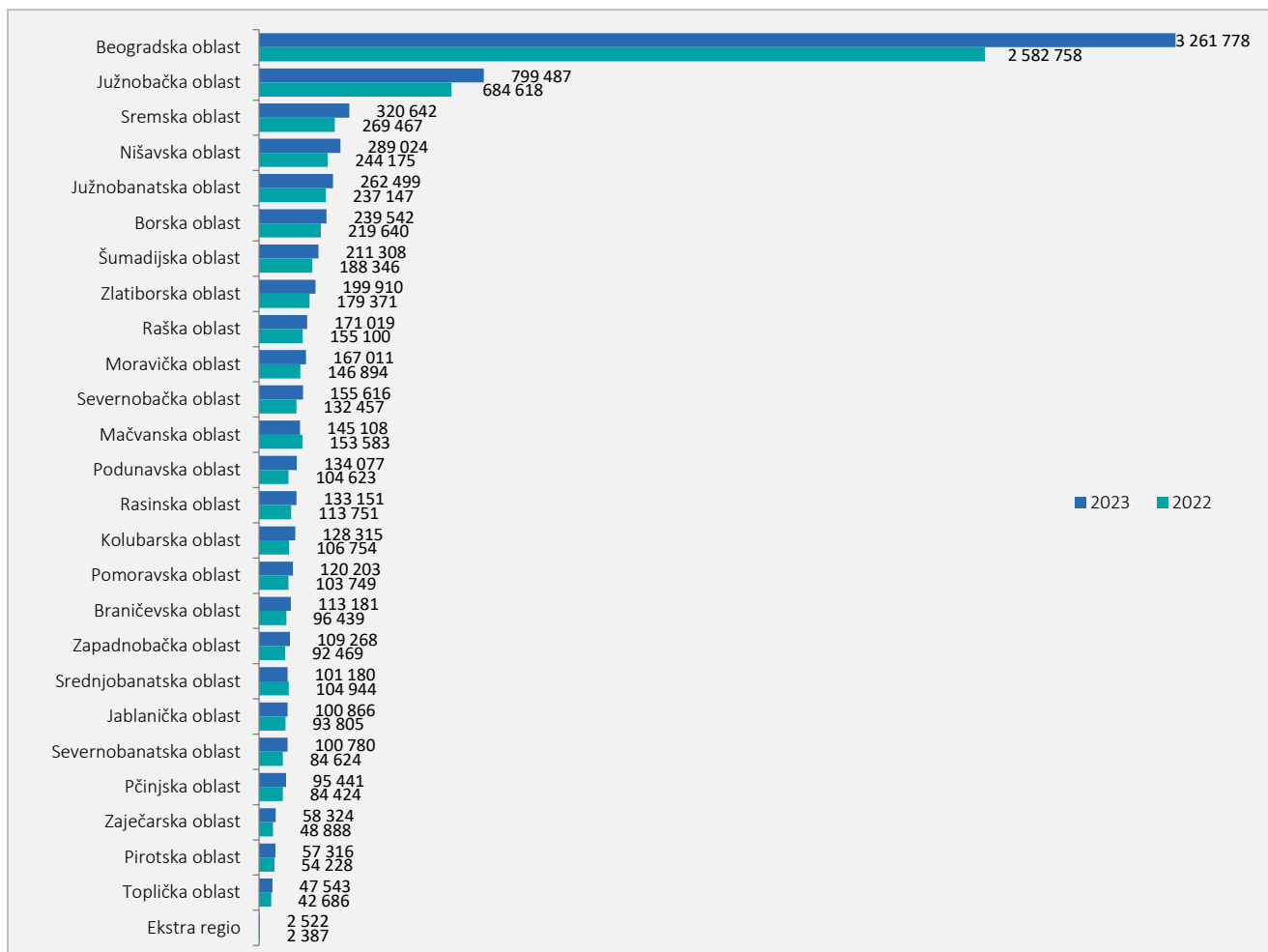
Area	GVA (RSD million) <sup>1)</sup>		Index	Share (%)		GVA per capita (RSD)		Level Index (RS = 100)	
	2023	2022	2023/2022	2023	2022	2023	2022	2023	2022
<b>REPUBLIKA SRBIJA</b>	<b>7 525 112</b>	<b>6 327 328</b>	<b>118.9</b>	<b>100.0</b>	<b>100.0</b>	<b>1 136</b>	<b>949</b>	<b>100.0</b>	<b>100.0</b>
Beogradska oblast	3 261 778	2 582 758	126.3	43.3	40.8	1 938	1 533	170.6	161.5
Zapadnobačka oblast	109 268	92 469	118.2	1.5	1.5	714	596	62.8	62.8
Južnobanatska oblast	262 499	237 147	110.7	3.5	3.7	1 014	909	89.2	95.7
Južnobačka oblast	799 487	684 618	116.8	10.6	10.8	1 316	1 127	115.8	118.7
Severnobanatska oblast	100 780	84 624	119.1	1.3	1.3	862	715	75.8	75.3
Severnobačka oblast	155 616	132 457	117.5	2.1	2.1	977	825	86.0	86.9
Srednjobanatska oblast	101 180	104 944	96.4	1.3	1.7	646	663	56.8	69.8
Sremska oblast	320 642	269 467	119.0	4.3	4.3	1 139	952	100.2	100.3
Zlatiborska oblast	199 910	179 371	111.5	2.7	2.8	790	702	69.5	73.9
Kolubarska oblast	128 315	106 754	120.2	1.7	1.7	836	689	73.6	72.6
Mačvanska oblast	145 108	153 583	94.5	1.9	2.4	550	577	48.4	60.7
Moravička oblast	167 011	146 894	113.7	2.2	2.3	888	774	78.1	81.5
Pomoravska oblast	120 203	103 749	115.9	1.6	1.6	666	567	58.6	59.7
Rasinska oblast	133 151	113 751	117.1	1.8	1.8	648	547	57.0	57.6
Raška oblast	171 019	155 100	110.3	2.3	2.5	576	522	50.7	55.0
Šumadijska oblast	211 308	188 346	112.2	2.8	3.0	787	697	69.3	73.5
Borska oblast	239 542	219 640	109.1	3.2	3.5	2 397	2 159	210.9	227.4
Braničevska oblast	113 181	96 439	117.4	1.5	1.5	730	614	64.3	64.7
Zaječarska oblast	58 324	48 888	119.3	0.8	0.8	610	503	53.7	53.0
Jablanička oblast	100 866	93 805	107.5	1.3	1.5	551	506	48.5	53.3
Nišavska oblast	289 024	244 175	118.4	3.8	3.9	843	708	74.2	74.6
Pirotska oblast	57 316	54 228	105.7	0.8	0.9	755	704	66.4	74.1
Podunavska oblast	134 077	104 623	128.2	1.8	1.7	768	594	67.6	62.5
Pčinjska oblast	95 441	84 424	113.0	1.3	1.3	495	435	43.6	45.8
Toplička oblast	47 543	42 686	111.4	0.6	0.7	619	550	54.5	57.9
<i>Extra regio</i>	2 522	2 387	105.7	0.0	0.0	-	-	-	-
Kosovska oblast	...	...	...	...	...	...	...	...	...
Kosovsko-mitrovačka oblast	...	...	...	...	...	...	...	...	...
Kosovsko-pomoravska oblast	...	...	...	...	...	...	...	...	...
Pečka oblast	...	...	...	...	...	...	...	...	...
Prizrenska oblast	...	...	...	...	...	...	...	...	...

<sup>1)</sup> Net taxes on products make the difference between GVA and GDP. In compliance with the Eurostat regulations, GVA shall be expressed for the level of areas (districts).

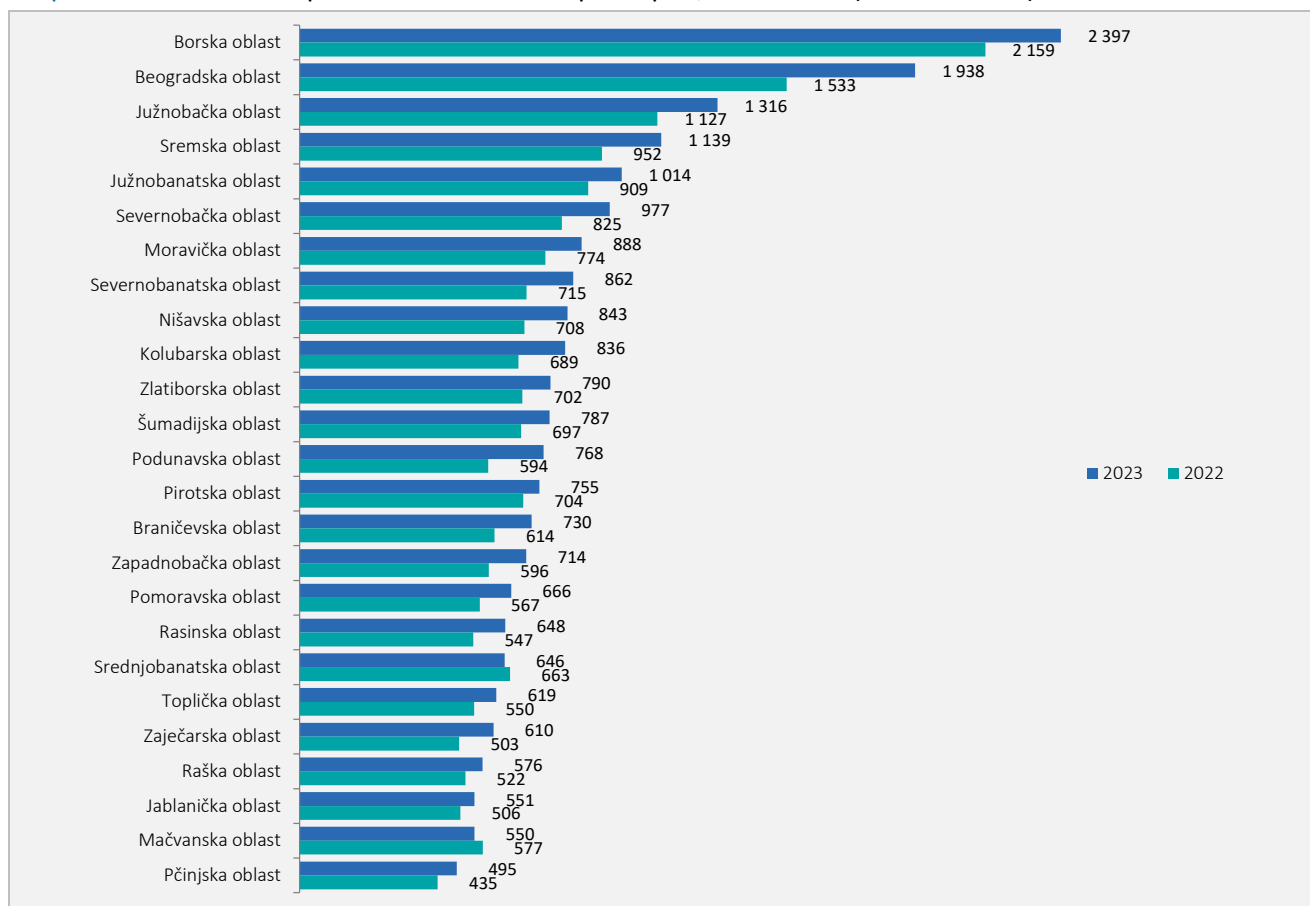
Graph. 5. Areas of the Republic of Serbia – share of areas in total GVA of the Republic of Serbia, 2023



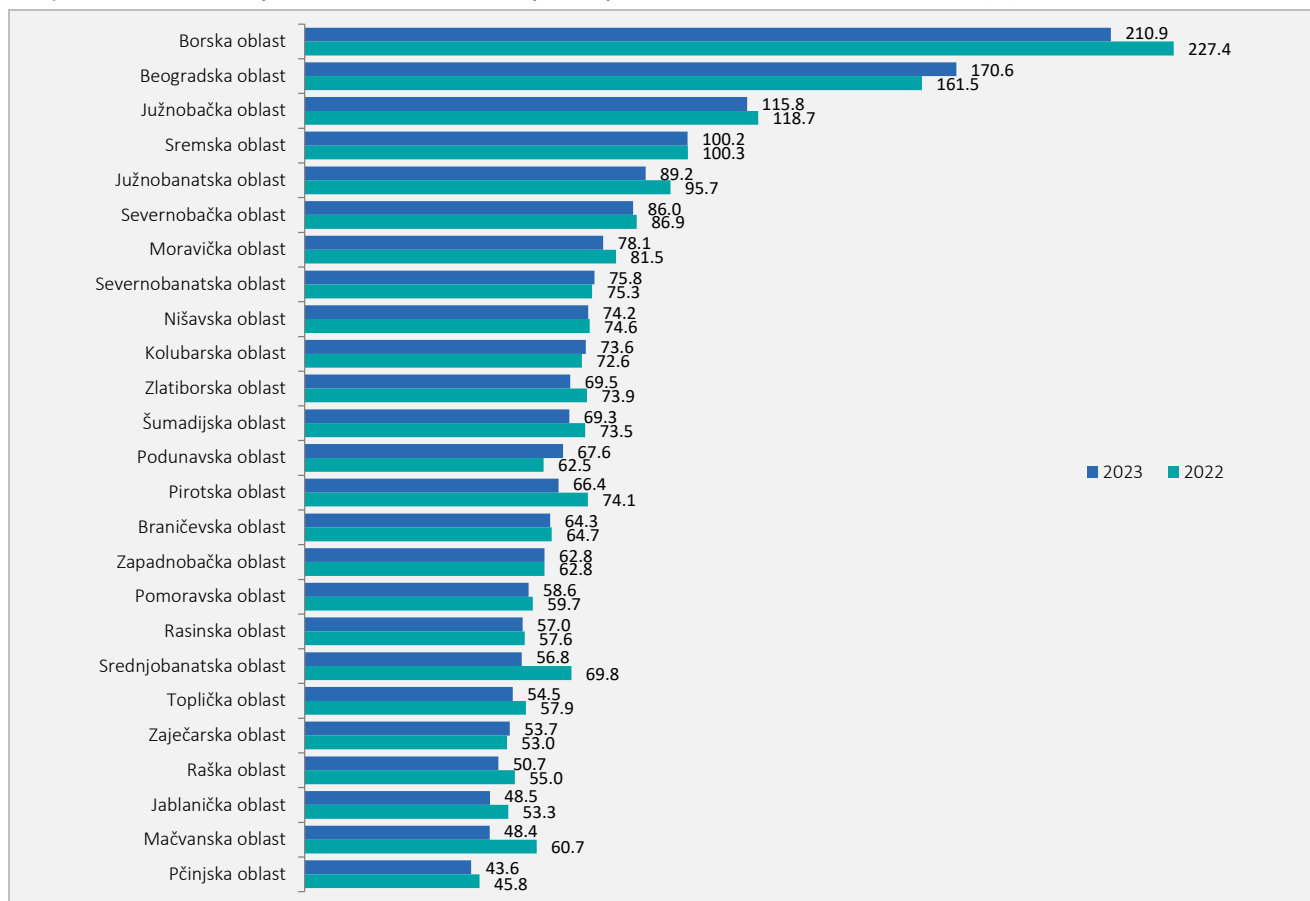
Graph. 6. Areas of the Republic of Serbia – GVA, 2023-2022 (RSD million)



Graph. 7. Areas of the Republic of Serbia – GVA per capita, 2023–2022 (RSD thousand)



Graph. 8. Areas of Republic of Serbia – GVA per capita – level indices, 2023–2022 (%)

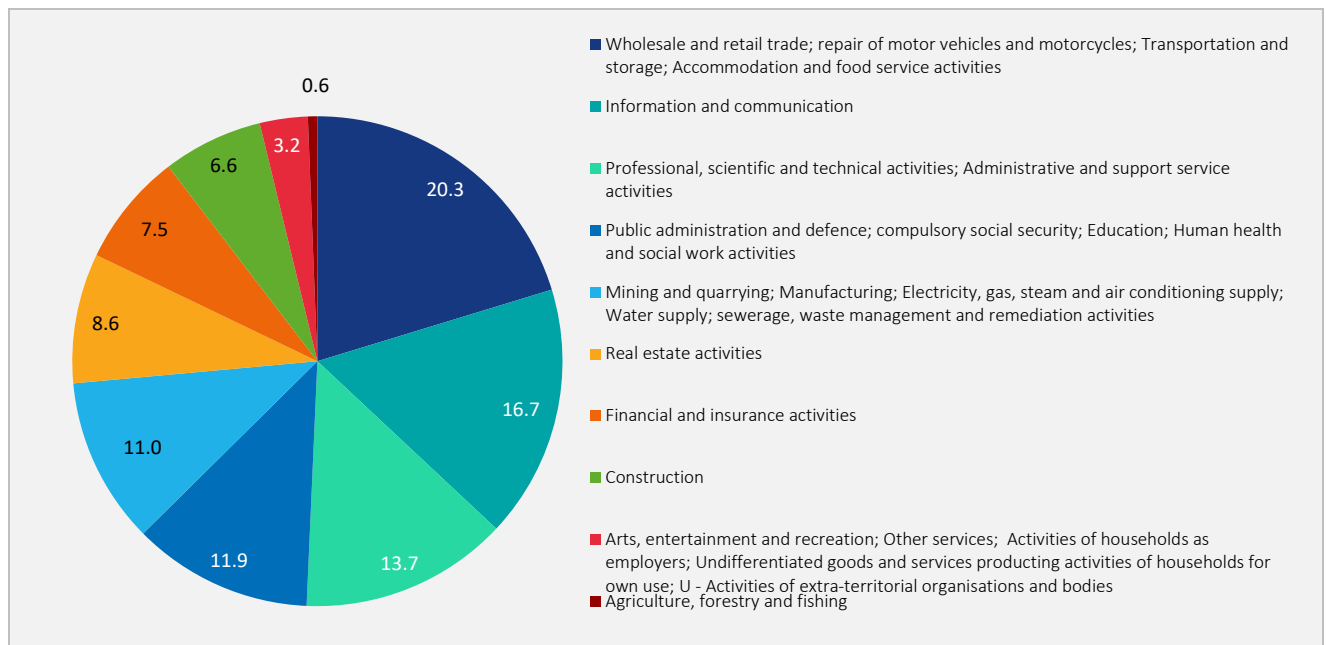


## ◆ Regional GVA by activity

Table 4. Regions of the Republic of Serbia – Regional GVA by activity, 2023 (RSD million)

Name of activity	Republic of Serbia	Beogradski region	Region Vojvodine	Region Šumadije i Zapadne Srbije	Region Južne i Istočne Srbije	Extra regio
<b>TOTAL</b>	<b>7 525 112</b>	<b>3 261 778</b>	<b>1 849 473</b>	<b>1 276 024</b>	<b>1 135 314</b>	<b>2 522</b>
Agriculture, forestry and fishing	333 893	20 276	154 287	100 469	58 861	
Mining and quarrying; Manufacturing; Electricity, gas, steam and air conditioning supply; Water supply; sewerage, waste management and remediation activities	1 673 042	357 918	506 904	341 949	466 271	
Construction	440 987	215 367	92 434	83 615	49 571	
Wholesale and retail trade; repair of motor vehicles and motorcycles; Transportation and storage; Accommodation and food service activities	1 410 804	661 450	366 421	240 512	142 421	
Information and communication	718 979	544 712	103 808	32 343	38 116	
Financial and insurance activities	354 578	244 020	59 656	30 434	20 468	
Real estate activities	634 582	279 694	145 644	123 314	85 930	
Professional, scientific and technical activities; Administrative and support service activities	681 136	447 635	126 965	61 902	44 634	
Public administration and defence; compulsory social security; Education; Human health and social work activities	1 052 174	387 539	240 836	221 771	199 505	2 522
Arts, entertainment and recreation; Other services; Activities of households as employers; Undifferentiated goods and services producing activities of households for own use; U - Activities of extra-territorial organisations and bodies	224 937	103 167	52 519	39 715	29 536	

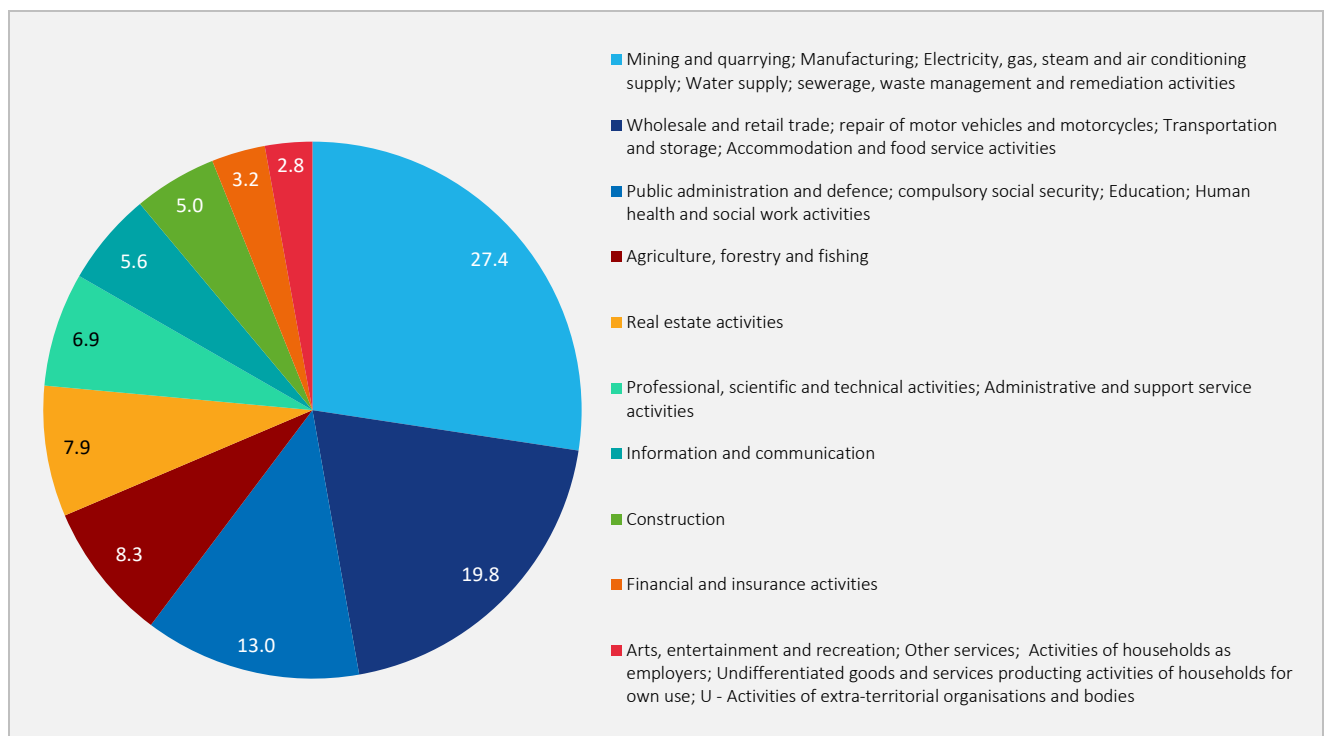
Graph. 9. Beogradski region – GVA by activity, 2023 (%)



**Table 5. Region Vojvodine and areas – Regional GVA by activity, 2023 (RSD million)**

Name of activity	Region Vojvodine	Zapadno-bačka oblast	Južno-banatska oblast	Južno-bačka oblast	Severno-banatska oblast	Severno-bačka oblast	Srednjo-banatska oblast	Sremska oblast
<b>TOTAL</b>	<b>1 849 473</b>	<b>109 268</b>	<b>262 499</b>	<b>799 487</b>	<b>100 780</b>	<b>155 616</b>	<b>101 180</b>	<b>320 642</b>
Agriculture, forestry and fishing	154 287	18 721	23 829	39 272	13 672	16 860	17 322	24 612
Mining and quarrying; Manufacturing; Electricity, gas, steam and air conditioning supply; Water supply; sewerage, waste management and remediation activities	506 904	22 993	116 861	164 046	38 947	41 778	16 938	105 342
Construction	92 434	4 300	10 215	48 654	1 953	6 935	3 732	16 645
Wholesale and retail trade; repair of motor vehicles and motorcycles; Transportation and storage; Accommodation and food service activities	366 421	20 045	34 088	162 735	13 834	29 402	16 983	89 334
Information and communication	103 808	1 982	4 382	80 625	1 427	7 940	2 449	5 002
Financial and insurance activities	59 656	2 633	4 147	39 547	1 877	4 137	2 449	4 866
Real estate activities	145 644	10 084	16 643	61 535	7 445	15 244	11 183	23 508
Professional, scientific and technical activities; Administrative and support service activities	126 965	6 861	11 838	76 434	3 307	8 070	7 277	13 180
Public administration and defence; compulsory social security; Education; Human health and social work activities	240 836	17 424	34 061	104 233	15 119	19 473	19 667	30 860
Arts, entertainment and recreation; Other services; Activities of households as employers; Undifferentiated goods and services producing activities of households for own use; U - Activities of extra-territorial organisations and bodies	52 519	4 225	6 434	22 407	3 200	5 778	3 181	7 293

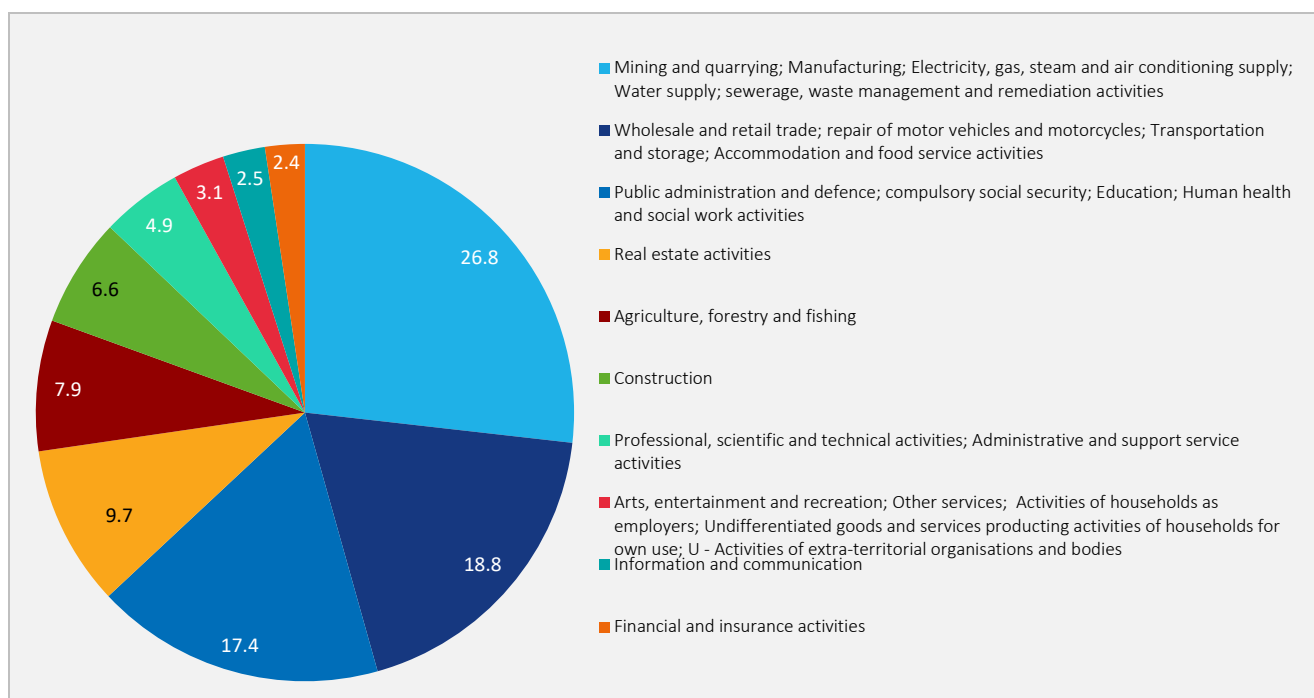
**Graph. 10. Region Vojvodine – GVA by activity, 2023 (%)**



**Table 6. Region Šumadije i Zapadne Srbije and areas – Regional GVA by activity, 2023 (RSD million)**

Name of activity	Region Šumadije i Zapadne Srbije	Zlatiborska oblast	Kolubarska oblast	Mačvanska oblast	Mora-vička oblast	Pomo-ravska oblast	Rasin-ska oblast	Raška oblast	Šuma-dijaska oblast
<b>TOTAL</b>	<b>1 276 024</b>	<b>199 910</b>	<b>128 315</b>	<b>145 108</b>	<b>167 011</b>	<b>120 203</b>	<b>133 151</b>	<b>171 019</b>	<b>211 308</b>
Agriculture, forestry and fishing	100 469	17 140	11 073	17 180	11 665	10 870	10 228	11 782	10 530
Mining and quarrying; Manufacturing; Electricity, gas, steam and air conditioning supply; Water supply; sewerage, waste management and remediation activities	341 949	60 491	36 723	26 884	56 610	30 493	42 757	28 625	59 365
Construction	83 615	14 575	13 495	10 945	5 590	8 790	7 762	13 113	9 344
Wholesale and retail trade; repair of motor vehicles and motorcycles; Transportation and storage; Accommodation and food service activities	240 512	36 426	23 485	25 842	40 030	19 054	22 115	33 582	39 978
Information and communication	32 343	3 007	3 420	2 211	4 864	1 902	3 718	5 278	7 943
Financial and insurance activities	30 434	4 485	2 695	4 445	4 580	2 564	3 269	3 338	5 059
Real estate activities	123 314	17 884	12 318	18 013	10 491	12 766	11 131	20 554	20 158
Professional, scientific and technical activities; Administrative and support service activities	61 902	8 840	4 819	10 105	7 923	5 368	5 910	7 315	11 623
Public administration and defence; compulsory social security; Education; Human health and social work activities	221 771	31 735	17 138	24 684	21 076	24 174	22 598	40 636	39 730
Arts, entertainment and recreation; Other services; Activities of households as employers; Undifferentiated goods and services producing activities of households for own use; U - Activities of extra-territorial organisations and bodies	39 715	5 327	3 151	4 799	4 182	4 221	3 663	6 795	7 577

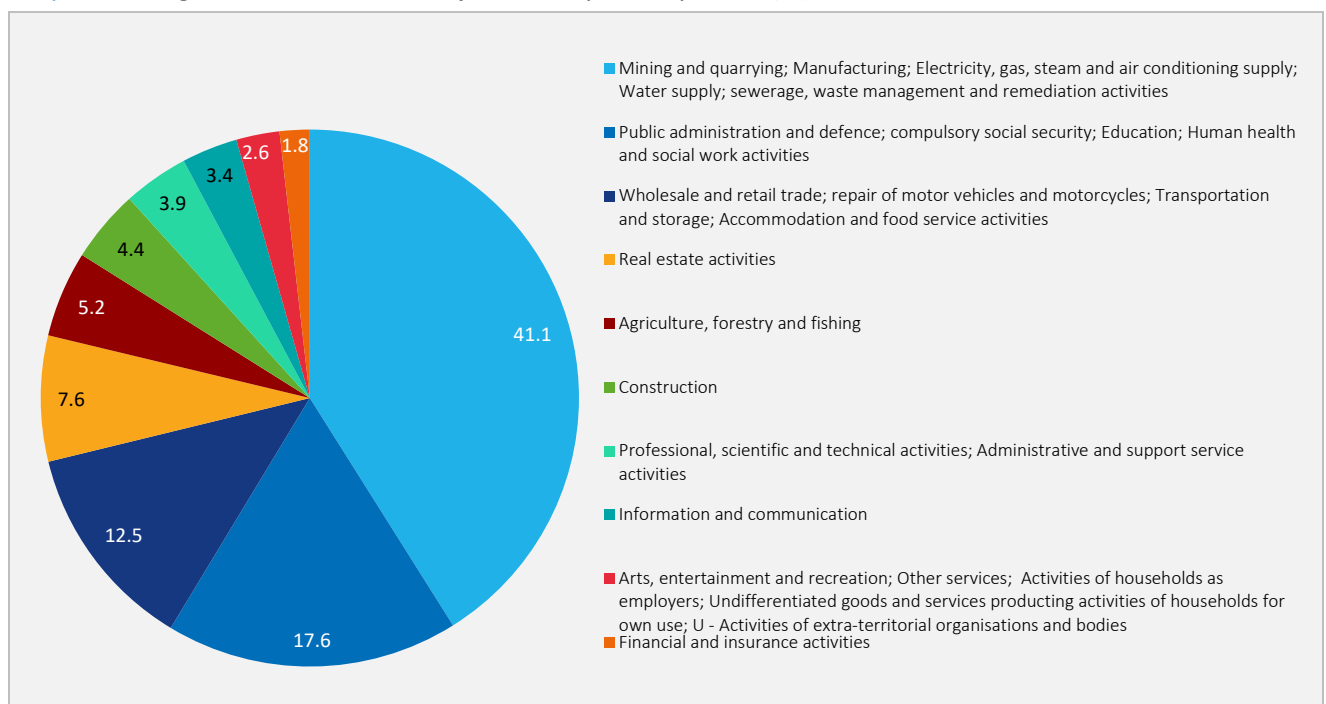
**Graph. 11. Region Šumadije i Zapadne Srbije – GVA by activity, 2023 (%)**



**Table 7. Region Južne i Istočne Srbije and areas – Regional GVA by activity, 2023 (RSD million)**

Name of activity	Region Južne i Istočne Srbije	Borska oblast	Braničevska oblast	Zaječarska oblast	Jablanička oblast	Nišavska oblast	Pirotska oblast	Podunavska oblast	Pčinjska oblast	Toplička oblast
<b>TOTAL</b>	<b>1 135 314</b>	<b>239 542</b>	<b>113 181</b>	<b>58 324</b>	<b>100 866</b>	<b>289 024</b>	<b>57 316</b>	<b>134 077</b>	<b>95 441</b>	<b>47 543</b>
Agriculture, forestry and fishing	58 861	4 444	10 270	6 236	7 610	6 901	2 606	8 097	7 050	5 647
Mining and quarrying; Manufacturing; Electricity, gas, steam and air conditioning supply; Water supply; sewerage, waste management and remediation activities	466 271	190 931	34 119	13 361	31 830	72 481	24 762	62 063	23 828	12 895
Construction	49 571	9 972	5 583	1 936	7 088	10 378	1 533	6 302	4 402	2 377
Wholesale and retail trade; repair of motor vehicles and motorcycles; Transportation and storage; Accommodation and food service activities	142 421	7 816	16 152	10 506	15 601	45 902	6 603	20 216	13 962	5 664
Information and communication	38 116	1 063	2 007	1 107	1 469	27 759	1 192	1 834	1 084	602
Financial and insurance activities	20 468	1 461	1 475	1 261	1 932	8 400	975	2 021	2 061	880
Real estate activities	85 930	6 255	13 895	5 797	8 432	24 341	4 795	8 844	9 168	4 402
Professional, scientific and technical activities; Administrative and support service activities	44 634	2 790	5 704	2 496	3 460	17 282	3 189	4 887	3 466	1 360
Public administration and defence; compulsory social security; Education; Human health and social work activities	199 505	13 061	20 793	13 643	20 217	66 009	9 866	16 632	26 880	12 404
Arts, entertainment and recreation; Other services; Activities of households as employers; Undifferentiated goods and services producing activities of households for own use; U - Activities of extra-territorial organisations and bodies	29 536	1 749	3 183	1 981	3 227	9 570	1 794	3 181	3 540	1 312

**Graph. 12. Region Južne i Istočne Srbije – GVA by activity, 2023 (%)**



## ◆ Regional GVA by activity, 2022 (revised data)

Table 8. Regions of the Republic of Serbia – Regional GVA by activity, 2022 (RSD million)

Name of activity	Republic of Serbia	Beogradski region	Region Vojvodine	Region Šumadije i Zapadne Srbije	Region Južne i Istočne Srbije	Extra regio
<b>TOTAL</b>	<b>6 327 328</b>	<b>2 582 758</b>	<b>1 605 726</b>	<b>1 147 549</b>	<b>988 908</b>	<b>2 387</b>
Agriculture, forestry and fishing	398 174	25 344	148 977	145 814	78 039	
Mining and quarrying; Manufacturing; Electricity, gas, steam and air conditioning supply; Water supply; sewerage, waste management and remediation activities	1 524 432	277 525	507 637	324 623	414 647	
Construction	356 519	177 816	69 685	67 912	41 105	
Wholesale and retail trade; repair of motor vehicles and motorcycles; Transportation and storage; Accommodation and food service activities	1 144 875	545 683	297 683	192 647	108 861	
Information and communication	524 513	408 626	71 090	18 380	26 417	
Financial and insurance activities	218 729	147 602	39 059	19 129	12 939	
Real estate activities	515 553	210 542	121 090	107 489	76 432	
Professional, scientific and technical activities; Administrative and support service activities	521 252	344 344	96 392	47 368	33 147	
Public administration and defence; compulsory social security; Education; Human health and social work activities	928 172	351 176	210 366	191 273	172 970	2 387
Arts, entertainment and recreation; Other services; Activities of households as employers; Undifferentiated goods and services producing activities of households for own use; U - Activities of extra-territorial organisations and bodies	195 109	94 101	43 746	32 913	24 349	

Table 9. Region Vojvodine and areas – Regional GVA by activity, 2022 (RSD million)

Name of activity	Region Vojvodine	Zapadno-bačka oblast	Južno-banatska oblast	Južno-bačka oblast	Severno-banatska oblast	Severno-bačka oblast	Srednjo-banatska oblast	Sremska oblast
<b>TOTAL</b>	<b>1 605 726</b>	<b>92 469</b>	<b>237 147</b>	<b>684 618</b>	<b>84 624</b>	<b>132 457</b>	<b>104 944</b>	<b>269 467</b>
Agriculture, forestry and fishing	148 977	16 740	24 420	34 265	13 955	14 534	20 204	24 859
Mining and quarrying; Manufacturing; Electricity, gas, steam and air conditioning supply; Water supply; sewerage, waste management and remediation activities	507 637	21 955	119 800	172 102	32 498	38 165	26 279	96 839
Construction	69 685	3 416	6 282	37 607	1 491	5 729	3 386	11 775
Wholesale and retail trade; repair of motor vehicles and motorcycles; Transportation and storage; Accommodation and food service activities	297 683	15 351	25 027	137 762	10 413	24 677	16 402	68 051
Information and communication	71 090	1 154	2 976	55 780	925	5 410	1 951	2 894
Financial and insurance activities	39 059	1 567	2 714	26 313	1 215	2 646	1 593	3 013
Real estate activities	121 090	8 256	13 977	54 239	5 659	11 753	8 600	18 607
Professional, scientific and technical activities; Administrative and support service activities	96 392	5 340	8 373	57 473	2 488	6 352	6 372	9 993
Public administration and defence; compulsory social security; Education; Human health and social work activities	210 366	15 533	28 451	90 378	13 461	18 184	17 145	27 216
Arts, entertainment and recreation; Other services; Activities of households as employers; Undifferentiated goods and services producing activities of households for own use; U - Activities of extra-territorial organisations and bodies	43 746	3 158	5 128	18 699	2 520	5 007	3 012	6 222

**Table 10. Region Region Šumadije i Zapadne Srbije and areas – Regional GVA by activity, 2022 (RSD million)**

Name of activity	Region Šumadije i Zapadne Srbije	Zlati-borska oblast	Kolu-barska oblast	Mačvan-ska oblast	Mora-vička oblast	Pomo-ravska oblast	Rasin-ska oblast	Raška oblast	Šuma-dijaska oblast
<b>TOTAL</b>	<b>1 147 549</b>	<b>179 371</b>	<b>106 754</b>	<b>153 583</b>	<b>146 894</b>	<b>103 749</b>	<b>113 751</b>	<b>155 100</b>	<b>188 346</b>
Agriculture, forestry and fishing	145 814	25 195	16 391	25 404	17 500	13 246	14 854	18 071	15 153
Mining and quarrying; Manufacturing; Electricity, gas, steam and air conditioning supply; Water supply; sewerage, waste management and remediation activities	324 623	57 320	29 603	39 892	48 488	25 108	35 107	27 584	61 521
Construction	67 912	12 093	10 085	10 114	4 579	8 046	5 253	10 009	7 734
Wholesale and retail trade; repair of motor vehicles and motorcycles; Transportation and storage; Accommodation and food service activities	192 647	25 966	16 448	24 927	32 459	15 176	18 395	28 354	30 922
Information and communication	18 380	1 720	1 949	1 516	2 861	1 117	1 826	2 980	4 411
Financial and insurance activities	19 129	2 931	1 634	2 770	2 807	1 626	1 935	2 112	3 312
Real estate activities	107 489	15 720	10 443	15 030	9 127	10 984	9 301	18 538	18 347
Professional, scientific and technical activities; Administrative and support service activities	47 368	6 566	3 491	8 156	5 698	4 177	4 362	5 442	9 476
Public administration and defence; compulsory social security; Education; Human health and social work activities	191 273	27 365	14 162	21 609	19 641	20 837	19 554	36 292	31 813
Arts, entertainment and recreation; Other services; Activities of households as employers; Undifferentiated goods and services producing activities of households for own use; U - Activities of extra-territorial organisations and bodies	32 913	4 495	2 548	4 165	3 736	3 432	3 163	5 717	5 658

**Table 11. Region Južne i Istočne Srbije and areas – Regional GVA by activity, 2022 (RSD million)**

Name of activity	Region Južne i Istočne Srbije	Borska oblast	Brani-čevska oblast	Zaje-čarska oblast	Jabla-nička oblast	Nišavska oblast	Pirotska oblast	Podu-navska oblast	Pčinjska oblast	Toplička oblast
<b>TOTAL</b>	<b>988 908</b>	<b>219 640</b>	<b>96 439</b>	<b>48 888</b>	<b>93 805</b>	<b>244 175</b>	<b>54 228</b>	<b>104 623</b>	<b>84 424</b>	<b>42 686</b>
Agriculture, forestry and fishing	78 039	6 503	12 360	7 964	10 781	9 115	3 844	9 381	10 352	7 738
Mining and quarrying; Manufacturing; Electricity, gas, steam and air conditioning supply; Water supply; sewerage, waste management and remediation activities	414 647	177 072	29 986	10 139	30 927	65 868	25 193	42 691	21 715	11 057
Construction	41 105	7 308	4 283	1 697	7 474	7 485	1 276	6 137	3 726	1 719
Wholesale and retail trade; repair of motor vehicles and motorcycles; Transportation and storage; Accommodation and food service activities	108 861	6 533	11 708	7 469	11 791	36 851	5 394	15 450	9 581	4 086
Information and communication	26 417	661	1 720	642	1 014	19 495	764	1 162	581	377
Financial and insurance activities	12 939	731	988	864	1 317	5 112	624	1 539	1 244	521
Real estate activities	76 432	5 374	11 675	4 886	7 860	22 151	4 369	8 387	8 176	3 553
Professional, scientific and technical activities; Administrative and support service activities	33 147	2 210	3 648	1 896	2 738	13 280	2 702	3 160	2 464	1 050
Public administration and defence; compulsory social security; Education; Human health and social work activities	172 970	11 716	17 393	11 717	16 928	57 181	8 582	14 235	23 697	11 521
Arts, entertainment and recreation; Other services; Activities of households as employers; Undifferentiated goods and services producing activities of households for own use; U - Activities of extra-territorial organisations and bodies	24 349	1 532	2 677	1 614	2 977	7 636	1 479	2 481	2 888	1 064

Dissemination and public relations unit

Phone: +38111 2401284

Email: [stat@stat.gov.rs](mailto:stat@stat.gov.rs)

Library

Phone: +38111 2412922, ext. 251

Email: [biblioteka@stat.gov.rs](mailto:biblioteka@stat.gov.rs)

Number of pages: 23

# WORKING PAPER

No **131**