



Statistical Office of the Republic of Serbia



ISSN 0354-3641

BULLETIN

Labour Force Survey in The Republic of Serbia, 2019

658

Belgrade
2020

Labour Force Survey in The Republic of Serbia, 2019

Belgrade, 2020

Bulletin – Labour Force Survey in the Republic of Serbia, 2018

Publishers: Statistical Office of the Republic of Serbia, Belgrade, Milana Rakića 5

For Publishers: Dr Miladin Kovačević, Director

Manuscript prepared by: Vesna Pantelić, Milijana Smiljković, Slavica Novaković, Mirjana Novaković, Marija Vranić,
Maja Petrović, Mirjana Ogrizović Brašanac

EDITORIAL STAFF

Vladimir Šutić, person in charge for the publication

Members: Selen Marković, Tatjana Savić, Jasmina Kostić Simov, Jelena Milaković i Sonja Radoičić

Design and editing: Division for statistical output development and visualization

English translation: Milena Kovačević

PREFACE

The Statistical Office of the Republic of Serbia communicates the results of the Labour Force Survey 2019.

Starting from 2015 it has been implemented as a continuous survey in the territory of the Republic of Serbia. In determining the main contingents of labour force we have applied the international recommendations and definitions and therefore the data provided by this survey present the main source of labour force statistics that are internationally comparable by their contents and regarding the applied methodology.

The data of this survey are envisaged for a wide circle of domestic users and are also forwarded to a number of international organizations (Eurostat, ILO, the World Bank, IMF, OECD, UNICEF, UNESCO, etc.).

The bulletin consists of several parts. Part one contains the labour market basic indicators analysis from 2019. In part two basic indicators of the population aged 15 and over (rates and absolute values) are offered. In part three basic indicators for the employed population aged 15 and over are presented. Part four contains basic indicators of unemployed population, while part five offers indicators regarding inactive and potentially active population. The bulletin end contains methodological explanations and a sample plan.

Belgrade, 2020

Director
Dr Miladin Kovačević

CONTENTS

Preface	3
---------------	---

Annual result analysis of the Labour Force Survey in 2019	7
Methodological explanations.....	61

Population aged 15 and over

1.1. Basic contingents of work source by age groups, 2019/2018	11
1.2. Rates of activity, employment, unemployment and inactivity by age groups, 2019/2018	11
1.3. Population by activity status, age groups, region and type of settlement, 2019	12
1.4. Males by activity status, age groups, region and types of settlements, 2019	14
1.5. Female population by status of activity, age groups, region and type of settlements, 2019	15
1.6. Population by age groups, sex and activity, 2019 (in thous.)	16
1.7. Population by education, sex and activity, 2019 (in thous.)	17
1.8. Population based on marital status, sex and activity, 2019 (in thous.)	17
1.9. Status of persons according to the subjective opinion, sex, region and type of settlements, 2019 (in thous.)	19
1.10. Rates of activity, unemployment and inactivity for population aged 15 and over by area, 2019 (%)	19

Employed

2.1. Employed by age groups, sex, region and type of settlements, 2019 (in thous.)	25
2.2. Employed by level of education, sex, region and type of settlements, 2019 (in thous.)	26
2.3. Employed by professional, status, sex, region and type of settlements, 2019 (in thous.)	27
2.4. Employed with the usual working hours, sex, region and type of settlements, 2019 (in thous.)	28
2.5. Employed by ownership, working hours, sex and region, 2019 (in thous.)	29
2.6. Employed by sector of activity, sex and region, 2019 (in thous.)	30
2.7. Employed by occupation, sex and region, 2019 (in thous.)	32
2.8. Employed in formal or informal employment, by groups of age, professional status, sex and region, 2019 (in thous.)	33
2.9. Employed according to whether they seek another job, reasons for seeking another job, sex and region, 2019 (in thous.)	35
2.10. Employees by type of contract and employment rights, sex, region and type of settlements, 2019 (in thous.)	37
2.11. Employees by sector of activity, sex, region and type of settlements, 2019 (in thous.)	39
2.12. Employees by occupation, sex, region and type of settlements, 2019 (in thous.)	41
2.13. Employees by permanency of job, sex, region and type of settlement, 2019 (in thous.)	43
2.14. Employees by kind of ownership, sex, region and type of settlement, 2019 (in thous.)	45

Unemployed

3.1. Unemployed by age groups, sex, region and type of settlement, 2019 (in thous.)	49
3.2. Unemployed by educational attainment, sex, region and type of settlement, 2019 (in thous.)	49
3.3. Unemployed by duration of job searching, sex, region and type of settlement, 2019 (in thous.)	51
3.4. Unemployed by previous work experience, type of job sought, sex, region and type of settlement, 2019 (in thous.)	51
3.5. Unemployed by registration with National Employment Service, by sex, region and type of settlement, 2019 (in thous.)	52

Inactive

4.1. Inactive by age groups, sex, region and type of settlement, 2019 (in thous.)	55
4.2. Inactive by educational attainment, sex, region and type of settlement, 2019 (in thous.)	55
4.3. Inactive by possibilities to get employed, sex and region, 2019 (in thous.)	56
4.4. Inactive by previous work experience, income sources, sex and region, 2019 (in thous.)	57
4.5. Part-time underemployed and potential additional labour force, 15-74 years, 2019 (in thous.)	58

Graphs

Graph. 1. Status of persons aged 15-24 in activity, 2019 (%)	12
Graph 2. Structure of employment, unemployment and inactivity by regions, 2019 (%)	13
Graph 3. Structure of employment, unemployment and inactivity by sex, 2019 (%)	13
Graph 4. Structure of employment, unemployment and inactivity by level of the highest completed education, 2019 (%)	26
Graph 5. Employed who want to work longer hours, by sex, 2019 (in thous.)	28
Graph 6. Employed by reasons of work shorter than full-time by sex, 2019	29
Graph 7. Formally/informally employed by sector of activities, 2019 (in thous.)	34
Graph 8. Employed by specific types of working hours, 2019 (in thous.)	35
Graph 9. Employed by employment status in the second job, 2019 (%)	36
Graph 10. Self-employed by occupation and sex, 2019 (%)	36
Graph 11. Employees workers who are obliged to control the work of other workers, by sex 2019 (%)	40
Graph 12. Structure of employees by paid and unpaid overtime work, 2019 (%)	40
Graph 13. Structure of employees by occupation and sex, 2019 (%)	42
Graph 14. Employees by total duration of temporary job (temporary, seasonal or casual jobs), 2019 (in thous.)	44
Graph 15. Employees by reasons they do temporary, seasonal or occasional job, 2019 (%)	44
Graph 16. Five main reasons for ceased job for unemployed that stopped working in the previous eight years, by sex, 2019 (in thous.)	50
Graph 17. Unemployed by the NES records, 2019 (%)	50
Graph 18. Inactive not seeking employment because they take care of children or of adult persons with disability, by sex, 2019 (%)	56

Maps

Rate of employment by areas, 2019	20
Rate of unemployment by areas, 2019	21

ANNUAL RESULT ANALYSIS OF THE LABOR FORCE SURVEY, 2019

In 2019, employment was increased by 68 100 (or 2.4%) in comparison to 2018, and it amounted to 2 901 000. Interannual employment growth in 2019 is almost half of the growth recorded in 2018, when it amounted to 38 300 (i.e. 1.4%).

The employment rate has reached 49.0%, which is by 1.4 percentage points (p. p.) more than the rate recorded in 2018.

The unemployment rate amounted to 10.4%, representing a drop by 2.3 p.p. compared to 2018, thus continuing the trend of unemployment decrease that started in 2013. The number of the unemployed amounted to 335 900 and it is by 76 300 less compared to the previous year.

The inactivity rate has also shown constant decrease since 2013, reaching 45.4% in 2019.

The number of inactive persons amounted to 2 687 000, which is less by 23 000 compared to 2018.

Growth of formal and drop of informal employment

In 2019, the long-term trend of increasing formal and decreasing informal employment is continued. Compared to 2018, formal employment increased by 92 700, of which 82 200 in non-agricultural activities. Informal employment decreased by 24 600, of which 20 700 were outside agriculture¹.

The rate of informal employment in 2019 was 18.2%, up 1.3p. p. less than in 2018. The majority of the informally employed was noted in the age group 25–54 and with the self-employed without workers.

Increase of total full-time employment and growth of home office employment

The number of employees (working for an employer) in 2019 amounted to 2 097 700, where 1 620 000 are full time employees, and 477 700 are employed on a part time, occasional or season jobs. In 2019, the number of full-time employees is dominant. The number of full-time employees in 2019 is higher than in 2018 by 55 300, while the number of part-time, occasional or seasonal employees increased by 9 800 in the same period.

The number of employed persons working from home in 2019 amounted to 157 800 and increased by 58 400, which is 58.6% compared to 2018..

More employed women with higher education and men with secondary school diploma

According to education level, the highest employment growth in 2019, compared to 2018, occurred in the group of secondary and higher education employees. The number of employees with secondary education increased by 37 300, while the number of employees with higher education increased by 21 200. The number of employed women with a high level of education increased by 18 900, and with secondary education by 14 100. On the other hand, in the male population, employment growth was recorded exclusively in the contingent with secondary education, where there are now 23 100 more employees than in 2018, while the number of employed men with higher education remains almost unchanged.

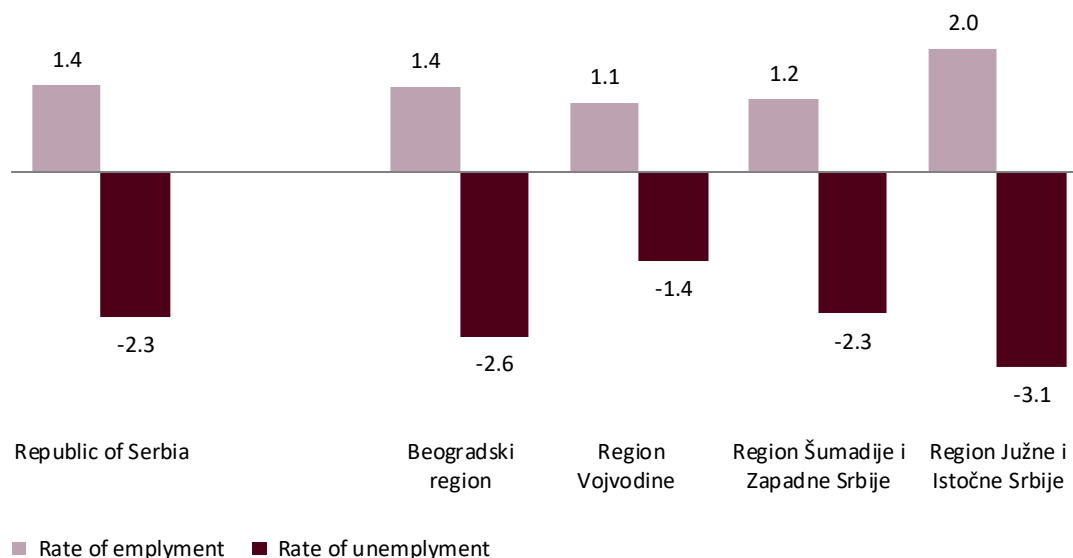
Observed by major occupational groups, the strongest employment growth was recorded in the occupation group Machinery and plant operators, installers and drivers, where in 2019 there were 22 300 more employees than in 2018.

¹ Agriculture covers the entire sector of Agriculture, Forestry and Fisheries, as well as a part of the Households as an employer sector related to agriculture

Unemployment rate is still the highest in the Region of South and East Serbia

Employment growth in 2019, compared to 2018, is steady across all regions. On the other hand, the decreasing trend in the unemployment rate is noticeable in all regions. A slightly higher decrease in the unemployment rate than in other regions was recorded in the Region of South and Eastern Serbia, but despite the decrease in the unemployment rate of 3.1 p. p., this region still has the highest unemployment rate, which amounted to 13.1% in 2019.

Change of employment and unemployment rates by regions, 2019 (in p. p.)



Position of the young on the labor market

The contingent of young people, aged 15 to 24, continues to decrease in 2019 by 11 100, i.e. by 1.5% compared to 2018.

The number of active young people compared to the previous year has reduced by 6 100, i.e. 2.8%. The activity rate amounted to 29.6%, where the activity rate of men was 36.2%, which is by 13.5 p. p. more than the activity rate of women of the same age.

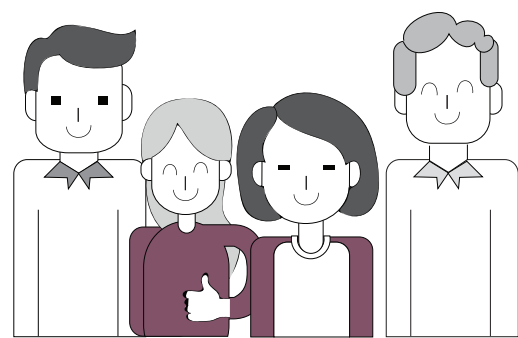
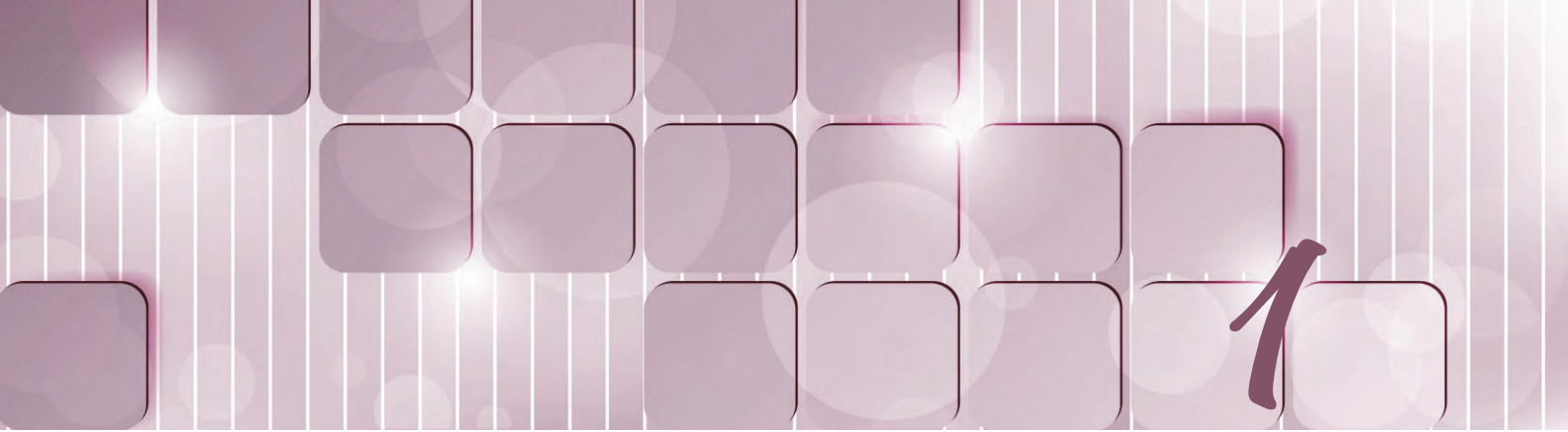
Compared to the previous year, employment of the young did not change much. The number of employed amounted to 153 800, and the employment rate was 21.5%. The youth unemployment rate amounted to 27.5% and less than the rate in the previous year by 2.2 p. p.

Observed by regions, the greatest youth unemployment rate, 32.8%, was recorded in the Region of Šumadija and West Serbia, while the lowest rate of 22.3% was registered in the Region of Vojvodina.

The youth inactivity rate amounted to 70.4% in 2019, and it is unchanged compared to 2018.

The NEET rate (representing the share of young people who do not either work or study in the total population of the young aged 15–24) amounted to 15.3%, where this rate is greater with women (by 1 p. p.) in comparison to men. Compared to the previous year, this rate is less by 1.2 p. p.

The early school-leavers rate, or the percentage of the young aged 18–24 with completed elementary school as their highest qualification, who did not continue further education, amounted to 6.6%, which is by 0.2 p. p. more than in 2018.



Population aged 15 and over

1.1. Basic contingents of work source by age groups, 2019/2018

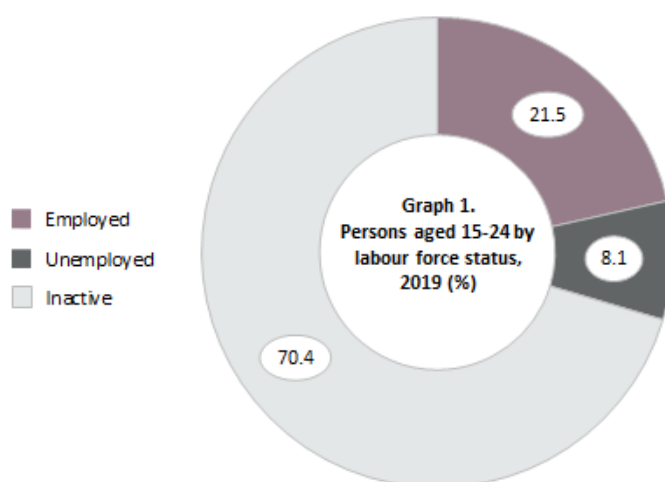
	2017	2016	Changes in relation to the previous year	
	(in thous.)	(in thous.)	(in thous.)	%
Population aged 15 and over	5923.9	5955.1	-31.2	-0.5
Active	3236.9	3245.1	-8.2	-0.3
Employed	2901.0	2832.9	68.1	2.4
Unemployed	335.9	412.2	-76.3	-18.5
Inactive	2687.0	2710.0	-23.0	-0.8
Young-age population (15–24)	716.0	727.1	-11.1	-1.5
Active	212.1	218.2	-6.1	-2.8
Employed	153.8	153.4	0.4	0.3
Unemployed	58.3	64.8	-6.5	-10.0
Inactive	503.9	508.9	-5.0	-1.0
Working-age population (15–64)	4504.1	4565.0	-60.9	-1.3
Active	3068.2	3096.4	-28.2	-0.9
Employed	2733.5	2685.4	48.1	1.8
Unemployed	334.7	411.0	-76.3	-18.6
Inactive	1435.9	1468.6	-32.7	-2.2

1.2. Rates of activity, employment, unemployment and inactivity by age groups, 2019/2018

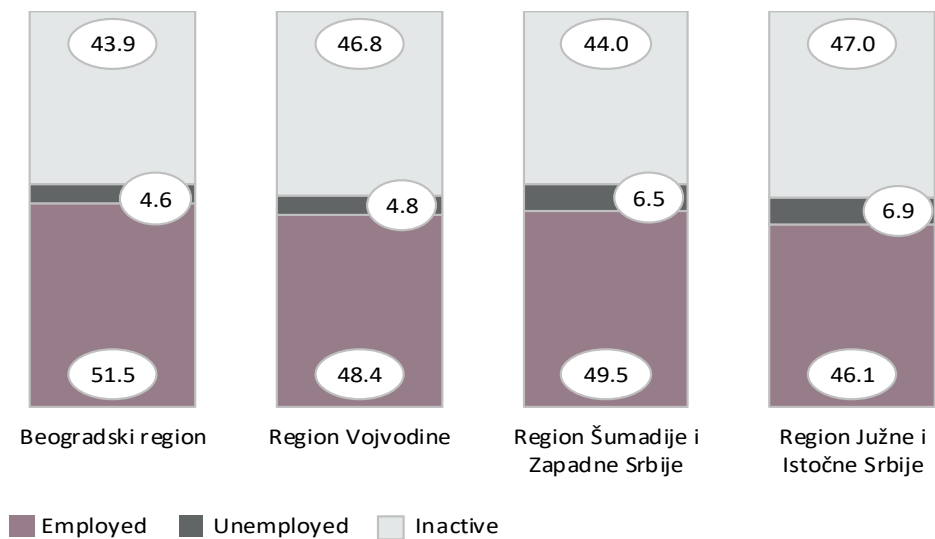
	2017	2016	Changes in relation to the previous year
	%	%	in percentages, points
Population aged 15 and over			
Rate of activity	54.6	54.5	0.1
Rate of employment	49.0	47.6	1.4
Rate of unemployment	10.4	12.7	-2.3
Rate of inactivity	45.4	45.5	-0.1
Young-age population (15–24)			
Rate of activity	29.6	30.0	-0.4
Rate of employment	21.5	21.1	0.4
Rate of unemployment	27.5	29.7	-2.2
Rate of inactivity	70.4	70.0	0.4
Working-age population (15–64)			
Rate of activity	68.1	67.8	0.3
Rate of employment	60.7	58.8	1.9
Rate of unemployment	10.9	13.3	-2.4
Rate of inactivity	31.9	32.2	-0.3

1.3. Population by activity status, age groups, region and type of settlement, 2019

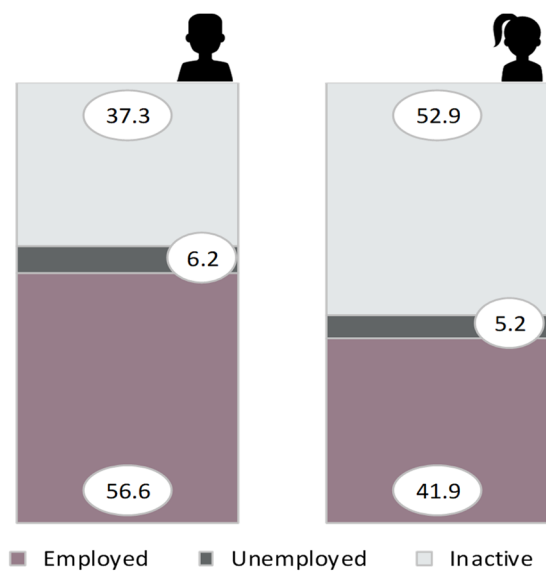
	Republic of Serbia							
	Total	Srbija – sever		Srbija – jug			Type of settlement	
		Beo-gradski region	Region Vojvodine	Region Šumadije i Zapadne Srbije	Region Južne i Istočne Srbije	Region Kosovo i Metohija	Urban	Other
Population aged 15 and over (in thous.)	5923.9	1437.5	1586.3	1640.7	1259.4	...	3551.2	2372.7
Active	3236.9	806.8	844.4	918.4	667.3	...	1895.5	1341.3
Employed	2901.0	740.5	768.1	812.4	580.0	...	1675.5	1225.5
Unemployed	335.9	66.4	76.3	106.0	87.2	...	220.0	115.9
Inactive	2687.0	630.7	741.9	722.3	592.2	...	1655.7	1031.4
Rate of activity (%)	54.6	56.1	53.2	56.0	53.0	...	53.4	56.5
Rate of employment (%)	49.0	51.5	48.4	49.5	46.1	...	47.2	51.7
Rate of unemployment (%)	10.4	8.2	9.0	11.5	13.1	...	11.6	8.6
Rate of inactivity (%)	45.4	43.9	46.8	44.0	47.0	...	46.6	43.5
Young-age population (15–24) (in thous.)	716.0	158.7	194.0	206.5	156.8	...	427.5	288.5
Active	212.1	41.2	65.6	59.4	45.8	...	101.8	110.3
Employed	153.8	31.4	51.1	39.9	31.4	...	71.6	82.2
Unemployed	58.3	9.8	14.6	19.5	14.4	...	30.2	28.1
Inactive	503.9	117.4	128.4	147.1	111.0	...	325.7	178.2
Rate of activity (%)	29.6	26.0	33.8	28.8	29.2	...	23.8	38.2
Rate of employment (%)	21.5	19.8	26.3	19.3	20.0	...	16.7	28.5
Rate of unemployment (%)	27.5	23.8	22.3	32.8	31.4	...	29.7	25.5
Rate of inactivity (%)	70.4	74.0	66.2	71.2	70.8	...	76.2	61.8
Working-age population (in thous.) (15–64)	4504.1	1108.1	1224.4	1238.4	933.2	...	2734.7	1769.4
Active	3068.2	784.6	818.6	847.1	618.0	...	1853.3	1214.9
Employed	2733.5	718.7	742.9	741.0	530.9	...	1634.4	1099.1
Unemployed	334.7	65.8	75.7	106.0	87.1	...	218.9	115.8
Inactive	1435.9	323.5	405.8	391.3	315.2	...	881.4	554.5
Rate of activity (%)	68.1	70.8	66.9	68.4	66.2	...	67.8	68.7
Rate of employment (%)	60.7	64.9	60.7	59.8	56.9	...	59.8	62.1
Rate of unemployment (%)	10.9	8.4	9.2	12.5	14.1	...	11.8	9.5
Rate of inactivity (%)	31.9	29.2	33.1	31.6	33.8	...	32.2	31.3



Graph 2. Structure of employment, unemployment and inactivity by regions, 2019 (%)



Graph 3. Structure of employment, unemployment and inactivity by sex, 2019 (%)



1.4. Males by activity status, age groups, region and types of settlements, 2019

	Republic of Serbia							
	Total	Srbija – sever		Srbija – jug			Type of settlement	
		Beo-gradski region	Region Vojvo-dine	Region Šumadije i Zapadne Srbije	Region Južne i Istočne Srbije	Region Kosovo i Metohija	Urban	Other
Aged 15 and over (in thous.)	2858.0	667.8	766.4	803.1	620.7	...	1666.2	1191.9
Active	1792.8	418.5	479.2	514.8	380.3	...	1003.3	789.5
Employed	1616.6	388.1	437.5	458.3	332.7	...	888.9	727.7
Unemployed	176.2	30.4	41.7	56.5	47.6	...	114.3	61.9
Inactive	1065.2	249.4	287.2	288.2	240.4	...	662.9	402.3
Rate of activity (%)	62.7	62.7	62.5	64.1	61.3	...	60.2	66.2
Rate of employment (%)	56.6	58.1	57.1	57.1	53.6	...	53.4	61.1
Rate of unemployment (%)	9.8	7.3	8.7	11.0	12.5	...	11.4	7.8
Rate of inactivity (%)	37.3	37.3	37.5	35.9	38.7	...	39.8	33.8
Young age (15–24) (in thous.)	368.7	81.1	100.1	106.1	81.4	...	216.4	152.3
Active	133.4	24.3	39.8	38.4	30.9	...	61.9	71.6
Employed	98.6	19.1	31.2	26.8	21.6	...	43.2	55.4
Unemployed	34.8	5.3	8.6	11.7	9.3	...	18.6	16.2
Inactive	235.3	56.8	60.4	67.6	50.5	...	154.6	80.7
Rate of activity (%)	36.2	30.0	39.7	36.2	37.9	...	28.6	47.0
Rate of employment (%)	26.7	23.5	31.1	25.3	26.6	...	20.0	36.4
Rate of unemployment (%)	26.1	21.7	21.7	30.3	30.0	...	30.1	22.6
Rate of inactivity (%)	63.8	70.0	60.3	63.8	62.1	...	71.4	53.0
Working age (15–64) (in thous.)	2249.8	533.1	616.6	624.4	475.8	...	1330.2	919.7
Active	1685.9	403.6	461.3	471.0	350.0	...	974.3	711.7
Employed	1510.5	373.5	419.9	414.5	302.5	...	860.6	649.8
Unemployed	175.4	30.0	41.4	56.5	47.5	...	113.6	61.8
Inactive	563.9	129.5	155.3	153.4	125.7	...	355.9	208.0
Rate of activity (%)	74.9	75.7	74.8	75.4	73.6	...	73.2	77.4
Rate of employment (%)	67.1	70.1	68.1	66.4	63.6	...	64.7	70.7
Rate of unemployment (%)	10.4	7.4	9.0	12.0	13.6	...	11.7	8.7
Rate of inactivity (%)	25.1	24.3	25.2	24.6	26.4	...	26.8	22.6

1.5. Female population by status of activity, age groups, region and type of settlements, 2019

	Republic of Serbia							
	Total	Srbija – sever		Srbija – jug			Type of settlement	
		Beo-gradski region	Region Vojvodine	Region Šumadije i Zapadne Srbije	Region Južne i Istočne Srbije	Region Kosovo i Metohija	Urban	Other
Aged 15 and over (in thous.)	3065.9	769.7	819.9	837.6	638.7	...	1885.1	1180.9
Active	1444.1	388.3	365.2	403.6	287.0	...	892.3	551.8
Employed	1284.4	352.3	330.6	354.1	247.4	...	786.6	497.8
Unemployed	159.7	36.0	34.6	49.5	39.6	...	105.7	54.0
Inactive	1621.8	381.3	454.7	434.0	351.8	...	992.8	629.1
Rate of activity (%)	47.1	50.5	44.5	48.2	44.9	...	47.3	46.7
Rate of employment (%)	41.9	45.8	40.3	42.3	38.7	...	41.7	42.2
Rate of unemployment (%)	11.1	9.3	9.5	12.3	13.8	...	11.8	9.8
Rate of inactivity (%)	52.9	49.5	55.5	51.8	55.1	...	52.7	53.3
Young age (15–24) (in thous.)	347.3	77.5	93.9	100.4	75.4	...	211.1	136.2
Active	78.7	16.9	25.9	21.0	14.9	...	40.0	38.7
Employed	55.2	12.4	19.9	13.1	9.8	...	28.3	26.8
Unemployed	23.5	4.5	5.9	7.8	5.2	...	11.6	11.9
Inactive	268.6	60.6	68.0	79.5	60.5	...	171.1	97.5
Rate of activity (%)	22.7	21.8	27.6	20.9	19.8	...	18.9	28.4
Rate of employment (%)	15.9	15.9	21.2	13.1	12.9	...	13.4	19.7
Rate of unemployment (%)	29.9	26.9	23.0	37.4	34.6	...	29.1	30.7
Rate of inactivity (%)	77.3	78.2	72.4	79.1	80.2	...	81.1	71.6
Working age (15–64) (in thous.)	2254.3	575.0	607.8	614.1	457.4	...	1404.5	849.7
Active	1382.3	381.0	357.3	376.1	268.0	...	879.0	503.2
Employed	1223.0	345.2	322.9	326.5	228.3	...	773.7	449.3
Unemployed	159.3	35.8	34.3	49.5	39.6	...	105.3	54.0
Inactive	872.0	194.0	250.6	238.0	189.4	...	525.5	346.5
Rate of activity (%)	61.3	66.3	58.8	61.2	58.6	...	62.6	59.2
Rate of employment (%)	54.3	60.0	53.1	53.2	49.9	...	55.1	52.9
Rate of unemployment (%)	11.5	9.4	9.6	13.2	14.8	...	12.0	10.7
Rate of inactivity (%)	38.7	33.7	41.2	38.8	41.4	...	37.4	40.8

1.6. Population by age groups, sex and activity, 2019 (in thous.)

	Total	Active	Employed	Unemployed	Inactive
Total	5924.0	3236.9	2901.0	335.9	2687.0
15–19 years	336.3	31.8	18.6	13.2	304.5
20–24	379.7	180.3	135.2	45.1	199.4
25–29	414.7	319.3	263.4	55.9	95.4
30–34	469.2	400.0	355.4	44.5	69.3
35–39	487.8	423.4	376.0	47.5	64.3
40–44	498.5	433.9	395.0	38.9	64.6
45–49	465.7	391.5	363.3	28.1	74.2
50–54	452.7	351.7	325.2	26.5	101.0
55–59	469.4	317.2	293.3	23.9	152.2
60–64	530.1	219.0	207.9	11.1	311.0
65–69	527.4	95.0	93.9	1.0	432.4
70–74	311.9	37.9	37.7	/	274.0
75 +	580.6	35.9	35.9	-	544.7
Male	2858.0	1792.8	1616.6	176.2	1065.2
15–19 years	172.9	21.8	13.3	8.5	151.1
20–24	195.8	111.6	85.3	26.3	84.2
25–29	212.2	177.6	147.8	29.8	34.6
30–34	239.3	218.7	196.4	22.3	20.6
35–39	248.1	228.6	206.9	21.7	19.6
40–44	251.8	228.8	208.6	20.2	22.9
45–49	232.1	204.4	191.7	12.8	27.7
50–54	221.6	185.3	171.3	14.0	36.3
55–59	225.6	174.0	161.4	12.6	51.6
60–64	250.4	135.1	127.8	7.3	115.3
65–69	241.5	60.6	59.9	/	180.9
70–74	136.5	23.0	22.9	/	113.5
75 +	230.2	23.2	23.2	-	206.9
Female	3065.9	1444.1	1284.4	159.7	1621.8
15–19 years	163.4	10.0	5.2	4.7	153.4
20–24	183.9	68.7	49.9	18.8	115.2
25–29	202.5	141.8	115.7	26.1	60.8
30–34	229.9	181.3	159.0	22.3	48.6
35–39	239.6	194.9	169.1	25.8	44.7
40–44	246.8	205.1	186.4	18.7	41.6
45–49	233.5	187.0	171.7	15.4	46.5
50–54	231.2	166.4	153.9	12.5	64.7
55–59	243.8	143.1	131.9	11.2	100.7
60–64	279.6	83.9	80.1	3.8	195.7
65–69	285.9	34.4	34.0	/	251.5
70–74	175.4	14.8	14.8	-	160.5
75 +	350.4	12.6	12.6	-	337.8

1.7. Population by education, sex and activity, 2019 (in thous.)

	Total	Active	Employed	Unemployed	Inactive
Total	5923.9	3236.9	2901	335.9	2687
No formal education	78.1	6.5	5.5	1.1	71.6
Low	1604.5	538.9	481.8	57.1	1065.7
Medium	3078.6	1857.3	1649.1	208.2	1221.3
High	1162.6	834.2	764.7	69.6	328.4
Early school leavers (18–24) ¹⁾	33.4	17.6	10.1	7.5	15.8
Persons aged 15–24 that are not employed and not attending educational or training courses (NEETs)	109.5	53.6	-	53.6	55.9
Early school leavers (18–24) ²⁾ (%)	6.6	8.5	6.7	13.3	5.3
People who do not either work or study aged 15–24 (NEETs) - rate (%)	15.3	25.3	-	91.9	11.1
Males	2858	1792.8	1616.6	176.2	1065.2
No formal education	17.1	2.9	2.3	/	14.3
Low	663	299	266.1	32.8	364
Medium	1651.8	1117.2	1002.8	114.4	534.6
High	526.1	373.7	345.3	28.4	152.4
Early school leavers (18–24) ¹⁾	17.1	12	6.6	5.4	5
Persons aged 15–24 that are not employed and not attending educational or training courses (NEETs)	54.8	32.2	-	32.2	22.6
Early school leavers (18–24) ²⁾ (%)	6.5	9.3	6.9	16.2	3.8
People who do not either work or study aged 15–24 (NEETs) - rate (%)	14.8	24.1	-	92.3	9.6
Females	3065.9	1444.1	1284.4	159.7	1621.8
No formal education	61.0	3.7	3.1	/	57.3
Low	941.6	239.9	215.7	24.2	701.7
Medium	1426.8	740.1	646.2	93.8	686.8
High	636.5	460.5	419.4	41.1	176.1
Early school leavers (18–24) ¹⁾	16.3	5.5	3.5	2.1	10.8
Persons aged 15–24 that are not employed and not attending educational or training courses (NEETs)	54.8	21.4	-	21.4	33.3
Early school leavers (18–24) ²⁾ (%)	6.7	7.2	6.4	9.1	6.5
People who do not either work or study aged 15–24 (NEETs) - rate (%)	15.8	27.2	-	91.2	12.4

1) Persons aged 18 until 24 with highest completed primary school, that do not attend education or training .

2) The indicator consist of persons aged 18-24 whose highest level of completed education is primary education or less and who did not attend any formal or non-formal education in the last 4 weeks.

1.8. Population based on marital status, sex and activity, 2019 (in thous.)

	Total	Active	Employed	Unemployed	Inactive
Total	5923.9	3236.9	2901.0	335.9	2687.0
Unmarried	1709.8	986.6	807.7	178.9	723.2
Married	3227.8	1989.0	1857.0	132.0	1238.8
Widower / widow	702.6	95.9	91.3	4.6	606.7
Divorced	283.8	165.4	145.0	20.4	118.3
Males	2858.0	1792.8	1616.6	176.2	1065.2
Unmarried	984.0	627.6	517.3	110.4	356.3
Married	1612.9	1064.7	1007.7	57.0	548.2
Widower	147.1	28.6	27.6	1.0	118.5
Divorced	114.1	71.8	64.0	7.8	42.3
Females	3065.9	1444.1	1284.4	159.7	1621.8
Unmarried	725.8	358.9	290.4	68.5	366.9
Married	1614.9	924.3	849.3	75.0	690.6
Widower	555.5	67.2	63.7	3.6	488.2
Divorced	169.7	93.6	81.0	12.7	76.1

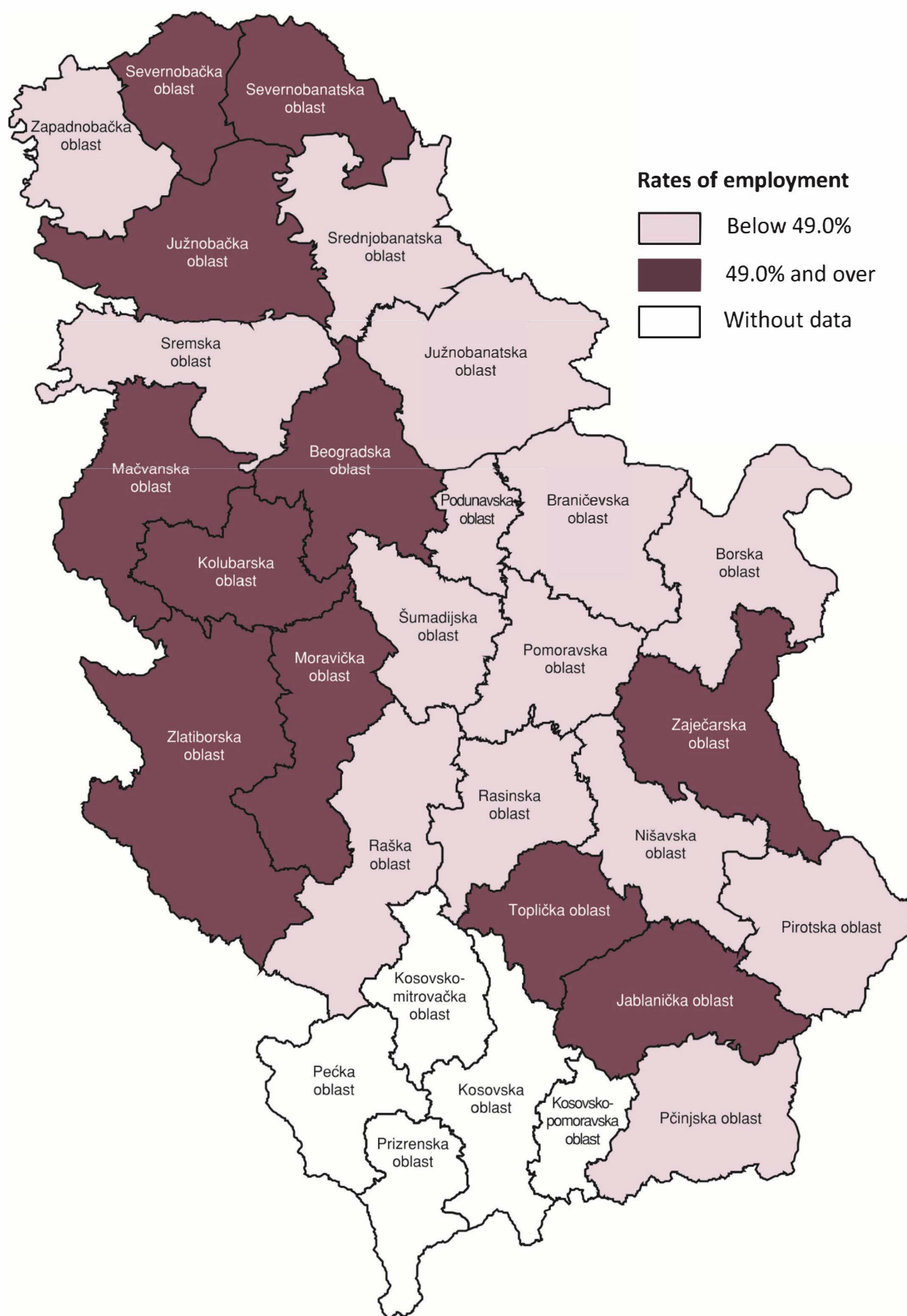
1.9. Status of persons according to the subjective opinion, sex, region and type of settlements, 2019 (in thous.)

	Republic of Serbia							
	Total	Srbija – sever		Srbija – jug			Type of settlement	
		Beo-gradski region	Region Vojvodine	Region Šumadije i Zapadne Srbije	Region Južne i Istočne Srbije	Region Kosovo i Metohija	Urban	Other
Total	5923.9	1437.5	1586.3	1640.7	1259.4	...	3551.2	2372.7
Person doing job, including unpaid workers in family business and junior staff/interns and paid trainees	2404.0	670.7	676.0	628.6	428.7	...	1532.2	871.8
Unemployed	895.2	175.0	223.0	265.0	232.2	...	507.5	387.6
Pupil/student, postgraduate student, unpaid interns	517.8	130.6	128.9	148.7	109.6	...	347.4	170.4
Pensioner	1627.4	386.5	414.5	455.0	371.3	...	977.6	649.8
Person with long-term and permanent disability who do not work	61.6	12.1	21.5	15.3	12.7	...	30.4	31.2
Person on military service	-	-	-	-	-	...	-	-
Person doing housework only	374.7	54.4	110.4	117.4	92.5	...	135.2	239.5
Other inactive persons	39.1	7.1	11.1	9.5	11.4	...	18.1	21.0
Volunteers	4.2	1.1	/	1.2	1.1	...	2.8	1.4
Males	2858.0	667.8	766.4	803.1	620.7	...	1666.2	1191.9
Person doing job, including unpaid workers in family business and junior staff/interns and paid trainees	1342.0	349.5	382.2	362.2	248.1	...	800.4	541.6
Unemployed	486.8	85.6	121.0	146.3	133.9	...	263.0	223.8
Pupil/student, postgraduate student, unpaid interns	246.5	61.7	62.2	71.5	51.1	...	165.9	80.6
Pensioner	707.1	157.9	175.9	205.9	167.3	...	402.8	304.2
Person with long-term and permanent disability who do not work	36.2	7.4	13.0	8.2	7.6	...	17.4	18.8
Person on military service	-	-	-	-	-	...	-	-
Person doing housework only	16.3	1.7	6.0	2.7	5.9	...	4.9	11.4
Other inactive persons	21.5	3.9	5.8	5.5	6.2	...	10.3	11.1
Volunteers	1.6	/	/	/	/	...	1.3	/
Females	3065.9	769.7	819.9	837.6	638.7	...	1885.1	1180.9
Person doing job, including unpaid workers in family business and junior staff/interns and paid trainees	1062.0	321.2	293.8	266.3	180.5	...	731.8	330.2
Unemployed	408.4	89.5	102.0	118.7	98.3	...	244.6	163.8
Pupil/student, postgraduate student, unpaid interns	271.2	68.9	66.7	77.2	58.5	...	181.4	89.8
Pensioner	920.3	228.6	238.6	249.1	204.0	...	574.8	345.6
Person with long-term and permanent disability who do not work	25.4	4.7	8.5	7.1	5.2	...	13.0	12.4
Person on military service	-	-	-	-	-	...	-	-
Person doing housework only	358.4	52.7	104.4	114.7	86.5	...	130.3	228.1
Other inactive persons	17.6	3.2	5.3	4.0	5.2	...	7.7	9.9
Volunteers	2.6	/	/	/	/	...	1.5	1.1

1.10. Rates of activity, unemployment and inactivity for population aged 15 and over by area, 2019 (%)

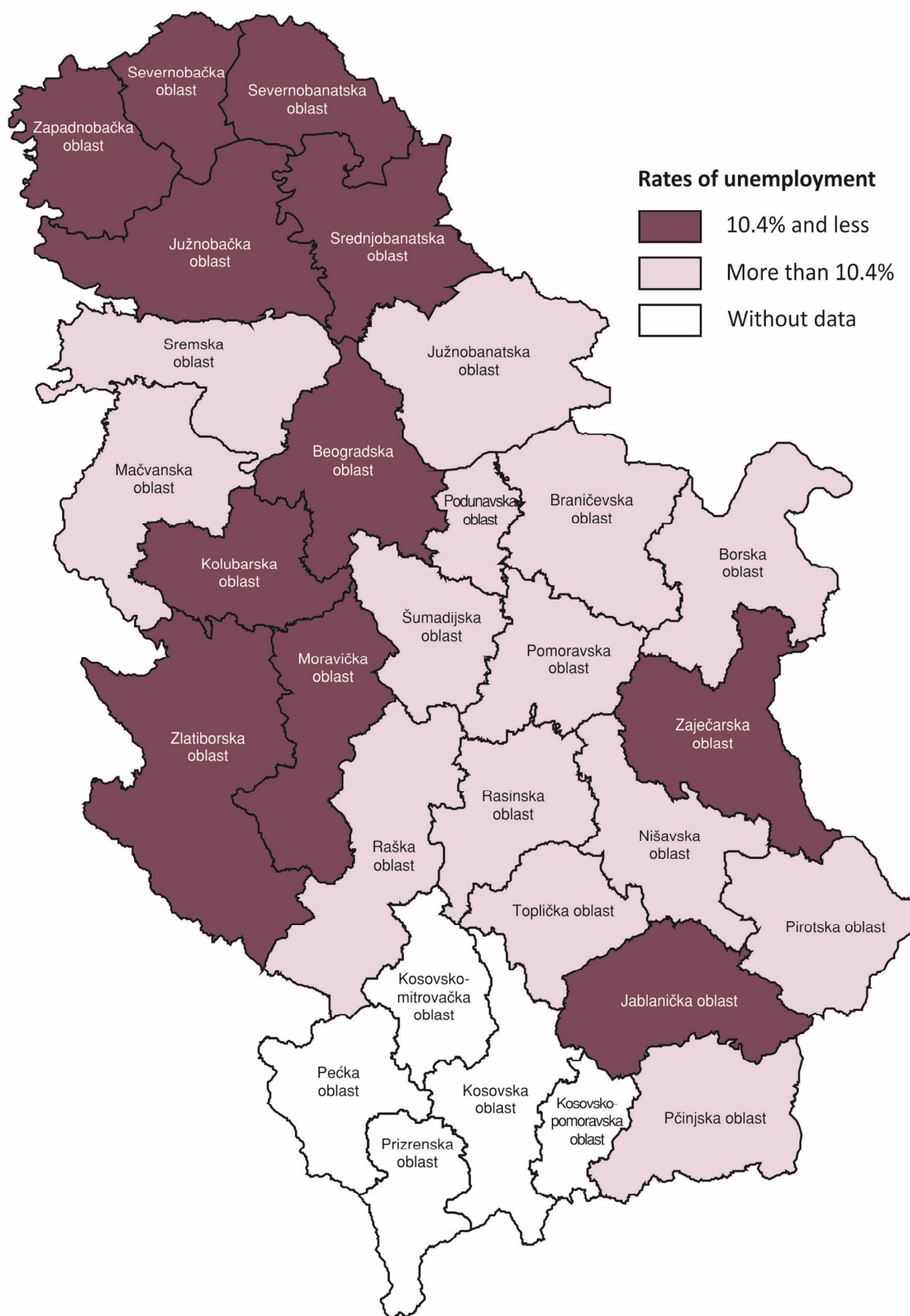
	Rate of activity	Rate of employment	Rate of unemployment	Rate of inactivity
Grad Beograd	56.1	51.5	8.2	43.9
Severnobačka oblast	53.5	49.2	8.1	46.5
Srednjobanatska oblast	51.6	47.5	7.8	48.4
Severnobanatska oblast	53.5	49.4	7.5	46.5
Južnobanatska oblast	49.2	43.5	11.6	50.8
Zapadnobačka oblast	48.9	43.8	10.3	51.1
Južnobačka oblast	55.9	51.8	7.4	44.1
Sremska oblast	54.8	48.5	11.6	45.2
Mačvanska oblast	61.0	54.4	10.8	39.0
Kolubarska oblast	61.3	57.3	6.4	38.7
Podunavska oblast	48.5	42.7	12.0	51.5
Braničevska oblast	49.3	43.8	11.3	50.7
Šumadijska oblast	54.8	48.2	12.1	45.2
Pomoravska oblast	49.1	42.5	13.6	50.9
Borska oblast	49.0	42.0	14.3	51.0
Zaječarska oblast	56.0	50.6	9.6	44.0
Zlatiborska oblast	58.1	53.0	8.8	41.9
Moravička oblast	61.1	56.8	7.0	38.9
Raška oblast	50.4	40.8	19.0	49.6
Rasinska oblast	53.7	46.4	13.6	46.3
Nišavska oblast	55.7	47.5	14.7	44.3
Toplička oblast	57.4	50.6	11.8	42.6
Pirotska oblast	53.1	46.6	12.2	46.9
Jablanička oblast	55.1	50.1	9.1	44.9
Pčinjska oblast	51.6	40.9	20.8	48.4

Rate of employment by areas, 2019



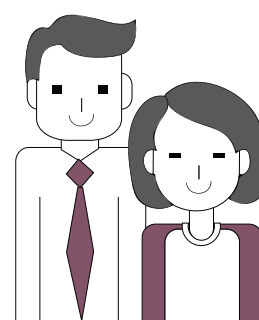
Rate of employment in the Republic of Serbia = 49.0%

Rate of unemployment by areas, 2019



Rate of unemployment in the Republic of Serbia = 10.4%

2



Employed

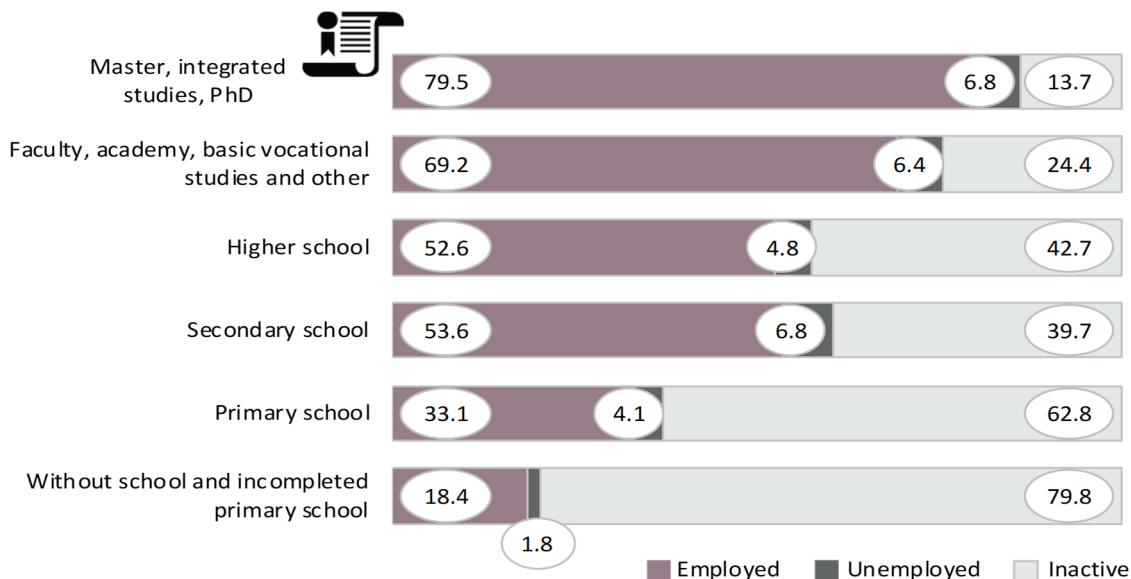
2.1. Employed by age groups, sex, region and type of settlements, 2019 (in thous.)

	Republic of Serbia							
	Total	Srbija – sever		Srbija – jug			Type of settlement	
		Beo-gradski region	Region Vojvodine	Region Šumadije i Zapadne Srbije	Region Južne i Istočne Srbije	Region Kosovo i Metohija	Urban	Other
Total	2901.0	740.5	768.1	812.4	580.0	...	1675.5	1225.5
15–24 years	153.8	31.4	51.1	39.9	31.4	...	71.6	82.2
25–34	618.9	178.3	172.2	153.9	114.4	...	382.2	236.7
35–44	771.0	221.5	209.8	198.8	141.0	...	501.7	269.3
45–54	688.6	173.7	182.2	189.9	142.7	...	409.3	279.3
55–64	501.2	113.8	127.5	158.5	101.4	...	269.7	231.6
65 +	167.5	21.8	25.3	71.4	49.1	...	41.2	126.4
Male	1616.6	388.1	437.5	458.3	332.7	...	888.9	727.7
15–24 years	98.6	19.1	31.2	26.8	21.6	...	43.2	55.4
25–34	344.2	92.0	97.2	89.0	66.0	...	200.0	144.2
35–44	415.5	112.6	117.1	107.4	78.4	...	261.0	154.5
45–54	362.9	87.6	98.8	99.9	76.7	...	207.4	155.5
55–64	289.3	62.3	75.7	91.5	59.8	...	148.9	140.3
65 +	106.1	14.6	17.6	43.8	30.1	...	28.3	77.8
Female	1284.4	352.3	330.6	354.1	247.4	...	786.6	497.8
15–24 years	55.2	12.4	19.9	13.1	9.8	...	28.3	26.8
25–34	274.7	86.3	75.0	64.9	48.4	...	182.2	92.5
35–44	355.5	108.9	92.7	91.4	62.5	...	240.6	114.9
45–54	325.6	86.1	83.4	90.0	66.0	...	201.8	123.8
55–64	212.0	51.4	51.9	67.1	41.6	...	120.7	91.3
65 +	61.4	7.2	7.7	27.5	19.0	...	12.9	48.5

2.2. Employed by level of education, sex, region and type of settlements, 2019 (in thous.)

	Republic of Serbia							
	Total	Srbija – sever		Srbija – jug			Type of settlement	
		Beo-gradski region	Region Vojvodine	Region Šumadije i Zapadne Srbije	Region Južne i Istočne Srbije	Region Kosovo i Metohija	Urban	Other
Total	2901.0	740.5	768.1	812.4	580.0	...	1675.5	1225.5
No formal education	5.5	/	1.9	1.9	1.0	...	1.7	3.8
Low	481.8	40.8	114.9	200.8	125.3	...	112.0	369.8
Medium	1649.1	379.4	472.8	461.5	335.4	...	924.3	724.8
High	764.7	319.6	178.5	148.2	118.3	...	637.6	127.1
Males	1616.6	388.1	437.5	458.3	332.7	...	888.9	727.7
No formal education	2.3	/	1.2	/	/	...	1	1.0
Low	266.1	22.7	71.7	106.0	65.8	...	62.7	203.4
Medium	1002.8	221.8	282.8	288.9	209.4	...	537.4	465.4
High	345.3	143.2	81.9	63.0	57.3	...	287.5	57.8
Females	1284.4	352.3	330.6	354.1	247.4	...	786.6	497.8
No formal education	3.1	/	/	1.5	/	...	/	2.8
Low	215.7	18.1	43.3	94.7	59.5	...	49.3	166.3
Medium	646.2	157.6	190.0	172.6	126.0	...	386.9	259.4
High	419.4	176.4	96.6	85.2	61.1	...	350.0	69.3

Graph 4. Structure of employment, unemployment and inactivity by level of the highest completed education, 2019 (%)



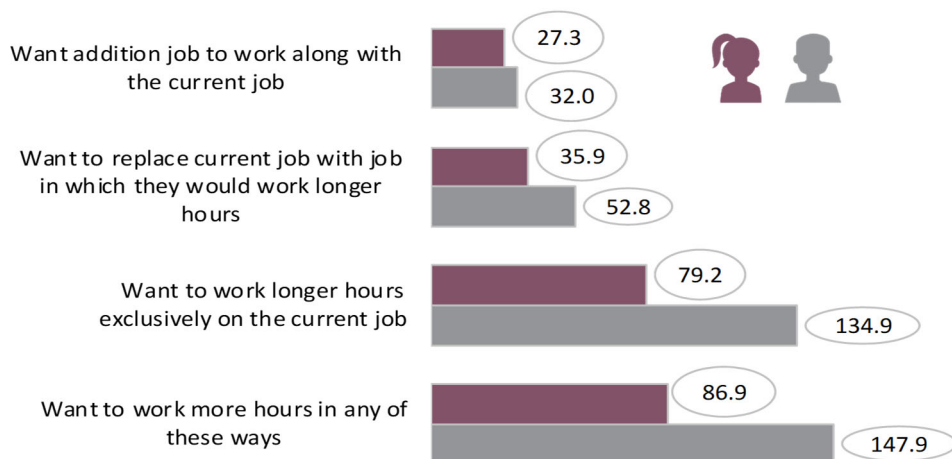
2.3. Employed by professional, status, sex, region and type of settlements, 2019 (in thous.)

	Republic of Serbia							
	Total	Srbija – sever		Srbija – jug			Type of settlement	
		Beo-gradski region	Region Vojvodine	Region Šumadije i Zapadne Srbije	Region Južne i Istočne Srbije	Region Kosovo i Metohija	Urban	Other
Aged 15 and over	2901.0	740.5	768.1	812.4	580.0	...	1675.5	1225.5
Self-employed with employees	98.3	32.1	26.1	26.3	13.9	...	72.8	25.6
Self-employed w/o employees	567.9	82.7	120.4	211.3	153.5	...	179.5	388.4
Employees	2097.7	617.5	599.7	493.3	387.2	...	1410.1	687.6
Contributing family workers	137.1	8.0	22.0	81.5	25.5	...	13.1	124.0
Working age (15–64)	2733.5	718.7	742.9	741.0	530.9	...	1634.4	1099.1
Self-employed with employees	94.4	30.5	25.3	25.4	13.2	...	69.3	25.1
Self-employed w/o employees	449.6	72.5	105.2	160.3	111.7	...	158.8	290.8
Employees	2079.3	609.5	593.2	490.9	385.7	...	1394.9	684.4
Contributing family workers	110.2	6.3	19.2	64.4	20.3	...	11.3	98.9
Males								
Aged 15 and over	1616.6	388.1	437.5	458.3	332.7	...	888.9	727.7
Self-employed with employees	69.4	22.5	18.2	18.7	10.0	...	49.8	19.6
Self-employed w/o employees	394.5	57.7	88.2	149.9	98.8	...	124.9	269.6
Employees	1114.8	305.8	323.0	269.5	216.5	...	709.0	405.8
Contributing family workers	37.9	2.2	8.0	20.1	7.5	...	5.3	32.6
Working age (15–64)	1510.5	373.5	419.9	414.5	302.5	...	860.6	649.8
Self-employed with employees	66.0	21.1	17.5	18.0	9.4	...	46.8	19.1
Self-employed w/o employees	310.9	50.2	76.4	112.5	71.8	...	109.8	201.1
Employees	1103.0	300.5	319.0	268.0	215.6	...	699.4	403.6
Contributing family workers	30.6	1.7	7.1	16.0	5.8	...	4.6	26.0
Females								
Aged 15 and over	1284.4	352.3	330.6	354.1	247.4	...	786.6	497.8
Self-employed with employees	28.9	9.6	7.9	7.5	3.9	...	23.0	6.0
Self-employed w/o employees	173.4	25.1	32.2	61.4	54.7	...	54.6	118.7
Employees	982.9	311.8	276.6	223.8	170.7	...	701.2	281.8
Contributing family workers	99.2	5.8	14.0	61.3	18.1	...	7.9	91.4
Working age (15–64)	1223.0	345.2	322.9	326.5	228.3	...	773.7	449.3
Self-employed with employees	28.4	9.4	7.8	7.4	3.9	...	22.5	5.9
Self-employed w/o employees	138.7	22.2	28.8	47.8	39.9	...	49.0	89.7
Employees	976.3	309.0	274.2	222.9	170.2	...	695.6	280.8
Contributing family workers	79.5	4.5	12.1	48.4	14.5	...	6.7	72.8

2.4. Employed with the usual working hours, sex, region and type of settlements, 2019 (in thous.)

	Republic of Serbia							
	Total	Srbija – sever		Srbija – jug			Type of settlement	
		Beo-gradski region	Region Vojvo-dine	Region Šumadije i Zapadne Srbije	Region Južne i Istočne Srbije	Region Kosovo i Metohija	Urban	Other
Total	2901.0	740.5	768.1	812.4	580.0	...	1675.5	1225.5
1–14 hours	17.0	5.0	3.3	3.4	5.4	...	8.7	8.3
15–35	128.2	25.0	28.2	38.5	36.5	...	51.7	76.5
36–48	1978.7	578.3	561.9	472.9	365.6	...	1331.0	647.7
49–59	109.4	24.8	21.6	43.7	19.3	...	48.6	60.8
More than 60 work hours	114.8	22.7	22.6	52.7	16.8	...	46.7	68.1
Varying usual work hours per week	553.0	84.6	130.6	201.3	136.5	...	189.0	364.0
Males	1616.6	388.1	437.5	458.3	332.7	...	888.9	727.7
1–14 hours	7.7	2.5	/	1.6	2.6	...	3.9	3.7
15–35	58.7	9.7	14.2	17.2	17.5	...	20.7	38.0
36–48	1034.2	281.9	295.2	254.2	202.9	...	660.6	373.7
49–59	73.7	18.8	17.6	24.9	12.5	...	35.4	38.4
More than 60 work hours	89.5	18.5	17.8	40.6	12.6	...	36.9	52.6
Varying usual work hours per week	352.8	56.7	91.8	119.8	84.5	...	131.4	221.3
Females	1284.4	352.3	330.6	354.1	247.4	...	786.6	497.8
1–14 hours	9.3	2.6	2.3	1.7	2.8	...	4.7	4.6
15–35	69.5	15.3	14.0	21.3	19.0	...	31.0	38.6
36–48	944.4	296.4	266.7	218.7	162.7	...	670.4	274.0
49–59	35.6	6.0	4.0	18.8	6.8	...	13.2	22.4
More than 60 work hours	25.2	4.2	4.7	12.1	4.1	...	9.8	15.5
Varying usual work hours per week	200.2	27.9	38.8	81.5	52.0	...	57.5	142.7

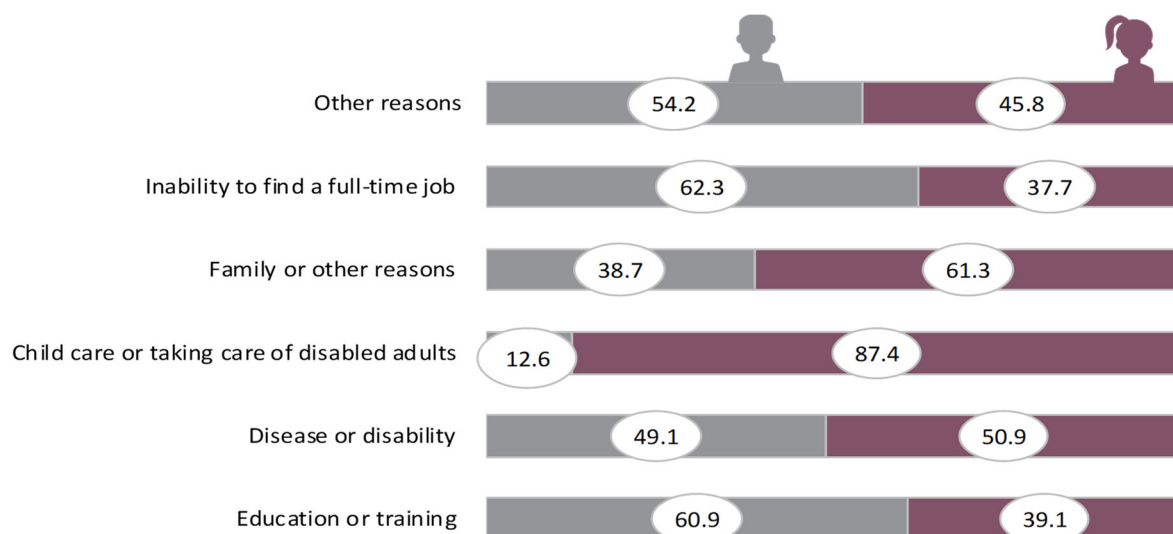
Graph 5. Employees who want to work longer hours, by sex, 2019. (in thous.)



2.5. Employed by ownership, working hours, sex and region, 2019 (in thous.)

	Republic of Serbia							
	Total	Sex		Srbija – sever		Srbija – jug		
		Male	Female	Beo-gradski region	Region Vojvo-dine	Region Šuma-dije i Zapadne Srbije	Region Južne i Istočne Srbije	Region Kosovo i Metohija
Aged 15 and over	2901.0	1616.6	1284.4	740.5	768.1	812.4	580.0	...
Private ownership registered	1847.1	1068.5	778.6	458.9	525.9	532.4	329.9	...
Full-time job	1692.3	991.3	701.0	429.6	485.9	473.9	302.9	...
Part-time job	154.8	77.2	77.7	29.3	40.0	58.5	27.0	...
Private ownership not registered	286.6	175.3	111.3	35.7	56.3	93.9	100.6	...
Full-time job	122.5	83.4	39.1	15.4	25.2	45.5	36.4	...
Part-time job	164.1	92.0	72.2	20.4	31.1	48.5	64.3	...
State ownership	727.8	344.6	383.2	230.8	172.6	179.0	145.4	...
Full-time job	707.3	337.7	369.6	224.4	166.9	174.6	141.4	...
Part-time job	20.5	7.0	13.6	6.4	5.7	4.4	4.0	...
Other	39.5	28.2	11.3	15.1	13.2	7.1	4.1	...
Full-time job	23.7	17.7	6.0	9.7	6.7	4.6	2.7	...
Part-time job	15.8	10.5	5.3	5.4	6.6	2.5	1.3	...
Working age (15–64)	2733.5	1510.5	1223.0	718.7	742.9	741.0	530.9	...
Private ownership registered	1755.7	1007.2	748.6	446.1	511.5	485.3	312.9	...
Full-time job	1639.2	952.8	686.4	422.5	478.3	444.6	293.8	...
Part-time job	116.5	54.4	62.2	23.6	33.2	40.6	19.1	...
Private ownership not registered	216.5	134.0	82.6	30.0	47.3	70.2	69.0	...
Full-time job	102.7	69.9	32.8	13.6	23.0	37.2	28.9	...
Part-time job	113.8	64.0	49.8	16.4	24.3	33.0	40.1	...
State ownership	723.7	342.4	381.2	228.4	171.5	178.7	145.0	...
Full-time job	704.5	336.0	368.5	222.8	166.3	174.3	141.1	...
Part-time job	19.2	6.5	12.7	5.7	5.2	4.3	4.0	...
Other	37.5	26.9	10.6	14.2	12.5	6.9	3.9	...
Full-time job	23.2	17.3	5.9	9.4	6.5	4.6	2.7	...
Part-time job	14.4	9.7	4.7	4.8	6.0	2.2	1.3	...

Graph 6. Employed by reasons of work shorter than full-time by sex, 2019



2.6. Employed by sector of activity, sex and region, 2019 (in thous.)

	Republic of Serbia							
	Total	Sex		Srbija – sever		Srbija – jug		
		Male	Female	Beo-gradski region	Region Vojvo-dine	Region Šuma-dije i Zapadne Srbije	Region Južne i Istočne Srbije	Region Kosovo i Metohija
Aged 15 and over	2901.0	1616.6	1284.4	740.5	768.1	812.4	580.0	...
No response	-	-	-	-	-	-	-	...
Agriculture, forestry and fishing	452.7	282.3	170.4	21.6	116.4	222.3	92.5	...
Mining and quarrying	30.9	26.9	4.0	9.9	4.0	8.3	8.7	...
Manufacturing	542.0	332.1	209.9	78.9	190.8	153.2	119.0	...
Electricity and gas supply	38.3	29.5	8.7	13.7	6.9	6.8	10.9	...
Water supply, waste management	45.8	35.3	10.5	7.9	15.1	13.0	9.8	...
Construction	139.0	128.5	10.5	39.1	37.8	33.7	28.3	...
Wholesale and retail trade; repair of motor vehicles	386.0	172.8	213.2	125.6	101.2	94.1	65.0	...
Transportation and storage	157.0	125.1	31.9	56.2	41.7	36.6	22.5	...
Accommodation and food service activities	105.2	53.2	52.0	34.6	28.3	25.5	16.8	...
Information and communication	78.4	48.2	30.2	46.3	16.6	9.0	6.6	...
Financial and insurance activities	46.7	16.6	30.1	25.5	9.8	6.6	4.7	...
Real estate activities	4.9	2.7	2.2	2.7	1	/	/	...
Professional, scientific and technical activities	95.3	47.5	47.8	51.7	21.8	12.7	9.1	...
Administrative and support service activities	53.1	30.1	23.0	25.6	12.7	8.2	6.7	...
Public administration and defence; compulsory social security	152.4	84.5	67.8	47.5	33.5	37.5	33.8	...
Education	183.2	48.0	135.2	55.5	45.0	44.0	38.7	...
Human health and social work activities	158.8	37.6	121.1	51.1	45.0	34.8	27.8	...
Arts, entertainment and recreation	47.7	29.1	18.5	18.2	11.4	11.4	6.6	...
Other service activities	50.7	23.9	26.8	17.0	15.0	11.7	6.9	...
Activities of households as employers	132.2	62.1	70.1	10.9	13.9	42.0	65.4	...
Act of extraterritorial organizations and bodies	/	/	/	/	-	-	-	...

2.6. Employed by sector of activity, sex and region, 2019 (in thous.) (continued)

	Republic of Serbia							
	Total	Sex		Srbija – sever		Srbija – jug		
		Male	Female	Beo-gradski region	Region Vojvo-dine	Region Šuma-dije i Zapadne Srbije	Region Južne i Istočne Srbije	Region Kosovo i Metohija
Working age (15–64)	2733.5	1510.5	1223.0	718.7	742.9	741.0	530.9	...
No response	-	-	-	-	-	-	-	0
Agriculture, forestry and fishing	366.1	225.7	140.5	16.8	104.2	171.5	73.6	...
Mining and quarrying	30.9	26.9	4.0	9.9	4.0	8.3	8.7	...
Manufacturing	536.9	327.7	209.3	77.7	189.0	152.3	117.9	...
Electricity and gas supply	38.2	29.5	8.7	13.7	6.9	6.8	10.9	...
Water supply, waste management	45.6	35.1	10.5	7.9	15.0	12.9	9.8	...
Construction	136.3	126.0	10.3	38.0	37.1	33.1	28.1	...
Wholesale and retail trade; repair of motor vehicles	381.9	169.9	212.1	123.9	99.9	93.7	64.4	...
Transportation and storage	154.6	123.0	31.6	54.8	41.2	36.2	22.4	...
Accommodation and food service activities	104.4	52.6	51.8	34.2	28.1	25.3	16.8	...
Information and communication	77.5	47.5	30.0	45.7	16.5	9.0	6.4	...
Financial and insurance activities	45.9	15.9	30.0	24.9	9.6	6.6	4.7	...
Real estate activities	4.8	2.7	2.1	2.6	1	/	/	...
Professional, scientific and technical activities	91.1	44.2	46.9	49.2	20.7	12.3	9.0	...
Administrative and support service activities	52.1	29.8	22.3	25.5	12.3	7.8	6.6	...
Public administration and defence; compulsory social security	151.3	84.0	67.3	47.0	33.2	37.4	33.7	...
Education	182.2	47.5	134.7	55.0	44.7	44.0	38.6	...
Human health and social work activities	155.8	36.5	119.3	49.4	44.3	34.5	27.5	...
Arts, entertainment and recreation	46.8	28.6	18.3	17.6	11.2	11.4	6.6	...
Other service activities	48.8	22.7	26.1	16.4	14.4	11.3	6.6	...
Activities of households as employers	81.2	34.2	47.0	7.7	9.2	25.7	38.4	...
Act of extraterritorial organizations and bodies	/	/	/	/	–	–	–	...

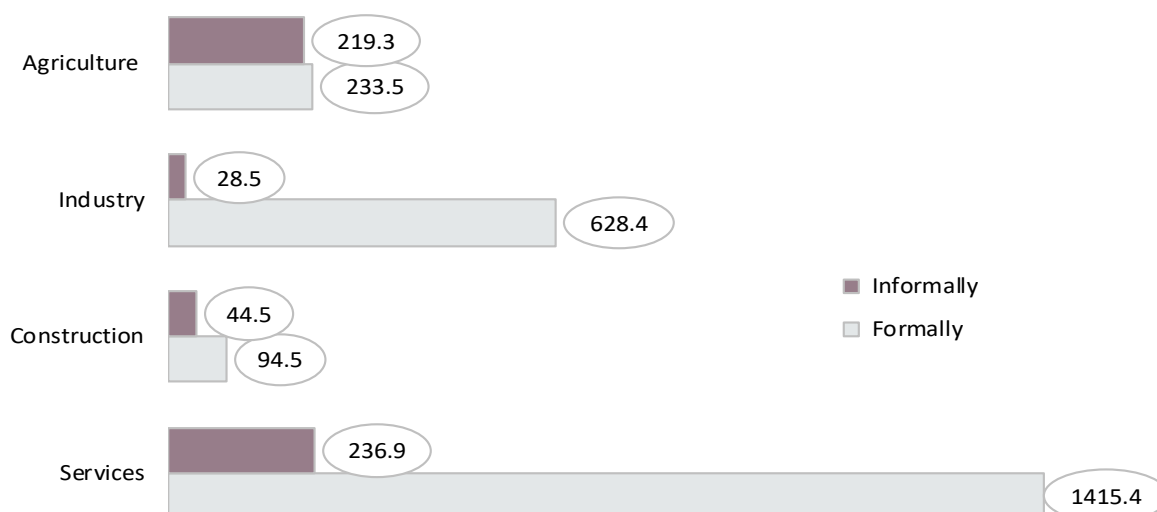
2.7. Employed by occupation, sex and region, 2019 (in thous.)

	Republic of Serbia							
	Total	Sex		Srbija – sever		Srbija – jug		
		Male	Female	Beo-gradski region	Region Vojvo-dine	Region Šuma-dije i Zapadne Srbije	Region Južne i Istočne Srbije	Region Kosovo i Metohija
Aged 15 and over	2901.0	1616.6	1284.4	740.5	768.1	812.4	580.0	...
Legislators, administrative officials and managers	83.8	56.4	27.4	30.7	25.3	18.0	9.8	...
Professional and art experts	399.8	165.8	234.0	181.3	91.8	67.1	59.6	...
Engineers, professional associates and technicians	328.4	155.8	172.6	115.5	93.1	67.2	52.7	...
Civil and other servants	230.7	92.8	137.9	100.3	50.9	46.3	33.1	...
Service and trade assistants	433.1	186.2	246.9	119.5	117.8	114.4	81.4	...
Qualified workers in agriculture, forestry and fishing	499.1	289.2	209.9	27.8	81.8	243.5	146.0	...
Craftsmen and other	337.4	279.8	57.6	62.9	106.7	98.4	69.5	...
Machine operators and assemblers	309.9	243.2	66.7	51.9	106.5	82.9	68.5	...
Basic/manual labourers	263.0	132.4	130.6	48.4	91.4	70.4	52.9	...
Military occupations	15.8	15.1	/	2.2	3.0	4.2	6.5	...
Working age (15–64)	2733.5	1510.5	1223.0	718.7	742.9	741.0	530.9	...
Legislators, administrative officials and managers	81.6	54.3	27.3	29.1	25.1	17.8	9.6	...
Professional and art experts	391.1	160.2	230.9	176.5	89.7	66.4	58.5	...
Professional associates and technicians	324.8	153.6	171.2	113.9	91.6	66.8	52.6	...
Civil and other servants	229.2	92.4	136.8	99.4	50.5	46.2	33.0	...
Service and trade assistants	428.7	183.6	245.0	118.0	116.2	113.9	80.6	...
Qualified workers in agriculture, forestry and fishing	365.5	206.1	159.3	20.1	67.0	177.6	100.7	...
Craftsmen and other	331.3	274.3	57.1	61.4	104.5	96.9	68.5	...
Machine operators and assemblers	307.0	240.3	66.7	50.4	105.8	82.4	68.4	...
Basic/manual labourers	258.5	130.6	127.9	47.7	89.5	68.8	52.5	...
Military occupations	15.8	15.1	/	2.2	3.0	4.2	6.5	...

2.8. Employed in formal or informal employment, by groups of age, professional status, sex and region, 2019 (in thous.)

	Republic of Serbia							
	Total	Sex		Srbija – sever		Srbija – jug		
		Male	Female	Beo-gradski region	Region Vojvo-dine	Region Šuma-dije i Zapadne Srbije	Region Južne i Istočne Srbije	Region Kosovo i Metohija
Total	2901.0	1616.6	1284.4	740.5	768.1	812.4	580.0	...
Formally employed aged 15 and over	2371.8	1326.1	1045.7	661.8	651.7	617.9	440.4	...
15–24 years	116.3	72.4	43.8	24.8	42.4	25.2	23.8	...
25–54	1803.3	968.0	835.2	525.8	493.4	449.7	334.3	...
55–64	384.9	231.5	153.4	98.6	104.3	112.4	69.6	...
65 and over	67.3	54.1	13.2	12.5	11.6	30.6	12.6	...
By employment status								
Self-employed with employees	97.3	68.4	28.9	31.8	25.9	25.9	13.8	...
Self-employed w/o employees	303.3	223.5	79.8	46.4	70.0	127.3	59.5	...
Employees	1971.1	1034.2	937.0	583.5	555.9	464.6	367.1	...
Contributing family workers	-	-	-	-	-	-	-	...
Informally employed aged 15 and over	529.2	290.5	238.7	78.7	116.4	194.5	139.6	...
15–24 years	37.5	26.2	11.4	6.6	8.6	14.8	7.5	...
25–54	275.2	154.6	120.6	47.7	70.8	92.9	63.8	...
55–64	116.3	57.7	58.6	15.2	23.2	46.1	31.8	...
65 and over	100.2	52.0	48.2	9.2	13.7	40.8	36.5	...
By employment status								
Self-employed with employees	/	/	–	/	/	/	/	...
Self-employed w/o employees	264.6	171.0	93.6	36.3	50.4	84.0	93.9	...
Employees	126.6	80.6	46.0	34.0	43.8	28.7	20.1	...
Contributing family workers	137.1	37.9	99.2	8.0	22.0	81.5	25.5	...
Informal employment rate	18.2	18.0	18.6	10.6	15.2	23.9	24.1	...

Graph 7. Formally/informally employed by sector of activities, 2019 (in thous.)



Note

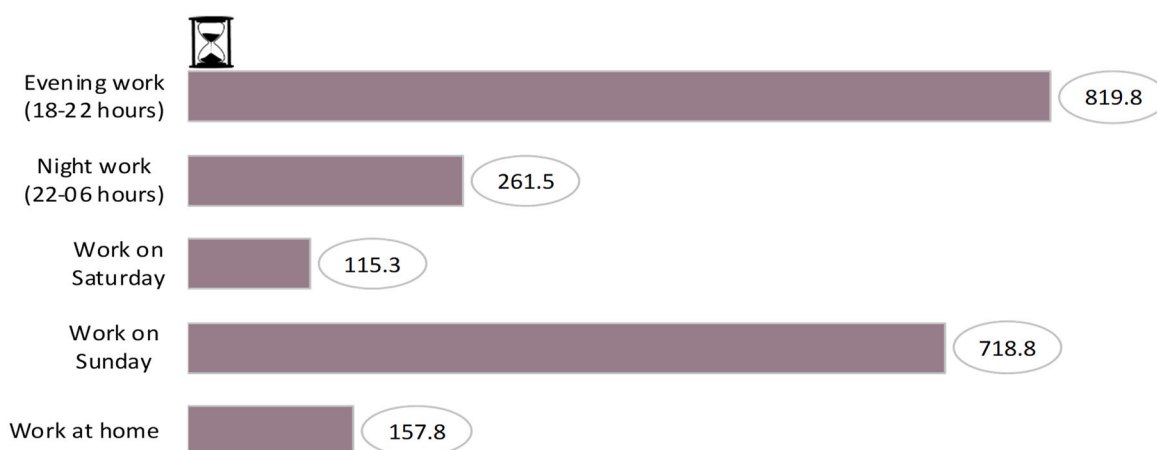
Section of agriculture includes Agriculture, forestry and fishing.

Section of industry includes Mining and quarrying, Manufacturing, Electricity and gas supply, Water supply and waste management.

Section of construction includes only Construction.

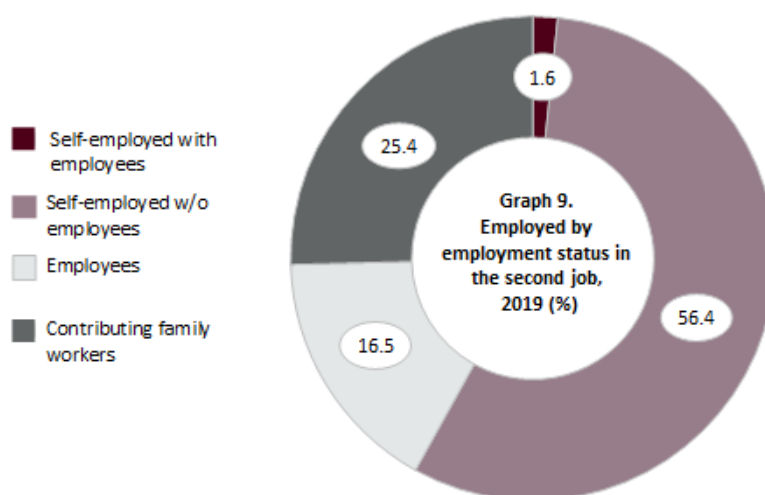
Section of services includes Wholesale and retail trade, Transportation and storage, Accommodation and food service activities, Information and communication, Financial and insurance activities, Real estate activities, Professional, scientific and technical activities, Administrative and support service activities, Public administration and compulsory social security, Education, Human health and social work activities, Arts, entertainment and recreation, Other service activities, Activities of households as employers, Activities of extraterritorial organizations and bodies.

Graph 8. Employed by specific types of working hours, 2019 (in thous.)

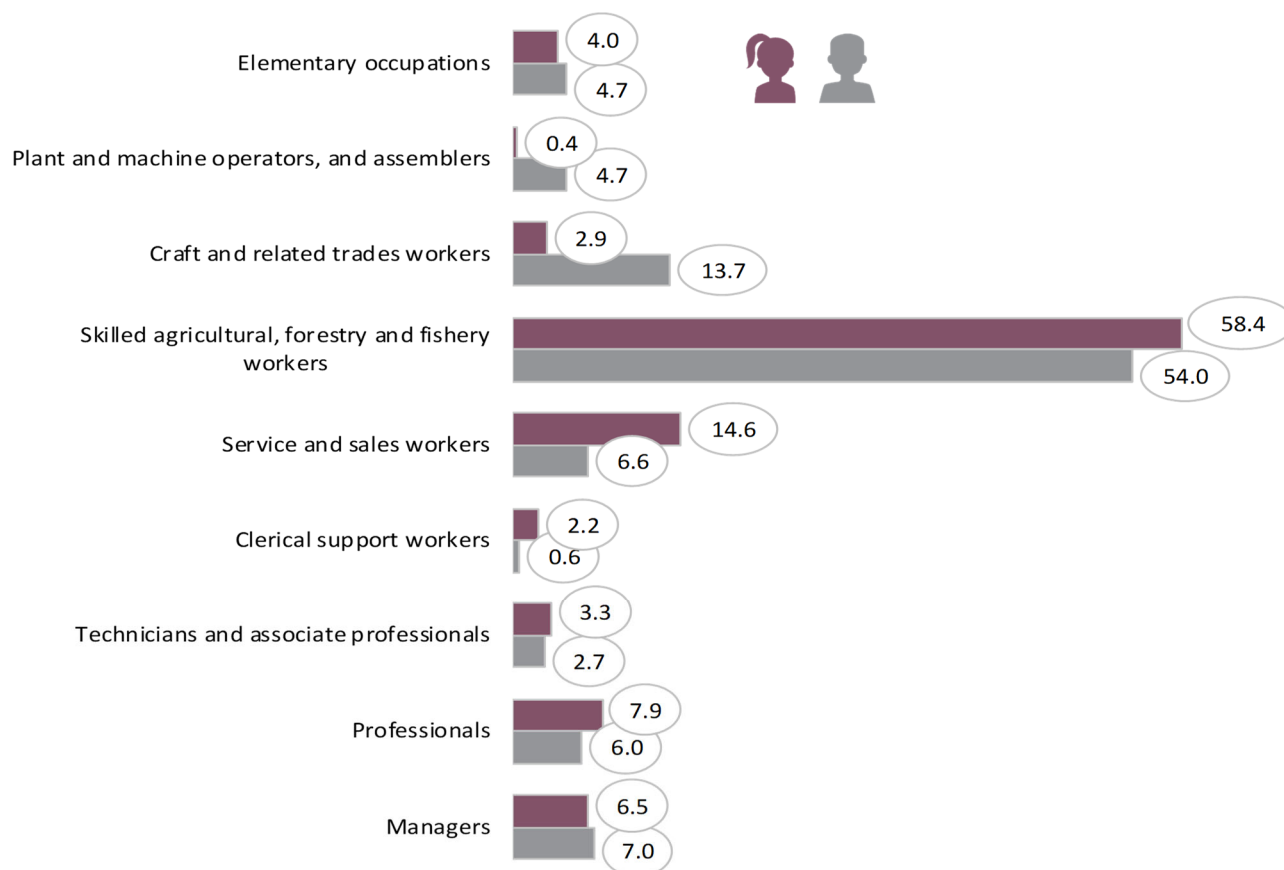


2.9. Employed according to whether they seek another job, reasons for seeking another job, sex and region, 2019 (in thous.)

	Republic of Serbia							
	Total	Sex		Srbija – sever		Srbija – jug		
		Male	Female	Beo-gradski region	Region Vojvo-dine	Region Šuma-dije i Zapadne Srbije	Region Južne i Istočne Srbije	Region Kosovo i Metohija
Total	2901.0	1616.6	1284.4	740.5	768.1	812.4	580.0	...
Employed which didn't seek job in the last four weeks	2765.9	1531.6	1234.2	704.4	734.4	774.8	552.2	...
Employed which were seeking job in the last four weeks, reason:	135.1	85.0	50.2	36.0	33.7	37.6	27.9	...
There is a risk of losing present job, or the work being performed is of limited duration	3.9	2.3	1.6	/	1.1	1.4	/	...
Present work is accepted as temporary	34.2	23.5	10.7	7.2	6.8	11.3	8.9	...
Search of extra job that would be performed in addition to current job	6.4	3.9	2.5	1.6	1.9	1.6	1.3	...
Desire to find a job with better conditions (higher wages, more convenient working hours or transport, the ability to better express their own abilities)	88.6	54.1	34.5	26.0	22.9	23.0	16.7	...
Other	2.1	1.1	/	/	/	/	/	...



Graph 10. Self-employed by occupation and sex, 2019 (%)



2.10. Employees by type of contract and employment rights, sex, region and type of settlements, 2019 (in thous.)

	Republic of Serbia							
	Total	Srbija – sever		Srbija – jug			Type of settlement	
		Beo-gradski region	Region Vojvo-dine	Region Šuma-dije i Zapadne Srbije	Region Južne i Istočne Srbije	Region Kosovo i Metohija	Urban	Other
Total	1940.2	570.6	558.2	449.5	362.0	...	1317.0	623.3
Employees by contract on employment								
Written contract on employment	1803.7	537.7	506.5	419.7	339.8	...	1238.8	565.0
Verbally agreed employment	136.5	32.8	51.7	29.8	22.2	...	78.2	58.3
Entitlements from employment								
Entitlement to pension insurance	1778.0	527.7	499.1	414.5	336.6	...	1220.7	557.2
No entitlement to pension insurance	162.3	42.8	59.1	35.0	25.4	...	96.2	66.0
Entitlement to health insurance	1777.0	526.6	499.5	414.3	336.5	...	1219.4	557.6
No entitlement to health insurance	163.3	43.9	58.6	35.1	25.5	...	97.5	65.7
Entitlement to paid sick leave	1727.2	511.8	488.0	400.3	327.1	...	1189.1	538.1
No entitlement to paid sick leave	213.1	58.8	70.2	49.2	34.9	...	127.9	85.2
Entitlement to annual paid leave	1721.0	510.9	487.4	397.1	325.6	...	1185.3	535.8
No entitlement to annual paid leave	219.2	59.7	70.8	52.3	36.4	...	131.7	87.5
Males	1035.4	277.9	302.6	251.4	203.5	...	663.3	372.1
Employees by contract on employment								
Written contract on employment	951.3	261.2	270.1	231.6	188.4	...	617.2	334.1
Verbally agreed employment	84.0	16.6	32.6	19.8	15.1	...	46.0	38.0
Entitlements from employment								
Entitlement to pension insurance	934.9	255.2	265.7	228.0	186.1	...	606.4	328.6
No entitlement to pension insurance	100.5	22.7	37.0	23.4	17.4	...	56.9	43.5
Entitlement to health insurance	934.8	254.9	265.6	228.3	186.1	...	606.2	328.7
No entitlement to health insurance	100.5	23.0	37.0	23.1	17.4	...	57.1	43.4
Entitlement to paid sick leave	906.5	246.4	258.4	221.0	180.6	...	589.4	317.0
No entitlement to paid sick leave	128.9	31.4	44.2	30.4	22.9	...	73.8	55.1
Entitlement to annual paid leave	902.5	245.6	258.2	219.0	179.7	...	587.2	315.2
No entitlement to annual paid leave	132.9	32.2	44.4	32.4	23.8	...	76.0	56.9

**2.10. Employees by type of contract and employment rights, sex, region and type of settlements,
2019 (in thous.) (continued)**

	Republic of Serbia							
	Total	Srbija – sever		Srbija – jug			Type of settlement	
		Beo-gradski region	Region Vojvo-dine	Region Šuma-dije i Zapadne Srbije	Region Južne i Istočne Srbije	Region Kosovo i Metohija	Urban	Other
Females	904.9	292.7	255.6	198.1	158.5	...	653.7	251.2
Employees by contract on employment								
Written contract on employment	852.4	276.5	236.4	188.1	151.4		621.5	230.9
Verbally agreed employment	52.5	16.2	19.2	10.0	7.1	...	32.2	20.3
Entitlements from employment								
Entitlement to health insurance	843.1	272.5	233.4	186.5	150.6	...	614.4	228.7
No entitlement to health insurance	61.8	20.2	22.1	11.6	8.0	...	39.3	22.5
Entitlement to paid sick leave	842.1	271.8	233.9	186.1	150.4	...	613.3	228.9
No entitlement to paid sick leave	62.7	20.9	21.7	12.0	8.2	...	40.4	22.3
Entitlement to annual paid leave	820.7	265.4	229.5	179.2	146.6	...	599.6	221.1
No entitlement to annual paid leave	84.2	27.3	26.0	18.8	12.0	...	54.1	30.1
Entitlement to annual paid leave	818.5	265.2	229.2	178.2	145.9	...	598.0	220.5
No entitlement to annual paid leave	86.3	27.5	26.3	19.9	12.6	...	55.7	30.6

2.11. Employees by sector of activity, sex, region and type of settlements, 2019 (in thous.)

	Republic of Serbia							
	Total	Srbija – sever		Srbija – jug			Type of settlement	
		Beo-gradski region	Region Vojvodine	Region Šumadije i Zapadne Srbije	Region Južne i Istočne Srbije	Region Kosovo i Metohija	Urban	Other
Total	2097.7	617.5	599.7	493.3	387.2	...	1410.1	687.6
Agriculture	60.2	1.6	38.4	13.0	7.1	...	21.9	38.3
Industry	609.7	99.3	200.8	168.1	141.4	...	354.6	255.1
Construction	100.0	29.5	26.7	23.8	20.0	...	57.9	42.0
Services	1327.8	487.1	333.7	288.4	218.7	...	975.7	352.1
Males	1114.8	305.8	323.0	269.5	216.5	...	709.0	405.8
Agriculture	45.1	1.0	29.2	9.9	5.0	...	16.3	28.9
Industry	387.3	65.7	126.1	108.3	87.1	...	222.7	164.6
Construction	90.6	25.3	23.7	22.3	19.4	...	49.9	40.7
Services	591.8	213.8	144.1	129.0	105.0	...	420.1	171.7
Females	982.9	311.8	276.6	223.8	170.7	...	701.2	281.8
Agriculture	15.1	/	9.3	3.1	2.1	...	5.6	9.4
Industry	222.4	33.6	74.7	59.8	54.3	...	131.9	90.6
Construction	9.3	4.2	3.0	1.5	/	...	8.0	1.3
Services	736.1	273.4	189.6	159.4	113.7	...	555.6	180.5



Note

Section of agriculture includes Agriculture, forestry and fishing.

Section of industry includes Mining and quarrying, Manufacturing, Electricity and gas supply, Water supply and waste management.

Section of construction includes only Construction.

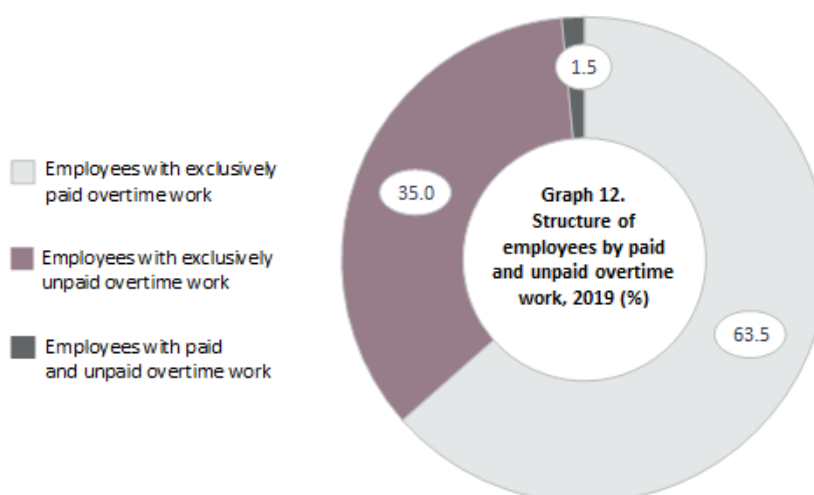
Section of services includes Wholesale and retail trade, Transportation and storage, Accommodation and food service activities, Information and communication, Financial and insurance activities, Real estate activities, Professional, scientific and technical activities, Administrative and support service activities, Public administration and compulsory social security, Education, Human health and social work activities, Arts, entertainment and recreation, Other service activities, Activities of households as employers, Activities of extraterritorial organizations and bodies.

**Graph 11. Employees workers who are obliged to control the work of other workers ,
by sex 2019 (%)**



Note

Refers to the employee that controls and manages the operation of at least one employee (other than an apprentice) and whose control function is in description of his/her work.



2.12. Employees by occupation, sex, region and type of settlements, 2019 (in thous.)

	Republic of Serbia							
	Total	Srbija – sever		Srbija – jug			Type of settlement	
		Beo-gradski region	Region Vojvo-dine	Region Šuma-dije i Zapadne Srbije	Region Južne i Istočne Srbije	Region Kosovo i Metohija	Urban	Other
Total	2097.7	617.5	599.7	493.3	387.2	...	1410.1	687.6
Legislators, administrative officials and managers	38.2	11.4	13.0	8.0	5.8	...	31.4	6.8
Professional and art experts	355.7	157.7	81.2	62.1	54.7	...	303.3	52.4
Professional associates and technicians	308.9	106.4	89.2	62.7	50.6	...	236.2	72.7
Civil and other servants	223.0	97.0	48.6	44.8	32.7	...	174.3	48.7
Service and trade assistants	368.9	103.8	100.3	95.8	69.0	...	244.5	124.4
Qualified workers in agriculture, forestry and fishing	8.2	/	4.0	2.2	/	...	2.7	5.5
Craftsmen and other	267.0	48.6	84.4	77.6	56.4	...	140.9	126.1
Machine operators and assemblers	287.0	45.6	100.9	75.8	64.7	...	148.4	138.6
Basic/manual labourers	225.0	44.0	75.0	60.3	45.8	...	117.6	107.5
Military occupations	15.8	2.2	3.0	4.2	6.5	...	10.8	5.0
Males	1114.8	305.8	323.0	269.5	216.5	...	709.0	405.8
Legislators, administrative officials and managers	23.9	7.3	7.6	5.5	3.6	...	19.3	4.6
Professional and art experts	137.7	61.5	31.5	22.2	22.5	...	118.2	19.5
Professional associates and technicians	143.0	53.1	38.4	26.0	25.5	...	110.3	32.8
Civil and other servants	90.1	34.5	21.1	18.3	16.2	...	66.5	23.6
Service and trade assistants	154.4	41.8	41.2	41.1	30.3	...	101.2	53.2
Qualified workers in agriculture, forestry and fishing	6.0	/	3.0	1.5	/	...	1.5	4.5
Craftsmen and other	215.5	43.6	68.6	60.3	43.0	...	112.8	102.6
Machine operators and assemblers	221.0	42.7	71.7	61.5	45.1	...	115.9	105.1
Basic/manual labourers	108.1	18.7	37.0	29.3	23.2	...	52.8	55.3
Military occupations	15.1	2.1	3.0	3.8	6.3	...	10.4	4.7
Females	982.9	311.8	276.6	223.8	170.7	...	701.2	281.8
Legislators, administrative officials and managers	14.3	4.1	5.5	2.5	2.2	...	12.1	2.1
Professional and art experts	218.0	96.3	49.7	39.9	32.2	...	185.1	33.0
Professional associates and technicians	165.8	53.3	50.8	36.7	25.1	...	125.9	39.9
Civil and other servants	132.9	62.5	27.5	26.4	16.4	...	107.7	25.2
Service and trade assistants	214.5	62.0	59.1	54.6	38.7	...	143.3	71.2
Qualified workers in agriculture, forestry and fishing	2.2	/	1.0	/	/	...	1.2	1.1
Craftsmen and other	51.5	5.0	15.8	17.3	13.5	...	28.1	23.4
Machine operators and assemblers	66.0	2.8	29.1	14.4	19.6	...	32.6	33.4
Basic/manual labourers	116.9	25.3	38.0	31.0	22.7	...	64.7	52.2
Military occupations	/	/	–	/	/	...	/	/

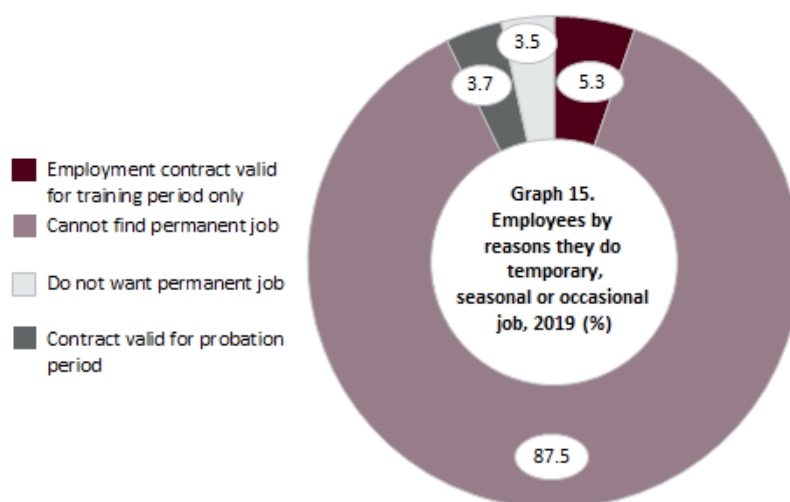
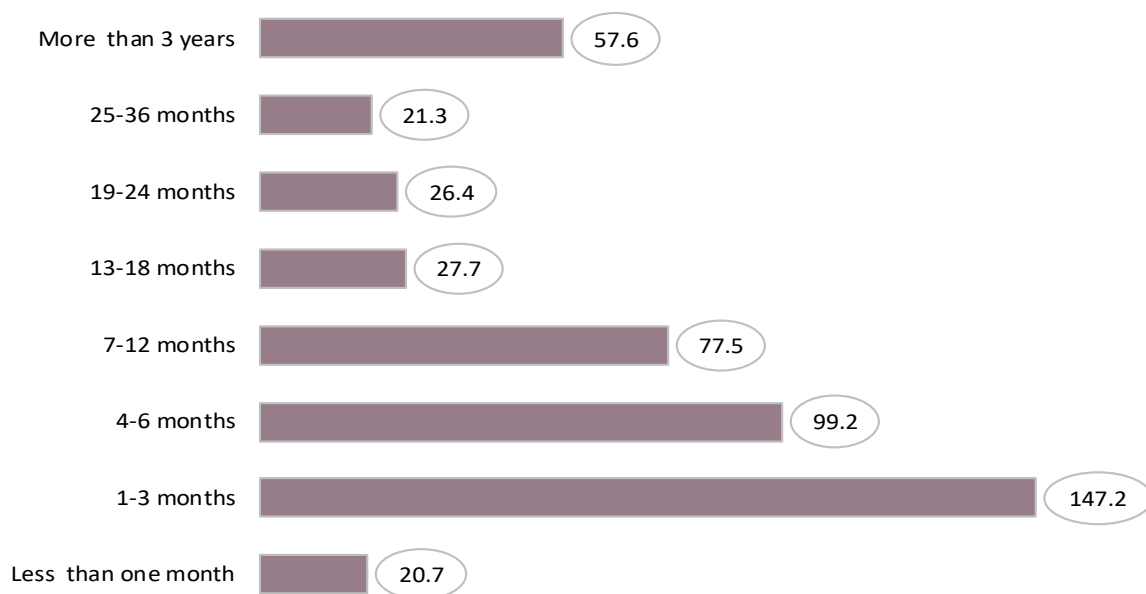
Graph 13. Structure of employees by occupation and sex, 2019 (%)



2.13. Employees by permanency of job, sex, region and type of settlement, 2019 (in thous.)

	Republic of Serbia							
	Total	Srbija – sever		Srbija – jug			Type of settlement	
		Beo-gradski region	Region Vojvo-dine	Region Šuma-dije i Zapadne Srbije	Region Južne i Istočne Srbije	Region Kosovo i Metohija	Urban	Other
Employees aged 15 and over	2097.7	617.5	599.7	493.3	387.2	...	1410.1	687.6
Permanent job	1620.1	502.7	434.2	382.5	300.6	...	1109.5	510.6
Temporary job	408.8	100.4	139.3	95.0	74.1	...	262.5	146.2
Seasonal job	32.2	5.0	13.4	7.4	6.3	...	15.0	17.1
Casual job	36.7	9.3	12.8	8.5	6.1	...	23.0	13.7
Employees of working age (15–64)	2079.3	609.5	593.2	490.9	385.7	...	1394.9	684.4
Permanent job	1609.6	498.0	430.5	381.3	299.7	...	1100.2	509.4
Temporary job	404.2	98.1	137.9	94.3	73.9	...	258.7	145.6
Seasonal job	31.3	4.9	13.0	7.1	6.3	...	14.7	16.6
Casual job	34.2	8.4	11.8	8.2	5.9	...	21.4	12.8
Males								
Employees aged 15 and over	1114.8	305.8	323.0	269.5	216.5	...	709.0	405.8
Permanent job	852.6	248.0	233.3	205.7	165.7	...	550.5	302.1
Temporary job	214.6	48.8	71.9	52.6	41.3	...	132.8	81.9
Seasonal job	22.4	3.7	9.2	4.9	4.7	...	10.8	11.6
Casual job	25.2	5.3	8.7	6.4	4.8	...	15.0	10.2
Employees of working age (15–64)	1103.0	300.5	319.0	268.0	215.6	...	699.4	403.6
Permanent job	846.3	245.1	231.2	204.9	165.2	...	545.1	301.2
Temporary job	211.5	47.2	71.0	52.2	41.1	...	130.1	81.3
Seasonal job	21.8	3.6	8.9	4.7	4.7	...	10.4	11.4
Casual job	23.4	4.6	7.9	6.2	4.6	...	13.7	9.7
Females								
Employees aged 15 and over	982.9	311.8	276.6	223.8	170.7	...	701.2	281.8
Permanent job	767.5	254.8	200.9	176.9	135.0	...	559.0	208.4
Temporary job	194.1	51.6	67.4	42.3	32.8	...	129.8	64.4
Seasonal job	9.8	1	4.2	2.5	1.7	...	4.3	5.5
Casual job	11.5	4.0	4.1	2.1	1.3	...	8.1	3.5
Employees of working age (15–64)	976.3	309.0	274.2	222.9	170.2	...	695.6	280.8
Permanent job	763.2	252.9	199.3	176.4	134.6	...	555.1	208.1
Temporary job	192.8	50.9	66.9	42.2	32.8	...	128.5	64.3
Seasonal job	9.4	1	4.1	2.4	1.6	...	4.2	5.2
Casual job	10.8	3.8	3.9	2.0	1.2	...	7.7	3.2

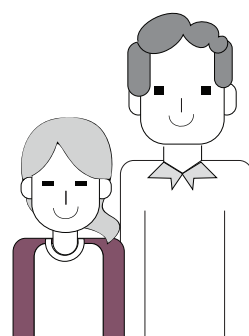
**Graph 14. Employees by total duration of temporary job
(temporary, seasonal or casual jobs), 2019 (in thous.)**



2.14. Employees by kind of ownership, sex, region and type of settlement, 2019 (in thous.)

	Republic of Serbia							
	Total	Srbija – sever		Srbija – jug			Type of settlement	
		Beo-gradski region	Region Vojvo-dine	Region Šuma-dije i Zapadne Srbije	Region Južne i Istočne Srbije	Region Kosovo i Metohija	Urban	Other
Employees aged 15 and over	2097.7	617.5	599.7	493.3	387.2	...	1410.1	687.6
Private ownership, registered	1325.1	374.6	410.9	304.6	235.1	...	858.3	466.8
Private ownership, not registered	24.2	4.8	9.2	5.6	4.6	...	13.6	10.6
State ownership	727.8	230.8	172.6	179.0	145.4	...	524.8	203.0
Other	20.6	7.3	6.9	4.2	2.1	...	13.4	7.2
Employees of working age (15–64)	2079.3	609.5	593.2	490.9	385.7	...	1394.9	684.4
Private ownership, registered	1313.0	369.4	406.6	302.7	234.3	...	848.4	464.6
Private ownership, not registered	22.8	4.5	8.6	5.4	4.3	...	12.7	10.1
State ownership	723.7	228.4	171.5	178.7	145.0	...	521.0	202.7
Other	19.9	7.1	6.5	4.2	2.1	...	12.9	7.0
Males								
Employees aged 15 and over	1114.8	305.8	323.0	269.5	216.5	...	709.0	405.8
Private ownership, registered	744.0	197.9	238.6	173.9	133.6	...	462.8	281.2
Private ownership, not registered	12.9	1.8	4.7	3.6	2.7	...	5.4	7.5
State ownership	344.6	101.9	74.7	89.3	78.7	...	232.3	112.4
Other	13.4	4.2	5.1	2.6	1.5	...	8.6	4.8
Employees of working age (15–64)	1103.0	300.5	319.0	268.0	215.6	...	699.4	403.6
Private ownership, registered	734.9	193.9	235.4	172.6	133.0	...	455.5	279.4
Private ownership, not registered	12.6	1.7	4.6	3.6	2.7	...	5.3	7.3
State ownership	342.4	100.8	74.1	89.1	78.4	...	230.3	112.1
Other	13.0	4.2	4.8	2.6	1.4	...	8.3	4.7
Females								
Employees aged 15 and over	982.9	311.8	276.6	223.8	170.7	...	701.2	281.8
Private ownership, registered	581.2	176.7	172.3	130.7	101.5	...	395.6	185.6
Private ownership, not registered	11.4	3.1	4.5	2.0	1.8	...	8.2	3.2
State ownership	383.2	128.9	97.9	89.6	66.7	...	292.6	90.6
Other	7.2	3.1	1.8	1.6	/	...	4.8	2.4
Employees of working age (15–64)	976.3	309.0	274.2	222.9	170.2	...	695.6	280.8
Private ownership, registered	578.0	175.5	171.2	130.1	101.3	...	392.9	185.1
Private ownership, not registered	10.2	2.9	4.0	1.8	1.6	...	7.4	2.7
State ownership	381.2	127.7	97.4	89.5	66.6	...	290.7	90.6
Other	6.9	3.0	1.7	1.6	/	...	4.5	2.3

3



Unemployed

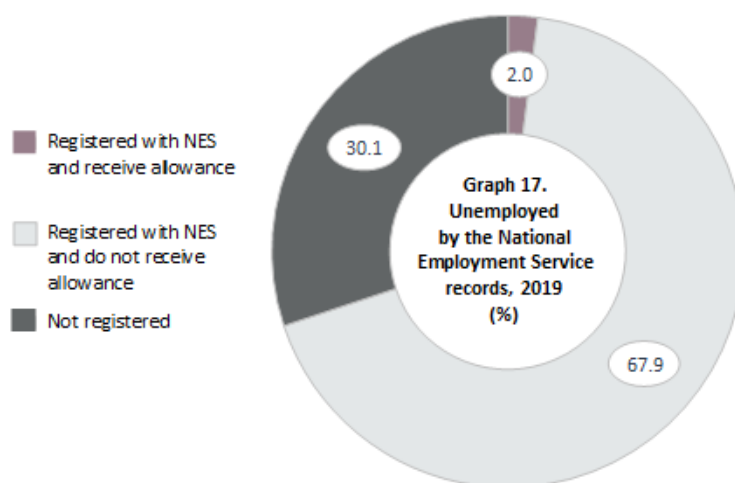
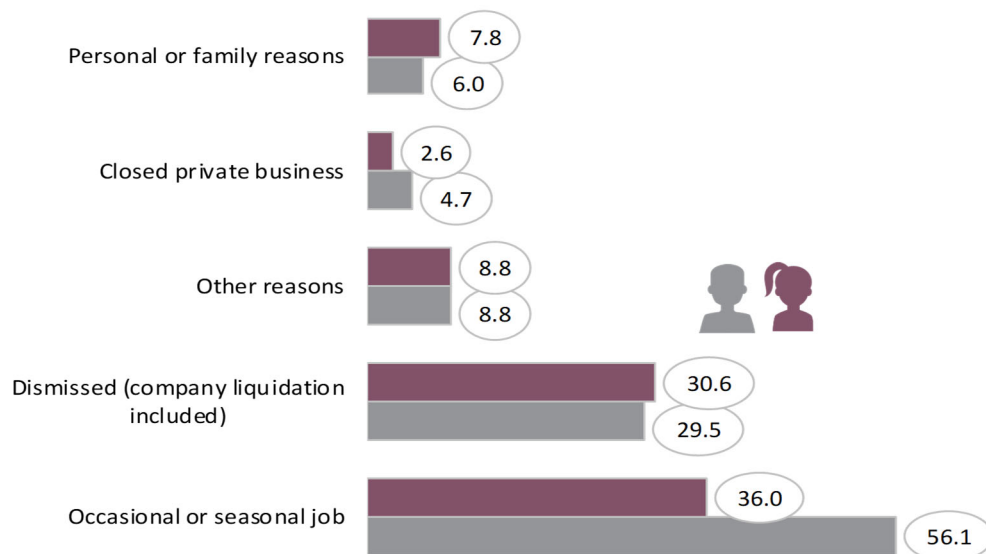
3.1. Unemployed by age groups, sex, region and type of settlement, 2019 (in thous.)

	Republic of Serbia							
	Total	Srbija – sever		Srbija – jug			Type of settlement	
		Beo-gradski region	Region Vojvo-dine	Region Šumadije i Zapadne Srbije	Region Južne i Istočne Srbije	Region Kosovo i Metohija	Urban	Other
Total	335.9	66.4	76.3	106.0	87.2	...	220.0	115.9
15–24 years	58.3	9.8	14.6	19.5	14.4	...	30.2	28.1
25–34	100.4	19.9	19.2	32.3	29.0	...	67.1	33.3
35–44	86.4	18.4	20.5	25.3	22.2	...	61.4	25.0
45–54	54.6	10.9	12.0	18.9	12.8	...	34.7	20.0
55–64	34.9	6.9	9.4	10.1	8.6	...	25.5	9.4
64 +	1.2	/	/	–	/	...	1.1	/
Male	176.2	30.4	41.7	56.5	47.6	...	114.3	61.9
15–24 years	34.8	5.3	8.6	11.7	9.3	...	18.6	16.2
25–34	52.1	8.5	10.0	17.0	16.5	...	35.2	16.9
35–44	41.9	7.8	10.1	13.4	10.6	...	29.2	12.7
45–54	26.7	4.9	6.6	8.7	6.6	...	16.6	10.1
55–64	19.9	3.6	6.0	5.8	4.5	...	14.0	5.9
64 +	/	/	/	-	/	...	/	/
Female	159.7	36.0	34.6	49.5	39.6	...	105.7	54.0
15–24 years	23.5	4.5	5.9	7.8	5.2	...	11.6	11.9
25–34	48.4	11.4	9.2	15.3	12.5	...	31.9	16.4
35–44	44.5	10.5	10.4	11.9	11.7	...	32.2	12.3
45–54	27.9	6.0	5.5	10.2	6.2	...	18.0	9.8
55–64	15.0	3.3	3.4	4.3	4.0	...	11.5	3.5
64 +	/	/	/	-	-	...	/	-

3.2. Unemployed by educational attainment, sex, region and type of settlement, 2019 (in thous.)

	Republic of Serbia							
	Total	Srbija – sever		Srbija – jug			Type of settlement	
		Beo-gradski region	Region Vojvo-dine	Region Šumadije i Zapadne Srbije	Region Južne i Istočne Srbije	Region Kosovo i Metohija	Urban	Other
Total	335.9	66.4	76.3	106.0	87.2	...	220.0	115.9
No formal education	1.1	-	/	-	/	...	/	/
Low	57.1	6.7	18.3	16.0	16.2	...	29.8	27.2
Medium	208.2	39.4	44.1	70.1	54.6	...	134.4	73.9
High	69.6	20.3	13.2	19.9	16.2	...	55.6	13.9
Males	176.2	30.4	41.7	56.5	47.6	...	114.3	61.9
No formal education	/	-	/	-	/	...	/	/
Low	32.8	3.2	10.5	9.3	9.8	...	16.8	16.0
Medium	114.4	19.3	26.1	39.3	29.7	...	73.8	40.6
High	28.4	7.8	4.9	7.9	7.9	...	23.6	4.9
Females	159.7	36.0	34.6	49.5	39.6	...	105.7	54.0
No formal education	/	-	/	-	-	...	/	/
Low	24.2	3.4	7.7	6.6	6.4	...	13.0	11.2
Medium	93.8	20.1	18.0	30.9	24.9	...	60.5	33.3
High	41.1	12.5	8.3	12.0	8.3	...	32.1	9.1

Graph 16. Five main reasons for ceased job for unemployed that stopped working in the previous eight years, 2019 (in thous.)



3.3. Unemployed by duration of job searching, sex, region and type of settlement, 2019 (in thous.)

	Republic of Serbia							
	Total	Srbija – sever		Srbija – jug			Type of settlement	
		Beo-gradski region	Region Vojvo-dine	Region Šuma-dije i Zapadne Srbije	Region Južne i Istočne Srbije	Region Kosovo i Metohija	Urban	Other
Total	335.9	66.4	76.3	106.0	87.2	...	220.0	115.9
Seek job for less than 12 months	140.1	30.0	42.3	34.8	33.0	...	91.3	48.8
Seek job from 12 to 24 months	55.4	11.7	12.3	16.1	15.3	...	37.4	18.0
Seek job from 2 to 6 years	78.9	15.6	12.2	27.9	23.3	...	53.1	25.9
Seek job for more than 7 years	61.5	9.1	9.5	27.3	15.6	...	38.3	23.2
Male	176.2	30.4	41.7	56.5	47.6	...	114.3	61.9
Seek job for less than 12 months	72.4	14.1	23.2	17.9	17.3	...	47.3	25.1
Seek job from 12 to 24 months	27.3	4.6	5.6	8.8	8.4	...	18.3	9.0
Seek job from 2 to 6 years	43.5	7.1	6.7	15.5	14.2	...	29.5	14.0
Seek job for more than 7 years	33.0	4.6	6.3	14.4	7.8	...	19.3	13.7
Female	159.7	36.0	34.6	49.5	39.6	...	105.7	54.0
Seek job for less than 12 months	67.7	15.9	19.1	16.9	15.7	...	44.0	23.7
Seek job from 12 to 24 months	28.0	7.1	6.7	7.4	6.9	...	19.1	9.0
Seek job from 2 to 6 years	35.5	8.5	5.5	12.4	9.1	...	23.6	11.9
Seek job for more than 7 years	28.5	4.6	3.2	12.8	7.8	...	19.0	9.5

3.4. Unemployed by previous work experience, type of job sought, sex, region and type of settlement, 2019 (in thous.)

	Republic of Serbia							
	Total	Srbija – sever		Srbija – jug			Type of settlement	
		Beo-gradski region	Region Vojvo-dine	Region Šuma-dije i Zapadne Srbije	Region Južne i Istočne Srbije	Region Kosovo i Metohija	Urban	Other
Total	335.9	66.4	76.3	106.0	87.2	...	220.0	115.9
By previous work experience								
Had previous work experience	244.7	52.9	60.2	71.4	60.2	...	166.8	77.9
No previous work experience	91.2	13.5	16.1	34.7	27.0	...	53.2	38.0
Seek job to work as self-employed								
Seek job to work as self-employed	4.6	1.4	1.5	/	/	...	4.2	/
Seek job to work as employees	331.3	65.0	74.8	105.2	86.3	...	215.8	115.5
Male	176.2	30.4	41.7	56.5	47.6	...	114.3	61.9
By previous work experience								
Had previous work experience	131.5	24.8	33.6	40.0	33.1	...	88.5	43.0
No previous work experience	44.7	5.6	8.1	16.6	14.5	...	25.9	18.9
Seek job to work as self-employed								
Seek job to work as self-employed	2.9	1.1	/	/	/	...	2.6	/
Seek job to work as employees	173.3	29.2	41.0	56.1	47.0	...	111.7	61.6
Female	159.7	36.0	34.6	49.5	39.6	...	105.7	54.0
By previous work experience								
Had previous work experience	113.2	28.1	26.6	31.4	27.1	...	78.3	34.9
No previous work experience	46.5	7.9	8.0	18.1	12.5	...	27.4	19.1
Seek job to work as self-employed								
Seek job to work as self-employed	1.7	/	/	/	/	...	1.6	/
Seek job to work as employees	158.0	35.7	33.8	49.1	39.4	...	104.1	53.9

3.5. Unemployed by registration with National Employment Service, by sex, region and type of settlement, 2019 (in thous.)

	Republic of Serbia							
	Total	Srbija – sever		Srbija – jug			Type of settlement	
		Beo-gradski region	Region Vojvo-dine	Region Šuma-dije i Zapadne Srbije	Region Južne i Istočne Srbije	Region Kosovo i Metohija	Urban	Other
Total	335.9	66.4	76.3	106.0	87.2	...	220.0	115.9
According to NES records								
Registered with NES and receive allowance	6.8	1.1	1.9	2.8	1.1	...	5.1	1.8
Registered with NES and do not receive allowance	227.9	37.3	46.3	80.7	63.6	...	147.7	80.3
Not registered	101.1	28.0	28.0	22.6	22.6	...	67.2	33.9
Male	176.2	30.4	41.7	56.5	47.6	...	114.3	61.9
According to NES records								
Registered with NES and receive allowance	4.4	/	1.5	1.8	/	...	3.0	1.4
Registered with NES and do not receive allowance	113.2	14.3	23.9	42.2	32.8	...	72.8	40.4
Not registered	58.6	15.5	16.4	12.6	14.1	...	38.6	20.0
Female	159.7	36.0	34.6	49.5	39.6	...	105.7	54.0
According to NES records								
Registered with NES and receive allowance	2.4	/	/	1.0	/	...	2.1	/
Registered with NES and do not receive allowance	114.8	23.0	22.4	38.5	30.8	...	74.9	39.9
Not registered	42.5	12.4	11.7	10.0	8.4	...	28.7	13.8

4



Inactive

4.1. Inactive by age groups, sex, region and type of settlement, 2019 (in thous.)

	Republic of Serbia							
	Total	Srbija – sever		Srbija – jug			Type of settlement	
		Beo-gradski region	Region Vojvo-dine	Region Šumadije i Zapadne Srbije	Region Južne i Istočne Srbije	Region Kosovo i Metohija	Urban	Other
Total	2687.0	630.7	741.9	722.3	592.2	...	1655.7	1031.4
15–24 years	503.9	117.4	128.4	147.1	111.0	...	325.7	178.2
25–34	164.7	37.9	49.3	44.1	33.3	...	97.2	67.5
35–44	128.9	29.8	37.3	32.3	29.5	...	77.2	51.7
45–54	175.2	34.8	55.1	44.0	41.3	...	96.2	79.0
55–64	463.2	103.6	135.7	123.8	100.1	...	285.2	178.1
65 +	1251.2	307.2	336.1	330.9	277.0	...	774.3	476.8
Males	1065.2	249.4	287.2	288.2	240.4	...	662.9	402.3
15–24 years	235.3	56.8	60.4	67.6	50.5	...	154.6	80.7
25–34	55.3	13.1	17.0	14.7	10.4	...	36.0	19.3
35–44	42.5	11.3	10.8	10.3	10.1	...	26.7	15.9
45–54	64.0	12.9	18.7	16.7	15.7	...	37.6	26.4
55–64	166.8	35.4	48.5	44.0	39.0	...	101.1	65.8
65 +	501.3	119.8	131.9	134.9	114.6	...	307.0	194.3
Females	1621.8	381.3	454.7	434.0	351.8	...	992.8	629.1
15–24 years	268.6	60.6	68.0	79.5	60.5	...	171.1	97.5
25–34	109.4	24.9	32.3	29.4	22.9	...	61.2	48.2
35–44	86.4	18.5	26.5	22.0	19.4	...	50.5	35.8
45–54	111.2	21.9	36.4	27.3	25.6	...	58.6	52.6
55–64	296.4	68.2	87.3	79.9	61.1	...	184.1	112.3
65 +	749.8	187.3	204.1	196.0	162.3	...	467.3	282.5

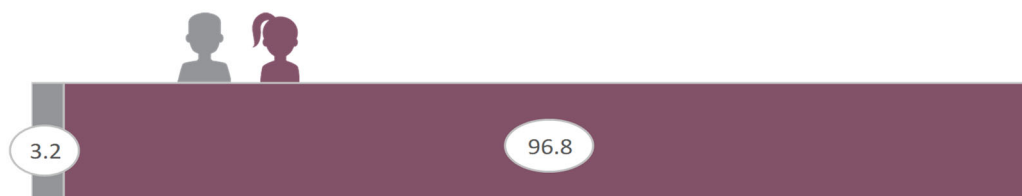
4.2. Inactive by educational attainment, sex, region and type of settlement, 2019 (in thous.)

	Republic of Serbia							
	Total	Srbija – sever		Srbija – jug			Type of settlement	
		Beo-gradski region	Region Vojvo-dine	Region Šumadije i Zapadne Srbije	Region Južne i Istočne Srbije	Region Kosovo i Metohija	Urban	Other
Total	2687.0	630.7	741.9	722.3	592.2	...	1655.7	1031.4
No formal education	71.6	7.2	21.6	20.2	22.7	...	24.2	47.4
Low	1065.7	167.6	305.7	317.9	274.6	...	508.1	557.6
Medium	1221.3	323.3	342.2	316.4	239.4	...	843.2	378.2
High	328.4	132.7	72.4	67.8	55.6	...	280.2	48.3
Males	1065.2	249.4	287.2	288.2	240.4	...	662.9	402.3
No formal education	14.3	1.3	5.6	3.0	4.4	...	4.7	9.5
Low	364.0	54.9	99.2	108.6	101.2	...	165.9	198.2
Medium	534.6	133.9	149.3	144.3	107.1	...	361.6	172.9
High	152.4	59.3	33.1	32.4	27.6	...	130.7	21.7
Females	1621.8	381.3	454.7	434.0	351.8	...	992.8	629.1
No formal education	57.3	5.9	16.1	17.2	18.2	...	19.5	37.9
Low	701.7	112.6	206.4	209.3	173.3	...	342.3	359.4
Medium	686.8	189.4	192.9	172.2	132.3	...	481.5	205.2
High	176.1	73.4	39.3	35.4	28.0	...	149.5	26.6

4.3. Inactive by possibilities to get employed, sex and region, 2019 (in thous.)

	Republic of Serbia							
	Total	Sex		Srbija – sever		Srbija – jug		
		Male	Female	Beo-gradski region	Region Vojvo-dine	Region Šuma-dije i Zapadne Srbije	Region Južne i Istočne Srbije	Region Kosovo i Metohija
Inactive	2687.0	1065.2	1621.8	630.7	741.9	722.3	592.2	...
By possibilities to get employed								
Desire and able to work	202.1	94.2	108.0	46.3	55.1	56.9	43.8	...
Desire but cannot work due to:	114.7	38.2	76.5	32.2	36.9	22.9	22.6	...
Schooling or training	24.1	11.9	12.2	8.7	6.9	2.5	6.0	...
Personal or family reasons	41.9	4.5	37.4	10.2	13.3	11.0	7.3	...
Own illness	27.4	13.0	14.5	7.8	9.4	4.9	5.3	...
Other reasons	21.2	8.8	12.4	5.4	7.4	4.6	3.9	...
Do not want to work due to personal reasons	1825.5	725.9	1099.6	421.1	509.2	493.1	402.0	...
Expecting to resume previous job (temporarily dismissed)	1.3	/	/	/	/	/	/	...
Illness or disability	320.4	142.8	177.6	62.2	94.5	92.2	71.4	...
Care of children or adult disabled persons	61.0	1.9	59.1	11.0	21.6	15.1	13.3	...
Other personal or family reasons	107.5	16.5	90.9	25.6	33.0	28.9	19.9	...
Schooling or training	456.1	215.2	240.9	108.3	113.1	136.6	98.1	...
Retired	754.4	308.7	445.7	194.0	210.3	185.1	165.0	...
Discouraged in possible finding job	61.2	17.6	43.6	8.7	18.1	19.1	15.4	...
Other reasons	63.6	22.3	41.3	10.8	18.3	15.8	18.6	...
Inactive persons aged 75 and over	544.7	206.9	337.8	131.1	140.6	149.2	123.8	...

Graph 18. Inactive not seeking employment because they take care of children or of adult persons with disability, by sex, 2019 (%)



4.4. Inactive by previous work experience, income sources, sex and region, 2019 (in thous.)

	Republic of Serbia							
	Total	Sex		Srbija – sever		Srbija – jug		
		Male	Female	Beo-gradski region	Region Vojvo-dine	Region Šuma-dije i Zapadne Srbije	Region Južne i Istočne Srbije	Region Kosovo i Metohija
Total	2687.0	1065.2	1621.8	630.7	741.9	722.3	592.2	...
By previous work experience								
Had previous work experience	1888.5	791.3	1097.3	468.7	526.8	482.9	410.2	...
No work experience	798.5	273.9	524.6	162.0	215.1	239.4	182.0	...
By main income sources								
Salary/pension of spouse/parent/other household members	995.6	346.8	648.8	219.9	274.5	281.6	219.6	...
Support from other relatives/friends	35.1	14.0	21.1	6.8	10.6	9.4	8.4	...
Own pension entitlement	1467.4	606.3	861.1	374.7	390.8	382.2	319.7	...
Unemployment insurance	10.4	7.1	3.3	1.2	3.1	3.4	2.7	...
Student grant/student loan	3.4	1.8	1.5	/	1.0	/	/	...
Casual jobs/small-range agricultural production	38.1	26.9	11.2	4.9	11.2	11.8	10.2	...
Welfare	97.1	41.0	56.1	12.1	38.9	22.3	23.9	...
Parent allowance	3.4	/	2.5	1.3	/	1.6	/	...
Receipts from rents/interest/dividend	5.9	3.5	2.3	1.5	2.8	1.1	/	...
Personal savings	12.8	8.2	4.6	4.4	2.2	3.1	3.1	...
Credits or borrowings	/	/	-	-	-	/	-	...
Aid from humanitarian or religious organizations	/	-	/	-	/	-	-	...
Other	17.6	8.6	9.1	3.1	6.3	5.2	3.0	...

4.5. Part-time underemployed and potential additional labour force, 15-74 years, 2019 (in thous.)

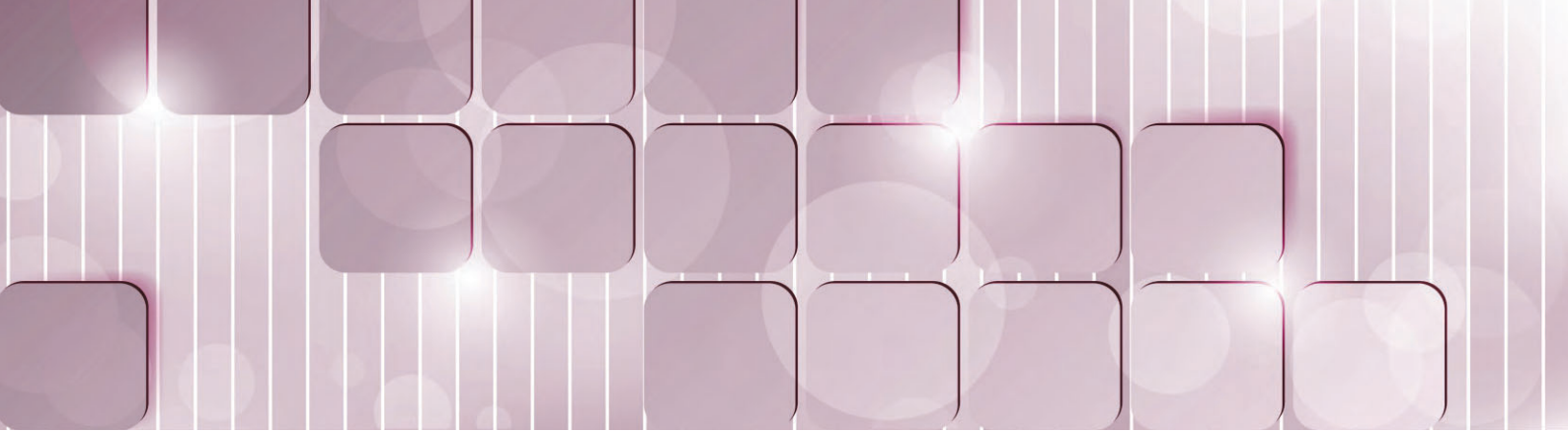
	Republic of Serbia							
	Total	Sex		Srbija – sever		Srbija – jug		
		Male	Female	Beo-gradski region	Region Vojvodine	Region Šuma-dije i Zapadne Srbije	Region Južne i Istočne Srbije	Region Kosovo i Metohija
Total	571.2	289.6	281.5	126.7	157.9	158.8	127.8	...
Part-time underemployed¹	356.2	188.9	167.2	76.5	98.5	100.1	81.1	...
Potential additional labour force²	215.0	100.7	114.3	50.2	59.4	58.7	46.7	...
Seeking work but not immediately available ³	15.5	7.7	7.8	4.5	5.2	2.8	3.1	...
Available to work but not seeking ⁴	199.5	93.0	106.5	45.7	54.2	56.0	43.6	...
Out of which:								
Discouraged persons	47.1	22.6	24.5	7.9	13.1	14.0	12.2	...

¹ Includes persons who work less than full time and wish and are able to work more hours.

² Includes inactive persons who are in some manner connected to the labour market.

³ Includes the following categories: persons who seek job, as well as persons who have already found job, but cannot start working within two weeks ; persons who exclusively seek job in a passive manner (waiting for a call from the National Employment Service, results of work competition or job application); persons who have found job where they have to start working within the deadline longer than three months.

⁴ Includes persons who although did not seek job wish and can start working within two weeks. This category includes discouraged who have lost hope in the possibility of finding job.



Methodological explanations

METHODOLOGICAL EXPLANATIONS

Labour Force Survey is a survey envisaged to collect the data on the main characteristics of labour force, based on which we estimate the total labour force in the country. The principal objective of the study is to provide for the data on three main, mutually exclusive and independent contingents of population: employed, unemployed and inactive persons. The collected data are used to measure and to assess the economic and social trends in the Republic of Serbia.

The survey results are given in aggregated form and in this way, pursuant the Official Statistics Law (Official gazette of RS, No 104/09), the confidentiality of individual data on households and persons is fully ensured.

Unit of interview

Unit of interview is any member of random selected household. The basic socio-demographic data were collected for all members of the selected households, however for the working activity we surveyed only persons aged 15 and over.

Period of observation

Starting from 2015, LFS is envisaged to be implemented as a continuous survey. Each week in a year is regarded as the observed, i.e. reference week. The period of interview is anticipated to last two weeks after the referent week. For each household in the sample the referent week is specified. As one household appears four times in the sample, the interval between two successive appearances in the sample, i.e. interviews, cannot be shorter than three months.

The period of observation for the first quarter included 13 referent weeks and lasted from 31 December 2018 to 31 March 2019, and the period of interviews extended from 7 January 2019 to 7 April 2019.

For the second quarter the period of observation included 13 referent weeks – from 1 April 2019 to 30 June 2019. The period of surveying extended from 8 April 2019 to 7 July 2019.

For the third quarter the period of observation included 13 referent weeks – from 1 July 2019 to 29 September 2019, while the period of interviews extended from 8 July 2019 to 6 October 2019.

For the fourth quarter the period of observation included 13 referent weeks – from 30 September 2019 to 29 December 2019, while the period of interviews extended from 7 October 2019 to 5 January 2020.

For the purpose of Labour Force Survey, **week** is defined as a seven-day period of time, extending from Monday to Sunday inclusive.

Definitions

In preparing the methodology for the Survey we used the definitions and recommendations published in the methodological papers of Eurostat: Council Regulation (EC) No 577/98, Regulation (EC) No 1991/2002, Council Regulation (EC) No 377/2008 and 2257/2003 of the European Parliament and of the Council, Commission Regulation (EC) No 1897/2000, and other.

Under the term **household** we anticipate: **a)** any family or other community of persons who declare to live together and jointly spend their income for basic living support (costs of housing, food, etc.), regardless the fact whether in the time of interview all the members appear in the place where the household is situated; **b)** every person who lives on his / her own (single-person household) and is not member of any other household in some other place, a person living in a separate or divided dwelling, or as a tenant, regardless whether he/she lives in the same room with another tenant or with the members of the lessor's household; however this person does not spend income jointly with them but only pays for the housing.

Employed are the persons that in the week observed at least for an hour did some work for compensating (in money or in kind), as well as the persons with job (i.e. employed persons) who in the respective week were absent from work. Apart from the persons who contracted employment and work with enterprises, institutions or other organizations or are active within private unincorporated enterprises, here included are individual farmers, unpaid family workers/supporting household members, as well as the persons who found and made agreement (verbally or in written) on casual job conduct without contracting employment, and to whom the subject jobs were the only source of subsistence. Therefore, the Survey does not relate to the formal employment status of the surveyed persons, but the working/employment status is determined based on the real activity that interviewed persons practiced in the respective week.

Pursuant to the Classification of occupational status of employed persons, the following categories are defined: self-employed, employees and unpaid family workers.

Self-employed are the persons who work as sole proprietors of enterprises, institutions, private shops or agricultural holdings, as well as the persons who maintain individual professional practice or some other activity for their own account.

Employees are the persons who work with their employers in any ownership sector, either according to formal contract of employment or based on verbal agreement. As employees we assume household members that render their support in running family business and who are paid for their work.

Unpaid family workers (supporting household members) are the persons who provide support to another family member in running family business or agricultural holding, however receive no remuneration for this.

Unemployed persons are the persons who in the respective week did no work for remuneration, who undertook active steps to find a job during the four weeks preceding the referent week, and who were able to start working within two-week time after the referent week. Unemployed are also the persons who undertook no active steps to find a job during the previous four weeks, since they had already found a job and were about to start working after the referent week, however within the next three months latest.

Active population (labour force) includes all employed and unemployed persons.

Inactive population consists of the population aged 15 and over who were not categorized under employed or unemployed population. Inactive population encompasses students, pensioners, persons doing housework, as well as other persons who, in the respective week, did no work for remuneration, undertook no active steps to find a job, nor were able to start working within two-week time after the respective week.

Potentially active population (potential labour force) includes the persons who take active steps to find job but cannot start working at once, i.e. within two weeks, as well as the persons who can immediately start working but do not take active steps to find job. Here included are also so called 'discouraged persons', who do not undertake steps to find job because they are convinced they cannot find one, although they could start working immediately in the case a job was offered.

Subjective employment status presents the employment status of a surveyed person according to his/her own opinion and not according to his/her actual activity in the week observed.

Activity rate presents the percentage share of active population in the total population aged 15 and over.

Employment rate presents the percentage share of employed population in the total population aged 15 and over.

Unemployment rate presents the percentage share of unemployed population in the total number of active population aged 15 and over.

Inactivity rate is the percentage share of inactive population in the total population aged 15 and over.

Informal employment rate represents the percentage share of persons working without formal contract in the total number of employment. This category includes the employed in unregistered companies, the employed in registered companies but without formal contract and without paying social and pension contributions, as well as unpaid family workers

NEET rate represents share of persons aged 15-24 years, without employment, that don't attend education or training in total population of that age.

Classifications

For coding and processing the data collected by this survey, the following classifications were used:

1. **Classification of activities of the European Union (NACE, rev. 2)**, which is comparable to the UN classification of activities, (*ISIC – rev. 4*);
2. **International standard Classification of occupations, ISCO – 08**;
3. **International Standard Clasficiation of education ISCED – 2011**;
4. **Classification of fields of education(ISCED-F – 2013)**, which complements the *International Standard Classification of education ISCED-2011*
5. **International classification of status in employment ISCE-93**

Sample design

Target population - Households and persons referring to the "usual population" that reside in the territory of the Republic of Serbia without the Region of Kosovo and Metohia. Excluded are persons in collective households (students' and pupils' dormitories, homes for children and youth with disabilities, homes for socially vulnerable children, homes for pensioners, retirement nursing homes care , homes for adult disabled persons, monasteries.

Type of sample – Two-stage, stratified sampling approach. The first stage units are enumeration areas and the second stage units are households.

Stratification – Enumeration areas, as primary sampling units, are stratified by the type of settlement (urban and other) and by territory at the NUTS 3 level (25 areas: Beogradska, Zapadnobačka, Južnobanatska, Južnobačka, Severnobanatska, Severnobačka, Srednjobanatska, Sremska, Zlatiborska, Kolubarska, Mačvanska, Moravička, Pomoravska, Rasinska, Raška, Šumadijska, Borska, Braničevska, Zaječarska, Jablanička, Nišavska, Pirotka, Podunavska, Pčinjska and Toplička oblast).

Sampling frame – The 2011 Serbian Population Census frame was used for the selection of the enumeration areas and households. It was formed by excluding all enumeration areas with 19 or less households. In this way frame was reduced by about 1.5%.

Sample size – The target sample size is 76 960 households in 7696 enumeration areas. The sample was increased in 2019 due to the transition to the continuous periodicity of the survey in 2015 and the requirement that sample could be balanced over time and geographical areas.

Sample allocation – Proportional allocation based on the number of persons aged 15 and over, within the type of settlement and territory, was slightly corrected in order to ensure better precision of estimates at the level of area and uniform distribution of the sample in the time. Each subsample allocated for the quarter was randomly and uniformly distributed to 13 weeks for all four quarters. In 2019 52 weeks were observed.

Sample selection – The sample for 2019 consists of 9 independent subsamples, selected according to the same sample scheme. The first stage units (enumeration areas) are selected systematically with probability proportional to the number of population aged 15 and over. Within each stratum enumeration areas were

sorted according to the municipality they belong to and the order number within the municipality. This systematic selection provided high level of implicit geographic stratification and ensured effective sample distribution. The second stage units (households) were selected with equal probabilities (simple random selection).

Rotation scheme – Labour Force Survey is based on the rotating panel design, by which each household participate in the sample for four times. The rotating scheme 2-2-2 was applied. For each quarter four subsamples (rotating groups) are allocated. Each quarter (Q) in the sample is included: one new rotating group, two rotating groups from the previous quarter (Q-1) and one rotating group from Q-3 quarter. Based on the applied rotating scheme, each household and person selected in the sample will be interviewed 4 times within 18 months, i.e. each household and person is in the sample for two consecutive quarters, then for two quarters out of the sample and again for two consecutive quarters in the sample.

Sample realization – The total of 123 647 persons were interviewed, and data on working activity were collected for 110 320 persons, which makes 1.9% of the total number of population aged 15 and over.

Estimation – In order to obtain representative results of the observed general population, sample weights were appended for each household and person in the sample. The major component of the weight is the reciprocal value of the product of the probabilities of selection at every stage in each sampling stratum and represents base weight (design weight). The second component of the weight takes into account the level of non-response for the household. After the completion of fieldwork, response rates were calculated. These were used to adjust the design weights calculated for each enumeration area. The final weight for a person and household is calculated on the basis of the corrected weight for a household by calibration.

Calibration is a procedure which adjusts the sampling weights by factors (calibration factors) so that the obtained estimates agree with known totals. Calibration is a practical approach of incorporating auxiliary information in the phase of estimation, which serves to correct deviations of certain contingents of samples that cannot be avoided during field work. For every quarter, the data obtained on the basis of current demographic estimations are used as auxiliary information.

Requirements which have to be met in calculation of calibration factors are the following: distribution of population according to gender (two groups) by five-year age groups (14 groups), at the level of territory (level NUTS 3) and distribution of household according to number of household members (six groups), at the level of territory, provided that a household and each person from the relevant household have the same final weight, which assures consistent estimates on the basis of households and on the basis of persons.

Estimates of totals, proportions, as well as errors thereof, are calculated for various indicators. In the dissemination phase it is not possible to publish each estimate with its sampling error. In order to provide users to evaluate the precision of the estimate, approximate values of sampling errors have been calculated based on regression model. In methodology of this Survey, users can find on the following link <http://pod2.stat.gov.rs/ObjavljenePublikacije/G2017/pdfE/G20177069.pdf>, approximate values of coefficients of variations for quarterly estimates of totals and annual averages in tables 1 and 2, including instruction for using the tables.

Symbols:

- = No occurrence
- ... = No data available
- / = Small number phenomena – estimate not released
- ¹⁾ = Note/footnote in tables

Communication and Information section

Phone: +38111 2401284

Email: stat@stat.gov.rs

Library

Phone: +38111 2412922, ext. 251

Email: biblioteka@stat.gov.rs

Number of pages: 64