

# STATISTICAL RELEASE

# IN10

Number 20 - Year LXIII, 31.01.2013.

SERB020 IN10 310113

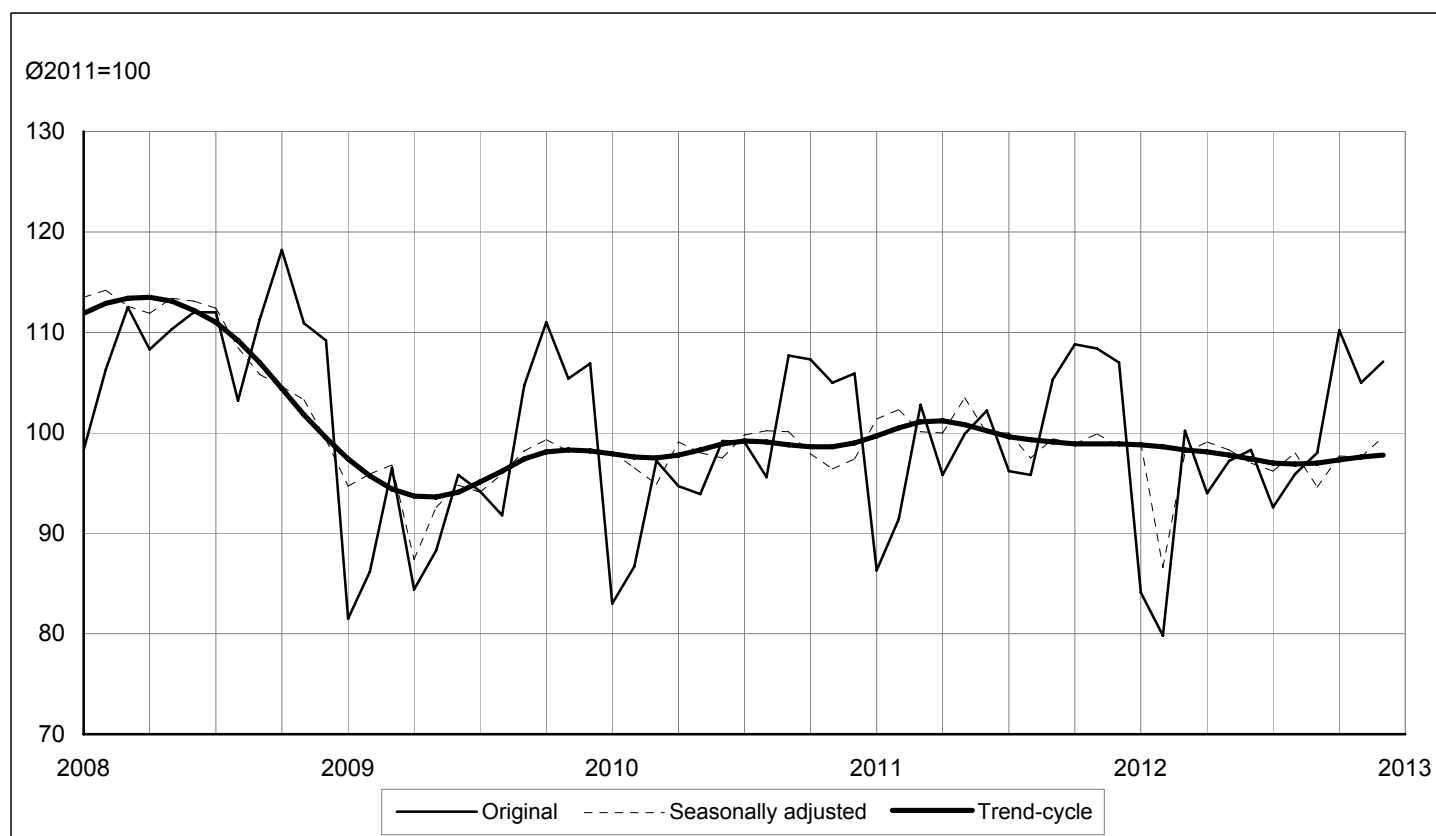
## Industry statistics

### Industrial production indices in the Republic of Serbia, December 2012 - Previous results -

Industrial production in the Republic of Serbia, in December 2012 was by 0,7% greater compared to December 2011 and was by 7,1% greater compared to 2011 average. Industrial production for January - December 2012, compared to the same period last year was by 2,9% lower.

Observed by sections, December 2012, compared to December 2011, in the mining and quarrying section saw a 4,7% fall, while the production in the manufacturing section increased by 1,8%, while the production in the section for electricity, gas, steam and air conditioning supply saw a 1,6% fall.

#### Industrial production, 2008 - 2012



Data in this Communication represent previous results and may undergo certain modifications.

Starting from 1999 the Statistical Office of the Republic of Serbia has not at disposal and may not provide available certain data relative to AP Kosovo and Metohia and therefore these data are not included in the coverage for the

## 1. Industrial production indices, by sections, MIGs and divisions, 2012

Republic of Serbia

	Ø2011=100			XII 2012	I-XII 2012
	XI	XII	I-XII	XII 2011	I-XII 2011
<b>Industry total<sup>1)</sup></b>	<b>105,0</b>	<b>107,1</b>	<b>97,1</b>	<b>100,7</b>	<b>97,1</b>
<b>Energy</b>	<b>106,4</b>	<b>120,6</b>	<b>93,9</b>	<b>103,4</b>	<b>93,9</b>
<b>Intermediate goods, except energy</b>	<b>87,8</b>	<b>81,4</b>	<b>91,4</b>	<b>91,6</b>	<b>91,4</b>
<b>Capital goods</b>	<b>114,4</b>	<b>110,3</b>	<b>103,3</b>	<b>100,7</b>	<b>103,3</b>
<b>Durable consumer goods</b>	<b>115,8</b>	<b>92,6</b>	<b>105,6</b>	<b>78,9</b>	<b>105,6</b>
<b>Non-durable consumer goods</b>	<b>116,7</b>	<b>120,0</b>	<b>103,3</b>	<b>107,0</b>	<b>103,3</b>
<b>Mining and quarrying</b>	<b>108,8</b>	<b>105,2</b>	<b>97,8</b>	<b>95,3</b>	<b>97,8</b>
Mining of coal and lignite	107,2	107,2	93,1	95,1	93,1
Extraction of crude petroleum and natural gas	111,8	116,3	109,6	104,5	109,6
Mining of metal ores	148,6	139,0	121,3	109,8	121,3
Other mining and quarrying	82,5	40,5	91,8	52,1	91,8
<b>Manufacturing</b>	<b>106,1</b>	<b>105,2</b>	<b>98,2</b>	<b>101,8</b>	<b>98,2</b>
Manufacture of food products	111,7	91,4	100,7	88,5	100,7
Manufacture of beverages	83,6	104,8	103,4	100,6	103,4
Manufacture of tobacco products	125,9	108,4	93,3	104,9	93,3
Manufacture of textiles	107,3	100,9	98,1	90,9	98,1
Manufacture of wearing apparel	114,2	118,7	110,4	126,5	110,4
Manufacture of leather and related products	91,8	107,2	87,7	103,1	87,7
Manufacture of wood and of products of wood and cork, except furniture	156,0	94,1	120,0	76,8	120,0
Manufacture of paper and paper products	108,0	102,3	105,2	98,6	105,2
Printing and reproduction of recorded media	106,1	99,4	100,8	82,3	100,8
Manufacture of coke and refined petroleum products	137,4	167,9	95,3	136,4	95,3
Manufacture of chemicals and chemical products	66,7	81,0	81,5	92,8	81,5
Manufacture of basic pharmaceutical products and pharmaceutical preparations	161,6	235,7	112,5	160,8	112,5
Manufacture of rubber and plastic products	120,8	98,9	118,4	118,7	118,4
Manufacture of other non-metallic mineral products	92,5	63,6	93,0	87,2	93,0
Manufacture of basic metals	37,8	36,3	53,3	49,3	53,3
Manufacture of fabricated metal products, except machinery and equipment	122,2	121,5	112,6	111,6	112,6
Manufacture of computer, electronic and optical products	74,6	97,4	98,0	69,9	98,0
Manufacture of electrical equipment	109,9	92,1	99,3	88,6	99,3
Manufacture of machinery and equipment n.e.c.	83,3	95,9	103,8	125,7	103,8
Manufacture of motor vehicles, trailers and semi-trailers	226,1	172,2	116,5	258,2	116,5
Manufacture of other transport equipment	9,1	47,7	80,2	24,3	80,2
Manufacture of furniture	115,1	103,7	103,4	73,1	103,4
Other manufacturing	88,0	99,4	102,3	90,7	102,3
Repair and installation of machinery and equipment	80,7	84,6	89,0	90,7	89,0
<b>Electricity, gas, steam and air conditioning supply</b>	<b>99,8</b>	<b>114,7</b>	<b>92,9</b>	<b>98,4</b>	<b>92,9</b>
Electricity, gas, steam and air conditioning supply	99,8	114,7	92,9	98,4	92,9

<sup>1)</sup> The estimate of the industrial production of small-sized enterprises that are not covered by regular statistical surveys of industry was made for December 2012. The estimate was made on the basis of the sample. If the estimate of industrial production of small-sized enterprises is included, the industrial production index for December 2012/2011 average, for total industrial production stands at 106.6 and for manufacturing 104.6.

## 2. Seasonally adjusted industrial production indices

Republic of Serbia		Ø2011=100											
		I	II	III	IV	V	VI	VII	VIII	IX	X	XI	XII
		<b>Industry total</b>											
2011		101,4	102,3	100,1	100,0	103,5	100,0	100,0	97,5	99,4	98,9	99,9	98,7
2012		99,0	86,6	98,0	99,1	98,3	97,0	96,2	98,0	94,6	97,7	97,6	99,6
		<b>Manufacturing</b>											
2011		104,5	103,2	100,0	99,5	101,6	100,4	102,8	97,2	99,7	98,4	97,3	97,5
2012		97,5	84,9	100,9	102,0	100,6	98,7	96,6	99,3	95,4	98,8	99,0	99,5

### Industrial production indices<sup>1)</sup>

Industrial production index shows the percentage of decrease or increase in the quantities of produced manufactured products (services) on a selected territory. Hence, the index of industrial production presents trends of changes in industry development and the dynamics of its production in short time intervals.

There are two phases in the calculation of the index of production. In the first one, indices for groups and divisions are calculated on the basis of data on quantities, which are collected through the Monthly Survey on Industry, and on the basis of the weight by products (services).

Laspeyre's formula is used for the calculation. The quantities of products in the current and referent period are multiplied by weights of those products then those multiplication products are divided.

$$IFO_o = \frac{\sum q_1 k_0}{\sum q_0 k_0} * 100$$

IFO<sub>o</sub> – index of the physical volume of industrial production for divisions;

q<sub>1</sub> – quantity produced in the current period;

q<sub>0</sub> – quantity produced in the referent period;

k<sub>0</sub> – weights for the product in the referent period.

In the second phase, the index of the physical volume of industrial production for the overall industry, sections, sub-sections and MIGs is calculated on the basis of indices obtained for divisions and on the basis of the weight for divisions, the formula below being used for that purpose:

$$IFO = \frac{\sum I_i W_i}{\sum W_i}$$

IFO – index of the physical volume of industrial production;

I<sub>i</sub> – index of the physical volume of industrial production in a division;

W<sub>i</sub> – weight for the division from the referent period.

<sup>1)</sup>The methodology used to calculate the monthly index of industrial production is available on the website of the Statistical Office of the Republic of Serbia [www.stat.gov.rs](http://www.stat.gov.rs)

### 3. Industrial production indices, by sectors, MIGs and divisions, 2012

AP Vojvodina

	Ø2011=100			XII 2012	I-XII 2012
	XI	XII	I-XII	XII 2011	I-XII 2011
<b>Industry total</b>	<b>119,3</b>	<b>124,8</b>	<b>102,1</b>	<b>113,9</b>	<b>102,1</b>
<b>Energy</b>	<b>124,6</b>	<b>158,3</b>	<b>98,3</b>	<b>120,9</b>	<b>98,3</b>
<b>Intermediate goods, except energy</b>	<b>95,9</b>	<b>96,0</b>	<b>94,8</b>	<b>92,8</b>	<b>94,8</b>
<b>Capital goods</b>	<b>94,7</b>	<b>84,7</b>	<b>105,4</b>	<b>112,2</b>	<b>105,4</b>
<b>Durable consumer goods</b>	<b>55,7</b>	<b>64,8</b>	<b>89,5</b>	<b>58,5</b>	<b>89,5</b>
<b>Non-durable consumer goods</b>	<b>131,3</b>	<b>135,6</b>	<b>104,5</b>	<b>116,5</b>	<b>104,5</b>
<b>Mining and quarrying</b>	<b>108,9</b>	<b>112,3</b>	<b>107,3</b>	<b>105,4</b>	<b>107,3</b>
Mining of coal and lignite	135,2	177,8	74,7	190,8	74,7
Extraction of crude petroleum and natural gas	111,8	116,1	109,4	104,2	109,4
Other mining and quarrying	47,3	13,5	91,1	40,5	91,1
<b>Manufacturing</b>	<b>120,9</b>	<b>125,1</b>	<b>102,0</b>	<b>115,7</b>	<b>102,0</b>
Manufacture of food products	124,1	93,3	102,0	86,2	102,0
Manufacture of beverages	74,5	103,0	100,1	116,3	100,1
Manufacture of tobacco products	111,8	107,5	81,4	118,9	81,4
Manufacture of textiles	116,8	134,0	114,5	128,0	114,5
Manufacture of wearing apparel	136,3	134,4	121,9	182,6	121,9
Manufacture of leather and related products	80,7	97,2	82,0	98,1	82,0
Manufacture of wood and of products of wood and cork, except furniture	118,3	57,3	93,4	61,7	93,4
Manufacture of paper and paper products	123,9	92,8	108,7	76,0	108,7
Printing and reproduction of recorded media	125,1	101,7	98,3	97,8	98,3
Manufacture of coke and refined petroleum products	139,6	172,8	95,8	138,7	95,8
Manufacture of chemicals and chemical products	49,2	90,7	66,1	94,9	66,1
Manufacture of basic pharmaceutical products and pharmaceutical preparations	169,1	247,3	113,4	165,0	113,4
Manufacture of rubber and plastic products	144,9	121,9	155,9	157,3	155,9
Manufacture of other non-metallic mineral products	95,5	57,6	94,4	90,9	94,4
Manufacture of basic metals	94,6	80,1	85,7	86,4	85,7
Manufacture of fabricated metal products, except machinery and equipment	148,8	124,6	124,5	107,7	124,5
Manufacture of computer, electronic and optical products	67,2	99,5	94,8	66,8	94,8
Manufacture of electrical equipment	125,3	145,9	90,7	131,0	90,7
Manufacture of machinery and equipment n.e.c.	52,1	69,0	101,1	218,4	101,1
Manufacture of motor vehicles, trailers and semi-trailers	122,5	102,8	104,6	152,3	104,6
Manufacture of other transport equipment	19,8	19,2	86,1	16,2	86,1
Manufacture of furniture	68,0	82,6	80,0	60,7	80,0
Other manufacturing	98,4	130,4	98,3	96,4	98,3
Repair and installation of machinery and equipment	139,1	133,8	123,9	129,7	123,9
<b>Electricity, gas, steam and air conditioning supply</b>	<b>4,4</b>	<b>142,7</b>	<b>91,0</b>	<b>53,1</b>	<b>91,0</b>
Electricity, gas, steam and air conditioning supply	4,4	142,7	91,0	53,1	91,0

Published and printed by: Statistical Office of the Republic of Serbia, Belgrade, 5, Milana Rakica St  
 Phone: +381-11/2412-922 (operator) • Fax:2411-260 • www.stat.gov.rs

Responsible: Director, Dragan Vukmirovic, PhD

Issued monthly