

# COMMUNICATION

# RS10

Number 373 • Year LVIII, 30.12.2008

Labor Force Survey

SERB 373 RS10 301208

## Labor Force Survey, October 2008

- Preliminary results -

### Introductory notes

Labor Force Survey represents a study survey that most completely considers the labor force status and fluctuations in the labor market.

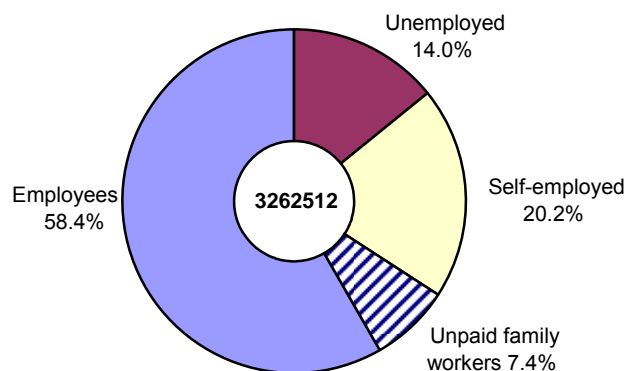
While conducting this survey, the methodological solutions, harmonized with the recommendations and definitions of the International Labor Organization – ILO and EUROSTAT requirements (European Statistical Office) were applied and thereby, the most important source was obtained for the international comparison of data of the Republic of Serbia and other countries in the field of labor statistics. The frame for the sample selection is based on the 2002 Census of population, households and dwellings.

The survey covered about 7000 households of Central Serbia and Vojvodina. The data were collected relative to the demographic features of the whole population. For the population aged 15 and over, the data on their working activity were also collected. The total of 20715 persons were interviewed and for 17827 persons the data regarding their working activity were obtained, which equals 0.3% of the total number of persons aged 15 and over.

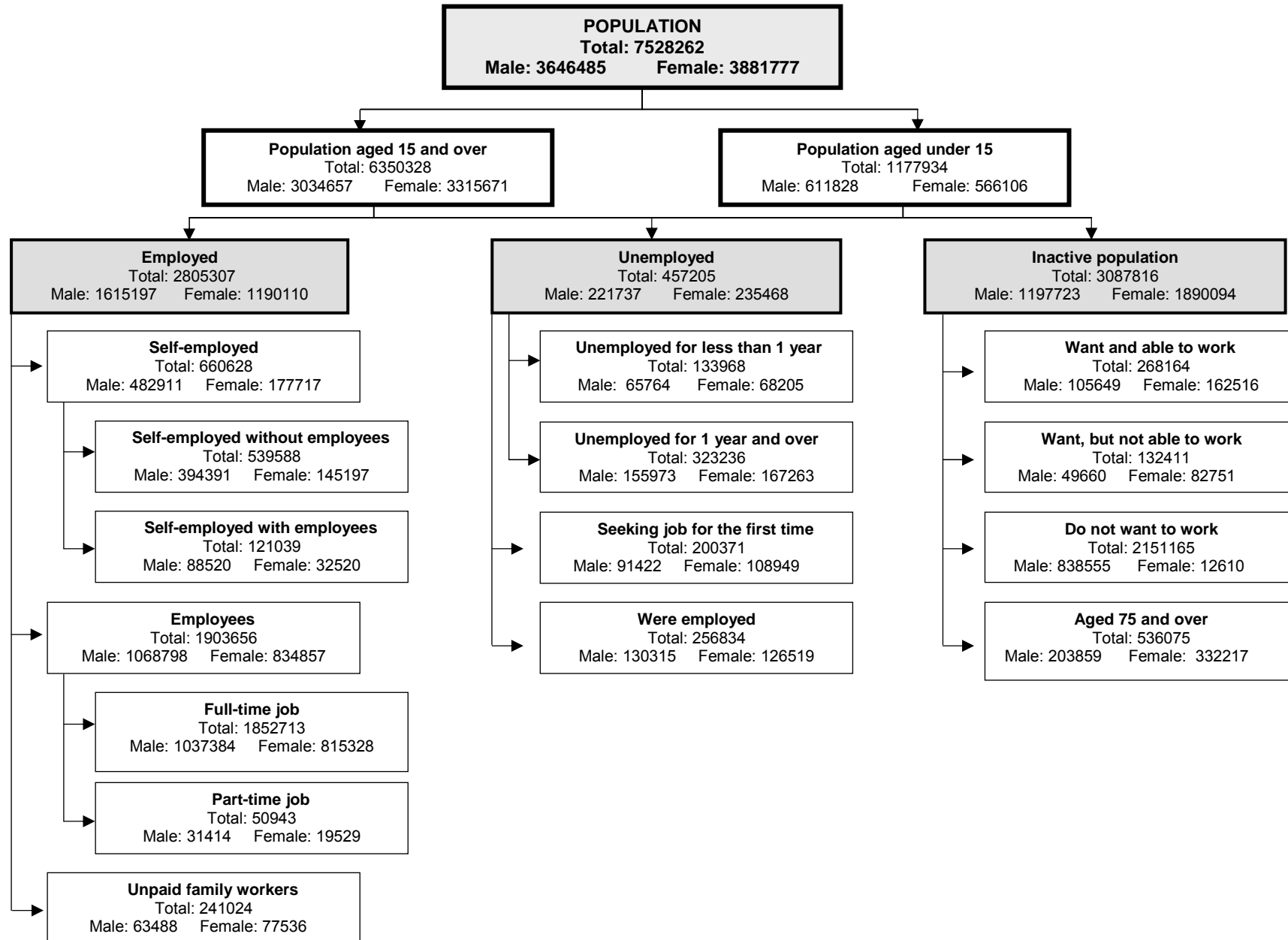
Labor Force Survey was carried out in October 2008 and the observation period was 13-19 October 2008.

### Structure of active population aged 15 and over, October 2008

- Republic of Serbia -



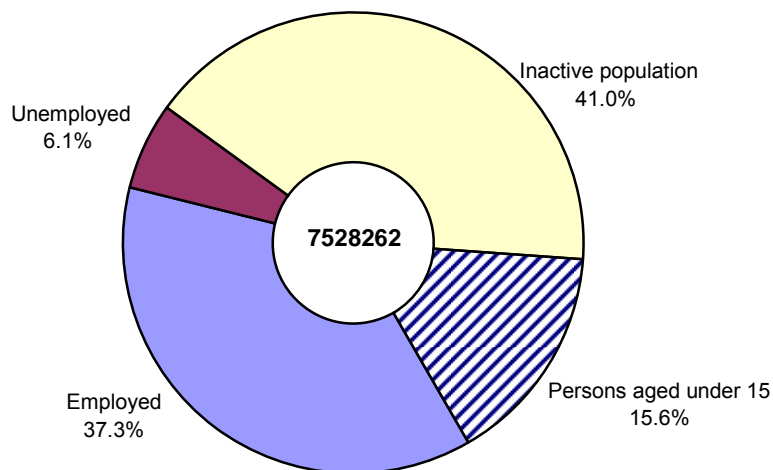
## Review of basic population groups of the Republic of Serbia, October 2008



### 1. Population by activity, sex, region, type of settlement, educational attainment and age, October 2008

	Total	Sex		Region			Type of settlement		Educational attainment				Age groups					
	October 2008	male	female	Central Serbia without Belgrade	Belgrade	Vojvodina	urban	rural	Without educational attainment	low	medium	high	15-24	25-34	35-44	45-54	55-64	65 and over
Population aged 15 and over	6350328	3034656.6	3315671.4	3247787	1408129	1694412	3687881	2662447	239971	2182430	3096621	831307	903857	897734	917723	1152221	1088985	1389809
Active population	3262512	1836934	1425578	1730677	691010	840825	1814876	1447635	30633	775516	1890472	565891	305681	706403	783120	861893	446331	159085
Employed	2805307	1615197	1190110	1491028	592747	721532	1517216	1288091	29196	686236	1575157	514719	191298	569202	700948	772287	412486	159085
Unemployed	457205	221737	235468	239649	98262	119293	297660	159544	1437	89281	315315	51172	114382	137200	82172	89605	33845	-
Inactive population	3087816	1197723	1890094	1517110	717119	853587	1873004	1214812	209338	1406914	1206149	265416	598176	191331	134603	290329	642654	1230724
Population aged under 15	1177934	611828	566106	624512	240253	313169	692192	485742	-	-	-	-	-	-	-	-	-	-
Working age population (15 - 64)	4960519	2448571	2511948	2510835	1099249.9	1350434	2977824	1982695.3	46267	1435921.1	2789480.7	688850	903857	897734.02	917722.6	1152221.2	1088984.6	-
<b>Total</b>	<b>7528262</b>	<b>3646485</b>	<b>3881777</b>	<b>3872299</b>	<b>1648382</b>	<b>2007581</b>	<b>4380073</b>	<b>3148189</b>	<b>510574</b>	<b>5140377</b>	<b>8083713</b>	<b>2228504</b>	<b>2113394</b>	<b>2501871</b>	<b>2618565</b>	<b>3166335</b>	<b>2624300</b>	<b>2938702</b>

**Total population structure, October 2008**  
- Republic of Serbia -



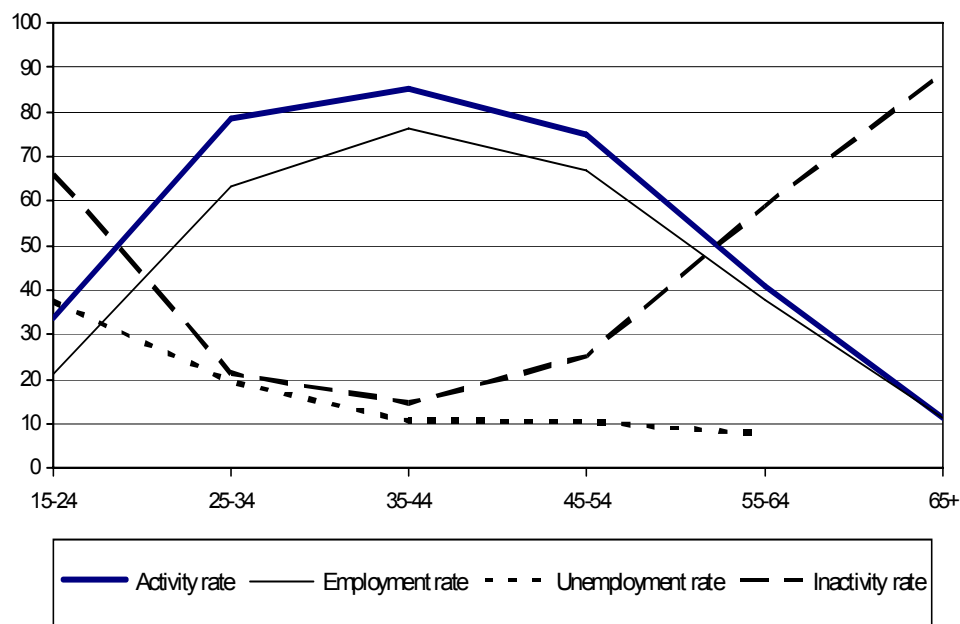
## 2. Structure of population aged 15 and over, by activity, sex, region, type of settlement, educational attainment and age, October 2008

	Total	Sex		Region			Type of settlement		Educational attainment				Age groups					
	October 2008	male	female	Central Serbia without Belgrade	Belgrade	Vojvodina	urban	rural	Without educational attainment	low	medium	high	15-24	25-34	35-44	45-54	55-64	65 and over
<b>Total</b>	<b>6350328</b>	<b>3034657</b>	<b>3315671</b>	<b>3247787</b>	<b>1408129</b>	<b>1694412</b>	<b>3687881</b>	<b>2662447</b>	<b>239971</b>	<b>2182430</b>	<b>3096621</b>	<b>831307</b>	<b>903857</b>	<b>897734</b>	<b>917723</b>	<b>1152221</b>	<b>1088985</b>	<b>1389809</b>
<b>Active population</b>	<b>3262512</b>	<b>1836934</b>	<b>1425578</b>	<b>1730677</b>	<b>691010</b>	<b>840825</b>	<b>1814876</b>	<b>1447635</b>	<b>30633</b>	<b>775516</b>	<b>1890472</b>	<b>565891</b>	<b>305681</b>	<b>706403</b>	<b>783120</b>	<b>861893</b>	<b>446331</b>	<b>159085</b>
Employed	2805307	1615197	1190110	1491028	592747	721532	1517216	1288091	29196	686236	1575157	514719	191298	569202	700948	772287	412486	159085
Of which: agricultural producers and unpaid family workers in agriculture	589240	322512	266728	473442	13526	102273	45812	543428	26147	378988	173973	10132	33047	51793	92344	124806	141253	145997
Unemployed	457205	221737	235468	239649	98262	119293	297660	159544	1437	89281	315315	51172	114382	137200	82172	89605	33845	-
<b>Inactive population</b>	<b>3087816</b>	<b>1197723</b>	<b>1890094</b>	<b>1517110</b>	<b>717119</b>	<b>853587</b>	<b>1873004</b>	<b>1214812</b>	<b>209338</b>	<b>1406914</b>	<b>1206149</b>	<b>265416</b>	<b>598176</b>	<b>191331</b>	<b>134603</b>	<b>290329</b>	<b>642654</b>	<b>1230724</b>
Inactive, want and able to work	268164	105649	162516	137150	54114	76901	163926	104239	539	79963	161023	26639	43093	51045	51537	75958	41291	5241
<b>Inactive, want, but not able to work, due to:</b>	<b>132411</b>	<b>49660</b>	<b>82751</b>	<b>63617</b>	<b>23418</b>	<b>45376</b>	<b>75711</b>	<b>56700</b>	<b>3057</b>	<b>39098</b>	<b>81736</b>	<b>8520</b>	<b>43093</b>	<b>36214</b>	<b>18658</b>	<b>16305</b>	<b>13979</b>	<b>4163</b>
Education or training	28808	13601	15207	14135	6745	7928	18941	9867	-	8285	20102	422	22369	6440	-	-	-	-
Compulsory military service	8173	8173		4141	1221	2812	4718	3454	-	243	7235	695	6771	1402	-	-	-	-
Cannot leave the current job in 2 weeks time	593	-	593	-	297	296	297	296	-	-	593	-	-	-	593	-	-	-
Private and family reasons	45151	2672	42479	25841	4681	14629	23232	21919	566	14231	28223	2130	11408	20867	7944	3526	708	697
Illness or disability	36028	18179	17849	14029	7634	14365	21156	14872	1807	11890	18136	4194	256	4415	5975	11413	10932	3037
Other reasons	13657	7035	6623	5471	2840	5346	7366	6292	684	4448	7446	1079	2289	3090	4146	1366	2339	429
<b>Inactive and do not want to work</b>	<b>2151165</b>	<b>838555</b>	<b>1312610</b>	<b>1034720</b>	<b>509205</b>	<b>607240</b>	<b>1355020</b>	<b>796145</b>	<b>78109</b>	<b>1006467</b>	<b>885223</b>	<b>181365</b>	<b>511990</b>	<b>104072</b>	<b>64408</b>	<b>198066</b>	<b>587384</b>	<b>685245</b>
75 and over	536075	203859	332217	281623	130382	124070	278347	257728	127633	281386	78166	48891	-	-	-	-	-	536075

**3. Activity, employment, unemployment and inactivity rates by sex, region, type of settlement, educational attainment and age,  
October 2008**

	Total		Sex		Region			Type of settlement		Educational attainment				Age groups						
	April 2008	October 2008	male	female	Central Serbia without Belgrade	Belgrade	Vojvodina	urban	rural	Without educational attainment	low	medium	high	15-24	25-34	35-44	45-54	55-64	65 and over	Working age population (15 - 64)
Activity rate	51.5	51.4	60.5	43.0	53.3	49.1	49.6	49.2	54.4	12.8	35.5	61.0	68.1	33.8	78.7	85.3	74.8	41.0	11.4	62.6
Employment rate	44.7	44.2	53.2	35.9	45.9	42.1	42.6	41.1	48.4	12.2	31.4	50.9	61.9	21.2	63.4	76.4	67.0	37.9	11.4	53.3
Unemployment rate	13.3	14.0	12.1	16.5	13.8	14.2	14.2	16.4	11.0	4.7	11.5	16.7	9.0	37.4	19.4	10.5	10.4	7.6	-	14.7
Inactivity rate	48.5	48.6	39.5	57.0	46.7	50.9	50.4	50.8	45.6	87.2	64.5	39.0	31.9	66.2	21.3	14.7	25.2	59.0	88.6	37.4

**Activity, employment, unemployment and inactivity rates of population aged 15 and over, October 2008  
- Republic of Serbia -**



#### 4. Structure of population aged 15 and over by age, sex, region, type of settlement, activity and educational attainment, October 2008

%

	Total	Sex		Region			Type of settlement		Activity				Educational attainment				
	October 2008	male	female	Central Serbia without Belgrade	Belgrade	Vojvodina	urban	rural	active	employed	unemployed	inactive	Without educational attainment	low	medium	high	
15-19 years	6.8	7.4	6.2	6.9	5.6	7.6	6.8	6.8	2.1	1.4	6.9	11.7	1.2	15.1	3.2	-	
20-24	7.4	8.0	6.9	7.1	7.9	7.8	7.7	7.0	7.2	5.5	18.2	7.6	1.0	2.6	12.6	2.6	
25-29	7.4	8.3	6.6	6.8	9.5	6.8	8.4	6.0	10.6	9.4	18.0	4.0	0.8	2.6	10.6	9.8	
30-34	6.7	6.8	6.6	6.6	6.9	6.7	7.3	6.0	11.0	10.8	12.0	2.2	1.4	3.5	8.8	9.0	
35-39	7.0	7.2	6.8	7.4	6.2	6.9	7.0	7.0	11.9	12.2	9.8	1.8	0.6	3.6	9.4	8.6	
40-44	7.5	7.7	7.3	7.5	6.0	8.7	7.2	7.8	12.2	12.8	8.2	2.5	1.6	4.8	9.5	8.7	
45-49	8.4	8.3	8.5	8.2	8.4	8.8	8.8	7.9	12.9	13.3	10.2	3.7	1.8	5.6	9.9	12.4	
50-54	9.7	9.8	9.6	9.9	9.9	9.3	10.0	9.4	13.5	14.2	9.4	5.7	3.3	8.5	10.8	10.7	
55-59	10.1	10.4	9.9	10.0	10.9	9.7	10.5	9.6	10.0	10.7	6.3	10.2	3.2	10.8	9.8	11.4	
60-64	7.0	6.7	7.3	6.9	6.8	7.5	7.1	7.0	3.6	4.0	1.1	10.6	4.3	8.6	5.4	9.6	
65-69	6.6	6.2	6.9	6.8	6.3	6.3	6.0	7.4	2.3	2.6	-	11.1	7.0	10.7	3.6	6.5	
70-74	6.3	5.7	6.9	6.2	6.4	6.4	5.7	7.1	1.5	1.7	-	11.4	16.7	9.4	3.7	4.7	
75 and over	9.0	7.5	10.4	9.7	9.3	7.6	7.6	11.0	1.1	1.3	-	17.4	57.0	14.0	2.6	6.0	
<b>Total</b>																	<b>100%</b>

#### 5. Structure of population aged 15 and over by sex, activity, region, type of settlement and educational attainment, October 2008

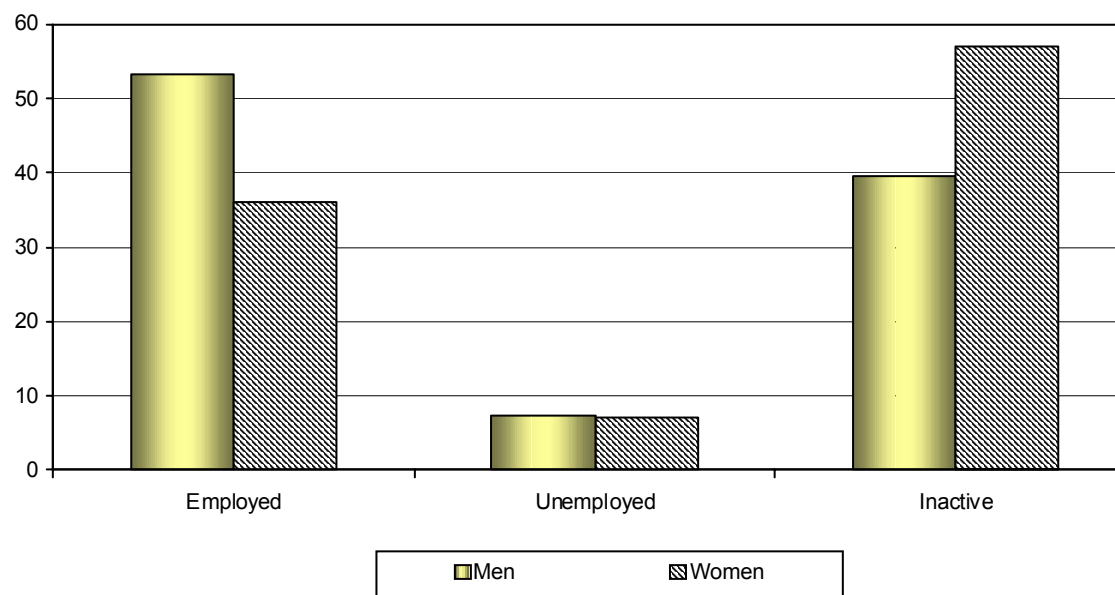
%

	Total	Sex		Region			Type of settlement		Activity			Educational attainment				
	October 2008	male	female	Central Serbia without Belgrade	Belgrade	Vojvodina	urban	rural	employed	unemployed	inactive	Without educational attainment	low	medium	high	
15-24 years	14.2	15.4	13.1	14.0	13.4	15.3	14.5	13.8	6.8	25.0	19.4	2.2	17.7	15.9	2.6	
25-34	14.1	15.1	13.3	13.4	16.5	13.6	15.7	11.9	20.3	30.0	6.2	2.2	6.1	19.5	18.8	
34-44	14.5	14.9	14.0	14.8	12.3	15.5	14.2	14.8	25.0	18.0	4.4	2.3	8.4	18.8	17.4	
45-54	18.1	18.2	18.1	18.1	18.3	18.1	18.8	17.3	27.5	19.6	9.4	5.1	14.1	20.7	23.1	
55-64	17.1	17.1	17.2	16.9	17.7	17.1	17.6	16.6	14.7	7.4	20.8	7.5	19.5	15.2	21.0	
65 and over	21.9	19.3	24.2	22.7	21.9	20.3	19.3	25.5	5.7	-	39.9	80.7	34.2	9.9	17.1	
<b>Total</b>																<b>100%</b>

**6. Structure of population aged 15 and over, by activity, sex, region, type of settlement, educational attainment, age and subjective view of financial situation in the own household, October 2008**

	Total	Sex		Region			Type of settlement		Educational attainment			Age groups						Financial situation in the household					
		October 2008	male	female	Central Serbia without Belgrade	Belgrade	Vojvodina	urban	rural	Without educational attainment	low	medium	high	15-24	25-34	35-44	45-54	55-64	65 and over	Very good	Mainly good	Mainly bad	bad
Employed	44.2	53.2	35.9	45.9	42.1	42.6	41.1	48.4	12.2	31.4	50.9	61.9	21.2	63.4	76.4	67.0	37.9	11.4	53.3	51.4	45.0	35.5	
Unemployed	7.2	7.3	7.1	7.4	7.0	7.0	8.1	6.0	0.6	4.1	10.2	6.2	12.7	15.3	9.0	7.8	3.1	-	1.6	3.2	7.2	11.7	
Inactive	48.6	39.5	57.0	46.7	50.9	50.4	50.8	45.6	87.2	64.5	39.0	31.9	66.2	21.3	14.7	25.2	59.0	88.6	45.2	45.4	47.8	52.8	
<b>Total</b>																							<b>100%</b>

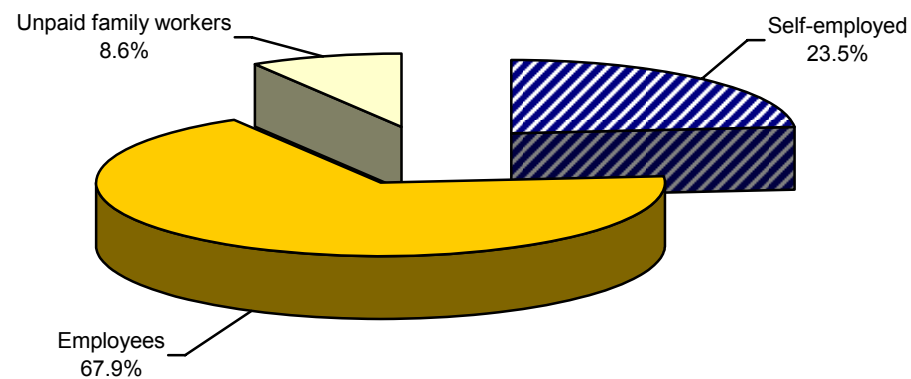
**Structure of population aged 15 and over, by activity and sex, October 2008**



## 7. Structure of employed persons by employment status, sex, region, type of settlement, educational attainment and age, October 2008

	Total	Sex		Region			Type of settlement		Educational attainment				Age groups					
	October 2008	male	female	Central Serbia without Belgrade	Belgrade	Vojvodina	urban	rural	Without educational attainment	low	medium	high	15-24	25-34	35-44	45-54	55-64	65 and over
Self-employed	23.5	29.9	14.9	29.5	11.3	21.4	14.5	34.2	45.3	41.6	19.4	10.9	9.4	13.9	19.2	22.9	34.1	70.1
Employees	67.9	66.2	70.1	56.8	87.7	74.6	84.1	48.7	5.2	36.6	75.8	88.7	76.1	80.5	74.7	71.2	53.9	2.6
Unpaid family workers	8.6	3.9	14.9	13.8	1.1	4.1	1.4	17.1	49.5	21.8	4.7	0.4	14.6	5.6	6.1	5.9	11.9	27.3
<b>Total</b>									<b>100%</b>									

### Structure of employed persons by employment status, October 2008





## 8. Structure of employed persons by sections of activities, sex, region, type of settlement, educational attainment and age, October 2008

%

	Total	Sex		Region			Type of settlement		Educational attainment				Age groups					
	October 2008	male	female	Central Serbia without Belgrade	Belgrade	Vojvodina	urban	rural	Without educational attainment	low	medium	high	15-24	25-34	35-44	45-54	55-64	65 and over
Agriculture, forestry and water works supply	24.0	23.6	24.5	32.9	2.5	23.1	4.2	47.3	91.4	62.1	13.0	2.9	20.4	11.2	16.2	19.5	38.4	92.6
Fishing	0.1	0.1	...	...	-	0.2	-	0.1	-	...	0.1	-	-	0.2	0.1	...	-	-
Mining and quarrying	1.2	1.8	0.3	1.4	1.2	0.7	1.1	1.3	-	1.2	1.4	0.6	0.9	1.1	1.8	1.2	0.8	-
Manufacturing	18.0	20.0	15.3	18.7	11.4	22.1	19.5	16.3	1.3	12.4	22.4	13.0	18.1	18.0	21.0	21.5	13.1	1.0
Electricity, gas and water supply	1.5	2.2	0.5	1.4	1.8	1.4	2.0	0.9	-	0.5	1.8	2.1	0.4	1.7	1.7	1.6	1.7	-
Construction	6.5	10.2	1.6	5.6	7.0	7.9	7.0	6.0	1.3	8.1	6.6	4.6	8.7	5.8	6.9	7.4	6.3	1.1
Wholesale and retail trade, repair	15.0	13.0	17.7	12.4	20.7	15.6	19.6	9.5	4.4	4.4	21.1	10.8	22.7	22.7	16.7	11.8	9.1	0.8
Hotels and restaurants	3.0	2.7	3.6	2.6	4.5	2.7	4.0	1.9	-	1.0	4.5	1.5	7.2	3.8	3.1	2.9	1.3	-
Transport, storage and communications	5.4	7.4	2.7	4.3	8.6	4.9	6.8	3.7	-	1.8	7.0	5.5	4.1	6.0	5.2	7.1	4.3	0.6
Financial intermediation	2.2	1.5	3.2	1.0	5.6	1.9	3.6	0.5	-	0.3	1.8	6.0	2.1	3.2	2.6	2.2	1.1	0.2
Real estate activities, renting	3.2	3.1	3.3	2.0	6.9	2.5	5.0	1.0	-	0.9	2.9	7.2	1.9	4.3	2.9	3.4	3.0	1.2
Public administration and social security	4.8	4.8	4.8	4.7	6.2	3.9	6.1	3.3	-	0.7	4.7	10.9	2.4	5.3	6.3	5.1	4.0	-
Education	4.1	2.3	6.6	3.9	6.3	2.9	5.7	2.3	-	1.4	1.2	17.1	0.4	3.5	4.2	4.7	6.9	0.6
Health and social work	6.4	2.7	11.4	5.4	9.0	6.2	8.9	3.4	-	1.7	6.4	12.8	4.4	6.4	6.9	7.7	5.9	0.6
Other community, social and personal service activities	4.4	4.6	4.1	3.4	8.0	3.5	6.2	2.2	1.0	2.7	5.1	4.7	6.2	6.4	4.4	3.6	3.7	0.8
Households with employed persons	0.2	0.1	0.4	0.1	0.3	0.4	0.3	0.2	0.6	0.6	0.1	-	-	0.3	0.1	0.2	0.4	0.6
Extra-territorial organizations and bodies	...	...	...	-	-	0.1	0.1	-	-	-	...	0.1	-	0.1	0.1	-	-	-
<b>Total</b>										<b>100%</b>								

## 9. Structure of employed persons by occupation, sex, region, type of settlement, educational attainment and age, October 2008

%

	Total	Sex		Region			Type of settlement		Educational attainment				Age groups					
	October 2008	male	female	Central Serbia without Belgrade	Belgrade	Vojvodina	urban	rural	Without educational attainment	low	medium	high	15-24	25-34	35-44	45-54	55-64	65 and over
Legislators, senior officials and directors - managers	5.7	6.4	4.7	5.5	5.8	6.0	7.7	3.4	-	1.1	5.4	13.2	1.4	5.6	6.9	6.7	5.7	0.9
Professionals	10.5	8.1	13.7	7.8	21.5	6.9	16.7	3.2	-	0.2	1.3	52.9	1.3	11.4	11.1	12.5	11.5	2.7
Technicians and associate professionals	13.3	10.5	17.1	9.8	23.5	12.1	19.4	6.0	-	0.3	17.3	19.0	11.5	15.5	14.1	14.8	11.5	0.6
Clerks	5.9	4.5	7.8	4.8	7.6	6.8	8.2	3.3	-	2.0	8.4	3.8	5.2	7.6	4.8	7.1	5.7	0.2
Service workers and shop and market sales workers	13.5	9.7	18.7	11.6	16.9	14.7	16.9	9.5	1.8	5.4	20.1	4.7	25.9	20.5	14.6	10.6	6.6	1.1
Skilled agricultural and fishery workers	20.4	19.9	21.1	31.0	1.9	13.6	2.5	41.4	77.8	54.8	10.4	2.0	14.7	8.9	13.0	15.6	33.7	90.0
Craft and related trades workers	14.0	20.6	5.0	14.2	11.4	15.9	14.1	13.9	-	11.0	19.6	1.8	18.4	14.7	15.4	15.5	11.0	0.6
Plant and machine operators and assemblers	7.4	11.5	1.7	6.7	6.6	9.4	7.3	7.4	-	5.9	10.2	1.0	8.6	7.8	8.8	8.0	5.2	0.4
Elementary occupations	9.2	8.3	10.3	8.5	4.4	14.4	6.9	11.8	20.4	19.4	7.0	1.3	13.0	7.3	10.9	9.2	9.1	3.5
Armed forces	0.2	0.4	...	0.2	0.3	0.1	0.3	0.1	-	-	0.3	0.4	-	0.6	0.4	-	-	-
<b>Total</b>										<b>100%</b>								

**10. Structure of employed persons by type of working time, sex, region, type of settlement, employment status, educational attainment and age, October 2008**

%

	Total	Sex		Region			Type of settlement		Employed persons			Educational attainment			Age groups						
	October 2008	male	female	Central Serbia without Belgrade	Belgrade	Vojvodina	urban	rural	Self-employed	employees	Family workers	Without educational attainment	low	medium	high	15-24	25-34	35-44	45-54	55-64	65 and over
Full-time job	90.9	91.7	89.9	89.4	96.4	89.7	94.8	86.4	79.6	97.3	71.8	59.1	82.1	93.9	95.6	87.6	94.1	94.9	94.1	86.7	62.0
Part-time job	9.1	8.3	10.1	10.6	3.6	10.3	5.2	13.6	20.4	2.7	28.2	40.9	17.9	6.1	4.4	12.4	5.9	5.1	5.9	13.3	38.0
<b>Total</b>	<b>100%</b>																				

**11. Employed persons by number of hours usually worked per a week, sex, region, type of settlement, employment status, educational attainment and age, October 2008**

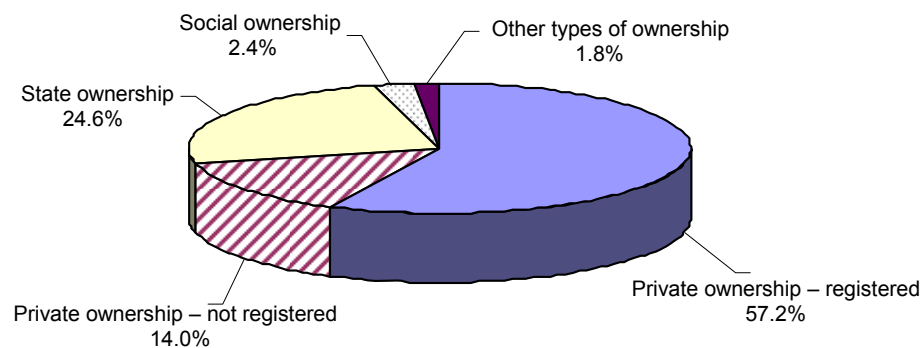
	Total	Sex		Region			Type of settlement		Employed persons			Educational attainment			Age groups						
	October 2008	male	female	Central Serbia without Belgrade	Belgrade	Vojvodina	urban	rural	Self-employed	employees	Family workers	Without educational attainment	low	medium	high	15-24	25-34	35-44	45-54	55-64	65 and over
<b>Total</b>	<b>2805307</b>	<b>1615197</b>	<b>1190110</b>	<b>1491028</b>	<b>592747</b>	<b>721532</b>	<b>1517216</b>	<b>1288091</b>	<b>660628</b>	<b>1903656</b>	<b>241024</b>	<b>29196</b>	<b>686236</b>	<b>1575157</b>	<b>514719</b>	<b>191298</b>	<b>569202</b>	<b>700948</b>	<b>772287</b>	<b>412486</b>	<b>159085</b>
1 hour	296	296	-	-	-	296	-	296	-	296	-	-	-	296	-	-	-	296	-	-	-
2-4	2984	1363	1621	1322	696	966	1950	1034	299	2287	398	-	667	766	1552	299	855	-	467	965	398
5-9	9832	6026	3805	2002	1464	6367	4547	5285	6724	2810	297	-	4007	4667	1158	1974	1695	2068	2733	1052	310
10-14	28755	17353	11401	12004	3325	13426	9902	18853	17356	4612	6787	1385	13608	11054	2707	1593	2155	4941	4751	6363	8951
15-19	23337	10761	12576	9661	6211	7465	11178	12159	8404	7305	7629	932	7983	9938	4484	3066	4571	4370	3400	2444	5486
20-29	119140	54456	64684	80230	8973	29938	33386	85754	61520	22220	35399	7307	56904	43563	11366	11503	16445	12896	19979	26932	31384
30-39	188914	96022	92892	108866	36824	43224	80506	108408	74173	86165	28576	5328	68629	83914	31043	10700	30599	36708	48600	37490	24815
40-49	1873347	1044279	829068	918573	473999	480775	1191186	682161	227202	1576783	69362	8677	301846	1141577	421247	121795	419940	499107	552508	234729	45268
50-59	268510	169699	98811	146688	46500	75322	107057	161453	117195	110529	40786	3248	96785	143657	24820	23147	47314	65508	69769	43523	19249
60 hours and more	287695	213187	74508	210567	14756	62372	77232	210463	146639	89267	51789	2318	134235	134799	16343	16667	45628	74312	69808	58059	23222
Unknown	2497	1754	743	1115	-	1382	271	2226	1115	1382	-	-	1572	925	-	554	-	743	271	929	-

## 12. Structure of employed persons by type of ownership, region, type of settlement, employment status, educational attainment and age, October 2008

%

	Total	Sex		Region			Type of settlement		Employed persons			Educational attainment			Age groups						
	October 2008	male	female	Central Serbia without Belgrade	Belgrade	Vojvodina	urban	rural	Self-employed	employees	Unpaid family workers	Without educational attainment	low	medium	high	15-24	25-34	35-44	45-54	55-64	65 and over
Private – registered ownership	57.2	59.7	53.8	56.2	54.9	61.1	56.9	57.6	59.8	55.5	63.4	54.0	54.9	63.6	40.6	74.4	67.9	57.8	52.3	44.7	51.1
Private – not registered ownership	14.0	14.3	13.6	18.5	3.5	13.5	5.2	24.4	38.5	2.7	36.3	43.7	34.2	8.5	2.4	13.7	6.6	9.8	11.8	22.7	48.1
State ownership	24.6	21.4	28.9	21.9	35.1	21.5	32.6	15.2	0.2	36.2	-	-	8.4	22.8	53.3	9.3	22.2	28.0	30.3	28.0	0.3
Social ownership	2.4	2.6	2.2	1.5	4.5	2.5	3.0	1.7	-	3.5	-	-	1.0	3.0	2.5	0.9	1.9	2.3	3.3	3.0	-
Other types of ownership	1.8	2.0	1.5	1.9	2.0	1.4	2.3	1.1	1.5	2.1	0.3	2.3	1.5	2.1	1.3	1.7	1.5	2.0	2.3	1.5	0.5
<b>Total</b>																					<b>100%</b>

Structure of employed persons by type of ownership, October 2008



**13. Structure of employed persons by specific types of working time, sex, region, type of settlement, employment status, educational attainment and age, October 2008**

	Total	Sex		Region			Type of settlement		Employed persons			Educational attainment			Age groups							
	October 2008	male	female	Central Serbia without Belgrade	Belgrade	Vojvodina	urban	rural	Self-employed	employees	Unpaid family workers	Without educational attainment	low	medium	high	15-24	25-34	35-44	45-54	55-64	65 and over	
Often	21.0	22.3	19.1	22.7	18.5	19.5	19.9	22.2	25.5	19.1	23.4	16.2	21.7	24.3	10.1	23.2	22.5	23.2	19.4	18.4	17.0	
Sometimes	23.6	25.5	21.0	24.7	22.5	22.2	20.2	27.6	31.1	20.1	30.8	32.6	28.1	23.0	19.0	23.1	24.1	23.4	22.7	23.8	27.3	
Never	55.4	52.2	59.9	52.6	59.0	58.3	59.9	50.2	43.4	60.8	45.8	51.3	50.2	52.7	70.9	53.7	53.4	53.4	57.9	57.8	55.7	
Evening work – all																						100%
Often	7.2	9.5	4.1	6.1	7.7	8.9	8.7	5.4	4.4	8.8	1.7		4.6	9.6	3.5	10.6	9.0	8.9	6.4	4.1	1.0	
Sometimes	9.4	11.4	6.6	9.0	10.2	9.5	9.3	9.5	8.8	9.8	7.2	4.9	7.9	11.0	6.5	10.1	10.3	10.4	9.4	7.6	4.6	
Never	83.4	79.1	89.4	84.9	82.1	81.6	82.0	85.1	86.8	81.3	91.2	95.1	87.5	79.3	90.0	79.3	80.6	80.7	84.2	88.3	94.4	
Night work - all																						100%
Often	46.4	49.1	42.8	54.9	25.4	46.1	34.8	60.1	72.5	33.3	78.4	72.3	68.3	46.0	17.1	50.9	44.9	45.5	41.4	47.5	72.2	
Sometimes	28.0	29.5	25.9	24.9	33.3	30.2	30.5	25.1	21.0	31.8	17.6	21.6	22.8	30.0	29.3	32.4	30.9	27.8	28.1	24.8	21.7	
Never	25.6	21.4	31.3	20.2	41.3	23.7	34.7	14.8	6.5	34.9	4.0	6.1	8.9	24.0	53.6	16.7	24.2	26.7	30.6	27.8	6.1	
Saturday work – all																						100%
Often	23.8	25.1	22.0	29.6	12.0	21.4	14.3	35.0	45.5	12.5	53.3	53.1	41.6	21.4	5.7	21.6	19.9	21.6	20.4	30.5	49.2	
Sometimes	22.2	24.9	18.4	23.4	18.4	22.7	18.9	26.0	26.8	19.7	28.8	29.7	27.5	23.1	11.8	27.3	21.5	23.2	20.2	20.2	28.5	
Never	54.1	50.0	59.6	47.0	69.6	55.9	66.8	39.1	27.7	67.8	17.9	17.3	30.9	55.5	82.5	51.1	58.6	55.2	59.4	49.4	22.3	
Sunday work – all																						100%
Often	4.7	4.3	5.2	4.7	3.8	5.3	2.4	7.3	12.2	1.2	11.5	10.1	9.4	3.1	2.9	4.0	2.0	3.2	4.6	7.2	15.2	
Sometimes	2.8	2.9	2.8	1.7	5.6	3.0	3.5	2.1	4.6	2.4	1.8		2.2	2.1	6.0	1.8	3.5	2.5	2.6	3.8	2.4	
Never	92.5	92.9	91.9	93.6	90.6	91.7	94.1	90.6	83.3	96.4	86.7	89.9	88.4	94.8	91.1	94.2	94.5	94.3	92.9	89.0	82.4	
Working at home - all																						100%

14. Structure of employees by permanency of job, sex, region, type of settlement, educational attainment and age, October 2008

%

	Total	Sex		Region			Type of settlement		Educational attainment				Age groups					
	October 2008	male	female	Central Serbia without Belgrade	Belgrade	Vojvodina	urban	rural	Without educational attainment	low	medium	high	15-24	25-34	35-44	45-54	55-64	65 and over
Permanent job	87.0	85.4	89.0	89.6	91.3	78.7	89.0	82.9	-	71.1	87.9	93.7	61.0	84.1	87.9	93.8	91.1	79.4
Temporary job	8.0	7.9	8.2	7.0	6.7	10.9	7.7	8.6	-	8.0	9.0	5.4	24.6	11.9	7.8	2.7	3.1	-
Seasonal job	2.8	3.4	2.0	1.7	1.0	6.2	1.7	5.0	87.7	12.8	1.5	0.3	6.9	2.3	2.7	2.1	2.7	7.5
Casual job	2.2	3.3	0.9	1.7	1.0	4.1	1.6	3.5	12.3	8.1	1.6	0.6	7.6	1.8	1.5	1.4	3.1	13.1
<b>Total</b>									<b>100%</b>									

15. Structure of unemployed persons by length of job seeking, sex, region, type of settlement, educational attainment and age, October 2008

%

	Total	Sex		Region			Type of settlement		Educational attainment				Age groups				
	October 2008	male	female	Central Serbia without Belgrade	Belgrade	Vojvodina	urban	rural	Without educational attainment	low	medium	high	15-24	25-34	35-44	45-54	55-64
Have not started seeking job	0.4	0.4	0.3	0.3	0.3	0.5	0.2	0.6	-	0.3	0.3	0.6	0.5	0.5	0.4	-	-
Less than 1 month	3.2	2.8	3.5	2.7	3.6	3.7	3.4	2.7	-	2.8	2.9	5.8	4.2	5.0	1.1	1.6	1.3
1 - 2 months	6.3	6.3	6.2	6.3	5.4	6.9	5.5	7.8	-	6.2	5.7	10.1	11.1	5.1	4.5	3.7	5.9
3-5	8.3	8.9	7.8	7.3	8.4	10.5	8.2	8.6	22.1	3.6	9.1	11.9	17.3	7.1	4.1	5.5	1.4
6-11	11.2	11.2	11.2	10.5	12.7	11.3	12.2	9.2	-	8.6	10.9	17.7	12.4	12.2	10.8	9.0	9.5
12-17	10.2	10.1	10.3	9.1	12.2	10.7	10.7	9.3	-	7.5	10.5	13.1	15.2	8.5	6.6	8.7	12.5
18-23	6.7	7.3	6.0	5.5	8.6	7.5	6.9	6.3	-	6.0	6.9	6.4	9.0	6.9	2.6	6.6	8.2
24-47 months	14.4	12.2	16.5	15.5	15.1	11.6	14.1	14.9	-	13.3	14.8	13.8	17.6	13.9	14.1	13.0	9.5
4-6 years	17.9	20.2	15.7	18.6	16.3	17.9	19.4	15.2	-	20.3	18.0	13.5	11.1	19.5	20.9	19.4	23.4
7-10 years	10.6	11.1	10.1	13.2	9.0	6.6	10.7	10.4	-	13.9	10.9	2.9	1.7	13.9	9.3	16.7	13.8
10 years and more	11.0	9.3	12.5	11.1	8.4	12.8	8.7	15.1	77.9	17.5	9.9	4.1	-	7.3	25.6	15.7	14.5
<b>Total</b>									<b>100%</b>								

### 16. Unemployed persons by previous employment status, sex, region, type of settlement, educational attainment and age, October 2008

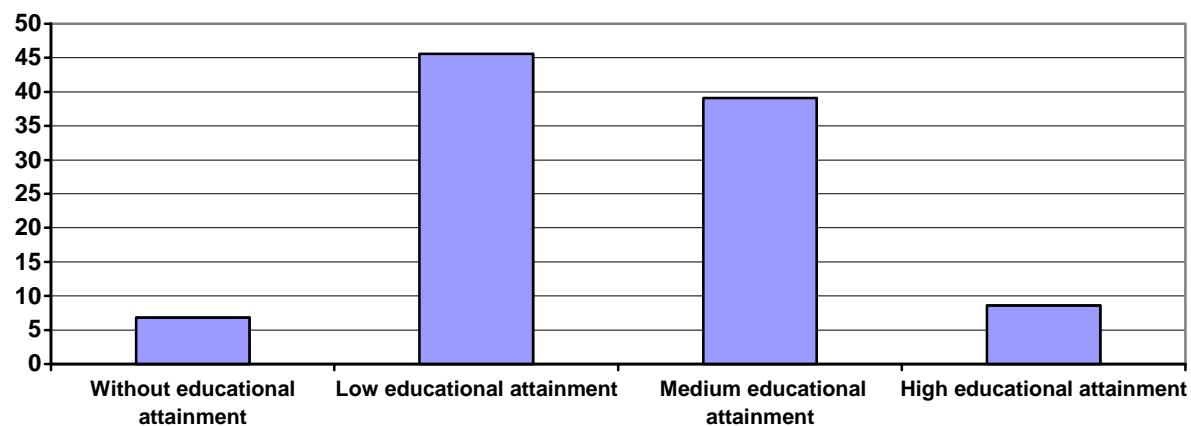
	Total	Sex		Region			Type of settlement		Educational attainment				Age groups				
	October 2008	male	female	Central Serbia without Belgrade	Belgrade	Vojvodina	urban	rural	Without educational attainment	low	medium	high	15-24	25-34	35-44	45-54	55-64
<b>Total</b>	<b>457205</b>	<b>221737</b>	<b>235468</b>	<b>239649</b>	<b>98262</b>	<b>119293</b>	<b>297660</b>	<b>159544</b>	<b>1437</b>	<b>89281</b>	<b>315315</b>	<b>51172</b>	<b>114382</b>	<b>137200</b>	<b>82172</b>	<b>89605</b>	<b>33845</b>
Seeking job for the first time	200371	91422	108949	110524	44018	45829	119970	80401	1119	38060	136550	24641	90471	77313	23421	8683	483
Were employed	256834	130315	126519	129125	54244	73465	177691	79143	318	51221	178765	26531	23911	59888	58751	80923	33362
Main reason for leaving last job:																	
Dismissal, wind from, liquidation of company	136660	66692	69968	64806	27851	44002	96349	40311	-	24736	99629	12294	7864	24553	28128	53338	22776
Temporary or seasonal job	42231	23864	18367	23603	5616	13012	30171	12060	-	10682	26853	4696	8560	14252	13737	4406	1276
Take care of children or other dependants	7886	508	7379	2974	2677	2235	5120	2767	-	2659	5228	-	636	1820	3043	1844	544
Private or family reasons	26664	14579	12085	17071	7087	2505	16950	9714	-	4918	17327	4419	1651	7838	7647	8011	1517
Illness or disability	4935	2552	2382	1728	732	2474	2732	2202	318	2110	2506	-	879	1440	355	1675	586
Education or training	992	290	702	-	-	992	992	-	-	458	534	-	458	534	-	-	-
Early retirement	512	512	-	512	-	-	343	169	-	-	169	343	-	-	-	343	169
Regular retirement	997	495	501	-	997	-	997	-	-	-	495	501	-	495	-	-	501
Compulsory military service	2083	2083	-	1315	-	769	553	1530	-	568	1515	-	1774	309	-	-	-
Other reasons	33874	18739	15135	17115	9285	7475	23484	10390	-	5089	24509	4277	2089	8647	5841	11304	5993

### 17. Structure of inactive persons by sex, region, type of settlement and age, October 2008

%

	Total		Sex		Region			Type of settlement		Age groups					
	October 2008		male	female	Central Serbia without Belgrade	Belgrade	Vojvodina	urbam	rural	15-24	25-34	35-44	45-54	55-64	65 and over
Without educational attainment	6.8		2.4	9.5	9.2	1.6	6.9	3.4	12.0	0.9	2.1	2.7	2.8	2.2	14.1
Low educational attainment	45.6		40.6	48.7	49.6	32.6	49.3	37.2	58.5	54.1	19.7	34.0	38.7	40.0	51.2
Middle educational attainment	39.1		44.5	35.6	35.4	48.5	37.7	47.1	26.6	44.0	69.6	58.4	50.3	45.5	23.8
High educational attainment	8.6		12.5	6.1	5.8	17.3	6.2	12.3	2.8	1.0	8.6	4.8	8.2	12.3	10.9
<b>Total</b>									<b>100%</b>						

Structure of inactive persons by educational attainment, October 2008



## Main Definitions

The Labor Force Survey observes population aged 15 and over, relative to the activity status in the respective week and not according to the formal status of the persons interviewed.

The term **employed** here anticipates the persons who did a job for at least one hour in the respective week and were duly remunerated (payments in money or in kind), as well as the persons who were employed and were absent from work in the observed week.

**Unpaid family workers** are the persons rendering help, i.e. service to other household members in running family business or agricultural household and were not remunerated for their work.

The term **unemployed** refers to the persons who, in the respective week did not perform any work for remuneration and who did not have a job they were absent from and which they could carry on after the absence, in case they met the conditions as follows:

- In the last four weeks these persons undertook active steps to find job and if a job was offered, they would start working within two weeks time;
- In the last four weeks these persons undertook no active steps to find job, since they had already found job and were about to start working after the respective week, latest within the following three – month period.

**Active population (labor force)** includes all employed and unemployed persons aged 15 and over.

**Inactive population** consists of the population aged 15 and over who were not categorized as active population.

**Activity rate** presents the percentage share of active population in total population aged 15 and over.

**Employment rate** presents the percentage share of employed population in total population aged 15 and over.

**Unemployment rate** presents the percentage share of unemployed population in total number of active population.

**Inactivity rate** presents the percentage share of inactive population in total population aged 15 and over.

## Methodological differences, October 2007 – April 2008

In the previous module, referring to employment status of the interviewed persons, in October 2007, there was only a single question that defined whether the person was employed or unemployed. After the revision of the questionnaire and harmonization of methodology with the latest standards of Eurostat in 2008, several new questions have been added, defining more precisely whether a person is employed or unemployed. Such changes have resulted in decreased number of unemployed, in relation to October 2007, as well as in increased number of the employed persons. Furthermore, decreased unemployment rate was also caused by changed sampling procedure, meaning that instead of sample that enabled households' exchange, the newly introduced sample provides no such exchanges.

Published and printed by: Statistical Office of the Republic of Serbia, Milana Rakica 5, Belgrade  
Phone: +381-11- 2412-922 • Fax: +381-11- 2411- 260 • [www.stat.gov.rs](http://www.stat.gov.rs)  
Responsible – Dragan Vukmirovic, PhD, Director  
Circulation: 130 • Issued semi-annually