

COMMUNICATION

PO12

Number 32 • Year LVIII, 21/02/2008

Statistics of agriculture

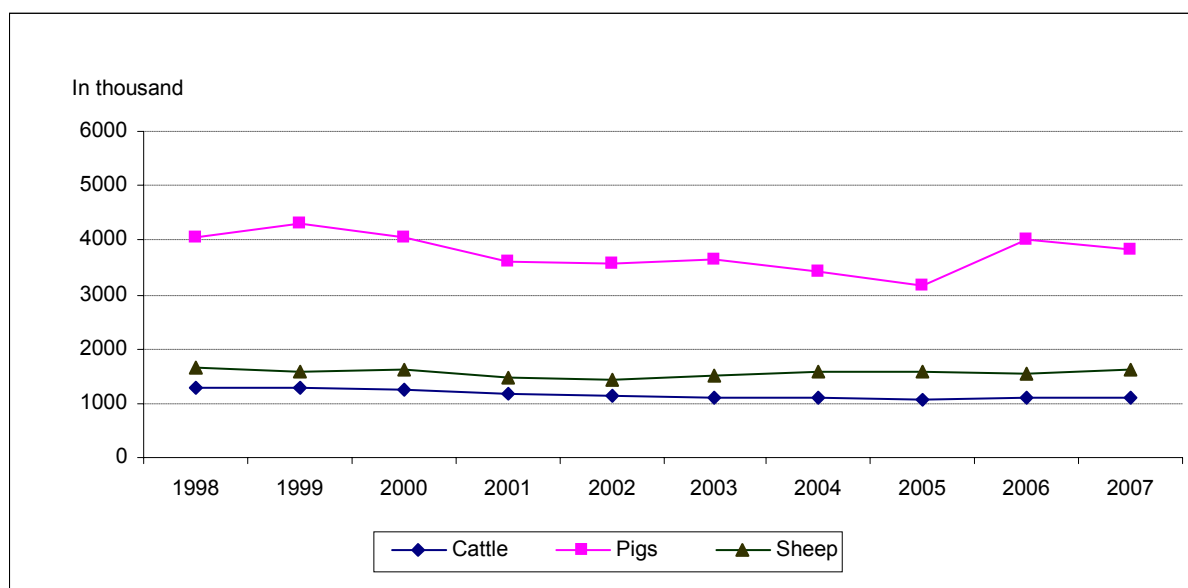
SERB 32 PO12 210208

Number of livestock and poultry As of 01.12.2007

- Preliminary results -

	Horses	Cattle		Pigs		Sheep		Poultry	Goats
		Total	Cows and heifers in calf	Total	Sows and sows of first farrow	Total	Ewes for breeding		
TOTAL									
REPUBLIC OF SERBIA	18495	1087077	648090	3831894	550127	1606156	1191726	16421755	149435
Central Serbia	11247	826015	537953	2293770	384064	1374851	1036771	9996040	101371
Vojvodina	7248	261062	110137	1538124	166063	231305	154955	6425715	48064
Agricultural enterprises and cooperatives									
REPUBLIC OF SERBIA	290	70352	25272	658197	66123	20649	12687	1504048	394
Central Serbia	4	41287	11732	161400	14575	8908	5320	443809	280
Vojvodina	286	29065	13540	496797	51548	11741	7367	1060239	114
Private holdings									
REPUBLIC OF SERBIA	18205	1016725	622818	3173697	484004	1585507	1179039	14917707	149041
Central Serbia	11243	784728	526221	2132370	369489	1365943	1031451	9552231	101091
Vojvodina	6962	231997	96597	1041327	114515	219564	147588	5365476	47950
INDICES, 2006=100									
REPUBLIC OF SERBIA	93,7	98,3	96,1	95,8	88,5	103,2	102,1	99,0	92,1
Central Serbia	90,8	98,0	96,0	96,6	91,5	102,8	101,8	98,3	90,3
Vojvodina	98,5	99,1	96,6	94,7	82,3	106,1	103,7	100,0	96,2
Agricultural enterprises and cooperatives									
REPUBLIC OF SERBIA	201,4	98,1	94,8	102,7	91,5	94,7	95,7	92,8	114,9
Central Serbia	36,4	97,7	93,4	100,4	82,7	92,2	83,4	103,6	103,7
Vojvodina	215,0	98,8	96,1	103,5	94,3	96,6	107,0	88,9	156,2
Private holdings									
REPUBLIC OF SERBIA	92,9	98,3	96,1	94,5	88,1	103,4	102,2	99,6	92,1
Central Serbia	90,9	98,1	96,1	96,3	91,9	102,8	102,0	98,0	90,3
Vojvodina	96,3	99,1	96,6	91,0	77,9	106,6	103,6	102,6	96,1

Livestock number in the Republic of Serbia, 1998- 2007



NOTES:

The presented data are preliminary results on the number of livestock and poultry and on the number of breeding heads, by types.

Data on the number of livestock and poultry, referring to agricultural enterprises and cooperatives are collected by regular annual reports. Starting with 2007, the data refer to number of livestock and poultry as of December 1st (instead of December 31st). Therefore, referring to data analysis, it should be noted that critical moment of the data recording has been changed.

Data on the number of livestock and poultry, related to private agricultural holdings and households are obtained by annual Livestock Number Survey. Starting with 2006, the Survey is carried out as of December 1st. The two - stage stratified sample has been applied in the survey, covering about 1 % of households.

The data as of December 1st 2007 in the Republic of Serbia, when compared to the previous data, show that number of cattle decreased by 1.7 %, number of cows and heifers in calf by 3.9%, of pigs by 4.2 %, of sows and sows of first farrow by 11.5 %, of poultry by 1.0 % and number of goats by 7.9 %, while the number of sheep increased by 3.2 % and number of breeding ewes by 2.1 %.

Data related to the Republic of Serbia do not include data on Kosovo and Metohia.

Final data on livestock number, by types and categories, as well as data on livestock balance, increase and livestock production will be published in April of the current year.

Published and printed by: Statistical Office of the Republic of Serbia, No 5 Milana Rakica 5, Belgrade
Phone: +381 11 2412-922 • Fax: +381 11 411-260 • www.statserb.sr.gov.yu
Responsible: Dragan Vukmirovic, PhD, Director
Circulation: 130 • Issued annually