

# Statistical release

# SN60

Number 174 - Year LXVII, 30/06/2017

**Population statistics**

SERB174 SN60 300617

## Internal migration, 2016

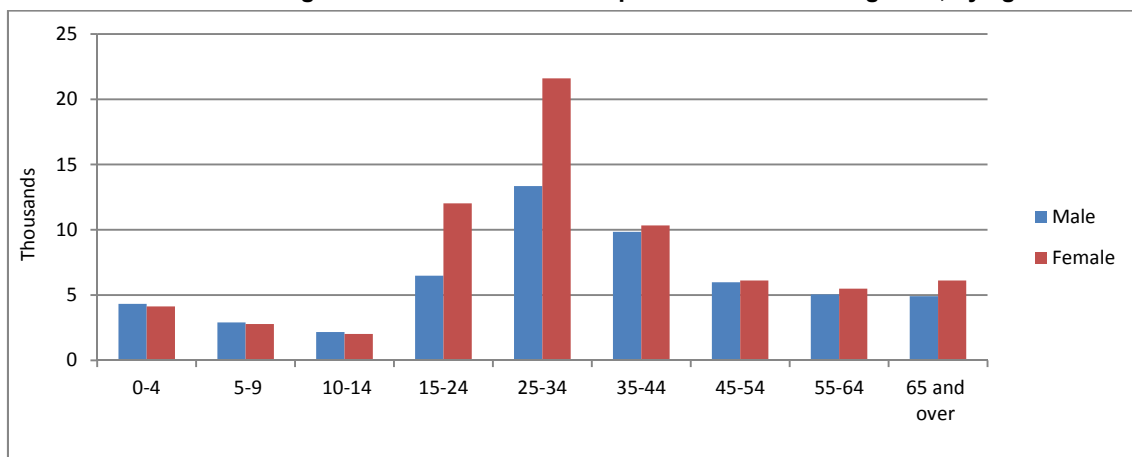
The statistical release on the internal migration in the Republic of Serbia during 2016 includes the data on persons who have changed residence<sup>1)</sup>, i.e. migrated permanently from their former place (settlement) of permanent residence to another place (settlement) within the Republic of Serbia.

Migration balance means the difference between the number of immigrated and emigrated persons on a certain area. The migration balance, along with the data on natural increase (difference between the number of live births and deaths), is the component used to calculate the estimated number of inhabitants of a selected area.

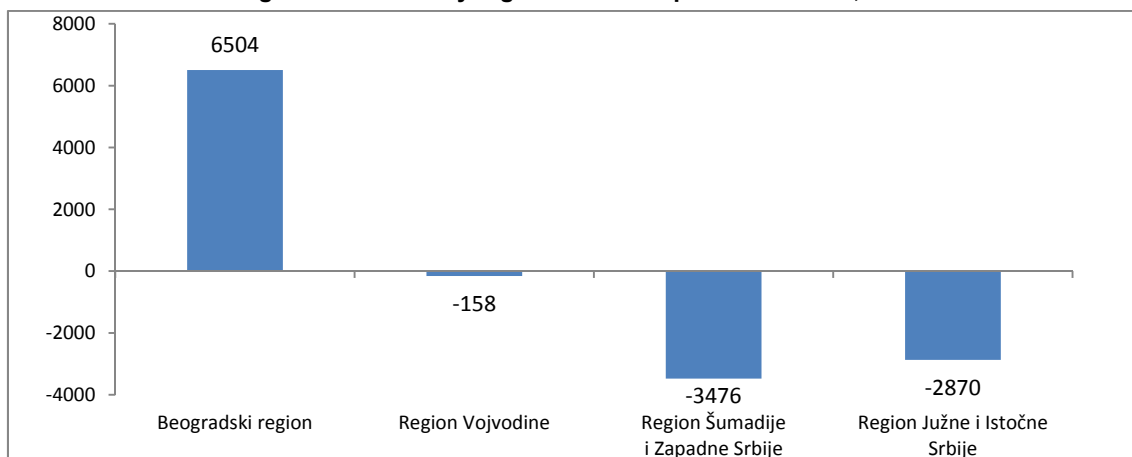
The Ministry of Internal Affairs is in charge of collecting the data on persons who have changed residence.

Starting from 1998 the Statistical Office of the Republic of Serbia has not available certain data for the AP Kosovo and Metohija; therefore these data are not contained in the coverage for the Republic of Serbia (total).

**Persons who have changed residence within the Republic of Serbia during 2016, by age and sex**



**Migration balance by regions of the Republic of Serbia, 2016**



<sup>1)</sup> Under the Law on Citizens' Residence and Domicile, „Official Gazette of the RS“, no 87/2011, residence is the place where citizens have settled in with the intention to live in permanently, i.e. the place which is the center of their everyday life activities, professional, economic, social and other relationships that confirm their permanent link with the place they have settled in“.

**Persons who have changed residence within the Republic of Serbia during 2016, by area they moved from/to**

Region Area Town/City – Municipality	Moved from				Moved to				Migration balance
	Total	From another area	From other towns/cities/municipalities within the same area	From another settlement within the same town/city/municipality	Total	To another area	To other towns/cities/municipalities within the same area	To another settlement within the same town/city/municipality	
<b>REPUBLIC OF SERBIA</b>	<b>125682</b>	<b>47931</b>	<b>48395</b>	<b>29356</b>	<b>125682</b>	<b>47931</b>	<b>48395</b>	<b>29356</b>	<b>0</b>
SRBIJA – SEVER	78931	29476	38812	10643	72585	23130	38812	10643	6346
<b>Beogradski region</b>	<b>50971</b>	<b>16086</b>	<b>31561</b>	<b>3324</b>	<b>44467</b>	<b>9582</b>	<b>31561</b>	<b>3324</b>	<b>6504</b>
<b>Beogradska oblast</b> <i>(Grad Beograd)</i>	<b>50971</b>	<b>16086</b>	<b>31561</b>	<b>3324</b>	<b>44467</b>	<b>9582</b>	<b>31561</b>	<b>3324</b>	<b>6504</b>
Barajevo	649	115	457	77	516	97	342	77	133
Voždovac	6137	2147	3856	134	4735	1020	3581	134	1402
Vračar	2698	718	1980	-	2353	374	1979	-	345
Grocka	1938	523	1153	262	1441	348	831	262	497
Zvezdara	6738	2341	4397	-	4496	1077	3419	-	2242
Zemun	4435	1536	2757	142	3626	995	2489	142	809
Lazarevac	1090	260	258	572	1337	301	464	572	-247
Mladenovac	927	211	294	422	922	218	282	422	5
Novi Beograd	6058	1921	4137	-	5774	1191	4583	-	284
Obrenovac	1520	313	581	626	1328	246	456	626	192
Palilula	6431	2270	3574	587	5000	1233	3180	587	1431
Rakovica	2923	941	1982	-	2975	643	2332	-	-52
Savski venac	1562	434	1128	-	1873	260	1613	-	-311
Sopot	333	70	205	58	344	67	219	58	-11
Stari grad	2043	575	1468	-	2347	345	2002	-	-304
Surčin	1176	318	700	158	845	212	475	158	331
Čukarica	4313	1393	2634	286	4555	955	3314	286	-242
<b>Region Vojvodine</b>	<b>27960</b>	<b>13390</b>	<b>7251</b>	<b>7319</b>	<b>28118</b>	<b>13548</b>	<b>7251</b>	<b>7319</b>	<b>-158</b>
<b>Zapadnobačka oblast</b>	<b>1917</b>	<b>1002</b>	<b>305</b>	<b>610</b>	<b>2476</b>	<b>1561</b>	<b>305</b>	<b>610</b>	<b>-559</b>
<i>Sombor</i>	809	343	116	350	1079	610	119	350	-270
Apatin	342	202	73	67	388	250	71	67	-46
Kula	358	221	34	103	560	404	53	103	-202
Odžaci	408	236	82	90	449	297	62	90	-41
<b>Južnobačanska oblast</b>	<b>3377</b>	<b>1463</b>	<b>889</b>	<b>1025</b>	<b>3909</b>	<b>1995</b>	<b>889</b>	<b>1025</b>	<b>-532</b>
<i>Pančevo</i>	1441	696	252	493	1590	890	207	493	-149
Alibunar	303	97	129	77	331	124	130	77	-28
Bela Crkva	224	70	103	51	231	118	62	51	-7
Vršac	518	183	167	168	660	290	202	168	-142
Kovačica	225	96	61	68	265	123	74	68	-40
Kovin	366	175	75	116	482	256	110	116	-116
Opovo	146	102	30	14	154	104	36	14	-8
Plandište	154	44	72	38	196	90	68	38	-42
<b>Južnobačka oblast</b>	<b>11715</b>	<b>5537</b>	<b>4114</b>	<b>2064</b>	<b>9875</b>	<b>3697</b>	<b>4114</b>	<b>2064</b>	<b>1840</b>
<i>Grad Novi Sad</i>	8261	4494	2488	1279	5979	2595	2105	1279	2282
Novi Sad	7444	4284	1927	1233	5133	2363	1537	1233	2311
Petrovaradin	817	210	561	46	846	232	568	46	-29
Bač	151	54	56	41	182	60	81	41	-31
Bačka Palanka	681	180	266	235	765	160	370	235	-84
Bački Petrovac	167	24	92	51	162	28	83	51	5
Beočin	289	89	144	56	270	62	152	56	19
Bečej	423	175	142	106	483	199	178	106	-60
Vrbas	468	152	178	138	664	221	305	138	-196
Žabalj	299	86	159	54	370	77	239	54	-71
Srbobran	190	64	98	28	215	62	125	28	-25
Sremski Karlovci	174	60	114	-	182	69	113	-	-8
Temerin	371	84	248	39	382	98	245	39	-11
Titel	241	75	129	37	221	66	118	37	20
<b>Severnobačanska oblast</b>	<b>1735</b>	<b>766</b>	<b>409</b>	<b>560</b>	<b>2095</b>	<b>1126</b>	<b>409</b>	<b>560</b>	<b>-360</b>
<i>Kikinda</i>	636	347	41	248	901	607	46	248	-265
Ada	206	93	53	60	198	77	61	60	8
Kanjiža	306	133	68	105	278	113	60	105	28
Novi Kneževac	180	72	53	55	221	117	49	55	-41
Senta	238	83	112	43	232	119	70	43	6
Čoka	169	38	82	49	265	93	123	49	-96

**Persons who have changed residence within the Republic of Serbia during 2016, by area they moved from/to (continued)**

Region Area <i>Town/City – Municipality</i>	Moved from				Moved to				Migration balance
	Total	From another area	From other towns/ cities/ muni- cipalities within the same area	From another settlement within the same town/city/ municipality	Total	To another area	To other towns/ cities/ muni- cipalities within the same area	To another settlement within the same town/city/ municipality	
<b>Severnobačka oblast</b>	<b>2693</b>	<b>1301</b>	<b>289</b>	<b>1103</b>	<b>2521</b>	<b>1129</b>	<b>289</b>	<b>1103</b>	<b>172</b>
<i>Subotica</i>	1937	980	128	829	1721	790	102	829	216
Bačka Topola	515	175	107	233	567	211	123	233	-52
Mali Idoš	241	146	54	41	233	128	64	41	8
<b>Srednjobanatska oblast</b>	<b>2181</b>	<b>1053</b>	<b>506</b>	<b>622</b>	<b>2660</b>	<b>1532</b>	<b>506</b>	<b>622</b>	<b>-479</b>
<i>Zrenjanin</i>	1381	661	253	467	1613	943	203	467	-232
Žitište	243	94	94	55	344	177	112	55	-101
Nova Crnja	126	55	48	23	195	117	55	23	-69
Novi Bečej	241	153	48	40	258	175	43	40	-17
Sečanj	190	90	63	37	250	120	93	37	-60
<b>Sremska oblast</b>	<b>4342</b>	<b>2268</b>	<b>739</b>	<b>1335</b>	<b>4582</b>	<b>2508</b>	<b>739</b>	<b>1335</b>	<b>-240</b>
<i>Sremska Mitrovica</i>	962	398	153	411	1087	529	147	411	-125
Indija	676	372	113	191	668	379	98	191	8
Irig	170	112	43	15	193	116	62	15	-23
Pećinci	331	189	62	80	360	189	91	80	-29
Ruma	758	356	199	203	757	420	134	203	1
Stara Pazova	1035	708	112	215	934	602	117	215	101
Šid	410	133	57	220	583	273	90	220	-173
SRBIJA – JUG	46751	18455	9583	18713	53097	24801	9583	18713	-6346
<b>Region Šumadije i Zapadne Srbije</b>	<b>27446</b>	<b>9946</b>	<b>4842</b>	<b>12658</b>	<b>30922</b>	<b>13422</b>	<b>4842</b>	<b>12658</b>	<b>-3476</b>
<b>Zlatiborska oblast</b>	<b>3623</b>	<b>1200</b>	<b>912</b>	<b>1511</b>	<b>4681</b>	<b>2258</b>	<b>912</b>	<b>1511</b>	<b>-1058</b>
<i>Grad Užice</i>	799	296	316	187	1175	502	486	187	-376
Užice	706	274	245	187	1043	463	393	187	-337
Sevojno	93	22	71	-	132	39	93	-	-39
Arilje	241	107	34	100	257	120	37	100	-16
Bajina Bašta	367	126	54	187	394	168	39	187	-27
Kosjerić	125	73	18	34	158	95	29	34	-33
Nova Varoš	205	53	48	104	356	193	59	104	-151
Požega	356	103	82	171	426	210	45	171	-70
Priboj	276	101	35	140	550	343	67	140	-274
Prijepolje	406	99	54	253	634	335	46	253	-228
Sjenica	350	100	16	234	470	216	20	234	-120
Čajetina	498	142	255	101	261	76	84	101	237
<b>Kolubarska oblast</b>	<b>2557</b>	<b>1141</b>	<b>432</b>	<b>984</b>	<b>2674</b>	<b>1258</b>	<b>432</b>	<b>984</b>	<b>-117</b>
<i>Valjevo</i>	1355	546	205	604	1358	605	149	604	-3
Lajkovac	251	138	52	61	246	139	46	61	5
Ljig	148	80	15	53	199	130	16	53	-51
Mionica	199	91	56	52	240	82	106	52	-41
Osečina	142	52	57	33	173	75	65	33	-31
Ub	462	234	47	181	458	227	50	181	4
<b>Mačvanska oblast</b>	<b>4560</b>	<b>1640</b>	<b>918</b>	<b>2002</b>	<b>5115</b>	<b>2195</b>	<b>918</b>	<b>2002</b>	<b>-555</b>
<i>Šabac</i>	1755	636	340	779	1791	744	268	779	-36
Bogatić	352	174	97	81	376	187	108	81	-24
Vladimirci	270	100	104	66	287	107	114	66	-17
Koceljeva	255	120	60	75	265	134	56	75	-10
Krupanj	211	88	46	77	258	96	85	77	-47
Loznica	1265	321	173	771	1528	574	183	771	-263
Ljubovija	215	93	21	101	309	165	43	101	-94
Mali Zvornik	237	108	77	52	301	188	61	52	-64
<b>Moravička oblast</b>	<b>2886</b>	<b>990</b>	<b>358</b>	<b>1538</b>	<b>3285</b>	<b>1389</b>	<b>358</b>	<b>1538</b>	<b>-399</b>
<i>Čačak</i>	1733	539	224	970	1847	769	108	970	-114
Gornji Milanovac	491	206	49	236	600	286	78	236	-109
Ivanjica	421	153	31	237	512	220	55	237	-91
Lučani	241	92	54	95	326	114	117	95	-85

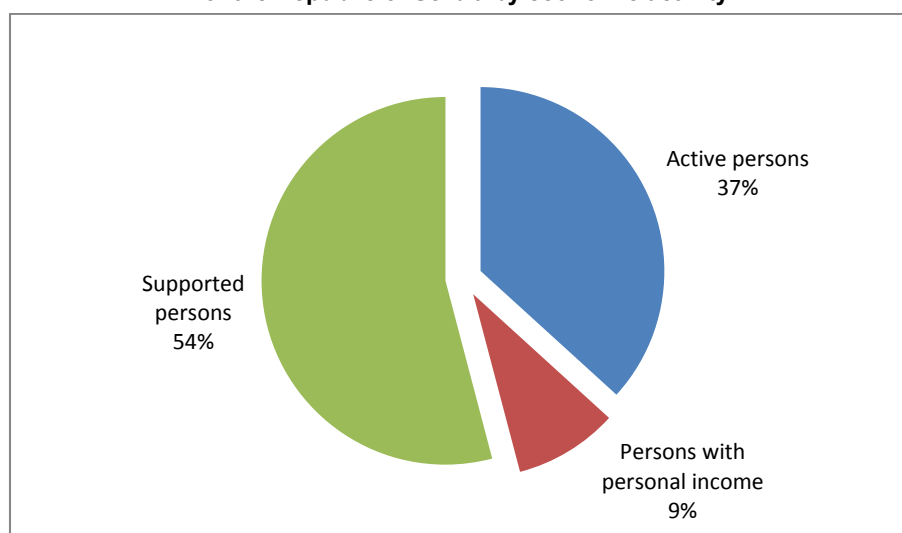
**Persons who have changed residence within the Republic of Serbia during 2016, by area they moved from/to (continued)**

Region Area <i>Town/City – Municipality</i>	Moved from				Moved to				Migration balance
	Total	From another area	From other towns/ cities/ muni- cipalities within the same area	From another settlement within the same town/city/ municipality	Total	To another area	To other towns/ cities/ muni- cipalities within the same area	To another settlement within the same town/city/ municipality	
<b>Pomoravska oblast</b>	<b>3003</b>	<b>1187</b>	<b>613</b>	<b>1203</b>	<b>3169</b>	<b>1353</b>	<b>613</b>	<b>1203</b>	<b>-166</b>
<i>Jagodina</i>	1217	434	239	544	1168	465	159	544	49
Despotovac	276	97	78	101	321	119	101	101	-45
Paraćin	681	284	86	311	761	349	101	311	-80
Rekovac	145	78	32	35	177	100	42	35	-32
Svilajnac	283	146	44	93	304	155	56	93	-21
Čuprija	401	148	134	119	438	165	154	119	-37
<b>Rasinska oblast</b>	<b>2977</b>	<b>905</b>	<b>399</b>	<b>1673</b>	<b>3733</b>	<b>1661</b>	<b>399</b>	<b>1673</b>	<b>-756</b>
<i>Kruševac</i>	1337	449	176	712	1680	819	149	712	-343
Aleksandrovac	255	80	46	129	354	161	64	129	-99
Brus	247	68	59	120	279	105	54	120	-32
Varvarin	172	66	43	63	209	95	51	63	-37
Trstenik	860	190	40	630	1082	400	52	630	-222
Čičevac	106	52	35	19	129	81	29	19	-23
<b>Raška oblast</b>	<b>4262</b>	<b>1175</b>	<b>586</b>	<b>2501</b>	<b>4740</b>	<b>1653</b>	<b>586</b>	<b>2501</b>	<b>-478</b>
<i>Kraljevo</i>	1618	518	121	979	1914	854	81	979	-296
Vrnjačka Banja	531	263	56	212	569	308	49	212	-38
Novi Pazar	1266	261	292	713	1078	239	126	713	188
Raška	514	92	42	380	634	202	52	380	-120
Tutin	333	41	75	217	545	50	278	217	-212
<b>Šumadijska oblast</b>	<b>3578</b>	<b>1708</b>	<b>624</b>	<b>1246</b>	<b>3525</b>	<b>1655</b>	<b>624</b>	<b>1246</b>	<b>53</b>
<i>Kragujevac</i>	2105	1017	270	818	1971	927	226	818	134
Arandjelovac	615	339	47	229	651	365	57	229	-36
Batočina	151	69	52	30	149	59	60	30	2
Knić	176	56	100	20	173	46	107	20	3
Lapovo	63	45	18	-	89	51	38	-	-26
Rača	148	44	56	48	175	71	56	48	-27
Topola	320	138	81	101	317	136	80	101	3
<b>Region Južne i Istočne Srbije</b>	<b>19305</b>	<b>8509</b>	<b>4741</b>	<b>6055</b>	<b>22175</b>	<b>11379</b>	<b>4741</b>	<b>6055</b>	<b>-2870</b>
<b>Borska oblast</b>	<b>1573</b>	<b>656</b>	<b>188</b>	<b>729</b>	<b>2036</b>	<b>1119</b>	<b>188</b>	<b>729</b>	<b>-463</b>
<i>Bor</i>	619	296	44	279	852	529	44	279	-233
Kladovo	215	72	34	109	272	125	38	109	-57
Majdanpek	251	105	34	112	404	235	57	112	-153
Negotin	488	183	76	229	508	230	49	229	-20
<b>Braničevska oblast</b>	<b>2230</b>	<b>876</b>	<b>714</b>	<b>640</b>	<b>2592</b>	<b>1238</b>	<b>714</b>	<b>640</b>	<b>-362</b>
<i>Grad Požarevac</i>	962	402	350	210	1088	593	285	210	-126
Požarevac	798	332	289	177	855	473	205	177	-57
Kostolac	164	70	61	33	233	120	80	33	-69
Veliko Gradište	256	100	99	57	297	139	101	57	-41
Golubac	182	60	59	63	187	77	47	63	-5
Žabari	95	44	28	23	171	91	57	23	-76
Žagubica	99	56	20	23	128	67	38	23	-29
Kučevo	174	67	32	75	220	88	57	75	-46
Malo Crniće	99	24	60	15	148	53	80	15	-49
Petrovac na Mlavi	363	123	66	174	353	130	49	174	10
<b>Zaječarska oblast</b>	<b>1541</b>	<b>678</b>	<b>194</b>	<b>669</b>	<b>1814</b>	<b>951</b>	<b>194</b>	<b>669</b>	<b>-273</b>
<i>Zaječar</i>	757	349	80	328	877	466	83	328	-120
Boljevac	237	101	45	91	252	130	31	91	-15
Knjaževac	332	119	46	167	424	208	49	167	-92
Sokobanja	215	109	23	83	261	147	31	83	-46
<b>Jablanička oblast</b>	<b>2443</b>	<b>963</b>	<b>414</b>	<b>1066</b>	<b>2972</b>	<b>1492</b>	<b>414</b>	<b>1066</b>	<b>-529</b>
<i>Leskovac</i>	1517	596	187	734	1803	924	145	734	-286
Bojnik	256	80	62	114	283	102	67	114	-27
Vlasotince	257	117	70	70	281	159	52	70	-24
Lebane	262	97	58	107	376	178	91	107	-114
Medveđa	113	56	18	39	166	95	32	39	-53
Crna Trava	38	17	19	2	63	34	27	2	-25

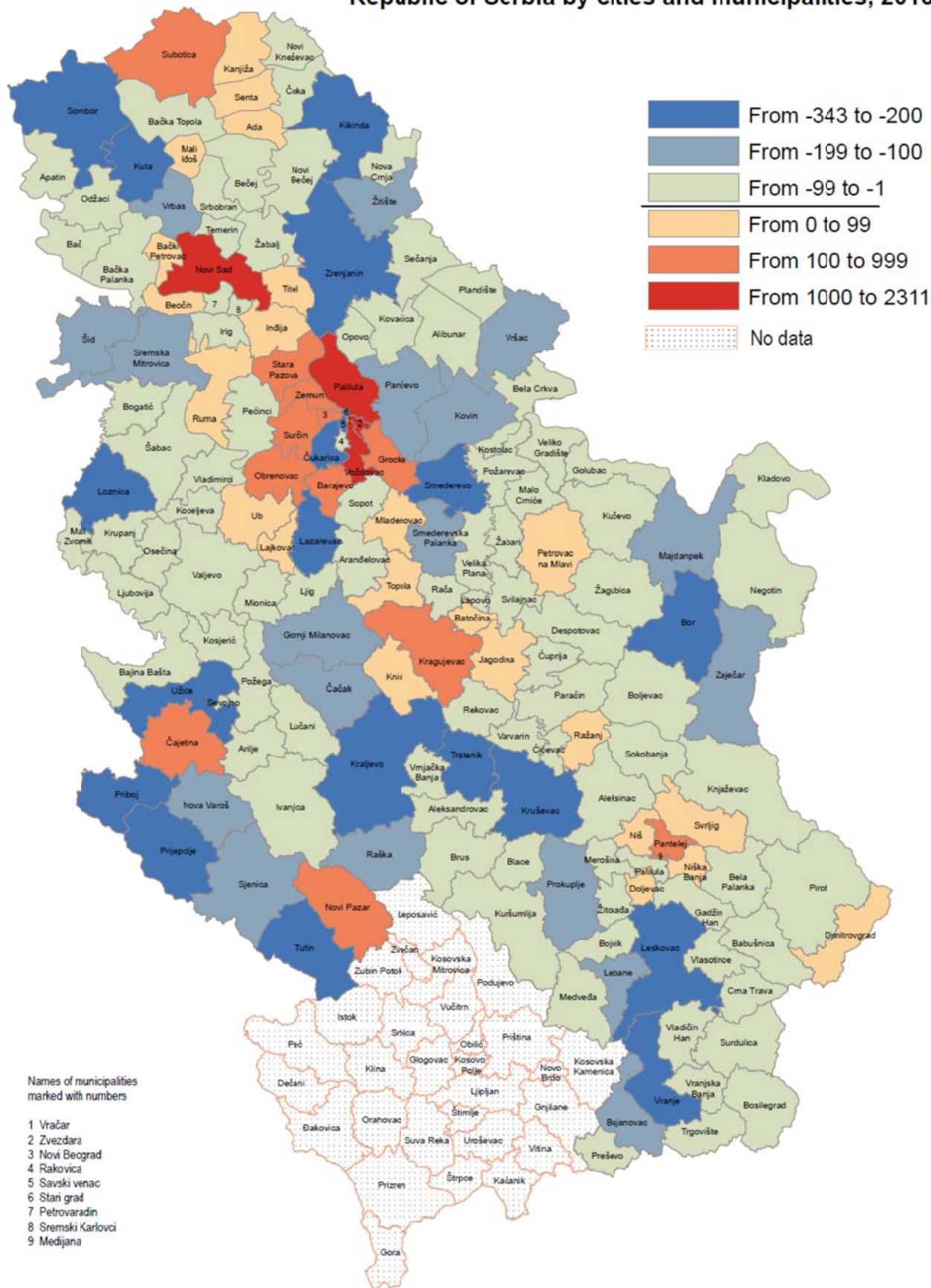
**Persons who have changed residence within the Republic of Serbia during 2016, by area they moved from/to (continued)**

Region Area <i>Town/City – Municipality</i>	Moved from				Moved to				Migration balance
	Total	From another area	From other towns/cities/municipalities within the same area	From another settlement within the same town/city/municipality	Total	To another area	To other towns/cities/municipalities within the same area	To another settlement within the same town/city/municipality	
<b>Nišavska oblast</b>	<b>5334</b>	<b>2545</b>	<b>2056</b>	<b>733</b>	<b>5049</b>	<b>2260</b>	<b>2056</b>	<b>733</b>	<b>285</b>
<i>Grad Niš</i>	3735	1998	1473	264	3410	1709	1437	264	325
Medijana	956	618	322	16	808	451	341	16	148
Niška Banja	432	205	189	38	422	188	196	38	10
Palilula	984	576	323	85	987	503	399	85	-3
Pantelejš	899	375	435	89	740	365	286	89	159
Crveni krst	464	224	204	36	453	202	215	36	11
Aleksinac	718	262	146	310	759	243	206	310	-41
Gadžin Han	114	20	76	18	134	19	97	18	-20
Doljevac	296	109	153	34	268	110	124	34	28
Merošina	178	49	108	21	196	61	114	21	-18
Ražanj	131	74	21	36	127	77	14	36	4
Svrljig	162	33	79	50	155	41	64	50	7
<b>Pirotska oblast</b>	<b>1036</b>	<b>474</b>	<b>146</b>	<b>416</b>	<b>1166</b>	<b>604</b>	<b>146</b>	<b>416</b>	<b>-130</b>
<i>Pirot</i>	587	248	67	272	669	327	70	272	-82
Babušnica	136	54	23	59	169	74	36	59	-33
Bela Palanka	202	135	27	40	219	161	18	40	-17
Dimitrovgrad	111	37	29	45	109	42	22	45	2
<b>Podunavska oblast</b>	<b>1851</b>	<b>1033</b>	<b>212</b>	<b>606</b>	<b>2310</b>	<b>1492</b>	<b>212</b>	<b>606</b>	<b>-459</b>
<i>Smederevo</i>	971	536	72	363	1186	740	83	363	-215
Velika Plana	431	233	86	112	493	305	76	112	-62
Smederevska Palanka	449	264	54	131	631	447	53	131	-182
<b>Pčinjska oblast</b>	<b>1994</b>	<b>588</b>	<b>670</b>	<b>736</b>	<b>2647</b>	<b>1241</b>	<b>670</b>	<b>736</b>	<b>-653</b>
<i>Grad Vranje</i>	815	282	309	224	1117	664	229	224	-302
Vranje	709	249	258	202	974	612	160	202	-265
Vranjska Banja	106	33	51	22	143	52	69	22	-37
Bosilegrad	78	22	13	43	127	49	35	43	-49
Bujanovac	256	46	114	96	373	144	133	96	-117
Vladičin Han	232	81	70	81	274	129	64	81	-42
Preševo	246	9	53	184	308	43	81	184	-62
Surdulica	274	127	74	73	318	177	68	73	-44
Trgovište	93	21	37	35	130	35	60	35	-37
<b>Toplička oblast</b>	<b>1303</b>	<b>696</b>	<b>147</b>	<b>460</b>	<b>1589</b>	<b>982</b>	<b>147</b>	<b>460</b>	<b>-286</b>
<i>Prokuplje</i>	552	289	84	179	686	466	41	179	-134
Blace	154	77	11	66	202	108	28	66	-48
Žitorađa	244	163	24	57	288	180	51	57	-44
Kuršumlija	353	167	28	158	413	228	27	158	-60
<b>Region Kosovo i Metohija</b>	...	...	...	...	...	...	...	...	...

**Persons who have changed residence within the Republic of Serbia during 2016 of the Republic of Serbia by economic activity**



## Migration balance of the Republic of Serbia by cities and municipalities, 2016



Contact: [gordana.bjelobrck@stat.gov.rs](mailto:gordana.bjelobrck@stat.gov.rs), tel.: 011 24-12-922, Ext. 248  
 Published and printed by: Statistical Office of the Republic of Serbia, Milana Rakica 5, 11050 Belgrade  
 Phone: +381 11 2412922 (telephone exchange) • Fax: +381 11 2411260 • [www.stat.gov.rs](http://www.stat.gov.rs)  
 Responsible: Dr Miladin Kovačević, Director  
 Circulation: 20 • Issued annually