

# STATISTICAL RELEASE

# ZP20

Number 19 - Year LXIII, 30.01.2013.

SERB019 ZP20 300113

## Statistics of employment and earnings

### Employees in the Republic of Serbia, 2012

- annual average -

Total number of formally employed in 2012. amounted to 1727048, presenting decrease of 1.1% in relation to 2011. Number of employees in legal entities was 1341114, and relative to 2011, it is the decrease of 0.1%, while number of registered unincorporated enterprises and their employees in 2012. amounted to 385934 and if compared to 2011, it is the decrease of 4.3%.

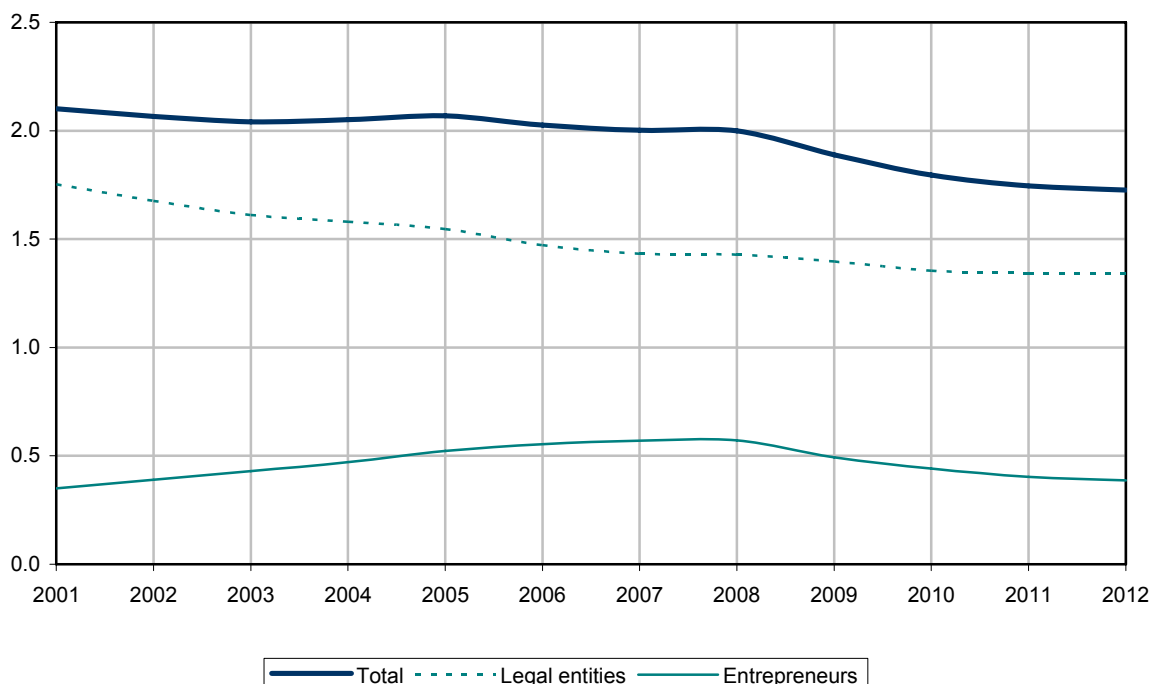
Expressed in percentages, the greatest decrease of employment in legal entities in 2012 relative to 2011 was noted in the following sections: Agriculture, forestry and fishing (5,2%) and Real estate activities (3.0%), while the highest increase was recorded in the sections of Information and communication (5,8%) and Professional, scientific and technical activities (3.8%).

In 2012, compared to 2011, the greatest decrease of the number of employees was noted in the section of Manufacturing (6077 persons), while the greatest increase was noted in the section of Information and communication (2198 persons).

In the structure of number of employees in legal entities in 2012, the greatest share was in the sections of Manufacturing (21.6%), Wholesale and retail trade; repair of motor vehicles and motorcycles (13.7%) and Human health and social work activities (12.0%).

### Employees - Republic of Serbia

Number of employees  
(mill.)



**Employees by  
- annual**
**Republic of Serbia**

Row no.	Region Area City - Municipality	Total	Employees at legal entities								
			All	where of: women	Agriculture, forestry and fishing	Mining and quarrying	Manufacturing	Electricity, gas, steam and air conditioning supply	Water supply; sewerage, waste management and remediation activities	Construction	Wholesale and retail trade; repair of motor vehicles and motor cycles
<b>1</b>	<b>REPUBLIC OF SERBIA</b>	<b>1727048</b>	<b>1341114</b>	<b>626109</b>	<b>33002</b>	<b>22245</b>	<b>289286</b>	<b>28148</b>	<b>32849</b>	<b>71198</b>	<b>183973</b>
<b>2</b>	<b>SRBIJA – SEVER</b>	<b>1014770</b>	<b>819776</b>	<b>391612</b>	<b>24197</b>	<b>10407</b>	<b>142405</b>	<b>13004</b>	<b>15380</b>	<b>47559</b>	<b>132492</b>
<b>3</b>	<b>Beogradski region</b>	<b>566807</b>	<b>468706</b>	<b>228915</b>	<b>4437</b>	<b>8101</b>	<b>53276</b>	<b>8311</b>	<b>7005</b>	<b>30852</b>	<b>85683</b>
<b>4</b>	<b>Beogradska oblast (Grad Beograd)</b>	<b>566807</b>	<b>468706</b>	<b>228915</b>	<b>4437</b>	<b>8101</b>	<b>53276</b>	<b>8311</b>	<b>7005</b>	<b>30852</b>	<b>85683</b>
5	Barajevo	3114	1708	883	42	0	220	0	89	258	233
6	Voždovac	45020	36885	15493	101	12	5597	593	68	4367	5867
7	Vračar	33409	26938	13692	119	16	1942	1005	2487	1698	4009
8	Grocka	9455	6220	3375	107	21	1138	39	315	381	1156
9	Zvezdara	38982	28802	13362	81	5	3021	52	1802	3096	5223
10	Zemun	50445	43286	20786	213	114	8935	703	31	3754	12237
11	Lazarevac	23821	21074	6680	11	7801	3108	531	768	2056	567
12	Mladenovac	9214	6401	3037	122	0	2301	58	215	113	505
13	Novi Beograd	94081	82899	39829	368	26	7031	2283	69	5485	23051
14	Obrenovac	13663	10356	3974	262	15	1004	2128	389	415	566
15	Palilula	51813	43922	20641	2229	54	5876	79	136	2676	7219
16	Rakovica	14960	10068	5130	79	19	2341	63	14	332	2518
17	Savski venac	73331	65268	38598	87	3	2900	1	31	3087	4626
18	Sopot	3839	1442	877	1	0	333	0	130	56	118
19	Stari grad	60202	54080	28660	83	3	3505	638	62	1185	9668
20	Surčin	9512	7818	3046	511	9	1086	0	6	135	2821
21	Čukarica	31946	21537	10854	20	4	2939	135	393	1759	5296
<b>22</b>	<b>Region Vojvodine</b>	<b>447963</b>	<b>351071</b>	<b>162696</b>	<b>19759</b>	<b>2306</b>	<b>89130</b>	<b>4692</b>	<b>8375</b>	<b>16707</b>	<b>46808</b>
<b>23</b>	<b>Zapadnobačka oblast</b>	<b>36312</b>	<b>27604</b>	<b>13080</b>	<b>2917</b>	<b>0</b>	<b>7587</b>	<b>299</b>	<b>725</b>	<b>690</b>	<b>3078</b>
24	Apatin	5349	3860	1770	319	0	1489	22	77	168	223
25	Kula	6532	5060	2194	550	0	1231	0	271	108	775
26	Odžaci	4952	3289	1421	575	0	880	33	17	29	226
27	Sombor	19479	15395	7695	1473	0	3987	244	360	384	1854
<b>28</b>	<b>Južnobačanska oblast</b>	<b>55179</b>	<b>42484</b>	<b>18688</b>	<b>2765</b>	<b>246</b>	<b>12892</b>	<b>597</b>	<b>1658</b>	<b>1704</b>	<b>3360</b>
29	Alibunar	2513	1711	821	244	0	425	17	61	11	93
30	Bela Crkva	2297	1713	835	265	3	142	59	3	30	109
31	Vršac	11498	9601	4719	398	40	3232	52	553	272	733
32	Kovačica	2910	2146	908	352	0	566	5	56	32	180
33	Kovin	5156	3621	1520	264	117	867	52	155	193	174
34	Opovo	558	558	287	110	0	60	0	30	5	55
35	Pančevo	28069	21473	8875	715	86	7092	383	777	1109	1995
36	Plandište	2177	1661	722	416	0	508	29	23	52	20
<b>37</b>	<b>Južnobačka oblast</b>	<b>183586</b>	<b>138435</b>	<b>64763</b>	<b>5294</b>	<b>1097</b>	<b>25742</b>	<b>1797</b>	<b>2232</b>	<b>8668</b>	<b>21980</b>
38	Grad Novi Sad	130721	101802	48670	1553	977	14573	1471	1104	7423	17059
39	Novi Sad	126083	97164	46068	1441	977	14056	1471	1101	7144	16402
40	Petrovaradin	4639	4639	2602	112	0	517	0	2	279	657
41	Bač	2166	1510	651	231	0	283	0	0	300	101
42	Bačka Palanka	12307	9205	3783	646	0	3697	37	311	332	1168
43	Bački Petrovac	2939	1814	884	316	0	540	0	51	47	229
44	Beočin	3114	1692	817	38	0	488	12	98	118	386
45	Bečej	7763	6027	2493	1125	119	1417	71	90	128	769
46	Vrbas	10013	6977	3338	411	0	2197	104	237	36	1039
47	Zabalj	3606	2300	1131	244	0	387	34	31	27	371
48	Srbobran	2479	1480	617	253	0	279	49	68	46	131
49	Sremski Karlovci	1086	1086	434	1	1	261	0	18	5	183
50	Temerin	5620	3432	1475	227	0	1431	19	181	163	437
51	Titel	1772	1110	471	249	0	188	0	44	42	107

<sup>1)</sup> Source: Republic Institute for Health Insurance.

**activity sections, 2012**  
**average -**

(companies, enterprises, cooperatives, institutions and other organizations)													Entrepreneurs and their employees <sup>1)</sup>		Row no.
Transport and storage	Accommodation and food service activities	Information and communication	Financial and insurance activities	Real estate activities	Professional, scientific and technical activities	Administrative and support service activities	Public administration and defence; compulsory social security	Education	Human health and social work activities	Arts, entertainment and recreation	Other service activities	All			
<b>84641</b>	<b>20306</b>	<b>39936</b>	<b>39245</b>	<b>3030</b>	<b>54219</b>	<b>29805</b>	<b>72662</b>	<b>138959</b>	<b>160884</b>	<b>22339</b>	<b>14386</b>	<b>385934</b>	<b>170884</b>	<b>1</b>	
<b>55446</b>	<b>13289</b>	<b>32673</b>	<b>31247</b>	<b>2431</b>	<b>43824</b>	<b>24714</b>	<b>42707</b>	<b>73511</b>	<b>88097</b>	<b>15738</b>	<b>10656</b>	<b>194994</b>	<b>89952</b>	<b>2</b>	
<b>35431</b>	<b>10255</b>	<b>23587</b>	<b>24137</b>	<b>1809</b>	<b>32663</b>	<b>17788</b>	<b>25261</b>	<b>35005</b>	<b>47216</b>	<b>9892</b>	<b>7998</b>	<b>98101</b>	<b>46709</b>	<b>3</b>	
<b>35431</b>	<b>10255</b>	<b>23587</b>	<b>24137</b>	<b>1809</b>	<b>32663</b>	<b>17788</b>	<b>25261</b>	<b>35005</b>	<b>47216</b>	<b>9892</b>	<b>7998</b>	<b>98101</b>	<b>46709</b>	<b>4</b>	
53	21	7	3	1	36	17	109	347	257	9	5	1406	543	5	
900	653	967	461	62	3201	2970	1832	3434	2256	365	3178	8135	3597	6	
436	728	1141	2856	93	3136	1601	1012	1321	1652	739	946	6471	3327	7	
332	91	54	5	0	817	67	180	720	751	23	23	3235	1446	8	
3899	427	833	453	148	2175	392	671	2407	3540	137	439	10180	5142	9	
2009	568	784	279	134	2329	1152	314	3668	5061	674	327	7159	3219	10	
641	568	45	37	0	214	2713	177	934	846	46	9	2747	1153	11	
478	29	15	144	0	98	75	175	752	1228	29	61	2813	1285	12	
4550	2819	5432	11894	696	6934	2618	1677	2817	3670	997	483	11182	5733	13	
3072	70	85	37	11	181	45	64	1006	882	108	20	3307	1674	14	
3717	490	7424	1776	91	1825	696	582	3966	1958	2782	346	7891	3570	15	
836	119	177	22	88	492	222	244	1294	1049	87	70	4892	2525	16	
6269	1110	2195	749	132	3254	2754	12234	4237	20133	986	479	8063	4134	17	
98	3	0	5	4	36	1	84	341	213	18	1	2397	766	18	
4175	1904	3968	4703	254	6374	1604	5466	4696	1845	2628	1319	6122	3161	19	
1959	245	9	5	2	142	341	117	401	6	21	1	1694	628	20	
2008	410	452	709	92	1417	519	324	2664	1868	240	289	10409	4808	21	
<b>20015</b>	<b>3033</b>	<b>9087</b>	<b>7111</b>	<b>622</b>	<b>11161</b>	<b>6926</b>	<b>17446</b>	<b>38506</b>	<b>40882</b>	<b>5845</b>	<b>2658</b>	<b>96892</b>	<b>43243</b>	<b>22</b>	
<b>1642</b>	<b>209</b>	<b>240</b>	<b>337</b>	<b>15</b>	<b>470</b>	<b>223</b>	<b>1581</b>	<b>3592</b>	<b>3484</b>	<b>341</b>	<b>172</b>	<b>8708</b>	<b>3927</b>	<b>23</b>	
118	45	22	46	0	85	11	207	480	481	37	29	1489	717	24	
422	38	8	34	1	120	23	162	751	465	58	43	1472	702	25	
221	7	26	31	0	36	52	221	531	346	38	21	1663	747	26	
880	118	185	227	14	230	138	991	1831	2192	208	79	4084	1761	27	
<b>2439</b>	<b>355</b>	<b>692</b>	<b>674</b>	<b>7</b>	<b>745</b>	<b>713</b>	<b>2147</b>	<b>4891</b>	<b>5827</b>	<b>579</b>	<b>195</b>	<b>12695</b>	<b>5380</b>	<b>28</b>	
75	3	10	22	0	35	3	38	413	241	18	2	802	311	29	
124	3	24	12	0	10	81	71	387	316	68	6	584	205	30	
532	226	129	152	6	144	64	517	991	1353	162	45	1897	797	31	
68	19	43	27	0	26	4	121	355	245	43	3	764	243	32	
192	26	23	21	0	62	12	160	503	732	49	20	1535	648	33	
19	0	2	2	0	0	2	48	106	106	4	9	...	...	34	
1407	78	456	431	1	456	543	1102	1939	2589	223	91	6596	2949	35	
21	0	4	8	0	14	3	90	197	245	12	19	516	227	36	
<b>6929</b>	<b>1577</b>	<b>6011</b>	<b>4667</b>	<b>375</b>	<b>6540</b>	<b>3958</b>	<b>6706</b>	<b>14698</b>	<b>15825</b>	<b>2997</b>	<b>1342</b>	<b>45151</b>	<b>20935</b>	<b>37</b>	
5109	1261	5693	4106	358	5781	3509	5273	10103	12621	2635	1195	28919	13788	38	
5016	1222	5661	4084	356	5663	3495	5244	9706	10528	2408	1187	28919	13788	39	
92	39	32	21	2	119	15	29	397	2093	226	8	...	...	40	
66	10	14	1	0	20	11	80	245	133	9	5	656	282	41	
483	57	86	358	4	118	83	259	868	587	88	26	3102	1330	42	
72	10	22	17	2	12	14	70	245	148	11	5	1125	494	43	
58	1	2	16	0	36	6	91	178	141	14	8	1422	600	44	
288	73	29	48	0	253	89	253	711	478	59	30	1736	775	45	
345	84	82	57	11	130	41	248	897	915	111	30	3036	1505	46	
193	49	40	15	0	59	16	135	428	242	20	7	1306	531	47	
101	5	11	10	0	40	2	79	216	155	25	10	999	456	48	
67	18	10	2	0	7	181	50	209	63	1	9	...	...	49	
87	8	24	25	0	78	4	119	354	253	10	9	2188	894	50	
61	0	0	13	0	4	1	48	245	88	13	8	662	280	51	

**Employees by  
- annual**
**Republic of Serbia**

Row no.	Region Area City - Municipality	Total	Employees at legal entities								
			All	where of: women	Agriculture, forestry and fishing	Mining and quarrying	Manufacturing	Electricity, gas, steam and air conditioning supply	Water supply; sewerage, waste management and remediation activities	Construction	Wholesale and retail trade; repair of motor vehicles and motor cycles
<b>52</b>	<b>Severnobanatska oblast</b>	<b>31843</b>	<b>26353</b>	<b>11791</b>	<b>1175</b>	<b>258</b>	<b>9736</b>	<b>249</b>	<b>491</b>	<b>745</b>	<b>2928</b>
53	Ada	4033	2866	1293	171	0	1135	0	15	39	506
54	Kanjiža	4796	3928	1520	189	0	1171	38	30	320	460
55	Kikinda	14194	12229	5336	574	256	5108	123	200	290	1060
56	Novi Kneževac	2030	1815	943	108	1	825	0	73	23	32
57	Senta	5393	4455	2173	78	0	1187	87	132	66	796
58	Coka	1399	1061	525	56	0	307	0	42	8	73
<b>59</b>	<b>Severnobačka oblast</b>	<b>46067</b>	<b>39140</b>	<b>17891</b>	<b>2978</b>	<b>3</b>	<b>9862</b>	<b>431</b>	<b>763</b>	<b>1885</b>	<b>6727</b>
60	Bačka Topola	7000	6515	2635	1905	0	1859	37	89	83	643
61	Mali Idoš	1750	1239	521	299	0	345	0	29	10	135
62	Subotica	37316	31386	14734	774	3	7658	394	645	1791	5949
<b>63</b>	<b>Srednjobanatska oblast</b>	<b>38222</b>	<b>32804</b>	<b>15374</b>	<b>2273</b>	<b>627</b>	<b>10783</b>	<b>605</b>	<b>982</b>	<b>1093</b>	<b>2921</b>
64	Zitište	2817	2585	1159	495	0	1158	56	0	1	193
65	Zrenjanin	28833	24672	11697	1071	627	7713	513	760	989	2466
66	Nova Crnja	1136	934	441	73	0	249	18	28	1	81
67	Novi Bečej	3536	2923	1455	157	0	1303	9	128	86	122
68	Sečanj	1898	1689	623	477	0	362	10	67	16	57
<b>69</b>	<b>Sremska oblast</b>	<b>56756</b>	<b>44251</b>	<b>21110</b>	<b>2359</b>	<b>76</b>	<b>12527</b>	<b>714</b>	<b>1523</b>	<b>1923</b>	<b>5815</b>
70	Indija	8802	6172	3344	250	0	1934	103	257	157	822
71	Irig	1416	871	427	38	0	170	0	64	17	39
72	Pećinci	3015	2380	1051	171	0	953	22	13	13	266
73	Ruma	9310	7328	3078	346	0	2023	242	289	703	831
74	Sremska Mitrovica	16097	12671	6504	629	30	2898	281	372	582	1333
75	Stara Pazova	12402	10196	4814	231	47	3510	45	327	361	2029
76	Sid	5716	4634	1892	695	0	1040	22	201	89	494
<b>77</b>	<b>SRBIJA – JUG</b>	<b>712279</b>	<b>521338</b>	<b>234497</b>	<b>8805</b>	<b>11837</b>	<b>146880</b>	<b>15144</b>	<b>17470</b>	<b>23639</b>	<b>51482</b>
<b>78</b>	<b>Region Šumadije i Zapadne Srbije</b>	<b>405101</b>	<b>292282</b>	<b>133830</b>	<b>5434</b>	<b>5710</b>	<b>88148</b>	<b>6417</b>	<b>9930</b>	<b>13958</b>	<b>30317</b>
<b>79</b>	<b>Zlatiborska oblast</b>	<b>58591</b>	<b>44188</b>	<b>19345</b>	<b>1209</b>	<b>642</b>	<b>14288</b>	<b>1142</b>	<b>1590</b>	<b>3373</b>	<b>2913</b>
80	Arilje	4814	3562	1903	166	0	2344	28	123	32	118
81	Bajina Bašta	4177	2995	1074	29	3	654	312	156	485	82
82	Kosjerić	1816	1369	549	30	0	666	35	53	33	93
83	Nova Varoš	2430	1708	786	23	0	546	148	89	4	52
84	Požega	5703	4178	1741	44	7	1603	62	119	327	406
85	Priboj	4545	3403	1360	4	2	1484	148	95	28	157
86	Prijepolje	5708	3984	1705	194	0	865	49	134	449	357
87	Sjenica	4435	2728	1188	68	475	755	39	66	46	49
88	Užice	21392	17444	7678	142	150	4983	286	608	1898	1477
89	Čajetina	3571	2819	1361	510	5	388	35	149	71	123
<b>90</b>	<b>Kolubarska oblast</b>	<b>40065</b>	<b>25562</b>	<b>11893</b>	<b>744</b>	<b>1505</b>	<b>8259</b>	<b>437</b>	<b>863</b>	<b>1363</b>	<b>2084</b>
91	Valjevo	28503	17241	8576	141	58	6382	345	530	1127	1603
92	Lajkovac	2924	2449	677	13	1064	464	0	61	0	38
93	Ljig	1827	1297	595	28	275	284	0	59	18	85
94	Mionica	1882	1225	588	6	13	459	13	58	81	54
95	Osečina	1341	986	432	93	0	406	16	48	21	63
96	Ub	3587	2365	1024	463	95	263	63	106	118	240
<b>97</b>	<b>Mačvanska oblast</b>	<b>51203</b>	<b>38649</b>	<b>17814</b>	<b>773</b>	<b>594</b>	<b>9372</b>	<b>822</b>	<b>1294</b>	<b>2053</b>	<b>6048</b>
98	Bogatić	2677	1738	795	51	18	137	29	41	1	456
99	Vladimirci	2007	1715	964	175	23	634	22	40	24	123
100	Koceljeva	1796	1119	465	1	81	360	17	32	32	79
101	Krupanj	1561	1029	518	78	3	203	14	36	65	66
102	Loznica	14125	10430	5383	175	2	2758	323	407	516	1648
103	Ljubovija	2510	1597	644	25	311	455	19	42	58	63
104	Mali Zvornik	1516	993	417	53	140	50	83	65	21	65
105	Sabac	25010	20027	8627	214	16	4777	315	631	1335	3547

<sup>1)</sup> Source: Republic Institute for Health Insurance.

activity sections, 2012  
average -

(companies, enterprises, cooperatives, institutions and other organizations)

Transport and storage	Accommodation and food service activities	Information and communication	Financial and insurance activities	Real estate activities	Professional, scientific and technical activities	Administrative and support service activities	Public administration and defence; compulsory social security	Education	Human health and social work activities	Arts, entertainment and recreation	Other service activities	Entrepreneurs and their employees <sup>1)</sup>		Row no.
												All	where of: women	
<b>1435</b>	<b>146</b>	<b>307</b>	<b>202</b>	<b>18</b>	<b>495</b>	<b>318</b>	<b>1153</b>	<b>3149</b>	<b>3096</b>	<b>253</b>	<b>199</b>	<b>5490</b>	<b>2330</b>	<b>52</b>
94	7	33	22	0	35	67	95	297	307	24	20	1167	465	53
330	7	28	31	5	114	31	176	429	535	10	24	868	396	54
671	69	173	90	12	152	176	509	1344	1178	171	69	1965	862	55
71	5	15	5	0	24	9	68	188	351	8	11	215	83	56
234	37	57	41	0	136	18	233	668	592	37	55	938	400	57
36	20	1	13	1	34	18	72	223	132	3	20	338	123	58
<b>2748</b>	<b>375</b>	<b>882</b>	<b>477</b>	<b>59</b>	<b>1230</b>	<b>495</b>	<b>1499</b>	<b>3750</b>	<b>4010</b>	<b>537</b>	<b>428</b>	<b>6927</b>	<b>3110</b>	<b>59</b>
127	21	142	69	7	121	27	169	667	486	36	29	485	212	60
23	2	0	7	0	12	3	81	169	115	6	4	511	181	61
2599	352	740	402	51	1097	465	1250	2915	3409	495	396	5930	2717	62
<b>1613</b>	<b>166</b>	<b>331</b>	<b>297</b>	<b>115</b>	<b>755</b>	<b>279</b>	<b>1623</b>	<b>3835</b>	<b>3795</b>	<b>538</b>	<b>172</b>	<b>5418</b>	<b>2318</b>	<b>63</b>
42	5	15	6	0	17	44	109	295	128	15	5	232	102	64
1407	125	291	257	115	617	232	1186	2696	3004	481	122	4161	1794	65
43	0	3	5	0	8	1	114	211	84	11	4	202	95	66
86	23	8	21	0	99	2	113	322	394	23	30	613	235	67
35	12	14	8	0	14	1	101	312	185	8	11	209	93	68
<b>3209</b>	<b>206</b>	<b>623</b>	<b>455</b>	<b>34</b>	<b>925</b>	<b>939</b>	<b>2737</b>	<b>4591</b>	<b>4845</b>	<b>600</b>	<b>149</b>	<b>12505</b>	<b>5242</b>	<b>69</b>
335	23	66	62	0	130	89	190	668	816	255	16	2630	1054	70
29	35	12	7	0	17	19	72	98	237	12	4	545	237	71
186	4	84	11	4	44	1	106	269	221	8	3	635	296	72
673	24	101	75	15	118	18	309	844	637	58	20	1982	861	73
779	67	175	161	7	280	99	1490	1413	1847	175	56	3426	1371	74
753	48	63	100	7	174	668	296	780	678	42	38	2206	983	75
453	5	123	39	1	163	46	275	519	407	49	12	1082	439	76
<b>29195</b>	<b>7017</b>	<b>7263</b>	<b>7997</b>	<b>599</b>	<b>10395</b>	<b>5092</b>	<b>29956</b>	<b>65448</b>	<b>72787</b>	<b>6602</b>	<b>3730</b>	<b>190941</b>	<b>80933</b>	<b>77</b>
<b>16602</b>	<b>4327</b>	<b>4204</b>	<b>4723</b>	<b>221</b>	<b>5789</b>	<b>2346</b>	<b>15678</b>	<b>34790</b>	<b>38267</b>	<b>3695</b>	<b>1728</b>	<b>112819</b>	<b>48121</b>	<b>78</b>
<b>2234</b>	<b>1132</b>	<b>509</b>	<b>508</b>	<b>10</b>	<b>660</b>	<b>228</b>	<b>2080</b>	<b>5195</b>	<b>5592</b>	<b>726</b>	<b>154</b>	<b>14403</b>	<b>5965</b>	<b>79</b>
16	39	8	23	0	52	5	60	378	150	16	3	1252	601	80
96	104	5	7	0	48	42	93	395	249	231	4	1182	442	81
52	7	8	5	0	32	8	58	169	109	6	3	447	159	82
21	41	11	14	0	16	5	119	319	277	22	1	722	248	83
240	58	23	23	0	58	14	283	510	379	14	9	1525	589	84
174	62	15	24	2	55	7	108	445	554	32	9	1142	462	85
194	46	12	36	0	24	26	293	674	599	19	12	1724	615	86
50	22	53	0	0	57	20	123	600	249	30	27	1707	953	87
1366	121	373	374	9	289	95	843	1434	2644	270	84	3948	1593	88
26	633	1	0	0	32	5	99	270	382	86	2	752	303	89
<b>1168</b>	<b>388</b>	<b>287</b>	<b>233</b>	<b>51</b>	<b>483</b>	<b>165</b>	<b>1624</b>	<b>2630</b>	<b>2885</b>	<b>223</b>	<b>172</b>	<b>14503</b>	<b>6391</b>	<b>90</b>
788	246	207	200	50	302	142	1151	1500	2181	150	136	11262	5072	91
168	5	20	1	1	53	3	143	220	169	12	12	475	239	92
35	60	18	5	0	26	5	78	194	107	10	11	530	230	93
26	74	10	7	0	37	6	78	179	115	8	2	657	266	94
17	1	13	5	0	12	4	60	119	92	14	4	355	107	95
133	1	19	16	0	53	5	115	417	220	29	7	1222	477	96
<b>3128</b>	<b>225</b>	<b>420</b>	<b>439</b>	<b>35</b>	<b>902</b>	<b>321</b>	<b>2016</b>	<b>4714</b>	<b>4979</b>	<b>323</b>	<b>192</b>	<b>12554</b>	<b>4894</b>	<b>97</b>
99	6	13	13	0	85	9	123	369	273	9	5	939	298	98
131	8	4	4	0	20	3	77	253	153	15	6	292	99	99
73	0	4	10	0	29	2	61	205	123	8	2	677	291	100
32	23	5	8	0	13	2	81	276	111	10	1	532	163	101
447	89	111	138	1	192	90	527	1213	1682	79	32	3695	1406	102
123	3	7	0	0	37	2	81	209	145	6	11	913	347	103
50	13	7	6	0	24	2	64	224	111	10	4	523	162	104
2172	83	269	260	34	501	212	1003	1963	2380	185	130	4983	2129	105

**Employees by  
- annual**
**Republic of Serbia**

Row no.	Region Area City - Municipality	Total	Employees at legal entities								
			All	where of: women	Agriculture, forestry and fishing	Mining and quarrying	Manufacturing	Electricity, gas, steam and air conditioning supply	Water supply; sewerage, waste management and remediation activities	Construction	Wholesale and retail trade; repair of motor vehicles and motor cycles
<b>106</b>	<b>Moravička oblast</b>	<b>48301</b>	<b>35169</b>	<b>16568</b>	<b>578</b>	<b>487</b>	<b>13678</b>	<b>539</b>	<b>835</b>	<b>1097</b>	<b>4229</b>
107	Gornji Milanovac	10439	8117	3823	56	440	3543	59	216	115	736
108	Ivanjica	6972	4981	2520	264	0	2405	50	80	293	217
109	Lučani	3664	3144	1184	84	1	2015	53	0	83	136
110	Cačak	27226	18927	9040	173	46	5716	378	540	604	3140
<b>111</b>	<b>Pomoravska oblast</b>	<b>45349</b>	<b>31096</b>	<b>13784</b>	<b>436</b>	<b>1057</b>	<b>9079</b>	<b>607</b>	<b>1119</b>	<b>854</b>	<b>3081</b>
112	Despotovac	4156	3077	958	83	1010	296	23	128	51	154
113	Jagodina	18351	11702	5362	160	10	4295	220	358	379	902
114	Paraćin	10988	7986	3410	90	0	3131	91	212	155	1071
115	Rekovac	1265	934	395	6	26	170	25	57	0	31
116	Svilajnac	3940	2558	1169	41	3	267	178	161	73	539
117	Cuprija	6649	4838	2488	55	9	921	69	203	196	383
<b>118</b>	<b>Rasinska oblast</b>	<b>43887</b>	<b>32973</b>	<b>14968</b>	<b>598</b>	<b>233</b>	<b>11630</b>	<b>814</b>	<b>1174</b>	<b>1291</b>	<b>2970</b>
119	Aleksandrovac	4935	3161	1300	108	0	1490	30	141	103	199
120	Brus	2650	1767	1029	49	3	800	26	82	16	37
121	Varvarin	1919	949	483	28	5	169	15	46	4	66
122	Kruševac	24405	19597	8917	225	222	5198	564	665	1128	2194
123	Trstenik	8534	6479	2778	163	0	3510	168	203	27	416
124	Čičevac	1443	1019	461	25	2	463	10	37	14	58
<b>125</b>	<b>Raška oblast</b>	<b>54277</b>	<b>37458</b>	<b>16171</b>	<b>884</b>	<b>868</b>	<b>7039</b>	<b>869</b>	<b>1562</b>	<b>2616</b>	<b>4028</b>
126	Vrnjačka Banja	6020	4030	2005	177	0	843	61	249	304	340
127	Kraljevo	25197	17957	7573	526	24	3725	497	664	1485	1787
128	Novi Pazar	15359	10232	4568	37	207	1829	182	464	633	1562
129	Raška	4645	3202	1171	72	587	392	101	147	75	219
130	Tutin	3056	2037	854	72	48	250	28	39	119	121
<b>131</b>	<b>Šumadijska oblast</b>	<b>63426</b>	<b>47186</b>	<b>23287</b>	<b>212</b>	<b>326</b>	<b>14802</b>	<b>1186</b>	<b>1493</b>	<b>1312</b>	<b>4964</b>
132	Arandjelovac	10624	7519	3443	22	222	2963	88	275	167	894
133	Batočina	1961	1387	726	12	82	471	62	91	117	130
134	Knić	1475	965	429	4	0	318	24	17	2	78
135	Kragujevac	40755	30714	15076	108	11	7494	930	908	978	3290
136	Lapovo	1789	1330	434	1	1	352	0	83	7	85
137	Rača	3817	3337	2210	41	0	2736	29	26	21	79
138	Topola	3007	1935	967	25	10	469	54	94	18	407
<b>139</b>	<b>Region Južne i Istočne Srbije</b>	<b>307178</b>	<b>229056</b>	<b>100667</b>	<b>3371</b>	<b>6128</b>	<b>58733</b>	<b>8727</b>	<b>7540</b>	<b>9681</b>	<b>21165</b>
<b>140</b>	<b>Borska oblast</b>	<b>27453</b>	<b>22406</b>	<b>8858</b>	<b>286</b>	<b>3109</b>	<b>4837</b>	<b>1469</b>	<b>794</b>	<b>451</b>	<b>1419</b>
141	Bor	12014	10513	3867	52	2156	2325	416	458	163	357
142	Kladovo	4487	3818	1537	64	2	1232	594	66	10	476
143	Majdanpek	4554	3622	1400	69	944	1105	103	54	69	64
144	Negotin	6398	4453	2054	101	7	174	356	216	209	521
<b>145</b>	<b>Braničevska oblast</b>	<b>36595</b>	<b>24476</b>	<b>10391</b>	<b>562</b>	<b>422</b>	<b>3321</b>	<b>4032</b>	<b>752</b>	<b>1195</b>	<b>2991</b>
146	Grad Požarevac	22574	16334	6502	226	43	2350	3906	480	859	1824
147	Požarevac	17033	10793	5380	218	43	1555	295	480	858	1804
148	Kostolac	5541	5541	1122	7	0	795	3611	0	1	20
149	Veliko Gradište	2292	1234	577	27	2	189	22	7	116	140
150	Golubac	1032	590	276	53	78	47	11	40	5	39
151	Zabari	1154	765	296	13	0	325	0	0	18	60
152	Zagubica	1536	1029	373	78	271	54	23	48	46	51
153	Kučevo	2211	1225	571	103	1	178	33	48	39	86
154	Malo Crniče	1166	653	334	15	0	3	0	0	87	218
155	Petrovac na Mlavi	4629	2646	1460	48	27	176	37	129	25	573
<b>156</b>	<b>Zaječarska oblast</b>	<b>22777</b>	<b>16322</b>	<b>7041</b>	<b>450</b>	<b>1467</b>	<b>3184</b>	<b>350</b>	<b>674</b>	<b>635</b>	<b>1202</b>
157	Boljevac	1794	1350	479	90	312	262	19	90	8	56
158	Zaječar	12071	8812	3785	222	574	1304	236	293	483	813
159	Knjaževac	5822	3977	1979	86	1	1584	62	166	131	243
160	Sokobanja	3090	2183	798	53	580	34	32	126	13	89

<sup>1)</sup> Source: Republic Institute for Health Insurance.

**activity sections, 2012**  
**average -**

(companies, enterprises, cooperatives, institutions and other organizations)													Entrepreneurs and their employees <sup>1)</sup>		Row no.
Transport and storage	Accommodation and food service activities	Information and communication	Financial and insurance activities	Real estate activities	Professional, scientific and technical activities	Administrative and support service activities	Public administration and defence; compulsory social security	Education	Human health and social work activities	Arts, entertainment and recreation	Other service activities	All	where of: women		
<b>1820</b>	<b>309</b>	<b>529</b>	<b>1018</b>	<b>14</b>	<b>741</b>	<b>318</b>	<b>1248</b>	<b>3378</b>	<b>3841</b>	<b>401</b>	<b>109</b>	<b>13132</b>	<b>5991</b>	<b>106</b>	
197	80	145	553	0	190	23	215	664	816	52	18	2322	1064	107	
277	20	20	25	0	40	97	125	547	490	13	16	1991	749	108	
74	36	11	1	0	27	9	75	299	223	14	3	520	202	109	
1273	172	353	439	14	483	189	833	1868	2312	322	72	8299	3977	110	
<b>1784</b>	<b>334</b>	<b>507</b>	<b>197</b>	<b>18</b>	<b>684</b>	<b>368</b>	<b>1871</b>	<b>3704</b>	<b>4723</b>	<b>490</b>	<b>184</b>	<b>14253</b>	<b>5533</b>	<b>111</b>	
177	214	52	11	0	51	12	119	316	336	39	7	1079	495	112	
503	60	224	102	15	311	294	698	1232	1575	325	39	6649	2358	113	
692	4	97	37	2	136	44	458	855	815	44	53	3002	1137	114	
134	1	3	9	0	25	3	65	230	132	16	1	331	133	115	
102	18	45	16	1	51	11	158	463	348	14	68	1382	601	116	
175	38	87	23	0	109	4	373	609	1516	52	16	1811	809	117	
<b>1527</b>	<b>314</b>	<b>464</b>	<b>406</b>	<b>17</b>	<b>666</b>	<b>175</b>	<b>1909</b>	<b>3865</b>	<b>4090</b>	<b>402</b>	<b>430</b>	<b>10914</b>	<b>4719</b>	<b>118</b>	
94	16	25	17	0	79	4	120	426	269	26	12	1774	571	119	
53	32	34	16	0	15	8	82	300	198	12	4	883	364	120	
26	24	9	10	0	48	3	82	246	138	29	0	970	407	121	
1149	150	326	308	17	390	101	1326	2140	2921	286	289	4808	2268	122	
155	71	57	47	0	125	52	220	660	453	29	124	2055	897	123	
50	22	14	7	0	8	6	78	94	110	20	0	424	212	124	
<b>2730</b>	<b>1016</b>	<b>712</b>	<b>349</b>	<b>59</b>	<b>699</b>	<b>206</b>	<b>2299</b>	<b>5470</b>	<b>5448</b>	<b>414</b>	<b>190</b>	<b>16819</b>	<b>7398</b>	<b>125</b>	
65	363	78	25	16	137	16	173	440	689	23	29	1990	876	126	
1895	235	331	192	41	343	98	967	2240	2594	198	115	7240	3528	127	
408	130	198	124	2	137	86	843	1786	1463	101	41	5127	1914	128	
316	282	78	8	0	64	3	189	320	275	69	5	1443	689	129	
47	5	25	0	0	18	3	127	685	427	23	0	1019	390	130	
<b>2210</b>	<b>609</b>	<b>777</b>	<b>1573</b>	<b>18</b>	<b>954</b>	<b>567</b>	<b>2632</b>	<b>5832</b>	<b>6709</b>	<b>715</b>	<b>297</b>	<b>16240</b>	<b>7230</b>	<b>131</b>	
210	286	66	49	0	146	83	218	781	918	95	35	3105	1447	132	
25	0	10	16	0	6	2	46	149	141	19	6	574	233	133	
79	0	8	6	1	29	2	73	204	115	6	0	510	212	134	
1271	281	666	1479	17	714	409	2117	4104	5149	575	215	10041	4525	135	
529	7	0	5	0	13	25	28	89	93	8	2	459	213	136	
15	1	7	7	0	18	1	63	180	104	2	4	480	179	137	
78	32	18	12	0	28	42	87	323	191	10	35	1072	419	138	
<b>12593</b>	<b>2690</b>	<b>3059</b>	<b>3275</b>	<b>378</b>	<b>4607</b>	<b>2746</b>	<b>14277</b>	<b>30658</b>	<b>34520</b>	<b>2907</b>	<b>2003</b>	<b>78122</b>	<b>32811</b>	<b>139</b>	
<b>1027</b>	<b>242</b>	<b>199</b>	<b>537</b>	<b>17</b>	<b>545</b>	<b>398</b>	<b>1184</b>	<b>2402</b>	<b>3023</b>	<b>373</b>	<b>96</b>	<b>5047</b>	<b>2105</b>	<b>140</b>	
582	49	143	174	4	382	345	385	977	1323	184	39	1501	634	141	
82	75	19	12	2	65	10	171	351	555	23	7	669	275	142	
96	105	11	5	0	21	17	132	352	349	94	32	932	379	143	
267	12	27	346	11	76	27	496	722	796	71	17	1945	817	144	
<b>952</b>	<b>362</b>	<b>221</b>	<b>174</b>	<b>2</b>	<b>358</b>	<b>250</b>	<b>1830</b>	<b>2892</b>	<b>3463</b>	<b>216</b>	<b>483</b>	<b>12119</b>	<b>4936</b>	<b>145</b>	
614	277	186	150	2	175	209	1261	1318	1916	120	420	6240	2687	146	
312	77	186	150	2	175	194	1258	1087	1916	115	67	6240	2687	147	
303	200	0	0	0	0	15	2	230	0	5	353	...	...	148	
87	25	1	16	1	29	8	100	252	176	25	11	1058	447	149	
14	21	0	0	0	18	0	54	123	73	6	8	442	143	150	
23	8	1	0	0	19	0	52	140	102	5	1	389	148	151	
28	3	5	0	0	15	3	79	167	146	1	11	507	203	152	
76	12	0	0	0	22	0	97	286	197	19	28	986	353	153	
18	0	0	0	0	14	0	45	173	74	5	0	513	180	154	
92	16	27	8	0	65	30	140	434	778	36	3	1983	775	155	
<b>754</b>	<b>270</b>	<b>215</b>	<b>161</b>	<b>11</b>	<b>292</b>	<b>168</b>	<b>1154</b>	<b>2058</b>	<b>2965</b>	<b>224</b>	<b>89</b>	<b>6455</b>	<b>2769</b>	<b>156</b>	
17	2	1	8	0	4	3	73	223	174	3	6	444	217	157	
559	47	153	113	9	117	116	823	1068	1648	175	59	3259	1245	158	
93	33	48	27	2	131	28	163	547	576	36	18	1845	937	159	
84	187	13	12	0	40	22	95	221	567	9	6	907	370	160	

**Employees by  
- annual**
**Republic of Serbia**

Row no.	Region Area City - Municipality	Total	Employees at legal entities								
			All	where of: women	Agriculture, forestry and fishing	Mining and quarrying	Manufacturing	Electricity, gas, steam and air conditioning supply	Water supply; sewerage, waste management and remediation activities	Construction	Wholesale and retail trade; repair of motor vehicles and motor cycles
<b>161</b>	<b>Jablanička oblast</b>	<b>36850</b>	<b>23643</b>	<b>11567</b>	<b>340</b>	<b>314</b>	<b>5367</b>	<b>445</b>	<b>1008</b>	<b>1007</b>	<b>2468</b>
162	Bojnik	1246	762	358	21	2	55	14	45	12	49
163	Vlasotince	5627	3034	1688	27	3	1123	31	140	212	324
164	Lebane	2492	1337	642	32	5	216	25	71	10	86
165	Leskovac	25400	17018	8334	207	0	3920	356	698	639	1997
166	Medveđa	1348	1125	420	25	304	35	14	48	8	11
167	Crna Trava	735	366	126	28	0	17	4	5	127	1
<b>168</b>	<b>Nišavska oblast</b>	<b>75464</b>	<b>59165</b>	<b>26858</b>	<b>329</b>	<b>321</b>	<b>11200</b>	<b>1016</b>	<b>2074</b>	<b>2953</b>	<b>6764</b>
169	Grad Niš	61806	49654	22376	151	19	8261	897	1708	2714	6025
170	Medijana	38131	33201	16014	79	16	2545	815	1285	1657	3904
171	Niška Banja	2242	1534	664	1	2	636	20	4	58	64
172	Pailula	10398	7166	2489	21	0	2694	0	376	569	874
173	Pantelej	4140	2177	992	26	0	627	1	1	217	451
174	Crveni krst	6894	5577	2216	24	0	1758	61	42	212	734
175	Aleksinac	6292	4937	2539	93	298	1490	56	277	89	266
176	Gadžin Han	1639	746	308	2	2	162	10	2	81	166
177	Doljevac	1513	830	375	6	3	113	6	1	16	57
178	Merošina	1316	1009	450	10	0	353	14	21	0	90
179	Ražanj	771	514	225	50	0	83	10	18	0	27
180	Svrljig	2126	1475	586	17	0	739	24	47	52	132
<b>181</b>	<b>Pirotska oblast</b>	<b>19445</b>	<b>14851</b>	<b>6537</b>	<b>185</b>	<b>61</b>	<b>6206</b>	<b>293</b>	<b>341</b>	<b>386</b>	<b>740</b>
182	Babušnica	1937	1489	688	14	0	749	26	60	14	65
183	Bela Palanka	1836	1142	505	7	51	323	23	46	44	39
184	Dimitrovgrad	1911	1350	604	6	4	192	23	23	36	62
185	Pirot	13761	10870	4740	158	7	4942	220	212	292	575
<b>186</b>	<b>Podunavska oblast</b>	<b>36596</b>	<b>26947</b>	<b>10853</b>	<b>280</b>	<b>44</b>	<b>9963</b>	<b>397</b>	<b>724</b>	<b>1812</b>	<b>2619</b>
187	Velika Plana	7212	4449	1686	98	40	440	64	16	1075	1010
188	Smederevo	21228	16138	6357	118	4	7420	259	485	398	1147
189	Smederevska Palanka	8157	6361	2811	64	0	2103	74	223	340	463
<b>190</b>	<b>Pčinjska oblast</b>	<b>36667</b>	<b>29101</b>	<b>12562</b>	<b>592</b>	<b>387</b>	<b>10344</b>	<b>560</b>	<b>761</b>	<b>919</b>	<b>2311</b>
191	Grad Vranje	20066	17028	7723	186	281	7275	236	326	447	1567
192	Vranje	18956	15918	7353	127	7	6753	236	326	417	1547
193	Vranjska Banja	1110	1110	371	60	275	522	0	0	29	20
194	Bosilegrad	1224	818	358	17	86	98	28	35	41	64
195	Bujanovac	5033	4081	1604	204	15	1462	46	95	100	235
196	Vladičin Han	3052	1927	863	81	0	514	40	121	83	116
197	Preševo	2857	2164	674	0	4	314	19	55	53	169
198	Surdulica	3493	2358	1062	92	0	402	182	104	193	128
199	Trgovište	941	724	278	11	2	278	10	23	4	31
<b>200</b>	<b>Toplička oblast</b>	<b>15328</b>	<b>12142</b>	<b>5999</b>	<b>347</b>	<b>1</b>	<b>4310</b>	<b>164</b>	<b>412</b>	<b>321</b>	<b>650</b>
201	Blace	1798	1328	587	31	0	408	19	57	159	82
202	Zitораđa	1213	880	364	83	1	184	13	20	1	29
203	Kuršumlija	3450	2618	1078	143	0	941	32	89	41	189
204	Prokuplje	8868	7317	3970	91	1	2777	100	247	121	352
<b>205</b>	<b>Region Kosovo i Metohija</b>	...	...	...	...	...	...	...	...	...	...

<sup>1)</sup> Source: Republic Institute for Health Insurance.



**activity sections, 2012**  
**average -**

(companies, enterprises, cooperatives, institutions and other organizations)

Transport and storage	Accommodation and food service activities	Information and communication	Financial and insurance activities	Real estate activities	Professional, scientific and technical activities	Administrative and support service activities	Public administration and defence; compulsory social security	Education	Human health and social work activities	Arts, entertainment and recreation	Other service activities	Entrepreneurs and their employees <sup>1)</sup>		Row no.
												All	where of: women	
<b>982</b>	<b>276</b>	<b>255</b>	<b>250</b>	<b>0</b>	<b>266</b>	<b>166</b>	<b>1833</b>	<b>4297</b>	<b>3780</b>	<b>351</b>	<b>239</b>	<b>13207</b>	<b>5106</b>	<b>161</b>
25	1	2	1	0	28	2	95	224	167	19	0	484	180	162
48	1	17	13	0	17	5	164	531	334	33	9	2593	945	163
58	10	12	15	0	42	19	120	378	223	10	7	1155	466	164
839	126	206	220	0	175	139	1287	2820	2893	279	219	8382	3361	165
9	134	18	0	0	4	1	115	263	124	8	2	223	88	166
3	4	0	2	0	0	0	52	79	38	2	2	369	65	167
<b>5190</b>	<b>903</b>	<b>1455</b>	<b>981</b>	<b>226</b>	<b>1791</b>	<b>948</b>	<b>3549</b>	<b>8011</b>	<b>10142</b>	<b>841</b>	<b>471</b>	<b>16299</b>	<b>7564</b>	<b>168</b>
4914	866	1412	952	225	1596	849	3031	6371	8487	747	431	12152	5975	169
4477	792	1262	771	128	1121	768	2307	3043	7298	600	330	4930	2488	170
0	9	17	1	0	15	1	33	178	489	4	0	708	381	171
120	62	36	98	4	258	52	576	1275	59	42	50	3232	1579	172
82	2	65	1	1	72	10	64	438	103	12	5	1963	917	173
235	1	32	80	92	130	17	50	1437	537	90	46	1317	610	174
66	11	29	21	0	54	13	224	862	1031	38	20	1355	610	175
15	0	1	0	0	19	3	55	120	87	15	8	893	312	176
84	0	2	0	0	17	76	55	227	142	18	4	683	211	177
48	18	0	0	0	56	4	64	162	153	15	0	307	89	178
25	4	1	3	1	20	1	61	108	95	3	4	257	106	179
38	2	10	6	0	30	2	59	162	147	5	4	651	262	180
<b>653</b>	<b>51</b>	<b>139</b>	<b>629</b>	<b>3</b>	<b>346</b>	<b>352</b>	<b>803</b>	<b>1597</b>	<b>1726</b>	<b>167</b>	<b>173</b>	<b>4594</b>	<b>1986</b>	<b>181</b>
21	0	0	5	0	64	2	61	265	130	8	5	448	182	182
31	21	12	7	0	47	71	63	210	137	6	4	694	327	183
215	0	18	4	0	10	135	210	153	193	8	56	561	242	184
387	30	108	613	3	225	145	469	968	1265	144	108	2891	1234	185
<b>1484</b>	<b>133</b>	<b>141</b>	<b>216</b>	<b>77</b>	<b>545</b>	<b>183</b>	<b>1236</b>	<b>3208</b>	<b>3380</b>	<b>279</b>	<b>224</b>	<b>9649</b>	<b>4136</b>	<b>186</b>
302	22	21	26	0	69	63	128	645	371	39	18	2763	866	187
856	70	99	140	77	321	64	853	1714	1766	154	193	5090	2603	188
325	40	21	50	1	156	55	254	849	1243	86	13	1796	668	189
<b>1225</b>	<b>443</b>	<b>324</b>	<b>206</b>	<b>1</b>	<b>303</b>	<b>198</b>	<b>1642</b>	<b>4437</b>	<b>3901</b>	<b>347</b>	<b>197</b>	<b>7566</b>	<b>2903</b>	<b>190</b>
781	324	198	147	1	213	141	909	1596	2131	154	111	3038	1344	191
781	321	197	147	1	206	141	895	1490	2062	154	111	3038	1344	192
0	3	1	0	0	7	0	14	106	69	0	0	...	...	193
16	0	10	1	0	11	3	79	178	107	34	11	406	169	194
96	21	42	28	0	33	15	208	852	524	56	47	952	258	195
132	54	14	7	0	19	6	113	375	209	36	6	1125	468	196
139	2	38	3	0	18	19	158	843	290	23	18	693	110	197
43	42	20	19	0	6	12	99	415	569	30	2	1135	484	198
19	0	1	1	0	3	2	78	178	71	12	1	217	68	199
<b>327</b>	<b>11</b>	<b>111</b>	<b>121</b>	<b>40</b>	<b>161</b>	<b>81</b>	<b>1049</b>	<b>1757</b>	<b>2141</b>	<b>108</b>	<b>31</b>	<b>3186</b>	<b>1307</b>	<b>200</b>
34	4	11	7	0	29	15	71	210	181	10	1	470	179	201
12	0	2	3	0	41	0	69	226	170	24	2	333	116	202
95	4	14	38	0	9	3	126	318	555	20	1	832	339	203
186	2	84	74	40	82	63	782	1002	1235	54	26	1551	673	204
...	...	...	...	...	...	...	...	...	...	...	...	...	...	<b>205</b>

## METHODOLOGICAL EXPLANATIONS

Data on employees in legal entities (companies, enterprises, cooperatives, institutions and other organizations) are obtained on the basis of regular Semi-annual survey on employees and their salaries and wages (RAD-1/P) and Survey on additional semi-annual report on employees and their salaries and wages that provided data on number of employees in small enterprises (up to 50 employees) that are not covered by regular semi-annual survey. These Surveys does not cover employees in the Ministry of Defense and Ministry of Interior.

Data on entrepreneurs (persons individually running business) and on their employees are provided by regular semi-annual report (RAD-15), from the Republic Fund for Health Insurance.

Annual average is calculated as arithmetic mean of number of employees, as of March 31st and September 30th.

Presentation of the data by activities is done in accordance with the Regulation on Classification of Activities („Official Gazette of RS“, No. 54/10), while territorial distribution was performed according to the Regulation on Nomenclature of Statistical Territorial Units („Official Gazette of RS“, No. 109/09 and 46/10).

Starting from 1999 the Statistical Office of the Republic of Serbia has not at disposal and may not provide available c certain data relative to AP Kosovo and Metohia and therefore these data are not included in the coverage for the Republic of Serbia (total).