

# STATISTICAL RELEASE

# IN10

Number 352 - Year LXII, 28.12.2012.

SERB352 IN10 281212

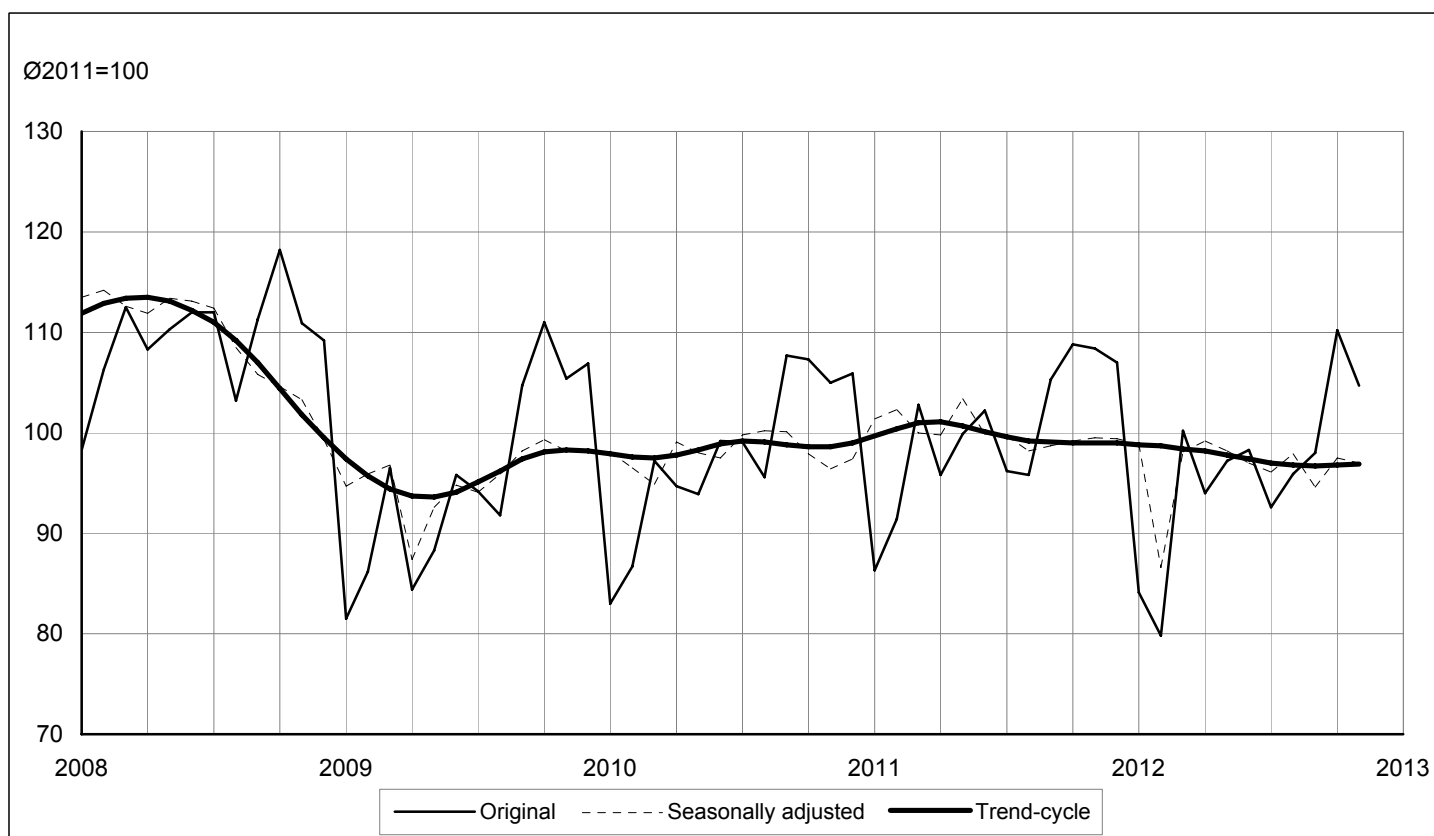
## Industry statistics

### Industrial production indices in the Republic of Serbia, November 2012 - Previous results -

Industrial production in the Republic of Serbia, in November 2012 was by 3,4% lower compared to November 2011 and was by 4,7% greater compared to 2011 average. Industrial production for January - November 2012, compared to the same period last year was by 3,3% lower.

Observed by sections, November 2012, compared to November 2011, in the mining and quarrying section increased by 0,8%, while the production in the manufacturing section saw a 0,6% fall, while the production in the section for electricity, gas, steam and air conditioning supply saw a 14,2% fall.

#### Industrial production, 2008 - 2012



Data in this Communication represent previous results and may undergo certain modifications.

Starting from 1999 the Statistical Office of the Republic of Serbia has not at disposal and may not provide available certain data relative to AP Kosovo and Metohia and therefore these data are not included in the coverage for the

## 1. Industrial production indices, by sections, MIGs and divisions, 2012

Republic of Serbia

	Ø2011=100			XI 2012	I-XI 2012
	X	XI	I-XI	XI 2011	I-XI 2011
<b>Industry total<sup>1)</sup></b>	<b>110,2</b>	<b>104,7</b>	<b>96,1</b>	<b>96,6</b>	<b>96,7</b>
<b>Energy</b>	<b>101,1</b>	<b>106,4</b>	<b>91,5</b>	<b>94,8</b>	<b>92,9</b>
<b>Intermediate goods, except energy</b>	<b>97,1</b>	<b>87,0</b>	<b>92,2</b>	<b>87,7</b>	<b>91,3</b>
<b>Capital goods</b>	<b>121,2</b>	<b>112,7</b>	<b>102,5</b>	<b>106,9</b>	<b>103,4</b>
<b>Durable consumer goods</b>	<b>135,7</b>	<b>118,5</b>	<b>107,1</b>	<b>110,1</b>	<b>108,8</b>
<b>Non-durable consumer goods</b>	<b>126,9</b>	<b>116,6</b>	<b>101,6</b>	<b>101,9</b>	<b>102,7</b>
<b>Mining and quarrying</b>	<b>104,6</b>	<b>109,0</b>	<b>97,1</b>	<b>100,8</b>	<b>98,0</b>
Mining of coal and lignite	99,9	107,2	91,8	99,4	92,9
Extraction of crude petroleum and natural gas	111,8	111,8	109,0	107,0	110,1
Mining of metal ores	124,1	148,6	119,7	148,7	122,6
Other mining and quarrying	111,3	84,7	96,7	68,0	94,8
<b>Manufacturing</b>	<b>114,1</b>	<b>105,7</b>	<b>97,4</b>	<b>99,4</b>	<b>97,7</b>
Manufacture of food products	133,0	111,3	101,3	92,8	101,6
Manufacture of beverages	94,5	84,6	103,4	105,4	103,8
Manufacture of tobacco products	115,5	125,9	91,9	69,8	92,2
Manufacture of textiles	118,0	115,1	98,5	107,0	99,5
Manufacture of wearing apparel	129,7	114,4	109,3	129,1	108,6
Manufacture of leather and related products	87,4	91,6	87,5	101,2	87,9
Manufacture of wood and of products of wood and cork, except furniture	130,9	156,0	122,4	145,3	125,0
Manufacture of paper and paper products	116,8	108,2	105,5	104,9	105,8
Printing and reproduction of recorded media	93,6	104,6	99,3	78,1	101,2
Manufacture of coke and refined petroleum products	118,6	137,4	88,7	138,0	90,6
Manufacture of chemicals and chemical products	79,4	66,9	81,6	66,0	80,6
Manufacture of basic pharmaceutical products and pharmaceutical preparations	144,2	161,6	101,3	156,0	105,7
Manufacture of rubber and plastic products	140,7	121,0	120,3	113,8	118,5
Manufacture of other non-metallic mineral products	114,6	92,0	95,6	93,2	93,3
Manufacture of basic metals	39,8	37,8	54,9	47,1	53,6
Manufacture of fabricated metal products, except machinery and equipment	128,0	122,2	111,7	114,4	112,6
Manufacture of computer, electronic and optical products	211,1	74,1	98,1	59,5	101,8
Manufacture of electrical equipment	107,8	101,2	99,2	86,5	99,6
Manufacture of machinery and equipment n.e.c.	78,8	82,6	104,4	102,0	102,2
Manufacture of motor vehicles, trailers and semi-trailers	176,5	218,5	110,4	274,2	107,2
Manufacture of other transport equipment	37,8	9,1	83,1	5,0	91,1
Manufacture of furniture	138,3	119,5	103,8	119,5	107,9
Other manufacturing	73,9	87,7	102,5	103,8	103,4
Repair and installation of machinery and equipment	98,4	78,2	89,1	93,5	88,6
<b>Electricity, gas, steam and air conditioning supply</b>	<b>97,3</b>	<b>99,8</b>	<b>90,9</b>	<b>85,8</b>	<b>92,3</b>
Electricity, gas, steam and air conditioning supply	97,3	99,8	90,9	85,8	92,3

<sup>1)</sup> The estimate of the industrial production of small-sized enterprises that are not covered by regular statistical surveys of industry was made for November 2012. The estimate was made on the basis of the sample. If the estimate of industrial production of small-sized enterprises is included, the industrial production index for November 2012/2011 average, for total industrial production stands at 103,6 and for manufacturing 104,1.

## 2. Seasonally adjusted industrial production indices

Republic of Serbia		Ø2011=100											
		I	II	III	IV	V	VI	VII	VIII	IX	X	XI	XII
		<b>Industry total</b>											
2011		101,5	102,3	100,1	100,0	103,6	100,0	100,0	97,4	99,4	98,8	99,6	99,1
2012		98,9	86,6	98,1	99,2	98,3	97,0	96,1	97,9	94,6	97,5	97,0	
		<b>Manufacturing</b>											
2011		104,5	103,1	100,0	99,5	101,7	100,5	102,9	97,2	99,6	98,3	97,2	97,6
2012		97,5	84,8	100,9	102,1	100,6	98,7	96,7	99,3	95,4	98,6	98,5	

### Industrial production indices<sup>1)</sup>

Industrial production index shows the percentage of decrease or increase in the quantities of produced manufactured products (services) on a selected territory. Hence, the index of industrial production presents trends of changes in industry development and the dynamics of its production in short time intervals.

There are two phases in the calculation of the index of production. In the first one, indices for groups and divisions are calculated on the basis of data on quantities, which are collected through the Monthly Survey on Industry, and on the basis of the weight by products (services).

Laspeyre's formula is used for the calculation. The quantities of products in the current and referent period are multiplied by weights of those products then those multiplication products are divided.

$$IFO_o = \frac{\sum q_1 k_0}{\sum q_0 k_0} * 100$$

IFO<sub>o</sub> – index of the physical volume of industrial production for divisions;

q<sub>1</sub> – quantity produced in the current period;

q<sub>0</sub> – quantity produced in the referent period;

k<sub>0</sub> – weights for the product in the referent period.

In the second phase, the index of the physical volume of industrial production for the overall industry, sections, sub-sections and MIGs is calculated on the basis of indices obtained for divisions and on the basis of the weight for divisions, the formula below being used for that purpose:

$$IFO = \frac{\sum I_i W_i}{\sum W_i}$$

IFO – index of the physical volume of industrial production;

I<sub>i</sub> – index of the physical volume of industrial production in a division;

W<sub>i</sub> – weight for the division from the referent period.

<sup>1)</sup>The methodology used to calculate the monthly index of industrial production is available on the website of the Statistical Office of the Republic of Serbia [www.stat.gov.rs](http://www.stat.gov.rs)

### 3. Industrial production indices, by sectors, MIGs and divisions, 2012

AP Vojvodina

	Ø2011=100			XI 2012	I-XI 2012
	X	XI	I-XI	XI 2011	I-XI 2011
<b>Industry total</b>	<b>126,8</b>	<b>118,6</b>	<b>100,0</b>	<b>103,1</b>	<b>100,9</b>
<b>Energy</b>	<b>111,1</b>	<b>124,6</b>	<b>92,9</b>	<b>104,2</b>	<b>95,6</b>
<b>Intermediate goods, except energy</b>	<b>105,0</b>	<b>93,4</b>	<b>94,5</b>	<b>84,7</b>	<b>94,8</b>
<b>Capital goods</b>	<b>98,3</b>	<b>90,0</b>	<b>106,7</b>	<b>102,2</b>	<b>104,4</b>
<b>Durable consumer goods</b>	<b>89,0</b>	<b>71,3</b>	<b>93,1</b>	<b>57,9</b>	<b>94,0</b>
<b>Non-durable consumer goods</b>	<b>144,6</b>	<b>131,5</b>	<b>101,6</b>	<b>107,9</b>	<b>103,1</b>
<b>Mining and quarrying</b>	<b>113,7</b>	<b>109,1</b>	<b>106,9</b>	<b>101,6</b>	<b>107,5</b>
Mining of coal and lignite	148,4	135,2	65,3	64,1	64,9
Extraction of crude petroleum and natural gas	111,7	111,8	108,8	107,1	109,9
Other mining and quarrying	126,8	50,5	98,4	50,7	92,7
<b>Manufacturing</b>	<b>128,5</b>	<b>120,2</b>	<b>99,8</b>	<b>106,7</b>	<b>100,5</b>
Manufacture of food products	157,8	123,8	102,7	90,6	103,4
Manufacture of beverages	76,3	76,7	100,2	110,0	99,2
Manufacture of tobacco products	88,9	111,8	79,0	67,1	78,3
Manufacture of textiles	139,1	136,2	114,5	122,4	115,0
Manufacture of wearing apparel	147,8	136,3	120,5	182,7	117,7
Manufacture of leather and related products	75,9	80,7	80,7	92,9	80,6
Manufacture of wood and of products of wood and cork, except furniture	85,8	118,4	96,7	129,0	96,1
Manufacture of paper and paper products	130,5	123,8	110,1	136,2	112,3
Printing and reproduction of recorded media	109,3	124,4	98,0	117,7	98,4
Manufacture of coke and refined petroleum products	120,1	139,6	88,8	140,6	90,8
Manufacture of chemicals and chemical products	55,8	49,7	63,9	46,6	63,6
Manufacture of basic pharmaceutical products and pharmaceutical preparations	143,5	169,1	101,2	157,7	106,0
Manufacture of rubber and plastic products	175,8	144,9	159,2	145,9	156,1
Manufacture of other non-metallic mineral products	128,8	94,0	97,6	103,2	94,5
Manufacture of basic metals	81,6	96,2	86,8	99,4	86,2
Manufacture of fabricated metal products, except machinery and equipment	150,6	149,7	124,6	123,1	126,4
Manufacture of computer, electronic and optical products	57,4	67,2	94,3	51,1	98,6
Manufacture of electrical equipment	96,7	89,9	82,5	65,9	83,3
Manufacture of machinery and equipment n.e.c.	59,3	51,2	104,0	142,2	97,9
Manufacture of motor vehicles, trailers and semi-trailers	115,0	104,0	102,2	100,8	99,2
Manufacture of other transport equipment	38,2	19,8	92,2	16,2	93,8
Manufacture of furniture	111,5	91,1	81,7	57,9	84,5
Other manufacturing	116,4	97,3	95,3	191,5	98,5
Repair and installation of machinery and equipment	140,1	139,1	123,0	122,1	123,4
<b>Electricity, gas, steam and air conditioning supply</b>	<b>7,6</b>	<b>4,4</b>	<b>86,3</b>	<b>1,2</b>	<b>101,9</b>
Electricity, gas, steam and air conditioning supply	7,6	4,4	86,3	1,2	101,9

Published and printed by: Statistical Office of the Republic of Serbia, Belgrade, 5, Milana Rakica St  
 Phone: +381-11/2412-922 (operator) • Fax:2411-260 • www.stat.gov.rs

Responsible: Director, Dragan Vukmirovic, PhD

Issued monthly