

# STATISTICAL RELEASE

# ZP21

Number 19 - Year LXII, 30.01.2012.

SERB019 ZP21 300112

## Statistics of employment and earnings

### Employees in the Republic of Serbia, 2011

- As of September 30th -

Total number of formally employed in September 2011 amounted to 1737585, presenting decrease of 1.0% in relation to March 2011. Number of employees in legal entities was 1336569 and relative to March, it is the decrease of 0.9%, while number of registered unincorporated enterprises and their employees in September amounted to 401016 and if compared to March, it is the decrease of 1.1%.

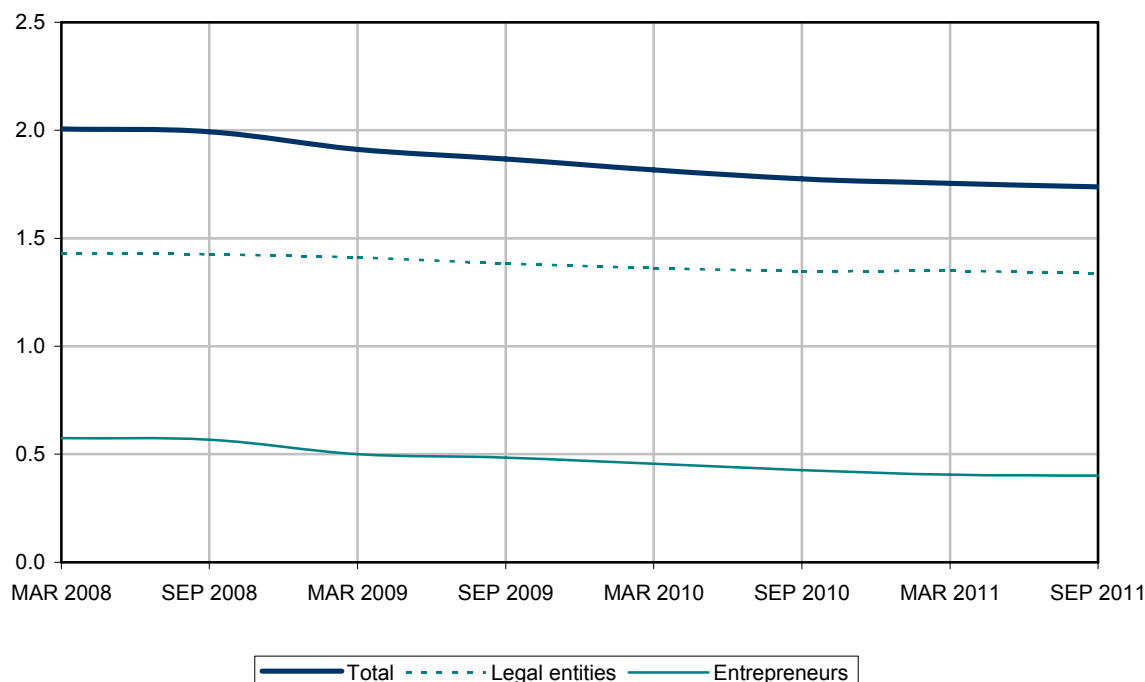
Expressed in percentages, the greatest decrease of employment in legal entities in September relative to March was noted in the following sections: Administration and support service activities (10.2%) and Professional, scientific and technical activities (3.8%), while the highest increase was recorded in the sections of Other service activities (2.7%) and Information and communication (2.6%).

In September, relative to March, the greatest decrease of the number of employees was noted in the section of Wholesale and retail trade; repair of motor vehicles and motorcycles (4379 persons), while the greatest increase was noted in the section of Information and communication (957 persons).

In the structure of number of employees in legal entities in September 2011, the greatest share was in the sections of Manufacturing (22.0%), Wholesale and retail trade; repair of motor vehicles and motorcycles (13.6%) and Human health and social work activities (12.1%).

### Employees - Republic of Serbia

Number of employees  
(mill.)



**Employees by  
- As of**

**Republic of Serbia**

Row no.	Region Area City - Municipality	Total	Employees at legal entities								
			All	where of: women	Agriculture, forestry and fishing	Mining and quarrying	Manufacturing	Electricity, gas, steam and air conditioning supply	Water supply; sewerage, waste management and remediation activities	Construction	Wholesale and retail trade; repair of motor vehicles and motor cycles
<b>1</b>	<b>REPUBLIC OF SERBIA</b>	<b>1737585</b>	<b>1336569</b>	<b>619428</b>	<b>34147</b>	<b>21991</b>	<b>294329</b>	<b>28014</b>	<b>32637</b>	<b>72063</b>	<b>181136</b>
<b>2</b>	<b>SERBIA - NORTH</b>	<b>1033878</b>	<b>812780</b>	<b>388199</b>	<b>25008</b>	<b>10254</b>	<b>147067</b>	<b>12949</b>	<b>15125</b>	<b>47384</b>	<b>128288</b>
<b>3</b>	<b>Belgrade</b>	<b>572398</b>	<b>457170</b>	<b>223800</b>	<b>4642</b>	<b>7932</b>	<b>55910</b>	<b>8311</b>	<b>7020</b>	<b>29655</b>	<b>80973</b>
<b>4</b>	<b>Belgrade</b>	<b>572398</b>	<b>457170</b>	<b>223800</b>	<b>4642</b>	<b>7932</b>	<b>55910</b>	<b>8311</b>	<b>7020</b>	<b>29655</b>	<b>80973</b>
5	Belgrade - Barajevo	3650	1694	879	15	0	198	0	89	255	267
6	Belgrade - Voždovac	42454	35160	15160	104	10	5862	558	68	4015	6228
7	Belgrade - Vračar	34649	27456	14002	188	16	2042	1038	2580	1540	4332
8	Belgrade - Grocka	10496	6215	3371	104	20	1234	40	316	399	1098
9	Belgrade - Zvezdara	37930	29359	13590	83	7	2969	50	1789	3121	5513
10	Belgrade - Zemun	50304	40692	20282	219	108	9077	721	29	2547	10820
11	Belgrade - Lazarevac	23118	20912	6549	17	7621	3319	599	712	2169	501
12	Belgrade - Mladenovac	9080	6357	2985	126	0	2283	58	215	123	491
13	Belgrade - Novi Beograd	91640	75605	36160	267	60	6827	2237	64	5192	20549
14	Belgrade - Obrenovac	13320	10221	3889	286	13	1126	2112	364	382	595
15	Belgrade - Palilula	56090	45095	20952	2514	44	6730	66	128	2926	7000
16	Belgrade - Rakovica	15643	9476	4882	61	17	2285	64	8	326	2269
17	Belgrade - Savski venac	75613	64310	38139	48	0	2915	1	36	3138	4460
18	Belgrade - Sopot	4508	1403	873	1	0	302	0	129	42	121
19	Belgrade - Stari grad	63504	53909	28511	87	2	4147	630	66	1271	9861
20	Belgrade - Surčin	8488	7142	2640	506	9	1354	0	11	142	1801
21	Belgrade - Čukarica	31911	22164	10936	16	5	3240	137	416	2067	5067
<b>22</b>	<b>Vojvodina</b>	<b>461480</b>	<b>355610</b>	<b>164399</b>	<b>20366</b>	<b>2322</b>	<b>91157</b>	<b>4638</b>	<b>8105</b>	<b>17729</b>	<b>47315</b>
<b>23</b>	<b>West Bačka</b>	<b>38407</b>	<b>28894</b>	<b>13401</b>	<b>3130</b>	<b>0</b>	<b>8075</b>	<b>312</b>	<b>727</b>	<b>811</b>	<b>3381</b>
24	Apatin	5851	4104	1870	395	0	1619	22	80	179	232
25	Kula	7673	5785	2481	715	0	1634	0	258	109	834
26	Odžaci	4893	3556	1498	607	0	1004	41	21	33	314
27	Sombor - city	19990	15449	7552	1413	0	3818	249	368	490	2001
<b>28</b>	<b>South Banat</b>	<b>57393</b>	<b>43125</b>	<b>18970</b>	<b>2906</b>	<b>334</b>	<b>13456</b>	<b>559</b>	<b>1520</b>	<b>1711</b>	<b>3410</b>
29	Alibunar	2333	1711	793	254	0	424	17	55	18	89
30	Bela Crkva	2345	1755	854	278	5	165	60	2	29	108
31	Vršac	12372	9675	4822	424	40	3451	56	451	273	795
32	Kovačica	2929	2289	911	366	0	711	5	53	29	185
33	Kovin	4818	3602	1543	279	110	864	51	151	177	172
34	Opovo	564	564	287	113	0	69	0	31	5	55
35	Pančevo - city	29928	21847	9035	761	179	7256	342	764	1122	1978
36	Plandište	2104	1682	725	431	0	516	28	13	58	28
<b>37</b>	<b>South Bačka</b>	<b>189433</b>	<b>141071</b>	<b>65730</b>	<b>5268</b>	<b>771</b>	<b>27541</b>	<b>1757</b>	<b>2128</b>	<b>9123</b>	<b>22301</b>
38	Bač	2193	1557	669	218	0	297	0	0	319	123
39	Bačka Palanka	12184	9499	3920	668	0	3935	37	265	342	1212
40	Bački Petrovac	2837	1925	947	391	0	577	0	52	53	230
41	Beočin	2851	1735	823	14	0	528	11	98	143	382
42	Bečej	7496	6033	2449	1123	126	1454	70	99	126	781
43	Vrbas	11677	7471	3483	448	0	2615	104	239	41	1060
44	Zabalj	3446	2366	1178	241	0	432	34	26	26	400
45	Novi Sad - city	135934	103215	49182	1452	644	15462	1428	1052	7785	17228
46	Srbobran	2295	1511	638	257	0	274	51	67	75	102
47	Sremski Karlovci	1152	1152	456	1	1	279	0	9	5	223
48	Temerin	5688	3463	1482	201	0	1491	22	175	165	443
49	Titel	1680	1144	503	254	0	197	0	46	43	117

<sup>1)</sup> Source: Republic Institute for Health Insurance. Data of entrepreneurs for municipalities Požarevac and Kostolac are estimated.

**activity sections, 2011**  
**September 30th -**

(companies, enterprises, cooperatives, institutions and other organizations)

Transport and storage	Accommodation and food service activities	Information and communication	Financial and insurance activities	Real estate activities	Professional, scientific and technical activities	Administrative and support service activities	Public administration and defence; compulsory social security	Education	Human health and social work activities	Arts, entertainment and recreation	Other service activities	Entrepreneurs and their employees <sup>1)</sup>		Row no.
												All	where of: women	
<b>86090</b>	<b>20272</b>	<b>38217</b>	<b>39173</b>	<b>3084</b>	<b>51230</b>	<b>27834</b>	<b>70915</b>	<b>137143</b>	<b>161412</b>	<b>22303</b>	<b>14579</b>	<b>401016</b>	<b>175226</b>	<b>1</b>
<b>55481</b>	<b>12757</b>	<b>30812</b>	<b>31378</b>	<b>2533</b>	<b>40968</b>	<b>22695</b>	<b>41872</b>	<b>73286</b>	<b>88490</b>	<b>15757</b>	<b>10676</b>	<b>221098</b>	<b>100200</b>	<b>2</b>
<b>34964</b>	<b>9570</b>	<b>22348</b>	<b>24001</b>	<b>1927</b>	<b>29840</b>	<b>14904</b>	<b>24600</b>	<b>35063</b>	<b>47552</b>	<b>10035</b>	<b>7923</b>	<b>115228</b>	<b>54348</b>	<b>3</b>
<b>34964</b>	<b>9570</b>	<b>22348</b>	<b>24001</b>	<b>1927</b>	<b>29840</b>	<b>14904</b>	<b>24600</b>	<b>35063</b>	<b>47552</b>	<b>10035</b>	<b>7923</b>	<b>115228</b>	<b>54348</b>	<b>4</b>
53	18	5	3	2	33	16	105	357	262	11	5	1956	892	5
866	607	969	434	41	3071	932	1783	3432	2646	360	3174	7294	3392	6
424	640	1086	3209	77	2815	1684	994	1357	1735	741	958	7193	3378	7
319	76	48	5	0	798	82	179	716	724	23	34	4281	1994	8
3999	442	873	396	154	2222	518	661	2477	3509	129	447	8571	4288	9
2014	615	614	296	147	2500	1029	319	3418	5198	696	325	9612	4548	10
643	572	41	30	0	214	2527	153	922	834	29	9	2206	952	11
464	30	13	144	0	107	71	169	742	1223	35	63	2723	1281	12
5084	2173	4384	11276	876	4779	2169	1732	2850	3440	1198	448	16035	7541	13
2835	63	83	37	10	198	20	186	1002	856	34	19	3099	1489	14
3722	463	7335	1868	80	1766	684	674	3999	2001	2772	323	10995	5189	15
754	114	132	18	21	497	216	235	1297	1015	84	63	6167	2926	16
6090	1056	2322	985	136	3078	2543	11828	4217	20033	962	462	11303	5381	17
99	1	0	5	0	47	2	85	334	218	17	0	3105	1411	18
3705	2034	3994	4601	290	6015	1516	4944	4821	1923	2700	1302	9595	4498	19
2035	245	3	10	4	153	334	107	394	9	23	2	1346	586	20
1858	421	446	684	89	1547	561	446	2728	1926	221	289	9747	4602	21
<b>20517</b>	<b>3187</b>	<b>8464</b>	<b>7377</b>	<b>606</b>	<b>11128</b>	<b>7791</b>	<b>17272</b>	<b>38223</b>	<b>40938</b>	<b>5722</b>	<b>2753</b>	<b>105870</b>	<b>45852</b>	<b>22</b>
<b>1668</b>	<b>312</b>	<b>251</b>	<b>360</b>	<b>13</b>	<b>473</b>	<b>206</b>	<b>1561</b>	<b>3570</b>	<b>3512</b>	<b>355</b>	<b>177</b>	<b>9513</b>	<b>4183</b>	<b>23</b>
118	47	17	51	0	90	11	196	490	490	39	28	1747	849	24
425	153	7	47	1	104	17	154	753	472	65	37	1888	777	25
226	12	27	40	0	29	50	220	523	341	37	31	1337	560	26
899	100	200	222	12	250	128	991	1804	2209	214	81	4541	1997	27
<b>2405</b>	<b>285</b>	<b>687</b>	<b>727</b>	<b>5</b>	<b>717</b>	<b>771</b>	<b>2195</b>	<b>4813</b>	<b>5799</b>	<b>602</b>	<b>223</b>	<b>14268</b>	<b>5613</b>	<b>28</b>
69	2	12	22	0	34	3	124	384	183	19	2	622	255	29
128	3	19	14	0	10	80	71	390	313	75	5	590	159	30
505	180	136	165	5	123	54	514	945	1347	157	54	2697	1012	31
66	19	43	27	0	23	3	121	371	222	40	5	640	180	32
189	17	21	25	0	61	15	158	501	730	58	23	1216	514	33
20	0	2	2	0	0	2	46	100	105	5	9	...	...	34
1407	64	450	464	0	454	610	1097	1920	2652	237	90	8081	3305	35
21	0	4	8	0	12	4	64	202	247	11	35	422	188	36
<b>7607</b>	<b>1669</b>	<b>5152</b>	<b>4778</b>	<b>373</b>	<b>6515</b>	<b>4429</b>	<b>6683</b>	<b>14699</b>	<b>15889</b>	<b>3018</b>	<b>1370</b>	<b>48362</b>	<b>22515</b>	<b>37</b>
67	15	13	1	0	18	7	75	247	138	11	8	636	246	38
500	59	88	335	4	146	94	269	868	568	84	25	2685	1165	39
79	4	21	15	1	10	13	71	238	152	12	6	912	409	40
63	1	3	12	0	33	5	101	176	146	8	11	1116	493	41
301	70	27	46	0	259	86	243	671	459	61	31	1463	668	42
326	85	69	57	22	137	35	259	917	900	122	35	4206	2186	43
205	63	30	16	0	58	12	125	422	245	22	9	1080	455	44
5738	1333	4857	4243	346	5720	3978	5251	10126	12720	2644	1208	32719	15391	45
104	0	11	12	0	48	2	79	232	157	32	8	784	364	46
73	32	7	2	0	8	190	48	200	62	2	10	...	...	47
87	7	26	25	0	75	5	117	352	251	10	11	2225	912	48
64	0	0	14	0	3	2	45	250	91	10	8	536	226	49

**Employees by  
- As of**

**Republic of Serbia**

Row no.	Region Area City - Municipality	Total	Employees at legal entities								
			All	where of: women	Agriculture, forestry and fishing	Mining and quarrying	Manufacturing	Electricity, gas, steam and air conditioning supply	Water supply; sewerage, waste management and remediation activities	Construction	Wholesale and retail trade; repair of motor vehicles and motor cycles
<b>50</b>	<b>North Banat</b>	<b>31980</b>	<b>26602</b>	<b>11789</b>	<b>1290</b>	<b>282</b>	<b>9710</b>	<b>252</b>	<b>472</b>	<b>857</b>	<b>2637</b>
51	Ada	3609	2512	1091	174	0	1132	0	10	35	180
52	Kanjiža	4715	4024	1594	212	0	1198	39	31	303	489
53	Kikinda	15272	12896	5653	668	282	5175	124	192	400	1119
54	Novi Kneževac	1818	1611	757	116	0	610	0	66	27	31
55	Senta	5097	4340	2097	64	0	1174	89	130	77	721
56	Coka	1469	1219	597	56	0	421	0	43	15	97
<b>57</b>	<b>North Bačka</b>	<b>48094</b>	<b>39910</b>	<b>18450</b>	<b>3057</b>	<b>3</b>	<b>10152</b>	<b>434</b>	<b>764</b>	<b>2017</b>	<b>6834</b>
58	Bačka Topola	7078	6583	2701	1927	0	1891	37	91	81	644
59	Mali Idoš	1727	1229	508	293	0	341	0	27	9	146
60	Subotica - city	39289	32098	15241	837	3	7920	397	646	1927	6044
<b>61</b>	<b>Central Banat</b>	<b>37719</b>	<b>32238</b>	<b>15023</b>	<b>2318</b>	<b>860</b>	<b>10178</b>	<b>605</b>	<b>1013</b>	<b>1170</b>	<b>2928</b>
62	Zitište	2571	2383	1085	484	0	965	52	0	0	200
63	Zrenjanin - city	28534	24197	11436	1030	860	7334	520	783	1052	2404
64	Nova Crnja	1126	969	450	84	0	271	13	40	0	82
65	Novi Bečej	3552	2933	1418	159	0	1257	11	126	104	170
66	Sečanj	1936	1756	634	561	0	351	9	64	14	72
<b>67</b>	<b>Srem</b>	<b>58454</b>	<b>43770</b>	<b>21036</b>	<b>2397</b>	<b>72</b>	<b>12045</b>	<b>719</b>	<b>1481</b>	<b>2040</b>	<b>5824</b>
68	Indija	9232	5791	3062	255	0	1700	103	252	159	826
69	Irig	1286	886	424	44	0	177	0	57	33	43
70	Pečinci	3247	2357	1071	197	0	895	21	14	8	257
71	Ruma	10126	7675	3290	365	0	2237	247	289	766	880
72	Sremska Mitrovica - city	15351	12613	6543	642	18	2804	280	353	598	1338
73	Stara Pazova	12932	9644	4716	230	54	2989	45	314	378	1965
74	Sid	6280	4804	1930	664	0	1243	23	202	98	515
<b>75</b>	<b>SERBIA - SOUTH</b>	<b>703707</b>	<b>523789</b>	<b>231229</b>	<b>9139</b>	<b>11737</b>	<b>147262</b>	<b>15065</b>	<b>17512</b>	<b>24679</b>	<b>52848</b>
<b>76</b>	<b>Šumadija and West Serbia</b>	<b>402607</b>	<b>292949</b>	<b>131791</b>	<b>5412</b>	<b>5919</b>	<b>87771</b>	<b>6431</b>	<b>9735</b>	<b>14650</b>	<b>30984</b>
<b>77</b>	<b>Zlatibor</b>	<b>58524</b>	<b>43988</b>	<b>19125</b>	<b>1024</b>	<b>660</b>	<b>14165</b>	<b>1145</b>	<b>1561</b>	<b>3523</b>	<b>2891</b>
78	Arilje	4983	3596	1889	155	0	2351	30	121	26	133
79	Bajina Bašta	4315	3050	1048	24	5	653	302	175	558	86
80	Kosjerić	1944	1415	558	34	0	742	37	53	34	78
81	Nova Varoš	2687	1884	878	42	0	697	151	89	4	58
82	Požega	5699	4104	1670	56	8	1542	63	117	338	375
83	Priboj	4641	3488	1390	3	3	1506	147	96	32	187
84	Prijepolje	5055	3694	1632	12	0	780	51	125	455	333
85	Sjenica	3926	2666	1156	82	471	709	39	57	45	68
86	Užice - city	21663	17309	7461	140	167	4785	289	603	1954	1471
87	Čajetina	3611	2782	1443	476	6	400	36	125	77	102
<b>88</b>	<b>Kolubara</b>	<b>39339</b>	<b>26042</b>	<b>11985</b>	<b>639</b>	<b>1500</b>	<b>8801</b>	<b>444</b>	<b>863</b>	<b>1483</b>	<b>2087</b>
89	Valjevo - city	27791	17528	8636	144	54	6639	349	532	1250	1539
90	Lajkovac	2806	2420	663	12	1039	495	0	52	0	44
91	Ljig	1906	1380	617	31	284	333	0	69	21	94
92	Mionica	1785	1248	596	6	25	481	14	53	77	72
93	Osečina	1380	1032	443	89	0	455	17	48	23	63
94	Ub	3671	2434	1030	357	98	398	64	109	112	275
<b>95</b>	<b>Mačva</b>	<b>52854</b>	<b>38795</b>	<b>17467</b>	<b>854</b>	<b>623</b>	<b>9218</b>	<b>848</b>	<b>1277</b>	<b>2020</b>	<b>5829</b>
96	Bogatić	2903	1808	792	98	18	171	29	41	2	474
97	Vladimirci	1966	1673	938	180	4	624	22	37	26	138
98	Koceljeva	1769	1197	492	11	101	386	17	32	29	92
99	Krupanj	1469	1017	507	77	10	215	14	35	41	66
100	Loznica	14183	10688	5302	182	1	2846	344	415	544	1674
101	Ljubovija	2523	1619	632	28	316	460	19	41	71	74
102	Mali Zvornik	1602	964	410	54	140	48	84	55	21	68
103	Sabac - city	26439	19829	8394	224	33	4468	319	621	1286	3243

<sup>1)</sup> Source: Republic Institute for Health Insurance. Data of entrepreneurs for municipalities Požarevac and Kostolac are estimated.

**activity sections, 2011**  
**September 30th -**

(companies, enterprises, cooperatives, institutions and other organizations)													Entrepreneurs and their employees <sup>1)</sup>		Row no.
Transport and storage	Accommodation and food service activities	Information and communication	Financial and insurance activities	Real estate activities	Professional, scientific and technical activities	Administrative and support service activities	Public administration and defence; compulsory social security	Education	Human health and social work activities	Arts, entertainment and recreation	Other service activities	All	where of: women		
<b>1452</b>	<b>156</b>	<b>321</b>	<b>237</b>	<b>13</b>	<b>545</b>	<b>606</b>	<b>1081</b>	<b>3110</b>	<b>3090</b>	<b>263</b>	<b>228</b>	<b>5378</b>	<b>2130</b>	<b>50</b>	
93	7	31	24	0	36	66	83	293	301	22	25	1097	401	51	
342	8	29	28	0	135	23	178	435	538	10	26	691	328	52	
679	73	186	112	12	160	466	486	1339	1166	168	89	2376	916	53	
68	7	16	10	0	21	10	64	194	354	8	9	207	71	54	
236	42	57	48	0	158	18	201	621	599	49	56	757	321	55	
34	19	2	15	1	35	23	69	228	132	6	23	250	93	56	
<b>2747</b>	<b>369</b>	<b>1002</b>	<b>509</b>	<b>61</b>	<b>1236</b>	<b>502</b>	<b>1473</b>	<b>3744</b>	<b>4045</b>	<b>541</b>	<b>420</b>	<b>8184</b>	<b>3672</b>	<b>57</b>	
124	23	140	79	10	100	27	168	681	497	36	27	495	205	58	
22	3	2	10	0	12	4	73	165	111	8	3	498	173	59	
2601	343	860	420	51	1124	471	1232	2898	3437	497	390	7191	3294	60	
<b>1463</b>	<b>185</b>	<b>355</b>	<b>301</b>	<b>115</b>	<b>706</b>	<b>233</b>	<b>1592</b>	<b>3801</b>	<b>3827</b>	<b>408</b>	<b>180</b>	<b>5481</b>	<b>2251</b>	<b>61</b>	
42	10	13	5	0	14	44	113	288	131	15	7	188	78	62	
1260	131	313	261	115	579	185	1165	2679	3043	354	129	4337	1832	63	
45	0	5	6	0	7	1	111	207	85	8	4	157	68	64	
82	33	9	21	0	94	2	104	323	382	23	33	619	194	65	
34	11	15	8	0	12	1	99	304	186	8	7	180	79	66	
<b>3175</b>	<b>211</b>	<b>696</b>	<b>465</b>	<b>26</b>	<b>936</b>	<b>1044</b>	<b>2687</b>	<b>4486</b>	<b>4776</b>	<b>535</b>	<b>155</b>	<b>14684</b>	<b>5488</b>	<b>67</b>	
319	18	67	67	0	122	77	191	609	805	204	17	3441	1299	68	
28	30	13	7	0	17	17	65	95	251	6	3	400	154	69	
169	3	128	11	5	38	1	103	276	223	6	2	890	435	70	
696	25	100	76	10	117	18	295	860	615	55	24	2451	909	71	
783	82	185	161	10	281	99	1481	1410	1837	183	68	2738	1064	72	
733	46	72	99	1	174	783	281	769	651	32	28	3288	982	73	
447	7	131	44	0	187	49	271	467	394	49	13	1476	645	74	
<b>30609</b>	<b>7515</b>	<b>7405</b>	<b>7795</b>	<b>551</b>	<b>10262</b>	<b>5139</b>	<b>29043</b>	<b>63857</b>	<b>72922</b>	<b>6546</b>	<b>3903</b>	<b>179918</b>	<b>75026</b>	<b>75</b>	
<b>17497</b>	<b>4547</b>	<b>4268</b>	<b>4624</b>	<b>249</b>	<b>5720</b>	<b>2378</b>	<b>15110</b>	<b>33897</b>	<b>38287</b>	<b>3639</b>	<b>1831</b>	<b>109658</b>	<b>46332</b>	<b>76</b>	
<b>2280</b>	<b>1196</b>	<b>546</b>	<b>500</b>	<b>11</b>	<b>602</b>	<b>245</b>	<b>2041</b>	<b>5182</b>	<b>5576</b>	<b>686</b>	<b>154</b>	<b>14536</b>	<b>5576</b>	<b>77</b>	
19	41	8	18	0	48	7	59	406	155	16	3	1387	655	78	
70	105	7	8	0	45	48	90	389	248	231	6	1265	401	79	
49	1	11	4	0	27	6	55	171	105	6	2	529	142	80	
27	41	12	16	0	9	5	117	316	281	18	1	803	267	81	
232	60	24	19	0	57	22	281	496	391	15	8	1595	544	82	
200	64	15	27	1	53	7	107	445	562	30	3	1153	464	83	
202	57	15	37	0	16	25	283	678	596	19	10	1361	445	84	
44	20	53	0	0	53	17	123	581	251	24	29	1260	711	85	
1416	141	398	371	10	262	103	831	1439	2591	248	90	4354	1674	86	
21	666	3	0	0	32	5	95	261	396	79	2	829	273	87	
<b>1263</b>	<b>411</b>	<b>308</b>	<b>223</b>	<b>49</b>	<b>481</b>	<b>186</b>	<b>1417</b>	<b>2658</b>	<b>2823</b>	<b>223</b>	<b>183</b>	<b>13297</b>	<b>6029</b>	<b>88</b>	
857	280	230	192	49	298	167	960	1548	2134	158	148	10263	4840	89	
167	2	20	1	0	55	2	126	221	166	10	8	386	196	90	
34	62	18	2	0	27	4	75	194	108	10	14	526	227	91	
29	63	9	5	0	36	6	78	174	108	9	3	537	222	92	
17	2	13	5	0	13	4	64	117	85	14	3	348	82	93	
159	2	18	18	0	52	3	114	404	222	22	7	1237	462	94	
<b>3620</b>	<b>216</b>	<b>447</b>	<b>444</b>	<b>34</b>	<b>856</b>	<b>338</b>	<b>1983</b>	<b>4656</b>	<b>4992</b>	<b>331</b>	<b>209</b>	<b>14059</b>	<b>5302</b>	<b>95</b>	
104	3	14	9	0	80	9	117	368	264	3	4	1095	309	96	
103	2	4	3	0	23	3	78	251	153	16	6	293	81	97	
82	0	8	10	0	34	2	61	198	125	7	2	572	246	98	
31	25	7	9	0	14	2	82	267	109	10	3	452	126	99	
471	93	118	149	2	165	95	512	1202	1763	77	35	3495	1293	100	
121	0	6	1	0	42	2	78	200	142	7	11	904	344	101	
50	4	7	6	0	22	2	61	211	112	13	6	638	182	102	
2658	89	283	257	32	476	223	994	1959	2324	198	142	6610	2721	103	

**Employees by  
- As of**

**Republic of Serbia**

Row no.	Region Area City - Municipality	Total	Employees at legal entities								
			All	where of: women	Agriculture, forestry and fishing	Mining and quarrying	Manufacturing	Electricity, gas, steam and air conditioning supply	Water supply; sewerage, waste management and remediation activities	Construction	Wholesale and retail trade; repair of motor vehicles and motor cycles
<b>104</b>	<b>Moravica</b>	<b>45512</b>	<b>34485</b>	<b>15836</b>	<b>549</b>	<b>476</b>	<b>13198</b>	<b>535</b>	<b>816</b>	<b>1119</b>	<b>4321</b>
105	Gornji Milanovac	9314	7432	3381	62	428	2941	60	205	132	721
106	Ivanjica	6507	4905	2383	258	0	2397	51	80	304	237
107	Lučani	3619	3171	1179	33	2	2024	54	0	83	200
108	Cačak - city	26072	18977	8893	196	46	5836	370	531	600	3163
<b>109</b>	<b>Pomoravlje</b>	<b>46720</b>	<b>31164</b>	<b>13562</b>	<b>584</b>	<b>1065</b>	<b>9010</b>	<b>606</b>	<b>1076</b>	<b>844</b>	<b>3391</b>
110	Despotovac	3917	3063	949	79	1018	278	23	105	48	177
111	Jagodina - city	21095	11898	5346	235	10	4357	216	331	357	1015
112	Paraćin	10461	7794	3249	87	0	3121	92	220	166	1144
113	Rekovac	1147	869	373	4	25	109	25	62	0	33
114	Svilajnac	3736	2635	1179	63	4	260	181	151	76	608
115	Cuprija	6364	4905	2466	116	8	885	69	207	197	414
<b>116</b>	<b>Rasina</b>	<b>42863</b>	<b>33285</b>	<b>14823</b>	<b>643</b>	<b>219</b>	<b>11723</b>	<b>828</b>	<b>1153</b>	<b>1244</b>	<b>3169</b>
117	Aleksandrovac	4582	3211	1313	118	0	1553	30	138	96	216
118	Brus	2510	1777	1026	49	5	782	25	83	17	36
119	Varvarin	1726	955	458	60	0	141	15	54	3	69
120	Kruševac - city	24372	19879	8846	233	210	5351	573	636	1083	2375
121	Trstenik	8267	6395	2715	156	0	3389	175	205	25	413
122	Cićevec	1406	1068	465	27	4	507	10	37	20	60
<b>123</b>	<b>Raška</b>	<b>55822</b>	<b>37985</b>	<b>16163</b>	<b>885</b>	<b>1016</b>	<b>7117</b>	<b>840</b>	<b>1513</b>	<b>2666</b>	<b>4210</b>
124	Vrnjačka Banja	6585	4394	2131	179	0	883	62	248	362	364
125	Kraljevo - city	26292	18193	7553	511	193	3703	494	645	1495	1874
126	Novi Pazar - city	15681	10087	4419	46	180	1868	162	427	556	1614
127	Raška	4428	3246	1189	80	594	391	101	152	98	236
128	Tutin	2836	2065	871	69	49	272	21	41	155	122
<b>129</b>	<b>Šumadija</b>	<b>60973</b>	<b>47205</b>	<b>22830</b>	<b>234</b>	<b>360</b>	<b>14539</b>	<b>1185</b>	<b>1476</b>	<b>1751</b>	<b>5086</b>
130	Arandjelovac	9862	7438	3340	34	197	2960	88	282	161	823
131	Batočina	1762	1271	633	19	84	380	63	90	78	119
132	Knić	1388	979	413	4	0	331	26	17	3	84
133	Kragujevac - city	39377	30613	14754	110	9	7072	924	892	1473	3496
134	Lapovo	1747	1403	451	1	1	400	0	79	7	99
135	Rača	3815	3426	2251	41	0	2828	29	26	14	64
136	Topola	3022	2075	988	25	69	568	55	90	15	401
<b>137</b>	<b>South and East Serbia</b>	<b>301100</b>	<b>230840</b>	<b>99438</b>	<b>3727</b>	<b>5818</b>	<b>59491</b>	<b>8634</b>	<b>7777</b>	<b>10029</b>	<b>21864</b>
<b>138</b>	<b>Bor</b>	<b>26956</b>	<b>22400</b>	<b>8788</b>	<b>266</b>	<b>2962</b>	<b>5145</b>	<b>1470</b>	<b>787</b>	<b>423</b>	<b>1468</b>
139	Bor	11850	10454	3948	58	1986	2384	412	443	147	453
140	Kladovo	4576	3975	1514	65	3	1390	598	69	8	455
141	Majdanpek	4519	3500	1293	75	968	1078	106	58	61	61
142	Negotin	6011	4471	2033	68	5	293	354	217	207	499
<b>143</b>	<b>Braničevo</b>	<b>35601</b>	<b>24766</b>	<b>10332</b>	<b>593</b>	<b>444</b>	<b>3635</b>	<b>3889</b>	<b>766</b>	<b>1208</b>	<b>3043</b>
144	City of Požarevac	21792	16493	6547	218	59	2532	3763	484	907	1901
145	Požarevac	15914	10998	5400	218	59	1725	296	484	906	1822
146	Kostolac	5878	5495	1147	0	0	807	3467	0	1	79
147	Veliko Gradište	2206	1339	589	20	2	263	23	7	134	154
148	Golubac	963	587	263	73	74	17	11	40	5	51
149	Zabari	1148	835	310	17	0	374	0	0	25	65
150	Zagubica	1464	1064	374	72	276	66	21	48	38	79
151	Kučevo	2050	1263	571	120	3	169	34	50	39	92
152	Malo Crniče	1013	611	319	16	0	3	0	0	53	204
153	Petrovac na Mlavi	4965	2574	1359	57	30	211	37	137	7	497
<b>154</b>	<b>Zaječar</b>	<b>22045</b>	<b>16706</b>	<b>7086</b>	<b>470</b>	<b>1485</b>	<b>3408</b>	<b>353</b>	<b>696</b>	<b>667</b>	<b>1289</b>
155	Boljevac	1774	1391	492	93	314	264	20	102	8	62
156	Zaječar - city	11657	8870	3750	232	577	1326	241	295	488	822
157	Knjaževac	5584	4166	2016	93	2	1782	61	167	155	299
158	Sokobanja	3030	2279	828	52	592	36	31	132	16	106

<sup>1)</sup> Source: Republic Institute for Health Insurance. Data of entrepreneurs for municipalities Požarevac and Kostolac are estimated.

**activity sections, 2011**  
**September 30th -**

(companies, enterprises, cooperatives, institutions and other organizations)

Transport and storage	Accommodation and food service activities	Information and communication	Financial and insurance activities	Real estate activities	Professional, scientific and technical activities	Administrative and support service activities	Public administration and defence; compulsory social security	Education	Human health and social work activities	Arts, entertainment and recreation	Other service activities	Entrepreneurs and their employees <sup>1)</sup>		Row no.
												All	where of: women	
<b>1797</b>	<b>317</b>	<b>557</b>	<b>991</b>	<b>14</b>	<b>705</b>	<b>329</b>	<b>1245</b>	<b>3230</b>	<b>3793</b>	<b>376</b>	<b>117</b>	<b>11027</b>	<b>5079</b>	<b>104</b>
228	70	152	523	0	160	23	218	641	809	42	17	1882	854	105
291	14	19	23	0	43	108	123	450	479	13	15	1602	603	106
73	41	12	1	0	25	8	78	303	217	13	4	448	155	107
1205	192	374	444	14	477	190	826	1836	2288	308	81	7095	3467	108
<b>1783</b>	<b>366</b>	<b>565</b>	<b>193</b>	<b>13</b>	<b>702</b>	<b>355</b>	<b>1693</b>	<b>3534</b>	<b>4716</b>	<b>457</b>	<b>211</b>	<b>15556</b>	<b>6256</b>	<b>109</b>
191	204	57	9	0	47	9	125	314	335	37	7	854	421	110
525	69	239	96	7	329	297	659	1232	1579	293	52	9197	3567	111
660	12	95	32	5	124	31	311	789	812	43	50	2667	1024	112
123	3	13	10	0	28	3	63	222	126	17	3	278	108	113
103	15	43	22	1	45	10	147	460	353	15	78	1101	492	114
181	63	118	24	0	129	5	388	517	1511	52	21	1459	644	115
<b>1576</b>	<b>358</b>	<b>459</b>	<b>420</b>	<b>13</b>	<b>774</b>	<b>173</b>	<b>1862</b>	<b>3786</b>	<b>4027</b>	<b>379</b>	<b>479</b>	<b>9578</b>	<b>4121</b>	<b>116</b>
90	25	23	17	0	72	3	120	396	271	28	15	1371	456	117
73	31	33	16	0	16	9	81	296	209	13	3	733	308	118
24	23	8	11	0	50	3	83	246	136	29	0	771	332	119
1173	185	330	326	13	515	97	1284	2093	2829	270	303	4493	2078	120
167	72	52	42	0	117	52	217	663	472	20	158	1872	783	121
49	22	13	8	0	4	9	77	92	110	19	0	338	164	122
<b>3068</b>	<b>1051</b>	<b>704</b>	<b>349</b>	<b>92</b>	<b>699</b>	<b>194</b>	<b>2228</b>	<b>5282</b>	<b>5435</b>	<b>448</b>	<b>188</b>	<b>17837</b>	<b>7866</b>	<b>123</b>
251	394	88	22	32	149	15	169	433	698	16	29	2191	957	124
2051	258	326	185	59	353	87	939	2047	2608	248	117	8099	3993	125
389	147	180	133	1	122	87	803	1830	1413	94	35	5594	2096	126
322	247	80	9	0	57	4	192	315	292	69	7	1182	565	127
55	5	30	0	0	18	1	125	657	424	21	0	771	255	128
<b>2110</b>	<b>632</b>	<b>682</b>	<b>1504</b>	<b>23</b>	<b>901</b>	<b>558</b>	<b>2641</b>	<b>5569</b>	<b>6925</b>	<b>739</b>	<b>290</b>	<b>13768</b>	<b>6103</b>	<b>129</b>
209	273	75	50	0	142	74	216	787	934	98	35	2424	1138	130
27	0	11	18	0	9	2	44	150	148	23	6	491	197	131
80	0	8	7	1	29	2	71	200	110	6	0	409	157	132
1167	313	563	1406	22	665	410	2129	3832	5339	590	201	8764	3962	133
537	15	0	5	0	11	25	28	95	89	9	2	344	160	134
14	2	7	7	0	17	2	62	184	122	3	4	389	143	135
76	29	18	11	0	28	43	91	321	183	10	42	947	346	136
<b>13112</b>	<b>2968</b>	<b>3137</b>	<b>3171</b>	<b>302</b>	<b>4542</b>	<b>2761</b>	<b>13933</b>	<b>29960</b>	<b>34635</b>	<b>2907</b>	<b>2072</b>	<b>70260</b>	<b>28694</b>	<b>137</b>
<b>1050</b>	<b>223</b>	<b>206</b>	<b>442</b>	<b>15</b>	<b>530</b>	<b>409</b>	<b>1182</b>	<b>2336</b>	<b>3031</b>	<b>370</b>	<b>85</b>	<b>4556</b>	<b>1804</b>	<b>138</b>
575	71	152	158	2	375	349	381	958	1324	185	41	1396	523	139
103	99	13	12	2	60	9	171	338	547	23	10	601	247	140
97	15	17	6	0	16	16	134	339	345	93	15	1019	396	141
275	38	24	266	11	79	35	496	701	815	69	19	1540	638	142
<b>987</b>	<b>364</b>	<b>245</b>	<b>171</b>	<b>4</b>	<b>370</b>	<b>210</b>	<b>1800</b>	<b>2831</b>	<b>3456</b>	<b>218</b>	<b>532</b>	<b>10835</b>	<b>4535</b>	<b>143</b>
642	271	199	142	3	193	170	1255	1247	1925	125	457	5299	2412	144
337	66	199	142	3	193	138	1255	1021	1925	114	95	4916	2274	145
305	205	0	0	0	0	32	0	226	0	11	362	383	138	146
92	27	1	22	1	29	8	96	251	171	25	13	867	394	147
15	23	0	0	0	16	1	51	123	78	5	4	376	127	148
24	12	0	0	0	18	0	53	143	97	6	1	313	116	149
26	9	10	0	0	16	3	74	177	138	1	10	400	167	150
82	16	0	0	0	22	0	91	285	198	21	41	787	275	151
21	0	0	0	0	16	0	44	171	77	6	0	402	141	152
85	6	35	7	0	60	28	136	434	772	29	6	2391	903	153
<b>739</b>	<b>289</b>	<b>221</b>	<b>159</b>	<b>12</b>	<b>308</b>	<b>211</b>	<b>1060</b>	<b>2083</b>	<b>2954</b>	<b>211</b>	<b>91</b>	<b>5339</b>	<b>2351</b>	<b>154</b>
20	5	1	9	0	19	3	68	219	175	3	6	383	192	155
552	48	148	114	10	117	161	739	1096	1680	165	59	2787	1096	156
76	30	59	24	2	127	25	157	550	505	33	19	1418	739	157
91	206	13	12	0	45	22	96	218	594	10	7	751	324	158

**Employees by  
- As of**

**Republic of Serbia**

Row no.	Region Area City - Municipality	Total	Employees at legal entities								
			All	where of: women	Agriculture, forestry and fishing	Mining and quarrying	Manufacturing	Electricity, gas, steam and air conditioning supply	Water supply; sewerage, waste management and remediation activities	Construction	Wholesale and retail trade; repair of motor vehicles and motor cycles
<b>159</b>	<b>Jablanica</b>	<b>34344</b>	<b>23155</b>	<b>10908</b>	<b>393</b>	<b>222</b>	<b>4931</b>	<b>453</b>	<b>999</b>	<b>1017</b>	<b>2469</b>
160	Bojnik	1152	768	336	44	4	56	14	42	15	61
161	Vlasotince	4986	2847	1546	35	3	1005	32	145	226	309
162	Lebane	2265	1344	647	37	3	211	26	73	11	99
163	Leskovac - city	24040	16797	7841	223	0	3593	363	686	648	1985
164	Medveđa	1224	1033	409	25	212	49	14	48	8	14
165	Crna Trava	677	366	129	29	0	17	4	5	109	1
<b>166</b>	<b>Niš</b>	<b>73660</b>	<b>60857</b>	<b>27033</b>	<b>399</b>	<b>317</b>	<b>12015</b>	<b>1059</b>	<b>2029</b>	<b>3098</b>	<b>7196</b>
167	City of Nis	61080	51483	22988	188	17	9315	939	1670	2867	6383
168	Niš - Medijana	38577	34189	16336	82	15	2552	855	1251	1833	4324
169	Niš - Niška Banja	2132	1685	695	2	2	745	20	3	53	67
170	Niš - Palilula	8856	6674	2282	34	0	2970	0	2	492	832
171	Niš - Pantelej	4121	2536	1214	46	0	926	1	3	195	476
172	Niš - Crveni Krst	7394	6399	2461	24	0	2122	63	411	294	684
173	Aleksinac	5321	4199	1921	119	296	740	55	272	66	272
174	Gadžin Han	1679	1000	360	1	1	389	10	3	71	201
175	Doljevac	1397	838	377	6	3	117	7	0	16	70
176	Merošina	1473	1256	553	9	0	613	15	24	0	89
177	Ražanj	696	535	228	50	0	88	10	18	0	35
178	Svrljig	2014	1546	606	26	0	753	23	42	78	146
<b>179</b>	<b>Pirot</b>	<b>20246</b>	<b>15742</b>	<b>6886</b>	<b>206</b>	<b>56</b>	<b>6748</b>	<b>285</b>	<b>340</b>	<b>376</b>	<b>832</b>
180	Babušnica	1936	1582	710	14	0	766	26	60	26	95
181	Bela Palanka	1922	1229	532	52	55	349	20	43	47	48
182	Dimitrovgrad	1846	1421	642	6	1	197	23	23	17	66
183	Pirot	14542	11510	5002	134	0	5436	216	214	286	623
<b>184</b>	<b>Podunavlje</b>	<b>39173</b>	<b>27844</b>	<b>10977</b>	<b>307</b>	<b>45</b>	<b>10671</b>	<b>397</b>	<b>950</b>	<b>1866</b>	<b>2624</b>
185	Velika Plana	6750	4559	1718	102	40	471	63	18	1067	1088
186	Smederevo - city	23275	16586	6413	124	5	7858	259	726	434	1152
187	Smederevska Palanka	9148	6699	2846	81	0	2342	75	206	365	384
<b>188</b>	<b>Pčinja</b>	<b>35166</b>	<b>28490</b>	<b>12095</b>	<b>767</b>	<b>285</b>	<b>9906</b>	<b>563</b>	<b>736</b>	<b>963</b>	<b>2276</b>
189	Bosilegrad	1145	839	422	19	44	187	28	26	32	65
190	Bujanovac	5348	4114	1586	229	20	1511	47	85	93	221
191	Vladičin Han	2866	1931	851	87	0	531	38	120	108	98
192	Vranje - city	18783	16246	7197	323	216	6492	241	319	506	1568
193	Preševo	2795	2248	682	1	1	415	18	53	45	174
194	Surdulica	3287	2334	1038	98	0	428	182	111	175	118
195	Trgovište	942	778	319	10	4	342	9	22	4	32
<b>196</b>	<b>Toplica</b>	<b>13909</b>	<b>10880</b>	<b>5333</b>	<b>326</b>	<b>2</b>	<b>3032</b>	<b>165</b>	<b>474</b>	<b>411</b>	<b>667</b>
197	Blace	1660	1277	561	29	0	403	19	54	141	79
198	Zitorađa	1280	899	367	83	1	209	13	19	1	28
199	Kuršumlija	2669	2057	937	119	0	423	33	89	54	205
200	Prokuplje	8300	6647	3468	95	1	1997	100	312	215	355
<b>201</b>	<b>Kosovo and Metohija</b>	<b>...</b>	<b>...</b>	<b>...</b>	<b>...</b>	<b>...</b>	<b>...</b>	<b>...</b>	<b>...</b>	<b>...</b>	<b>...</b>

<sup>1)</sup> Source: Republic Institute for Health Insurance. Data of entrepreneurs for municipalities Požarevac and Kostolac are estimated.



**activity sections, 2011**  
**September 30th -**

(companies, enterprises, cooperatives, institutions and other organizations)												Entrepreneurs and their employees <sup>1)</sup>		Row no.
Transport and storage	Accommodation and food service activities	Information and communication	Financial and insurance activities	Real estate activities	Professional, scientific and technical activities	Administrative and support service activities	Public administration and defence; compulsory social security	Education	Human health and social work activities	Arts, entertainment and recreation	Other service activities	All	where of: women	
<b>1023</b>	<b>323</b>	<b>270</b>	<b>251</b>	<b>0</b>	<b>265</b>	<b>153</b>	<b>1819</b>	<b>4218</b>	<b>3736</b>	<b>335</b>	<b>278</b>	<b>11189</b>	<b>4513</b>	<b>159</b>
35	2	3	0	0	34	2	84	215	141	16	0	384	141	160
38	2	15	9	0	16	6	162	490	318	27	9	2139	774	161
62	16	13	6	0	40	19	114	376	221	10	7	921	373	162
874	160	227	234	0	171	125	1294	2799	2887	272	256	7243	3102	163
10	139	12	0	0	4	1	100	260	126	8	3	191	72	164
4	4	0	2	0	0	0	65	78	43	2	3	311	51	165
<b>5562</b>	<b>963</b>	<b>1455</b>	<b>972</b>	<b>224</b>	<b>1777</b>	<b>898</b>	<b>3527</b>	<b>7671</b>	<b>10298</b>	<b>872</b>	<b>525</b>	<b>12803</b>	<b>4956</b>	<b>166</b>
5281	914	1412	944	223	1592	816	2997	6050	8614	779	482	9597	3949	167
4719	844	1276	748	126	1081	759	2281	3048	7396	631	368	4388	1914	168
0	16	16	2	0	11	2	34	207	500	5	0	447	188	169
242	53	35	106	3	248	23	577	931	26	44	56	2182	824	170
60	1	68	1	1	120	18	57	439	111	10	3	1585	604	171
260	0	17	87	93	132	14	48	1425	581	89	55	995	419	172
69	18	28	20	0	57	12	228	849	1036	41	21	1122	398	173
18	0	1	0	0	17	2	56	116	90	13	11	679	206	174
85	0	3	0	0	13	61	57	231	147	17	5	559	157	175
52	20	0	0	0	49	4	71	153	142	15	0	217	52	176
29	8	1	3	1	20	1	58	107	98	3	5	161	58	177
28	3	10	5	0	29	2	60	165	171	4	1	468	136	178
<b>681</b>	<b>197</b>	<b>156</b>	<b>639</b>	<b>3</b>	<b>356</b>	<b>353</b>	<b>820</b>	<b>1601</b>	<b>1731</b>	<b>174</b>	<b>188</b>	<b>4504</b>	<b>1977</b>	<b>179</b>
19	36	0	5	0	70	2	61	265	128	8	1	354	146	180
36	19	19	7	0	41	73	63	208	139	6	4	693	287	181
200	103	17	4	0	6	132	223	157	190	8	48	425	199	182
426	39	120	623	3	239	146	473	971	1274	152	135	3032	1345	183
<b>1542</b>	<b>152</b>	<b>155</b>	<b>219</b>	<b>1</b>	<b>520</b>	<b>236</b>	<b>1132</b>	<b>3149</b>	<b>3486</b>	<b>276</b>	<b>116</b>	<b>11329</b>	<b>4869</b>	<b>184</b>
313	17	23	27	0	64	72	128	644	373	32	17	2191	267	185
806	72	94	145	0	301	69	794	1678	1822	174	73	6689	3324	186
423	63	38	47	1	155	95	210	827	1291	70	26	2449	1278	187
<b>1207</b>	<b>449</b>	<b>331</b>	<b>185</b>	<b>1</b>	<b>271</b>	<b>209</b>	<b>1584</b>	<b>4334</b>	<b>3840</b>	<b>358</b>	<b>225</b>	<b>6676</b>	<b>2522</b>	<b>188</b>
16	0	12	1	0	8	3	75	173	105	34	11	306	131	189
94	14	36	28	0	47	14	200	836	513	74	52	1234	321	190
119	64	15	6	0	18	7	101	352	225	32	10	935	402	191
788	324	218	131	1	175	145	882	1564	2070	152	131	2537	1115	192
137	2	32	3	0	15	20	156	829	307	23	17	547	84	193
35	45	17	15	0	4	19	102	402	549	31	3	953	421	194
18	0	1	1	0	4	1	68	178	71	12	1	164	48	195
<b>321</b>	<b>8</b>	<b>98</b>	<b>133</b>	<b>42</b>	<b>145</b>	<b>82</b>	<b>1009</b>	<b>1737</b>	<b>2103</b>	<b>93</b>	<b>32</b>	<b>3029</b>	<b>1167</b>	<b>196</b>
30	7	6	8	0	31	15	64	215	163	10	3	383	139	197
13	0	1	2	0	37	0	69	224	172	24	3	381	122	198
91	0	13	51	0	4	3	129	309	522	9	3	612	230	199
187	1	78	72	42	73	64	747	989	1246	50	23	1653	676	200
...	...	...	...	...	...	...	...	...	...	...	...	...	...	<b>201</b>

## METHODOLOGICAL EXPLANATIONS

Data on employees in legal entities (companies, enterprises, cooperatives, institutions and other organizations) are obtained on the basis of regular Semi-annual survey on employees and their salaries and wages (RAD-1/P) and Survey on additional semi-annual report on employees and their salaries and wages that provided data on number of employees in small enterprises (up to 50 employees) that are not covered by regular semi-annual survey. This Survey does not cover employees in the Ministry of Defense and Ministry of Interior.

Data on entrepreneurs (persons individually running business) and on their employees are provided by regular semi-annual report (RAD-15), from the Republic Institute for Health Insurance.

Presentation of the data by activities is done in accordance with the Regulation on Classification of Activities („Official Gazette of RS“, No. 54/10), while territorial distribution was performed according to the Regulation on Nomenclature of Statistical Territorial Units („Official Gazette of RS“, No. 109/09 and 46/10).

Starting from 1999 the Statistical Office of the Republic of Serbia has not at disposal and may not provide available certain data relative to AP Kosovo and Metohia and therefore these data are not included in the coverage for the Republic of Serbia (total).