

COMMUNICATION

Number 357 • Year LIX, 30/12/2009

Labor Force Survey

RS10

SERB 357 RS10 301209

Labor Force Survey

October 2009

- Preliminary results -

Introductory notes

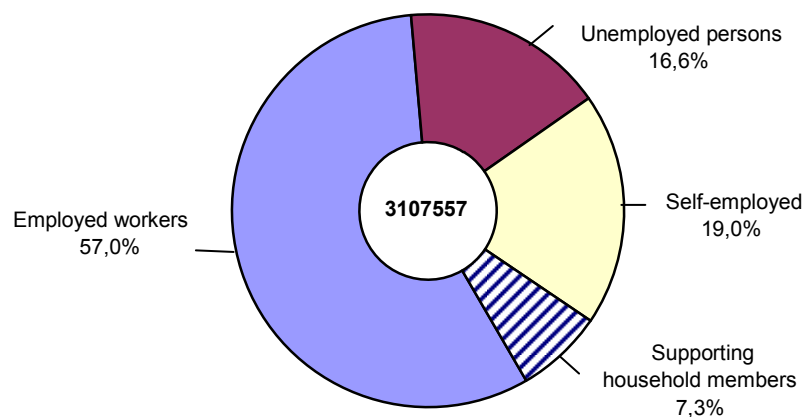
Labor Force Survey represents a study survey that most completely considers the labor force status and fluctuations in the labor market.

While conducting this survey, the methodological solutions, harmonized with the recommendations and definitions of the International Labor Organization – ILO and EUROSTAT requirements (European Statistical Office) were applied and thereby, the most important source was obtained for the international comparison of data of the Republic of Serbia and other countries, regarding the field of labor statistics. The frame for the sample selection is based on the 2002 Census of population, households and dwellings.

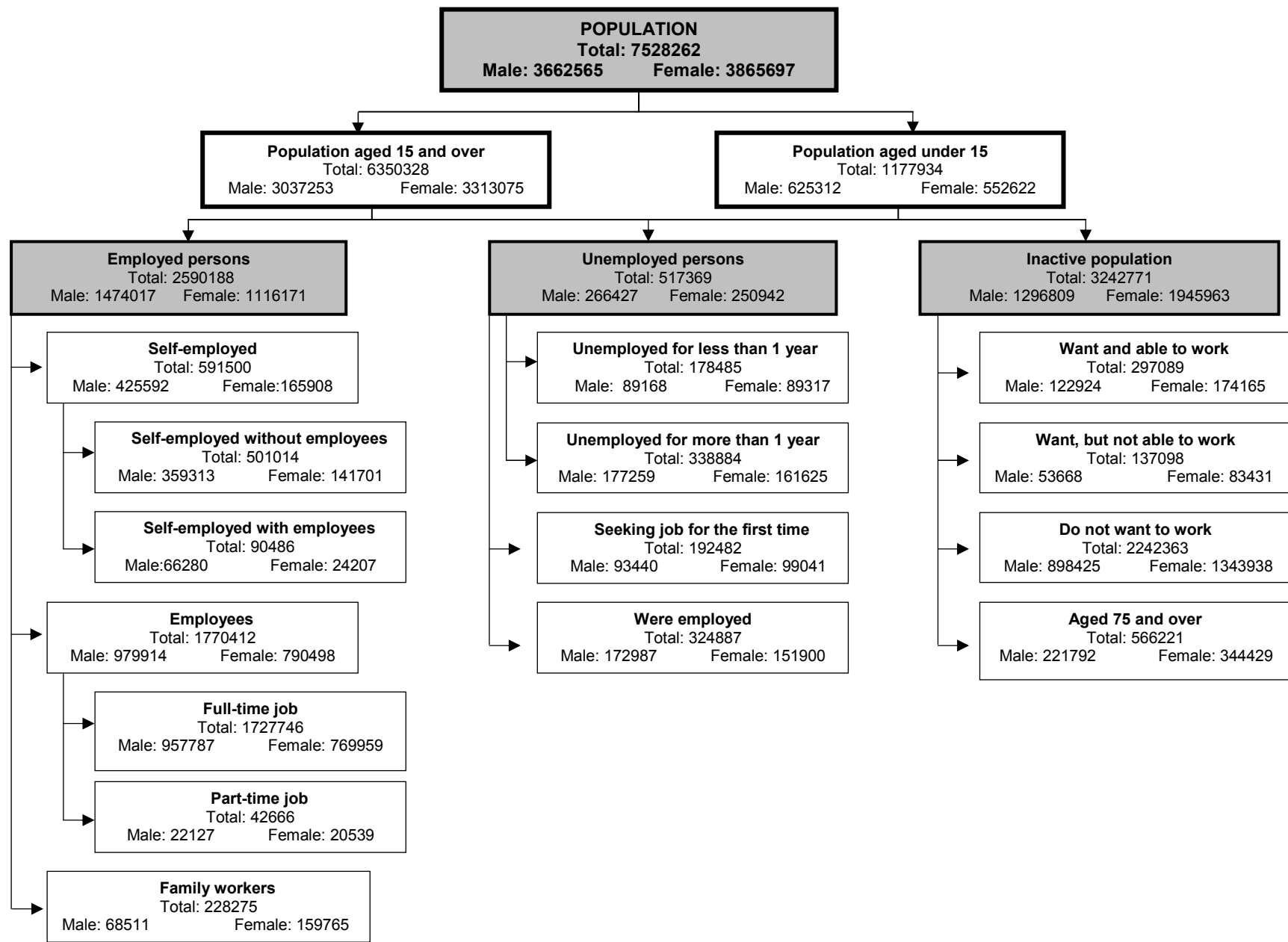
The survey covered about 7000 households of Central Serbia and Vojvodina. The data were collected relative to the demographic features of the whole population. For the population aged 15 and over, the data on their working activity were also collected. The total of 20687 persons were interviewed and for 17997 persons the data regarding their working activity were obtained, which equals to 0.3% of the total number of persons aged 15 and over.

Labor Force Survey was carried out in October 2009 and the observation period was 9-25 October 2009.

Structure of active population aged 15 and over, October 2009
- Republic of Serbia -



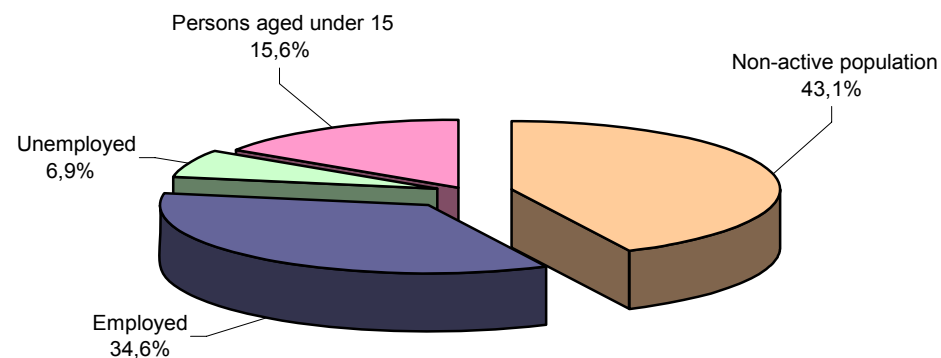
Review of basic population sets of the Republic of Serbia, October 2009



1. Population by activity, sex, region, type of settlement, educational attainment and age, October 2009

	Total	Sex		Region			Type of settlement		Educational attainment				Age groups					
	October 2009	male	female	Central Serbia, without Belgrade	Belgrade	Vojvodina	urban	rural	Without educational attainment	low	medium	high	15-24	25-34	35-44	45-54	55-64	65 and over
Total	7528262	3662565	3865697	3872299	1648382	2007581	4310985	3217277	203462	2204367	3047414	895086	861208	838728	900413	1116586	1188254	1445139
Population aged 15 and over	6350328	3037253	3313075	3247787	1408129	1694412	3647997	2702331	203462	2204367	3047414	895086	861208	838728	900413	1116586	1188254	1445139
Active population	3107557	1740444	1367113	1646105	667534	793917	1693897	1413660	21096	722661	1790314	573487	253996	650483	775613	825758	461782	139925
Employed	2590188	1474017	1116171	1363788	577785	648614	1381713	1208475	20533	612982	1435113	521559	146111	508276	663075	717770	415410	139545
Unemployed	517369	266427	250942	282317	89749	145303	312185	205185	563	109679	355200	51927	107885	142208	112538	107987	46372	380
Inactive population	3242771	1296809	1945963	1601682	740595	900495	1954100	1288671	182366	1481706	1257100	321599	607212	188245	124800	290828	726472	1305215
Population aged under 15	1177934	625312	552622	624512	240253	313169	662988	514946	-	-	-	-	-	-	-	-	-	-
Working age population (15 - 64)	4905189	2423252	2481937	2460929	1085601	1358658	2887430	2017759	36872	1417640	2729471	721206	861208	838728	900413	1116586	1188254	-

**Total population structure, October 2009
- Republic of Serbia -**



2. Population aged 15 and over by activity, sex, region, type of settlement, educational attainment and age, October 2009

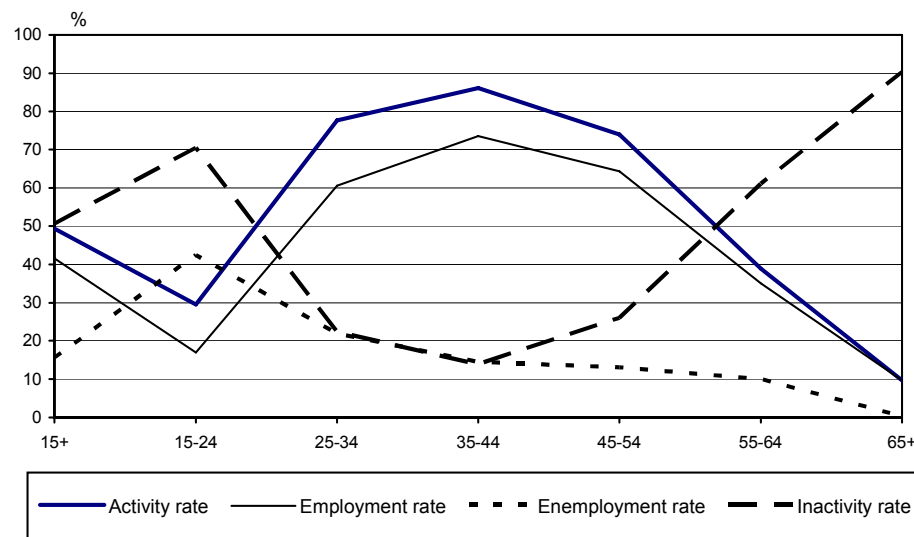
	Total	Sex		Region			Type of settlement		Educational attainment				Age groups					
	October 2009	male	female	Central Serbia, without Belgrade	Belgrade	Vojvodina	urban	rural	Without educational attainment	low	medium	high	15-24	25-34	35-44	45-54	55-64	65 and over
Total	6350328	3037253	3313075	3247787	1408129	1694412	3647997	2702331	203462	2204367	3047414	895086	861208	838728	900413	1116586	1188254	1445139
Active population	3107557	1740444	1367113	1646105	667534	793917	1693897	1413660	21096	722661	1790314	573487	253996	650483	775613	825758	461782	139925
Employed	2590188	1474017	1116171	1363788	577785	648614	1381713	1208475	20533	612982	1435113	521559	146111	508276	663075	717770	415410	139545
Of which: agricultural producers and family workers in agriculture	537231	303634	233597	420956	18711	97564	25151	512080	16725	363666	145668	11172	24109	51561	82921	112481	140232	125927
Unemployed	517369	266427	250942	282317	89749	145303	312185	205185	563	109679	355200	51927	107885	142208	112538	107987	46372	380
Inactive population	3242771	1296809	1945963	1601682	740595	900495	1954100	1288671	182366	1481706	1257100	321599	607212	188245	124800	290828	726472	1305215
Inactive, want and able to work	297089	122924	174165	149794	50930	96365	175009	122080	1659	83121	181380	30929	43671	49039	48717	88571	60782	6309
Inactive, want, but not able to work, because of:	137098	53668	83431	68487	21364	47247	80587	56512	1197	38625	85805	11471	47108	35973	19092	16775	13197	4954
Education or training	34373	15839	18534	21807	5909	6657	24052	10321	-	12299	21685	389	25054	9320	-	-	-	-
Compulsory military service	8755	8755		3695	877	4183	4702	4053	-	849	7587	319	8084	671	-	-	-	-
Cannot leave the current job in 2 weeks time	704	278	426	278	426		704	-	-	-	426	278	-	-	426	-	278	-
Personal and family reasons	47230	3374	43856	19451	8191	19588	28056	19174	215	7943	33297	5774	8858	20149	10116	5275	1961	870
Own illness or disability	32283	17497	14786	15141	3624	13519	15143	17140	534	14626	14940	2182	942	3169	5470	10178	9199	3326
Other reasons	13754	7925	5829	8116	2337	3301	7930	5824	448	2907	7869	2530	4171	2665	3080	1321	1759	758
Inactive and do not want to work	2242363	898425	1343938	1076943	530484	634936	1404743	837620	69179	1064825	890694	217665	516433	103233	56991	185482	652493	727731
75 and over	566221	221792	344429	306457	137817	121947	293761	272460	110330	295135	99221	61534	-	-	-	-	-	566221

3. Activity, employment, unemployment and inactivity rates by sex, region, type of settlement, educational attainment and age, October 2009

%

	April 2009	October 2009	male	female	Central Serbia, without Belgrade	Belgrade	Vojvodina	urban	rural	Without educational attainment	low	medium	high	15-24	25-34	35-44	45-54	55-64	65 and over	Working age population (15 - 64)
Activity rate	49,3	48,9	57,3	41,3	50,7	47,4	46,9	46,4	52,3	10,4	32,8	58,7	64,1	29,5	77,6	86,1	74,0	38,9	9,7	60,5
Employment rate	41,6	40,8	48,5	33,7	42,0	41,0	38,3	37,9	44,7	10,1	27,8	47,1	58,3	17,0	60,6	73,6	64,3	35,0	9,7	50,0
Unemployment rate	15,6	16,6	15,3	18,4	17,2	13,4	18,3	18,4	14,5	2,7	15,2	19,8	9,1	42,5	21,9	14,5	13,1	10,0	0,3	17,4
Inactivity rate	50,7	51,1	42,7	58,7	49,3	52,6	53,1	53,6	47,7	89,6	67,2	41,3	35,9	70,5	22,4	13,9	26,0	61,1	90,3	39,5

Activity, employment, unemployment and inactivity rates of population aged 15 and over, October 2009 - Republic of Serbia -



4. Structure of population aged 15 and over by age, sex, region, type of settlement, professional status and educational attainment, October 2009

%

	Total	Sex		Region			Type of settlement		Professional status				Educational attainment				
	October 2009	male	female	Central Serbia, without Belgrade	Belgrade	Vojvodina	urban	rural	active	employed	unemployed	inactive	Without educational attainment	low	medium	high	
Total																	
Aged 15-19	6,6	7,3	5,9	6,4	5,9	7,5	6,4	6,8	1,4	0,8	4,7	11,5	1,8	15,4	2,4	-	
20-24	7,0	7,8	6,3	6,4	7,3	8,0	7,5	6,3	6,7	4,9	16,2	7,2	0,7	2,0	12,5	2,0	
25-29	6,8	7,7	5,9	6,6	7,1	6,8	7,1	6,3	10,0	8,8	16,0	3,7	0,8	2,3	10,1	8,0	
30-34	6,4	6,7	6,2	6,5	6,6	6,2	7,0	5,7	10,9	10,8	11,5	2,1	1,0	3,0	8,5	8,9	
35-39	7,1	7,1	7,1	7,1	7,5	6,7	7,0	7,2	12,7	12,7	12,9	1,7	0,7	3,7	9,3	9,4	
40-44	7,1	7,1	7,1	6,9	6,3	8,1	6,8	7,5	12,2	12,9	8,8	2,1	0,9	3,9	9,6	7,8	
45-49	8,2	8,3	8,1	8,1	7,4	9,0	8,3	8,1	13,4	14,0	10,3	3,3	1,6	5,4	9,8	11,1	
50-54	9,4	9,2	9,5	9,3	9,6	9,4	9,4	9,4	13,2	13,7	10,6	5,7	2,5	8,1	10,5	10,2	
55-59	10,5	10,7	10,3	10,4	11,3	10,1	11,1	9,7	10,6	11,3	7,4	10,3	4,0	10,6	10,3	12,4	
60-64	8,2	7,9	8,5	8,1	8,2	8,4	8,6	7,7	4,2	4,8	1,6	12,1	4,1	10,0	6,5	10,7	
65-69	6,5	6,1	6,9	6,9	6,3	6,0	6,1	7,1	2,0	2,4	-	10,9	6,7	10,6	3,7	6,2	
70-74	6,7	6,0	7,3	6,8	6,7	6,4	6,6	6,8	1,3	1,5	0,1	11,9	17,3	10,3	3,5	6,2	
75 and over	9,5	8,1	10,9	10,5	9,9	7,4	8,1	11,5	1,3	1,5	-	17,5	57,8	14,7	3,3	7,1	

4a. Population aged 15 and over by age, sex, region, type of settlement, professional status and educational attainment, October 2009

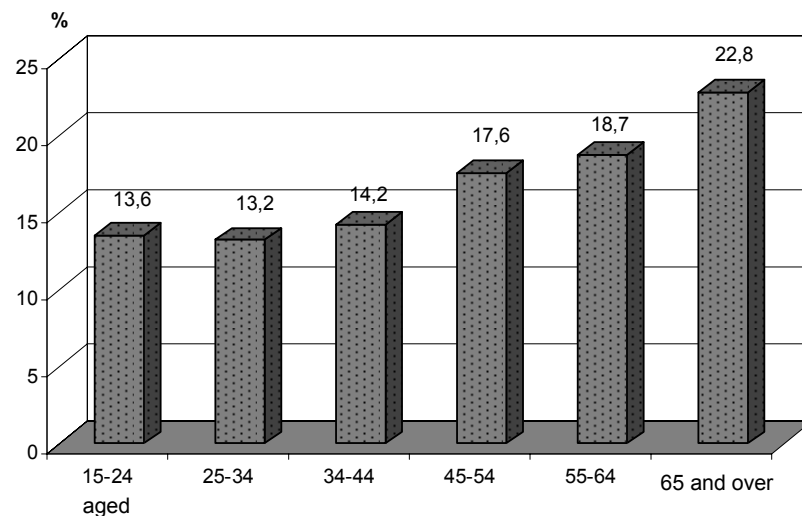
	Total	Sex		Region			Type of settlement		Professional status				Educational attainment			
	October 2009	male	female	Central Serbia, without Belgrade	Belgrade	Vojvodina	urban	rural	active	employed	unemployed	inactive	Without educational attainment	low	medium	high
Total	6350328	3037253	3313075	3247787	1408129	1694412	3647997	2702331	3107557	2590188	517369	3242771	203462	2204367	3047414	895086
Aged 15-19	417112	221008	196105	206324	83146	127642	233299	183813	44716	20429	24287	372397	3620	339347	74145	-
20-24	444096	236178	207918	206778	102551	134767	273476	170620	209281	125683	83598	234815	1430	44588	380257	17820
25-29	431015	233988	197027	215770	99854	115391	260727	170288	311525	228920	82605	119490	1680	50162	307237	71937
30-34	407713	202719	204994	210295	92700	104719	253838	153875	338958	279356	59602	68755	2025	65742	260162	79784
35-39	450577	215072	235505	231287	105108	114182	255158	195419	395462	328634	66828	55114	1349	81856	283503	83869
40-44	449837	216073	233764	224660	88307	136869	247110	202726	380151	334441	45710	69686	1865	86741	291390	69840
45-49	520774	253448	267326	263776	103875	153123	302927	217847	415349	362305	53044	105425	3295	118012	299921	99545
50-54	595812	280446	315366	301484	135492	158836	342526	253286	410409	355465	54944	185403	5050	178273	321064	91425
55-59	665430	324292	341138	336184	158728	170518	404630	260800	330341	292219	38122	335089	8228	233112	312951	111140
60-64	522824	240029	282794	264371	115842	142611	313740	209084	131441	123191	8250	391382	8330	219807	198839	95846
65-69	415573	185474	230099	225682	88538	101353	222953	192620	61198	61198	-	354375	13663	234579	111971	55360
70-74	424238	183372	240866	220468	94820	108950	241727	182512	39619	39240	380	384619	35226	227713	106227	55072
75 and over	605328	245155	360173	340708	139170	125451	295888	309440	39107	39107	-	566221	117700	324435	99745	63448

5. Structure of population aged 15 and over by professional status, sex, region, type of settlement, educational attainment and age, October 2009

%

	Total	Sex		Region			Type of settlement		Professional status			Educational attainment			
	October 2009	male	female	Central Serbia, without Belgrade	Belgrade	Vojvodina	urban	rural	active	employed	unemployed	inactive	Without educational attainment	low	medium
Total	100%														
Aged 15-24	13,6	15,1	12,2	12,7	13,2	15,5	13,9	13,1	5,6	20,9	18,7	2,5	17,4	14,9	2,0
25-34	13,2	14,4	12,1	13,1	13,7	13,0	14,1	12,0	19,6	27,5	5,8	1,8	5,3	18,6	17,0
34-44	14,2	14,2	14,2	14,0	13,7	14,8	13,8	14,7	25,6	21,8	3,8	1,6	7,6	18,9	17,2
45-54	17,6	17,6	17,6	17,4	17,0	18,4	17,7	17,4	27,7	20,9	9,0	4,1	13,4	20,4	21,3
55-64	18,7	18,6	18,8	18,5	19,5	18,5	19,7	17,4	16,0	9,0	22,4	8,1	20,5	16,8	23,1
65 and over	22,8	20,2	25,1	24,2	22,9	19,8	20,8	25,3	5,4	0,1	40,2	81,9	35,7	10,4	19,4

Structure of population aged 15 and over by professional status, October 2009
- Republic of Serbia -



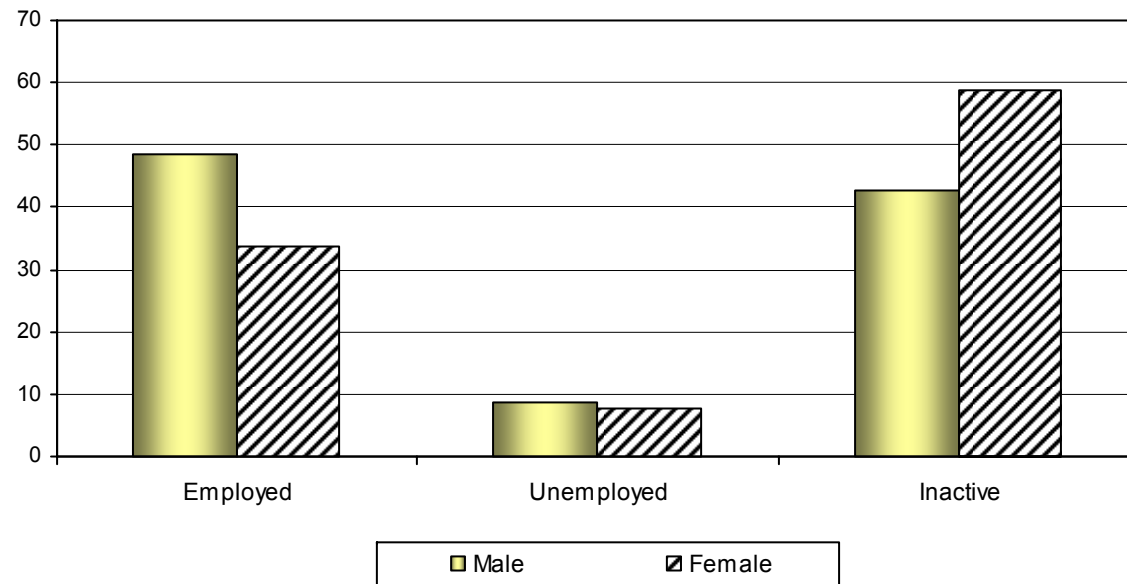
6. Structure of population aged 15 and over by activity, sex, region, type of settlement, educational attainment, age and subjective view of financial situation in their own household, October 2009

%

	Total	Sex		Region			Type of settlement		Educational attainment			Age groups						Financial situation in the household										
	October 2009	male	female	Central Serbia, without Belgrade	Belgrade	Vojvodina	urban	rural	Without educational attainment	low	medium	high	15-24	25-34	35-44	45-54	55-64	65 and over	Very good	Mainly good	Mainly bad	Bad						
Total																												
Employed	40,8	48,5	33,7	42,0	41,0	38,3	37,9	44,7	10,1	27,8	47,1	58,3	17,0	60,6	73,6	64,3	35,0	9,7	47,9	46,8	42,2	33,4						
Unemployed	8,1	8,8	7,6	8,7	6,4	8,6	8,6	7,6	0,3	5,0	11,7	5,8	12,5	17,0	12,5	9,7	3,9	0,0	3,5	3,6	7,6	13,2						
Inactive	51,1	42,7	58,7	49,3	52,6	53,1	53,6	47,7	89,6	67,2	41,3	35,9	70,5	22,4	13,9	26,0	61,1	90,3	48,6	49,6	50,2	53,4						

100%

6. Structure of population aged 15 and over by activity, sex, region, type of settlement, educational attainment, age and subjective view of financial situation in their own household, October 2009

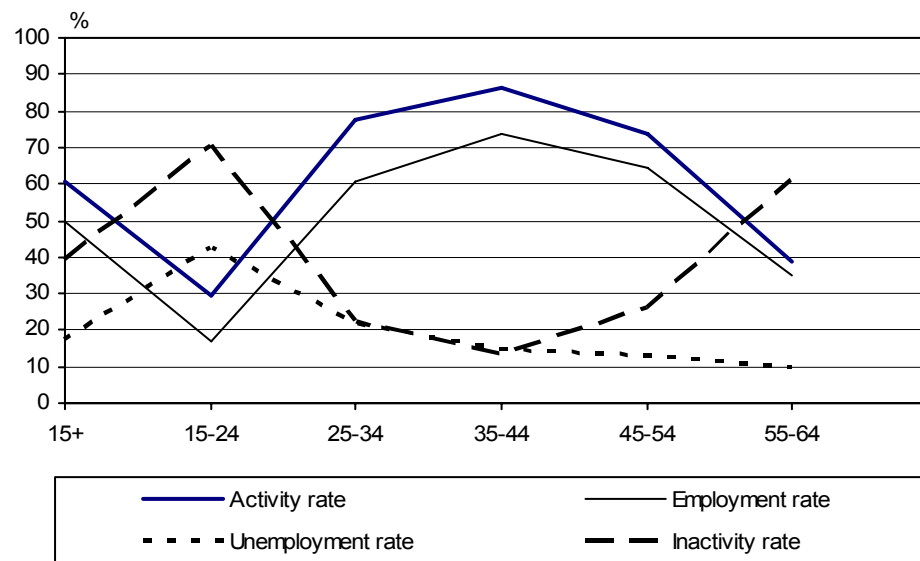


7. Working-age population (15-64) by activity, sex, region, type of settlement, educational attainment and age, October 2009

%

	Total	Sex		Region			Type of settlement		Educational attainment				Age groups				
	October 2009	male	female	Central Serbia, without Belgrade	Belgrade	Vojvodina	urban	rural	Without educational attainment	low	medium	high	15-24	25-34	35-44	45-54	55-64
Total	4905189	2423252	2481937	2460929	1085601	1358658	2887430	2017759	36872	1417640	2729471	721206	861208	838728	900413	1116586	1188254
Active population	2967632	1658303	1309329	1532592	659815	775225	1679658	1287974	7081	615159	1779169	566224	253996	650483	775613	825758	461782
Employed	2450643	1391875	1058767	1250275	570065	630302	1367474	1083169	6517	505860	1423968	514297	146111	508276	663075	717770	415410
Unemployed	516990	266427	250562	282317	89749	144923	312185	204805	563	109299	355200	51927	107885	142208	112538	107987	46372
Inactive population	1937556	764949	1172607	928337	425786	583433	1207771	729785	29792	802481	950302	154982	607212	188245	124800	290828	726472
Activity rate	60,5	68,4	52,8	62,3	60,8	57,1	58,2	63,8	19,2	43,4	65,2	78,5	29,5	77,6	86,1	74,0	38,9
Employment rate	50,0	57,4	42,7	50,8	52,5	46,4	47,4	53,7	17,7	35,7	52,2	71,3	17,0	60,6	73,6	64,3	35,0
Unemployment rate	17,4	16,1	19,1	18,4	13,6	18,7	18,6	15,9	8,0	17,8	20,0	9,2	42,5	21,9	14,5	13,1	10,0
Inactivity rate	39,5	31,6	47,2	37,7	39,2	42,9	41,8	36,2	80,8	56,6	34,8	21,5	70,5	22,4	13,9	26,0	61,1

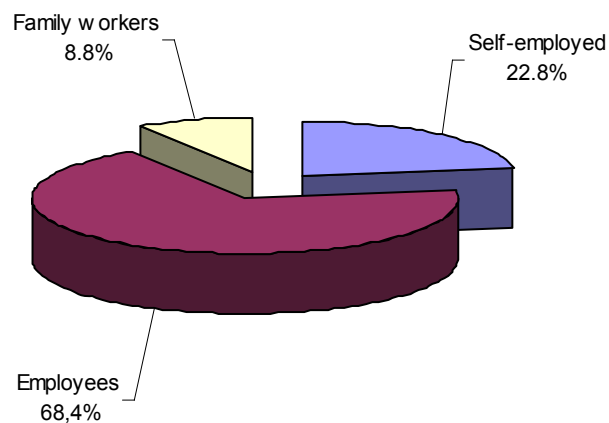
Rate of activity, employment, unemployment and inactivity for working-age population, October 2009
- Republic of Serbia -



8. Structure of employed persons by employment status, sex, region, type of settlement, educational attainment and age, October 2009

	Total	Sex		Region			Type of settlement		Educational attainment				Age groups						
	October 2009	male	female	Central Serbia, without Belgrade	Belgrade	Vojvodina	urban	rural	Without educational attainment	low	medium	high	15-24	25-34	35-44	45-54	55-64	65 and over	
Total																			100%
Self-employed	22,8	28,9	14,9	28,2	8,9	24,0	13,1	33,9	37,7	44,1	17,9	10,8	13,6	12,6	18,2	21,5	33,3	67,3	
Employees	68,4	66,5	70,8	58,5	89,4	70,2	85,8	48,4	15,9	32,4	77,2	88,3	72,2	80,2	75,7	73,2	54,0	3,9	
Family workers	8,8	4,6	14,3	13,3	1,7	5,8	1,0	17,7	46,4	23,5	4,9	0,9	14,2	7,2	6,1	5,3	12,6	28,8	

Structure of employed persons by employment status, October 2009.
- Republic of Serbia -



9. Structure of employed persons by sections of activities, sex, region, type of settlement, educational attainment and age, October 2009

%

	Total	Sex		Region			Type of settlement		Educational attainment				Age groups						
	October 2009	male	female	Central Serbia, without Belgrade	Belgrade	Vojvodina	urban	rural	Without educational attainment	low	medium	high	15-24	25-34	35-44	45-54	55-64	65 and over	
Total																			100%
Agriculture, forestry and water works supply	23,9	24,7	22,9	33,1	3,9	22,5	3,6	47,2	91,2	65,3	12,9	3,1	20,6	12,4	15,4	18,6	38,8	93,0	
Fishing	0,1	0,1	-	0,1	0,1	0,1	0,1	0,1	-	0,1	0,1	-	-	0,1	0,1	0,1	-	-	
Mining and quarrying	1,1	1,5	0,5	1,6	0,8	0,2	0,7	1,5	-	1,1	1,4	0,1	0,6	0,6	1,7	1,3	0,8	-	
Manufacturing	17,0	19,9	13,2	18,2	12,3	18,8	18,6	15,3	-	9,9	21,9	12,9	16,5	15,3	19,9	21,0	13,3	1,0	
Electricity, gas and water supply	1,8	2,7	0,5	1,8	2,0	1,5	2,6	0,8	-	0,6	2,1	2,3	-	1,5	2,2	2,1	2,2	-	
Construction	5,2	8,1	1,4	4,9	4,8	6,4	5,7	4,7	2,8	5,5	5,7	3,7	5,9	5,7	5,2	6,3	3,9	0,7	
Wholesale and retail trade, repair	13,9	12,0	16,5	11,3	18,1	15,8	17,6	9,8	2,4	4,0	20,1	9,0	22,9	21,3	14,9	12,7	6,9	0,6	
Hotels and restaurants	2,9	2,4	3,7	2,4	3,9	3,2	3,9	1,9	-	1,2	4,3	1,4	5,2	4,5	2,7	3,4	0,8	-	
Transport, storage and communications	6,0	8,2	3,1	4,7	9,5	5,5	7,6	4,2	-	2,0	7,8	5,8	6,8	7,7	6,3	5,4	5,9	-	
Financial intermediation	2,1	1,5	3,0	1,2	4,9	1,6	3,5	0,6	-	0,4	1,9	5,0	1,2	3,0	2,2	2,2	1,9	-	
Real estate activities, renting	3,4	3,3	3,6	2,0	7,3	3,1	5,4	1,2	0,7	0,8	2,9	8,1	2,4	4,0	3,8	3,3	3,7	1,2	
Public administration and social security	4,9	4,9	5,0	4,4	6,0	5,1	6,6	3,0	-	0,6	4,6	11,0	2,5	5,8	5,9	5,1	4,4	0,3	
Education	5,8	3,9	8,3	5,5	8,4	4,2	8,0	3,3	-	3,5	1,3	21,2	1,5	5,5	7,5	5,2	7,5	1,5	
Health and social work	6,8	2,2	12,8	5,5	9,4	7,2	9,5	3,7	-	1,7	7,2	11,9	5,7	6,1	7,4	8,7	6,2	0,2	
Other community, social and personal service activities	4,6	4,4	4,8	3,4	8,2	3,9	6,3	2,7	2,8	2,7	5,5	4,4	8,2	5,9	4,6	4,1	3,5	1,5	
Households with employed persons	0,2	0,0	0,5	0,1	0,1	0,6	0,3	0,2	-	0,5	0,2	-	-	0,3	0,2	0,3	0,2	-	
Extra-territorial organizations and bodies	0,1	0,0	0,1	0,2	0,1	0,1	0,1	-	-	-	0,0	0,2	-	0,3	-	-	-	-	

9a. Employed persons by sections of activities, sex, region, type of settlement, educational attainment and age, October 2009

	Total	Sex		Region			Type of settlement		Educational attainment				Age groups					
	October 2009	male	female	Central Serbia, without Belgrade	Belgrade	Vojvodina	urban	rural	Without educational attainment	low	medium	high	15-24	25-34	35-44	45-54	55-64	65 and over
Total	2590188	1474017	1116171	1363788	577785	648614	1381713	1208475	20533	612982	1435113	521559	146111	508276	663075	717770	415410	139545
Agriculture, forestry and water works supply	620258	364784	255474	451390	22778	146090	49966	570292	18723	400150	185029	16357	30036	63138	102213	133840	161231	129801
Fishing	1927	1927	-	879	711	337	830	1097	-	830	1097	-	-	723	711	493	-	-
Mining and quarrying	27726	22349	5377	21520	4849	1358	9986	17740	-	6662	20672	392	878	2893	11270	9361	3323	-
Manufacturing	441472	293798	147674	247994	71219	122259	256474	184998	-	60413	313949	67110	24171	77734	132175	150766	55189	1436
Electricity, gas and water supply	45984	40320	5664	24490	11708	9787	35984	10001	-	3672	30437	11876	-	7606	14263	15013	9102	-
Construction	135478	119380	16098	66263	27512	41703	78844	56635	580	33886	81760	19252	8666	29188	34794	45501	16402	927
Wholesale and retail trade, repair	361326	176728	184598	153848	104678	102800	242805	118521	500	24664	289111	47051	33447	108239	98715	91475	28590	860
Hotels and restaurants	76133	34829	41304	32649	22560	20923	53622	22511	-	7266	61429	7437	7606	22762	17780	24460	3524	-
Transport, storage and communications	154646	120395	34250	64194	55004	35448	104402	50243	-	12191	112422	30033	9928	39267	42007	38858	24586	-
Financial intermediation	55326	22063	33263	16343	28332	10652	48269	7057	-	2584	26658	26084	1725	15135	14705	15900	7861	-
Real estate activities, renting	89257	48963	40294	27041	42008	20208	74985	14272	146	5104	41566	42440	3525	20222	24867	23750	15242	1650
Public administration and social security	127665	71552	56113	59839	34479	33347	91299	36366	-	3974	66535	57156	3633	29274	39379	36789	18186	404
Education	150522	57626	92895	74436	48701	27384	111059	39463	-	21681	18370	110471	2128	27930	49848	37330	31209	2077
Health and social work	176332	33064	143268	75057	54411	46864	131565	44767	-	10179	104026	62127	8321	30896	48869	62325	25665	256
Other community, social and personal service activities	118691	64991	53700	46284	47190	25216	86509	32182	584	16849	78362	22895	12047	30195	30312	29459	14544	2134
Households with employed persons	6028	707	5321	1561	570	3897	3698	2330	-	2877	3151	-	-	1657	1167	2449	755	-
Extra-territorial organizations and bodies	1415	538	877	-	1076	339	1415	-	-	-	538	877	-	1415	-	-	-	-

10. Structure of employed persons by occupation, sex, region, type of settlement, educational attainment and age, October 2009

%

	Total	Sex		Region			Type of settlement		Educational attainment				Age groups							
	October 2009	male	female	Central Serbia, without Belgrade	Belgrade	Vojvodina	urban	rural	Without educational attainment	low	medium	high	15-24	25-34	35-44	45-54	55-64	65 and over		
Total																				100%
Legislators, senior officials and directors - managers	5,6	6,3	4,6	5,1	4,8	7,2	7,5	3,3	-	0,7	5,3	12,3	1,7	4,8	7,2	6,4	5,5	0,5		
Professionals	11,5	8,8	15,1	8,5	23,4	7,4	19,2	2,8	-	0,2	1,5	52,9	2,5	11,2	12,5	12,6	14,6	3,2		
Technicians and associate professionals	14,1	10,5	18,9	10,6	22,3	14,1	20,9	6,3	-	0,7	17,7	20,4	13,3	16,4	16,0	14,7	11,7	0,8		
Clerks	6,0	4,8	7,7	5,0	7,9	6,4	7,7	4,1	-	2,7	8,3	3,9	4,8	8,1	5,7	7,1	4,5	-		
Service and sales workers	12,9	9,5	17,4	11,5	15,2	13,8	15,4	10,1	2,4	4,4	20,1	3,5	27,1	19,4	13,3	11,8	5,5	0,4		
Skilled agricultural and fishery workers	20,9	21,7	19,9	30,8	3,6	15,7	2,3	42,2	82,8	58,6	10,8	2,2	16,7	10,2	12,9	15,5	34,8	90,0		
Craft and related trades workers	12,8	19,1	4,5	13,1	9,9	14,7	12,6	12,9	-	8,9	18,6	1,9	16,8	13,3	14,5	13,7	10,1	1,3		
Plant and machine operators and assemblers	7,3	11,4	1,8	6,8	6,6	8,9	7,0	7,5	-	5,9	10,2	1,2	9,0	8,2	7,6	8,5	5,0	0,5		
Elementary occupations	8,6	7,4	10,1	8,3	6,1	11,5	6,9	10,5	14,8	17,9	7,3	1,1	8,0	7,2	9,9	9,7	8,4	3,2		
Military officers	0,3	0,6		0,3	0,4	0,2	0,4	0,2	-	-	0,4	0,5	-	1,0	0,4	0,1	-	-		

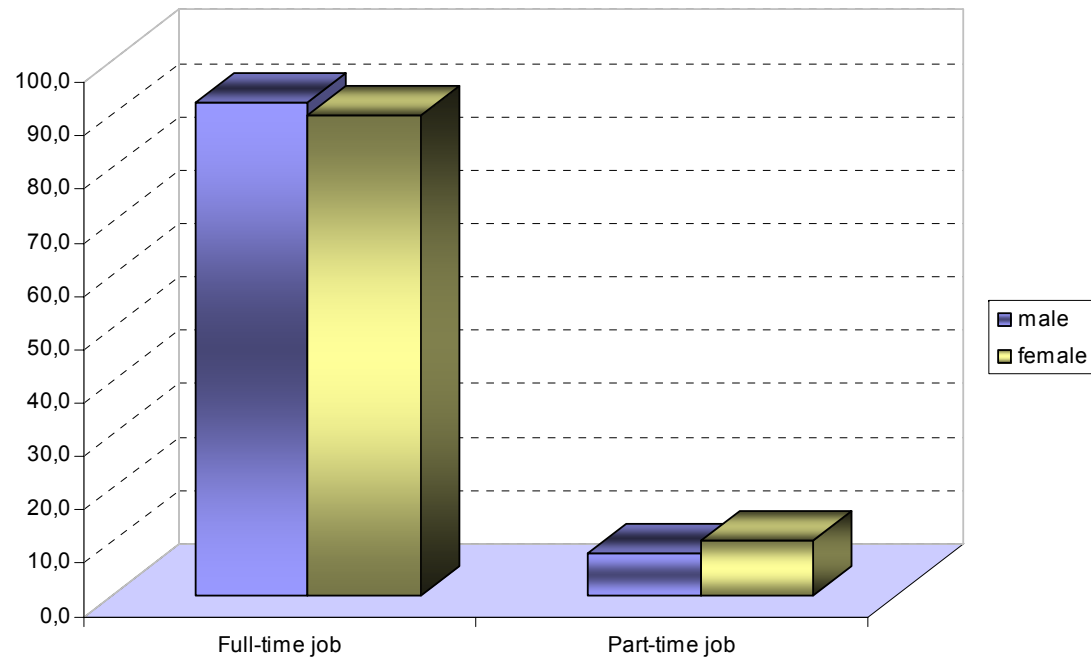
10a. Employed persons by occupation, sex, region, type of settlement, educational attainment and age, October 2009

	Total	Sex		Region			Type of settlement		Educational attainment				Age groups					
	October 2009	male	female	Central Serbia, without Belgrade	Belgrade	Vojvodina	urban	rural	Without educational attainment	low	medium	high	15-24	25-34	35-44	45-54	55-64	65 and over
Total	2590188	1474017	1116171	1363788	577785	648614	1381713	1208475	20533	612982	1435113	521559	146111	508276	663075	717770	415410	139545
Legislators, senior officials and directors - managers	143783	92393	51391	69549	27460	46774	103351	40432	-	4021	75404	64358	2547	24468	47540	45762	22710	756
Professionals	298773	130273	168500	115883	135006	47884	264637	34136	-	1346	21396	276031	3589	56988	82826	90194	60665	4511
Technicians and associate professionals	364646	154085	210560	144096	128984	91565	288485	76161	-	4404	253727	106514	19469	83416	106356	105825	48460	1120
Clerks	156079	70316	85763	68769	45527	41784	106985	49094	-	16529	118951	20599	7062	41371	37942	50888	18817	-
Service and sales workers	334565	140534	194031	156945	87897	89723	212915	121650	500	26953	288884	18228	39613	98781	88135	84602	22841	592
Skilled agricultural and fishery workers	542497	320222	222275	419756	20758	101983	32063	510434	16995	359455	154400	11646	24376	51707	85485	110930	144377	125623
Craft and related trades workers	330711	280944	49767	178734	56912	95065	174509	156202	-	54482	266509	9720	24515	67754	96433	98134	42036	1839
Plant and machine operators and assemblers	188159	167526	20633	92468	37907	57785	97096	91063	-	36022	145816	6321	13212	41890	50505	61314	20567	671
Elementary occupations	222739	109489	113250	112828	35104	74808	95958	126781	3038	109769	104345	5587	11729	36679	65480	69481	34937	4432
Military officers	8236	8236	-	4762	2230	1244	5713	2523	-	-	5680	2555	-	5221	2373	642	-	-

11. Structure of employed persons by type of working time, sex, region, type of settlement, employment status, educational attainment and age, October 2009

	Total	Sex		Region			Type of settlement		Employment status			Educational attainment			Age groups						
		October 2009	male	female	Central Serbia, without Belgrade	Belgrade	Vojvodina	urban	rural	Self-employed	employees	Family workers	Without educational attainment	low	medium	high	15-24	25-34	35-44	45-54	55-64
Total		100%																			
Full-time job	91,3	92,3	89,9	89,8	95,2	90,8	95,2	86,8	81,0	97,6	68,9	50,9	81,5	94,5	95,6	87,7	93,7	95,2	95,1	86,5	62,5
Part-time job	8,7	7,7	10,1	10,2	4,8	9,2	4,8	13,2	19,0	2,4	31,1	49,1	18,5	5,5	4,4	12,3	6,3	4,8	4,9	13,5	37,5

**Structure of employed persons by type of working time and sex, October 2009
- Republic of Serbia -**



12. Employed persons by number of hours usually worked per week, sex, region, type of settlement, employment status, educational attainment and age, October 2009

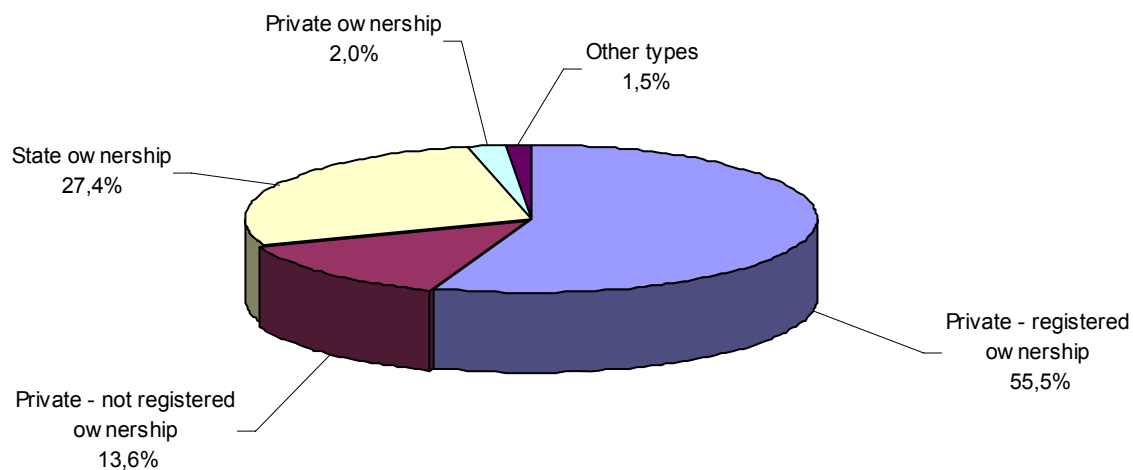
	Total	Sex		Region			Type of settlement		Employment status			Educational attainment			Age groups						
	October 2009	male	female	Central Serbia, without Belgrade	Belgrade	Vojvodina	urban	rural	Self-employed	employees	Family workers	Without educational attainment	low	medium	high	15-24	25-34	35-44	45-54	55-64	65 and over
Total	2590188	1474017	1116171	1363788	577785	648614	1381713	1208475	591500	1770412	228275	20533	612982	1435113	521559	146111	508276	663075	717770	415410	139545
1 hour	220	-	220	-	-	220	220	-	220	-	-	-	220	-	-	-	-	220	-	-	-
2-4 hours	4547	1399	3148	586	847	3114	2533	2014	1603	1715	1229	-	2504	887	1156	272	981	-	1099	1801	394
5-9	7383	3447	3936	2471	2695	2217	5107	2276	3699	2887	798	-	1609	3858	1916	508	1128	1526	1683	1159	1379
10-14	20412	10111	10301	9425	3108	7879	6835	13577	9993	2294	8124	1132	10228	7495	1556	1503	1656	1498	3049	7047	5658
15-19	20308	9368	10940	8998	4702	6609	9309	10999	8469	5417	6423	1169	7834	7867	3438	1956	4060	2405	3494	3956	4436
20-29	96419	42577	53842	65032	10900	20487	25807	70612	43625	18605	34189	5433	45927	37335	7724	10230	17777	11761	15402	18204	23046
30-39	174497	87382	87115	92225	45904	36368	78049	96448	64467	85406	24623	4332	64380	67548	38238	8230	22744	36284	44172	37836	25230
40-49	1777930	974878	803052	873194	460848	443888	1100436	677494	209587	1487747	80596	4668	280129	1067151	425982	97181	380066	499156	510359	254480	36689
50-59	233632	154212	79420	135856	30579	67196	77552	156080	103831	94923	34879	2799	89933	119058	21842	14892	43263	50616	65018	39912	19930
60 hours and more	254531	190334	64197	176002	18201	60328	75864	178666	145697	71419	37415	1000	110218	123604	19709	11030	36600	59609	73494	51014	22783
Unknown	309	309	-	-	-	309	-	309	309	-	-	-	-	309	-	309	-	-	-	-	-

13. Employed persons by type of ownership, sex, region, type of settlement, employment status, educational attainment and age, October 2009

%

	Укупно	Пол		Регион			Тип насеља		Запослена лица			Образовни ниво			Старосне групе							
	October 2009	male	female	Central Serbia, without Belgrade	Belgrade	Vojvodina	urban	rural	Self-employed	employees	Family workers	Without educational attainment	low	medium	high	15-24	25-34	35-44	45-54	55-64	65 and over	
Total																						100%
Private – registered ownership	55,5	58,0	52,2	55,0	51,5	60,2	53,5	57,8	61,8	52,9	59,5	28,9	54,0	62,5	39,1	76,1	62,7	54,9	52,6	46,9	51,4	
Private – not registered ownership	13,6	14,1	12,9	17,9	4,1	12,8	4,6	23,7	36,2	2,5	40,5	66,3	33,8	8,2	2,4	10,0	8,9	9,4	11,0	20,5	46,5	
State ownership	27,4	24,1	31,9	24,1	39,2	24,0	37,2	16,2	0,1	40,1	-	2,8	10,2	25,3	54,5	11,5	25,5	31,8	31,8	29,4	1,9	
Social ownership	2,0	2,3	1,5	1,5	3,1	2,0	2,5	1,3	-	2,9	-	-	0,5	2,5	2,2	0,9	2,0	2,4	2,3	1,8	-	
Other types of ownership	1,5	1,6	1,4	1,4	2,1	1,2	2,0	0,9	1,9	1,6	-	2,0	1,4	1,5	1,7	1,5	0,8	1,5	2,3	1,4	0,2	

Structure of employed persons by type of type of ownership, October 2009
- Republic of Serbia -



14. Structure of employed persons by specific types of working time, sex, region, type of settlement, employment status, educational attainment and age, October 2009

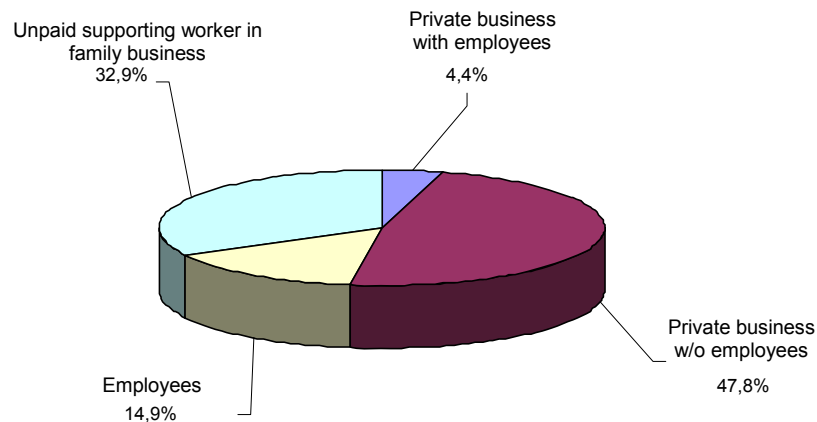
%

	Total	Sex		Region			Type of settlement		Employment status			Educational attainment				Age groups							
	October 2009	male	female	Central Serbia, without Belgrade	Belgrade	Vojvodina	urban	rural	Self-employed	employees	Family workers	Without educational attainment	low	medium	high	15-24	25-34	35-44	45-54	55-64	65 and over		
Evening work – all																							100%
Often	20,2	21,8	18,1	22,6	15,8	19,1	18,8	21,8	25,7	18,5	19,2	10,4	19,8	23,5	11,9	23,4	23,1	20,6	19,4	17,7	15,2		
Sometimes	24,6	26,7	21,7	26,0	23,3	22,8	21,4	28,2	29,8	21,7	33,0	32,2	29,6	24,3	19,0	26,3	24,0	24,0	23,8	25,1	30,3		
Never	55,3	51,5	60,2	51,5	60,9	58,1	59,8	50,0	44,5	59,8	47,8	57,4	50,6	52,1	69,2	50,3	53,0	55,4	56,8	57,1	54,5		
Night work - all																							100%
Often	7,3	9,5	4,4	6,8	7,7	8,1	8,0	6,6	4,5	9,0	1,8		3,3	10,2	4,3	11,4	10,1	8,1	6,6	4,7	0,7		
Sometimes	9,9	12,3	6,8	9,8	9,5	10,7	9,8	10,1	10,5	10,1	7,3	8,3	8,7	11,5	7,2	10,3	12,5	9,3	9,8	10,1	3,9		
Never	82,7	78,1	88,8	83,5	82,8	81,2	82,2	83,4	85,0	80,9	90,9	91,7	87,9	78,3	88,5	78,3	77,5	82,6	83,6	85,2	95,4		
Saturday work – all																							100%
Often	43,6	46,2	40,1	52,2	23,9	42,9	31,1	57,9	69,7	31,1	72,5	71,0	63,6	44,3	16,9	44,4	44,9	40,1	40,8	44,0	67,4		
Sometimes	28,8	30,9	26,0	26,0	30,9	32,8	30,9	26,4	23,2	31,3	23,4	23,5	25,9	30,8	26,7	41,2	28,5	28,8	27,8	26,9	27,4		
Never	27,7	23,0	33,9	21,8	45,2	24,3	38,1	15,7	7,1	37,5	4,1	5,5	10,5	24,8	56,4	14,4	26,6	31,1	31,4	29,1	5,2		
Sunday work – all																							100%
Often	22,5	24,1	20,4	27,0	13,4	21,0	14,1	32,1	43,6	12,7	43,3	46,1	36,9	21,5	7,2	16,4	20,2	20,3	21,1	26,1	43,5		
Sometimes	22,8	25,7	18,9	24,2	18,8	23,5	19,4	26,7	26,5	20,1	34,3	24,8	29,9	23,4	12,7	30,3	23,4	21,4	20,5	23,2	29,9		
Never	54,7	50,2	60,7	48,8	67,8	55,6	66,6	41,2	29,9	67,2	22,4	29,1	33,1	55,1	80,1	53,3	56,4	58,3	58,3	50,7	26,6		
Working at home - all																							100%
Often	5,5	5,2	5,9	5,3	5,6	6,0	3,4	8,0	13,6	1,4	16,2	13,3	10,6	3,6	4,5	2,8	2,9	4,0	4,7	9,2	17,9		
Sometimes	3,4	3,4	3,4	2,0	5,4	4,3	3,8	2,9	4,7	2,8	4,1	2,0	3,5	2,5	5,7	3,6	3,9	3,1	3,1	3,7	2,6		
Never	91,1	91,5	90,7	92,7	89,0	89,7	92,9	89,1	81,7	95,8	79,7	84,7	86,0	93,9	89,8	93,6	93,2	92,9	92,2	87,1	79,6		

15. Structure of employed persons with supplementary job, by employment status, sex, region, type of settlement, educational attainment and age, October 2009

	%																		
	Total	Sex		Region			Type of settlement		Educational attainment			Age groups							
	October 2009	male	female	Central Serbia, without Belgrade	Belgrade	Vojvodina	urban	rural	Without educational attainment	low	medium	high	15-24	25-34	35-44	45-54	55-64	65 and over	
Total	100%																		
Private business with employees	4,4	3,9	5,9	4,2	5,7	4,1	8,2	2,9	0,0	1,4	5,0	6,8	11,8	3,6	4,1	5,4	3,0	0,0	
Private business w/o employees	47,8	49,8	42,1	40,7	55,0	57,1	59,2	43,1	100,0	54,7	41,2	57,6	29,6	32,0	46,6	49,0	63,5	100,0	
Employee	14,9	12,7	21,1	10,3	14,6	24,1	23,1	11,6	0,0	15,1	13,7	18,2	12,1	24,5	13,6	14,1	12,4	0,0	
Unpaid supporting worker in family business	32,9	33,6	30,9	44,8	24,7	14,6	9,5	42,4	0,0	28,8	40,1	17,4	46,5	39,9	35,8	31,6	21,0	0,0	

Structure of employed persons with supplementary job, by employment status, October 2009 - Republic of Serbia -

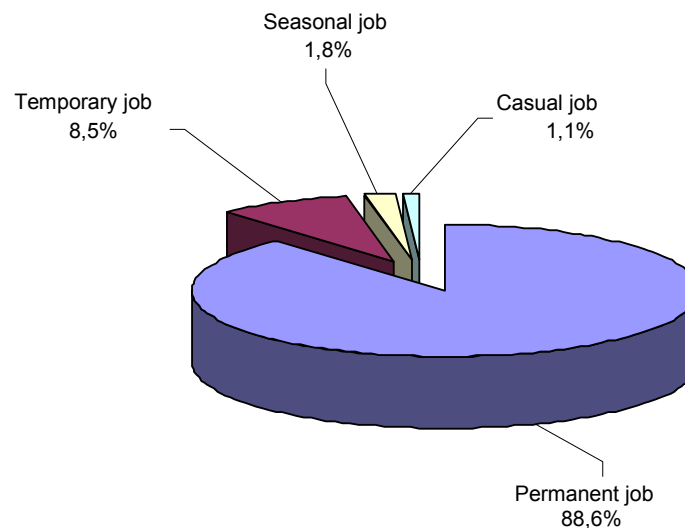


16. Structure of employees by type of job, sex, region, type of settlement, educational attainment and age, October 2009

%

	Total	Sex		Region			Type of settlement		Educational attainment				Age groups						
	October 2009	male	female	Central Serbia, without Belgrade	Belgrade	Vojvodina	urban	rural	Without educational attainment	low	medium	high	15-24	25-34	35-44	45-54	55-64	65 and over	
Total		100%																	
Permanent job	88,6	87,8	89,5	89,2	91,5	84,2	90,3	85,1	-	78,3	88,9	92,8	63,8	82,2	90,8	93,5	95,2	92,7	
Temporary job	8,5	8,6	8,2	7,9	6,9	11,2	7,8	9,8	27,4	10,1	8,8	6,8	30,2	14,6	6,7	3,7	2,3	-	
Seasonal job	1,8	2,2	1,3	1,9	1,0	2,7	1,1	3,3	60,4	8,4	1,2	0,1	2,5	1,7	1,7	2,1	1,4	7,3	
Casual job	1,1	1,3	0,9	1,0	0,6	1,9	0,8	1,7	12,1	3,2	1,1	0,3	3,5	1,4	0,9	0,7	1,2	-	

**Structure of employed persons by type of job, October 2009
- Republic of Serbia -**

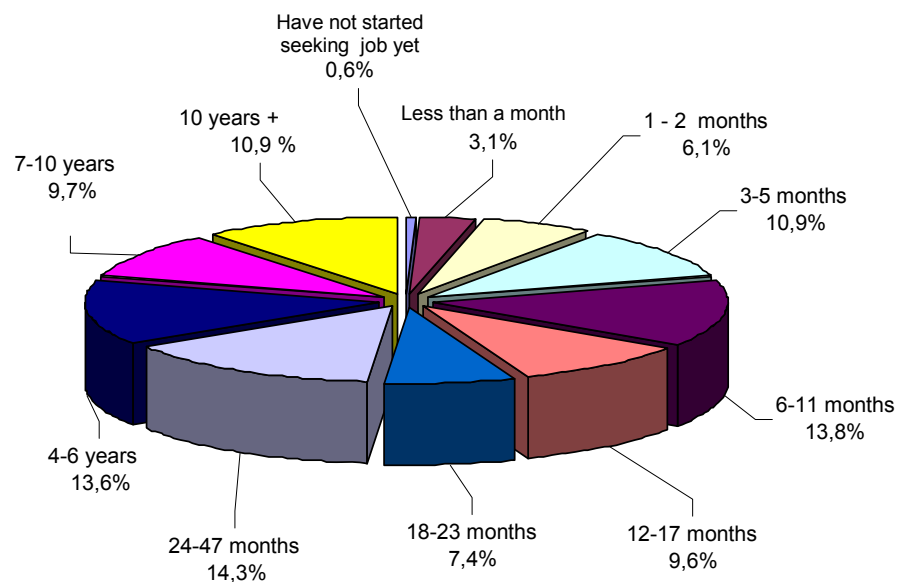


17. Structure of unemployed persons by length of job seeking, sex, region, type of settlement, educational attainment and age, October 2009

%

	Total	Sex		Region			Type of settlement		Educational attainment				Age groups						
	October 2009	male	female	Central Serbia, without Belgrade	Belgrade	Vojvodina	urban	rural	Without educational attainment	low	medium	high	15-24	25-34	35-44	45-54	55-64	65 and over	
Total																			100%
Have not started seeking job yet	0,6	0,5	0,6	0,3	1,0	0,8	0,4	0,8	-	0,7	0,6	-	1,3	-	1,1	0,2	-	-	
Less than a month	3,1	3,0	3,1	2,7	0,8	5,2	3,3	2,8	-	1,7	3,2	4,9	4,1	3,6	2,3	2,6	2,2	-	
1 - 2 months	6,1	5,3	7,1	4,8	5,7	9,0	6,2	6,0	-	4,3	5,7	12,6	7,4	7,4	4,6	5,6	4,2	-	
3-5	10,9	10,6	11,3	9,6	11,6	13,0	10,3	11,9	-	6,8	12,1	11,6	15,5	11,5	11,4	6,8	7,1	-	
6-11	13,8	14,1	13,5	12,1	22,0	12,3	14,5	12,9	-	11,9	13,7	19,3	16,5	16,6	10,1	12,2	12,0	-	
12-17	9,6	9,8	9,5	9,0	8,4	11,6	10,3	8,6	-	7,4	10,0	12,3	16,7	8,9	6,3	9,4	4,3	-	
18-23	7,4	7,8	6,9	6,3	11,3	7,0	6,8	8,2	-	9,0	7,3	4,6	11,1	5,9	6,2	7,2	6,3	-	
24-47 months	14,3	13,5	15,2	16,2	9,9	13,5	14,6	13,9	-	15,0	15,0	8,5	18,9	12,6	11,2	15,1	14,9	-	
4-6 years	13,6	14,5	12,6	15,4	11,9	11,2	13,5	13,7	-	12,9	13,8	13,8	7,4	14,4	13,3	14,4	24,7	-	
7-10 years	9,7	11,5	7,7	11,7	10,0	5,5	9,4	10,0	50,4	11,4	9,5	6,9	1,2	11,7	12,0	13,0	9,7	-	
10 years and longer	10,9	9,3	12,5	12,0	7,4	10,9	10,6	11,3	49,6	18,9	9,1	5,4	-	7,4	21,4	13,5	14,5	100	

Structure of unemployed persons by length of job seeking, October 2009
- Republic of Serbia -



18. Unemployed persons by previous employment status, sex, region, type of settlement, educational attainment and age, October 2009

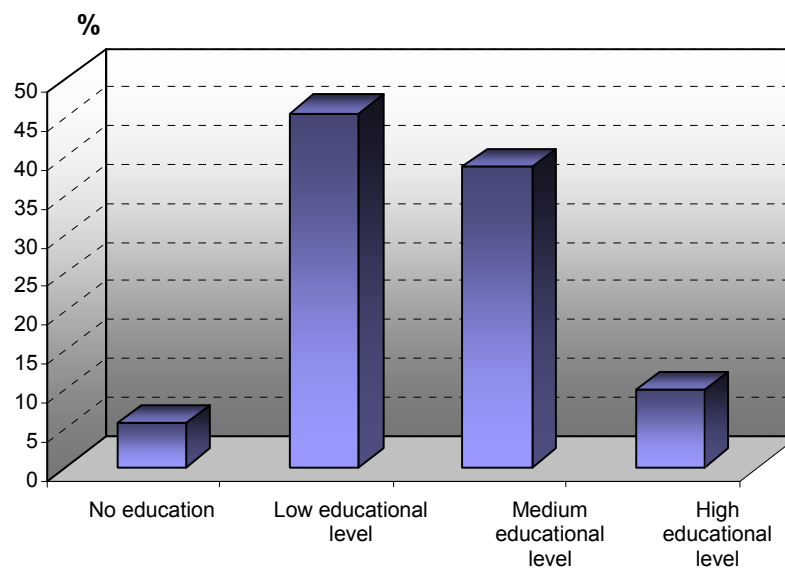
	Total	Sex		Region			Type of settlement		Educational attainment			Age groups						
	October 2009	male	female	Central Serbia, without Belgrade	Belgrade	Vojvodina	urban	rural	Without educational attainment	low	medium	high	15-24	25-34	35-44	45-54	55-64	65 and over
Total	517369	266427	250942	282317	89749	145303	312185	205185	563	109679	355200	51927	107885	142208	112538	107987	46372	380
Seeking job for the first time	192482	93440	99041	106127	32211	54143	105925	86557	279	45139	119831	27233	82465	71577	28961	8562	537	380
Were employed	324887	172987	151900	176190	57538	91159	206259	118628	284	64540	235370	24694	25420	70631	83577	99425	45835	-
Reason for unemployment:																		
Dismissed, winding up of a firm	202665	111364	91301	112002	36320	54343	128576	74089	284	39414	150927	12040	10892	32328	52375	72024	35047	-
Temporary or seasonal job	38730	22931	15799	21148	3984	13598	26473	12257	-	9569	25044	4117	6563	12691	10381	5271	3824	-
Looking after children or disabled adults	7345	465	6879	1544	2269	3532	4791	2553	-	1736	5284	324	455	2541	2354	1995	-	-
Personal or family reasons	26559	9944	16615	15579	5323	5656	13545	13014	-	5986	16310	4263	878	8204	7822	8429	1225	-
Own illness or disability	4182	2531	1651	1783	844	1555	1499	2683	-	1090	3092	-	195	929	541	1895	623	-
Education or training	3351	900	2451	258	426	2667	3351	-	-	-	3059	292	426	2667	-	258	-	-
Early retirement	853	853	-	338	515	-	853	-	-	-	515	338	-	-	-	853	-	-
Regular retirement	2278	2047	231	1532	515	231	1861	417	-	-	2278	-	-	-	417	-	1861	-
Compulsory military service	3922	3922	-	1942	578	1402	1767	2155	-	654	3269	-	2734	1188	-	-	-	-
Other reasons	35002	18030	16973	20064	6764	8175	23543	11460	-	6089	25592	3321	3277	10083	9687	8701	3254	-

19. Structure of inactive persons by educational attainment, sex, region, type of settlement and age, October 2009

%

	Total	Sex		Region			Type of settlement		Age groups					
	October 2009	male	female	Central Serbia, without Belgrade	Belgrade	Vojvodina	urban	rural	15-24	25-34	35-44	45-54	55-64	65 and over
Total							100%							
Without educational attainment	5,6	1,7	8,2	8,1	1,8	4,3	3,0	9,6	0,8	2,0	0,9	2,1	2,0	11,7
Low educational attainment	45,7	40,8	49,0	50,1	31,7	49,3	36,0	60,4	55,9	14,0	32,1	40,3	38,4	52,0
Medium educational attainment	38,8	43,1	35,9	34,7	47,5	38,8	46,8	26,5	42,4	74,2	59,8	49,9	45,9	23,5
High educational attainment	9,9	14,4	6,9	7,1	18,9	7,6	14,1	3,5	1,0	9,8	7,1	7,7	13,7	12,8

**Structure of inactive persons by educational attainment, October 2009
- Republic of Serbia -**



20. Structure of inactive persons by reasons they do not seek job, sex, region, type of settlement, educational attainment and age, October 2009

%

	Total	Sex		Region			Type of settlement		Educational attainment				Age groups						
	October 2009	male	female	Central Serbia, without Belgrade	Belgrade	Vojvodina	urban	rural	Without educational attainment	low	medium	high	15-24	25-34	35-44	45-54	55-64	65 and over	
Total																			100%
Expecting to return to previous job (temporary dismissed)	0,7	1,0	0,4	0,8	0,3	0,7	0,5	0,9	0,3	0,5	0,9	0,4	0,2	1,7	2,5	1,7	0,7	0,0	
Own illness or incapacity	10,8	10,1	11,4	12,1	6,1	12,4	8,3	15,0	39,2	14,2	7,0	4,8	0,7	7,3	17,2	19,3	13,3	13,2	
Looking after children or disabled adults	3,2	0,2	5,2	2,8	2,2	4,6	2,9	3,6	1,5	2,5	4,3	2,1	1,5	18,0	15,8	4,2	1,2	0,4	
Other personal or family reasons	9,2	2,4	13,7	10,3	6,0	9,8	6,5	13,5	16,3	12,1	7,0	3,3	3,2	14,4	24,9	19,1	9,1	6,4	
Education or training	22,5	28,0	18,8	22,0	24,9	21,5	24,4	19,5	3,3	26,7	23,7	3,6	87,2	39,2	0,9	0,0	0,0	0,0	
Retirement	41,2	45,4	38,3	39,5	49,5	37,4	46,5	32,4	30,3	33,7	41,7	76,1	0,0	0,2	3,3	22,1	64,0	76,2	
Discouraged to possibly find job	6,8	6,6	7,0	7,7	3,2	8,2	5,5	9,0	3,8	5,7	8,5	5,2	1,2	10,1	26,0	24,8	6,5	0,7	
Military service	0,5	1,3	0,0	0,5	0,3	0,8	0,5	0,6	0,0	0,1	1,0	0,3	2,0	0,9	0,0	0,0	0,0	0,0	
Other reasons	5,1	5,1	5,1	4,4	7,3	4,6	4,9	5,5	5,3	4,6	5,9	4,2	4,0	8,2	9,5	8,8	5,1	3,1	

Main Definitions

The Labor Force Survey observes population aged 15 and over, relative to the activity status in the respective week and not according to formal status of the persons interviewed.

The term **employed** here anticipates the persons who did a job for at least one hour in the respective week and were duly remunerated (payments in money or in kind), as well as the persons who were employed and were absent from work in the observed week.

Family workers are the persons rendering help, i.e. service to other household members in running family business or agricultural holding and were not remunerated for their work.

The term **unemployed** refers to the persons who, in the respective week did not perform any work for remuneration and who did not have a job they were absent from and which they could carry on after the absence, in case they met the conditions as follows:

- In the last four weeks these persons undertook active steps to find job and if a job was offered, they would be able to start working within two weeks time;
- In the last four weeks these persons undertook no active steps to find job, since they had already found a job and were about to start working after the respective week, latest within the following three – month period.

Active population (labor force) includes all employed and unemployed persons aged 15 and over.

Inactive population consists of the population aged 15 and over who were not categorized as active population.

Activity rate presents the percentage share of active population in total population aged 15 and over.

Employment rate presents the percentage share of employed population in total population aged 15 and over.

Unemployment rate presents the percentage share of unemployed population in total number of active population.

Inactivity rate presents the percentage share of inactive population in total population aged 15 and over.

Published and printed by: Statistical Office of the Republic of Serbia, 5, Milana Rakica St, Belgrade
Phone: +381-11- 2412-922 • Fax: +381-11- 2411- 260 • www.stat.gov.rs
Responsible – Dragan Vukmirović, PhD, Director
Circulation: 20 • Issued semi-annually