

# COMMUNICATION

Number 155 • Year LIX, 08.06.2009

Labor Force Survey

# RS10

SERB 155 RS10 080609

## Labor Force Survey

April 2009

- Preliminary results -

### Introductory notes

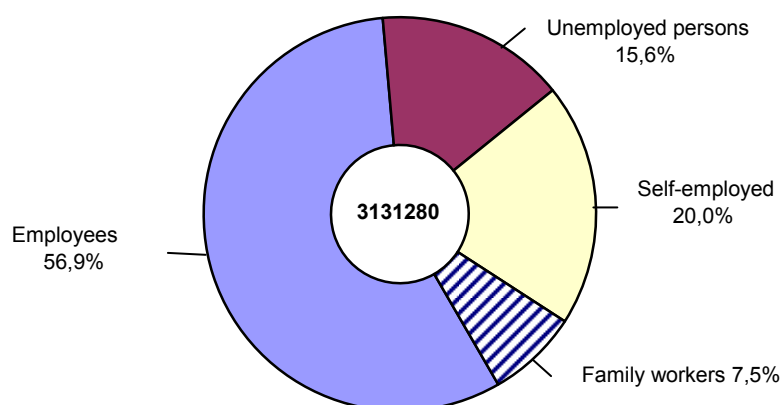
Labor Force Survey represents a study survey that most completely considers the labor force status and fluctuations in the labor market.

While conducting this survey, the methodological solutions, harmonized with the recommendations and definitions of the International Labor Organization – ILO and EUROSTAT requirements (European Statistical Office) were applied and thereby, the most important source was obtained for the international comparison of data of the Republic of Serbia and other countries, regarding the field of labor statistics. The frame for the sample selection is based on the 2002 Census of population, households and dwellings.

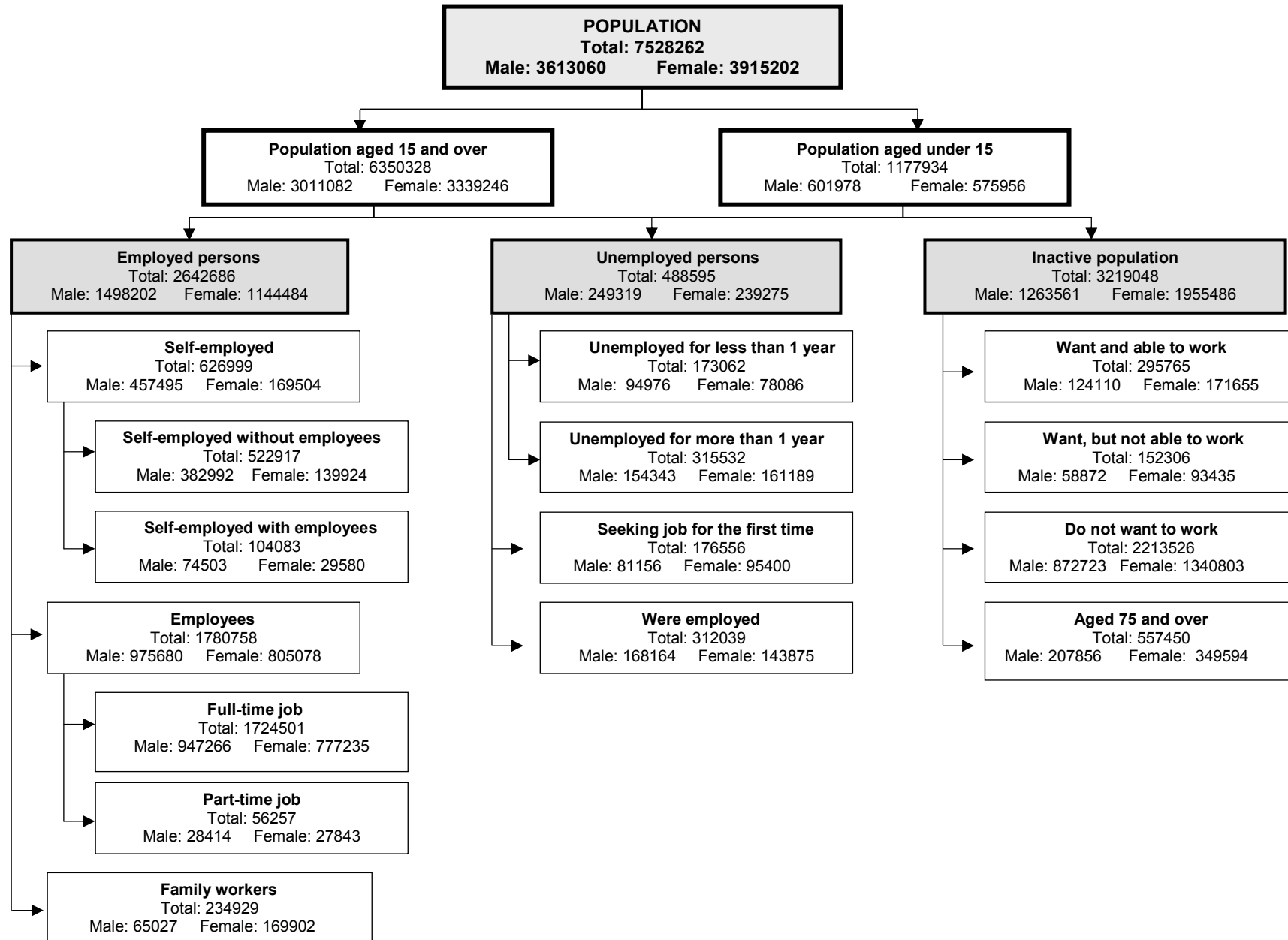
The survey covered about 7000 households of Central Serbia and Vojvodina. The data were collected relative to the demographic features of the whole population. For the population aged 15 and over, the data on their working activity were also collected. The total of 19642 persons were interviewed and for 17035 persons the data regarding their working activity were obtained, which equals 0.3% of the total number of persons aged 15 and over.

Labor Force Survey was carried out in April 2009 and the observation period was 6-12 April 2009.

**Structure of active population aged 15 and over, April 2009**  
- Republic of Serbia -



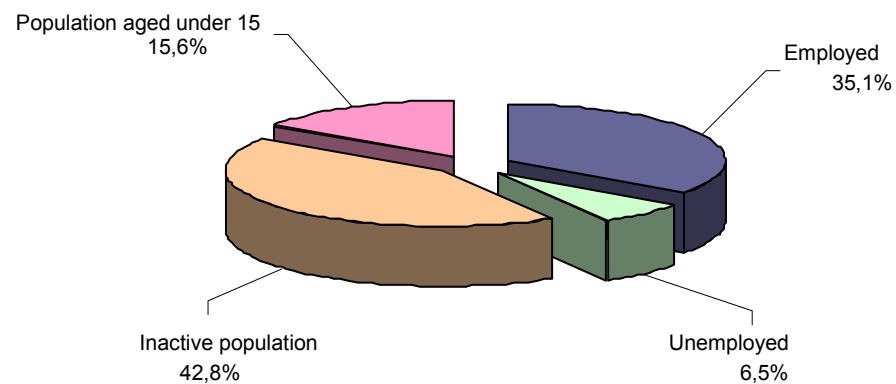
## Review of basic population groups of the Republic of Serbia, April 2009



### 1. Population by activity, sex, region, type of settlement, educational attainment and age, April 2009

	Total	Sex		Region			Type of settlement		Educational attainment				Age groups					
	April 2009	male	female	Central Serbia, without Belgrade	Belgrade	Vojvodina	urban	rural	Without educational attainment	low	middle	high	15-24	25-34	35-44	45-54	55-64	65 and over
<b>Total</b>	<b>7528262</b>	<b>3613060</b>	<b>3915202</b>	<b>3872299</b>	<b>1648382</b>	<b>2007581</b>	<b>4345216</b>	<b>3183046</b>	<b>219012</b>	<b>2211021</b>	<b>3087866</b>	<b>832429</b>	<b>848861</b>	<b>898455</b>	<b>862052</b>	<b>1150165</b>	<b>1134045</b>	<b>1456749</b>
Population aged 15 and over	6350328	3011082	3339246	3247787	1408129	1694412	3663399	2686929	219012	2211021	3087866	832429	848861	898455	862052	1150165	1134045	1456749
Active population	3131280	1747521	1383759	1658481	674896	797903	1744149	1387131	27272	726450	1822872	554687	240441	707731	736613	836992	451815	157688
Employed	2642686	1498202	1144484	1384666	584030	673989	1422276	1220410	25158	631668	1487978	497881	142684	563558	640326	732893	407273	155952
Unemployed	488595	249319	239275	273815	90866	123914	321873	166721	2114	94781	334894	56806	97757	144173	96287	104099	44542	1736
Inactive population	3219048	1263561	1955486	1589306	733233	896509	1919249	1299798	191740	1484571	1264994	277742	608420	190724	125439	313173	682230	1299061
Population aged under 15	1177934	601978	575956	624512	240253	313169	681817	496117	-	-	-	-	-	-	-	-	-	-
Working age population (15 - 64)	4893579	2395396	2498183	2482908	1086207	1324464	2905667	1987912	47920	1408487	2748791	688380	848861	898455	862052	1150165	1134045	-

**Total population structure, April 2009**  
- Republic of Serbia -



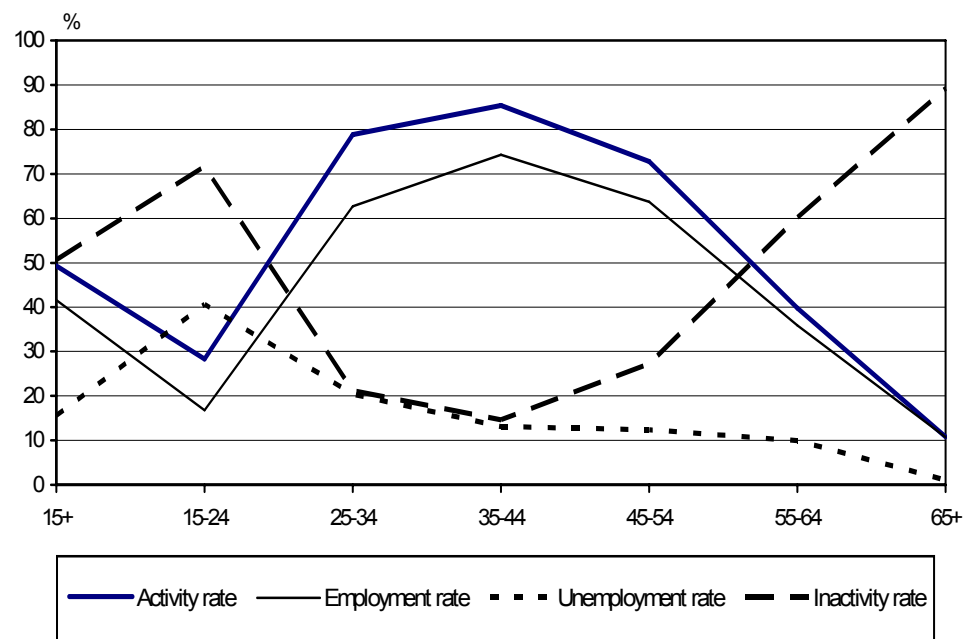
## 2. Structure of population aged 15 and over by activity, sex, region, type of settlement, educational attainment and age, April 2009

	Total	Sex		Region			Type of settlement		Educational attainment				Age groups					
	April 2009	male	female	Central Serbia, without Belgrade	Belgrade	Vojvodina	urban	rural	Without educational attainment	low	middle	high	15-24	25-34	35-44	45-54	55-64	65 and over
<b>Total</b>	<b>6350328</b>	<b>3011082</b>	<b>3339246</b>	<b>3247787</b>	<b>1408129</b>	<b>1694412</b>	<b>3663399</b>	<b>2686929</b>	<b>219012</b>	<b>2211021</b>	<b>3087866</b>	<b>832429</b>	<b>848861</b>	<b>898455</b>	<b>862052</b>	<b>1150165</b>	<b>1134045</b>	<b>1456749</b>
<b>Active population</b>	<b>3131280</b>	<b>1747521</b>	<b>1383759</b>	<b>1658481</b>	<b>674896</b>	<b>797903</b>	<b>1744149</b>	<b>1387131</b>	<b>27272</b>	<b>726450</b>	<b>1822872</b>	<b>554687</b>	<b>240441</b>	<b>707731</b>	<b>736613</b>	<b>836992</b>	<b>451815</b>	<b>157688</b>
Employed	2642686	1498202	1144484	1384666	584030	673989	1422276	1220410	25158	631668	1487978	497881	142684	563558	640326	732893	407273	155952
Of which: agricultural producers and family workers in agriculture	580066	319608	260458	459214	13952	106900	43802	536264	20821	372607	177497	9141	22612	63813	80318	119961	151253	142109
Unemployed	488595	249319	239275	273815	90866	123914	321873	166721	2114	94781	334894	56806	97757	144173	96287	104099	44542	1736
<b>Inactive population</b>	<b>3219048</b>	<b>1263561</b>	<b>1955486</b>	<b>1589306</b>	<b>733233</b>	<b>896509</b>	<b>1919249</b>	<b>1299798</b>	<b>191740</b>	<b>1484571</b>	<b>1264994</b>	<b>277742</b>	<b>608420</b>	<b>190724</b>	<b>125439</b>	<b>313173</b>	<b>682230</b>	<b>1299061</b>
Inactive, want and able to work	295765	124110	171655	151134	57743	86888	176563	119202	2131	79796	182599	31239	49347	50223	52825	83060	51695	8615
<b>Inactive, want, but not able to work, because:</b>	<b>152306</b>	<b>58872</b>	<b>93435</b>	<b>82644</b>	<b>27124</b>	<b>42539</b>	<b>78391</b>	<b>73915</b>	<b>2188</b>	<b>51347</b>	<b>85900</b>	<b>12872</b>	<b>53867</b>	<b>36265</b>	<b>17175</b>	<b>18734</b>	<b>21008</b>	<b>5259</b>
Education or training	32521	13017	19504	19163	5561	7798	21480	11041	-	11752	19618	1152	27168	5071	282	-	-	-
Compulsory military service	8906	8906	-	5712	981	2214	5525	3381	-	270	8012	624	6757	2148	-	-	-	-
Cannot leave the current job in 2 weeks time	1310	169	1142	592	361	358	530	780	-	-	1310	-	-	-	1310	-	-	-
Personal and family reasons	50479	4800	45679	27463	6739	16276	26086	24392	274	16497	29649	4059	11504	22344	7980	5213	2023	1415
Own illness or disability	36771	19841	16929	18826	7632	10312	15705	21065	1268	15946	14662	4894	1092	2669	4660	9540	15709	3101
Other reasons	22320	12139	10180	10888	5850	5582	9065	13254	647	6882	12648	2143	7346	4032	2943	3981	3275	743
<b>Inactive and do not want to work</b>	<b>2213526</b>	<b>872723</b>	<b>1340803</b>	<b>1062564</b>	<b>516610</b>	<b>634352</b>	<b>1373116</b>	<b>840410</b>	<b>78945</b>	<b>1042597</b>	<b>909842</b>	<b>182143</b>	<b>505206</b>	<b>104237</b>	<b>55439</b>	<b>211379</b>	<b>609527</b>	<b>727737</b>
75 and over	557450	207856	349594	292964	131757	132729	291179	266271	108476	310832	86654	51488	-	-	-	-	-	557450

**3. Activity, employment, unemployment and inactivity rates by sex, region, type of settlement, educational attainment and age,  
April 2009**

	Total		Sex		Region			Type of settlement		Educational attainment				Age groups						
	October 2008	April 2009	male	female	Central Serbia, without Belgrade	Belgrade	Vojvodina	urban	rural	Without educational attainment	low	middle	high	15-24	25-34	35-44	45-54	55-64	65 and over	Working age population (15 - 64)
Activity rate	51,4	49,3	58,0	41,4	51,1	47,9	47,1	47,6	51,6	12,5	32,9	59,0	66,6	28,3	78,8	85,4	72,8	39,8	10,8	60,8
Employment rate	44,2	41,6	49,8	34,3	42,6	41,5	39,8	38,8	45,4	11,5	28,6	48,2	59,8	16,8	62,7	74,3	63,7	35,9	10,7	50,8
Unemployment rate	14,0	15,6	14,3	17,3	16,5	13,5	15,5	18,5	12,0	7,8	13,0	18,4	10,2	40,7	20,4	13,1	12,4	9,9	1,1	16,4
Inactivity rate	48,6	50,7	42,0	58,6	48,9	52,1	52,9	52,4	48,4	87,5	67,1	41,0	33,4	71,7	21,2	14,6	27,2	60,2	89,2	39,2

**Activity, employment, unemployment and inactivity rates of population aged 15 and over, April 2009  
- Republic of Serbia -**



#### 4. Structure of population aged 15 and over by age, sex, region, type of settlement, activity and educational attainment, April 2009

%

	Total	Sex		Region			Type of settlement		Activity				Educational attainment			
	April 2009	male	female	Central Serbia, without Belgrade	Belgrade	Vojvodina	urban	rural	active	employed	unemployed	inactive	Without educational attainment	low	middle	high
<b>Total</b>	<b>100%</b>															
15-19 years	6,2	6,7	5,9	6,4	5,4	6,5	6,1	6,4	1,2	0,7	3,5	11,2	3,1	14,6	2,2	-
20-24	7,1	7,7	6,6	7,2	6,7	7,4	7,6	6,6	6,5	4,7	16,5	7,7	1,0	2,2	12,3	2,6
25-29	7,2	7,7	6,7	6,8	7,6	7,5	8,0	6,1	10,6	9,5	16,6	3,8	1,8	2,5	10,4	9,2
30-34	7,0	7,1	6,8	6,4	7,8	7,3	7,5	6,2	12,0	11,8	12,9	2,1	1,0	3,3	9,2	10,0
35-39	6,7	7,2	6,4	7,0	6,9	6,2	7,0	6,4	12,0	12,1	11,5	1,6	1,3	3,6	8,9	8,7
40-44	6,8	7,1	6,6	7,0	6,4	6,9	6,8	6,9	11,5	12,1	8,2	2,3	1,6	4,0	8,6	9,0
45-49	8,3	8,1	8,5	8,4	7,8	8,6	8,4	8,1	13,2	13,6	11,2	3,5	1,5	5,1	10,1	12,0
50-54	9,8	10,2	9,4	9,7	10,5	9,4	9,8	9,8	13,5	14,1	10,1	6,2	2,2	8,5	10,8	11,3
55-59	10,1	10,6	9,8	10,0	10,8	9,9	10,4	9,8	10,4	10,9	7,8	9,9	3,5	10,6	10,1	11,0
60-64	7,7	7,3	8,1	7,5	7,2	8,5	7,6	7,8	4,0	4,5	1,3	11,3	4,8	9,3	6,5	8,8
65-69	6,7	6,2	7,0	6,7	6,5	6,8	6,3	7,1	2,0	2,3	0,3	11,2	7,4	10,4	4,1	6,0
70-74	6,8	6,4	7,2	6,7	6,8	7,0	6,3	7,5	1,6	1,9	0,1	11,9	17,5	10,3	4,0	4,9
75 and over	9,5	7,8	11,0	10,2	9,6	8,1	8,0	11,5	1,4	1,7		17,3	53,2	15,6	2,9	6,4

#### 5. Structure of population aged 15 and over by age groups, sex, region, type of settlement, activity and educational attainment, April 2009

%

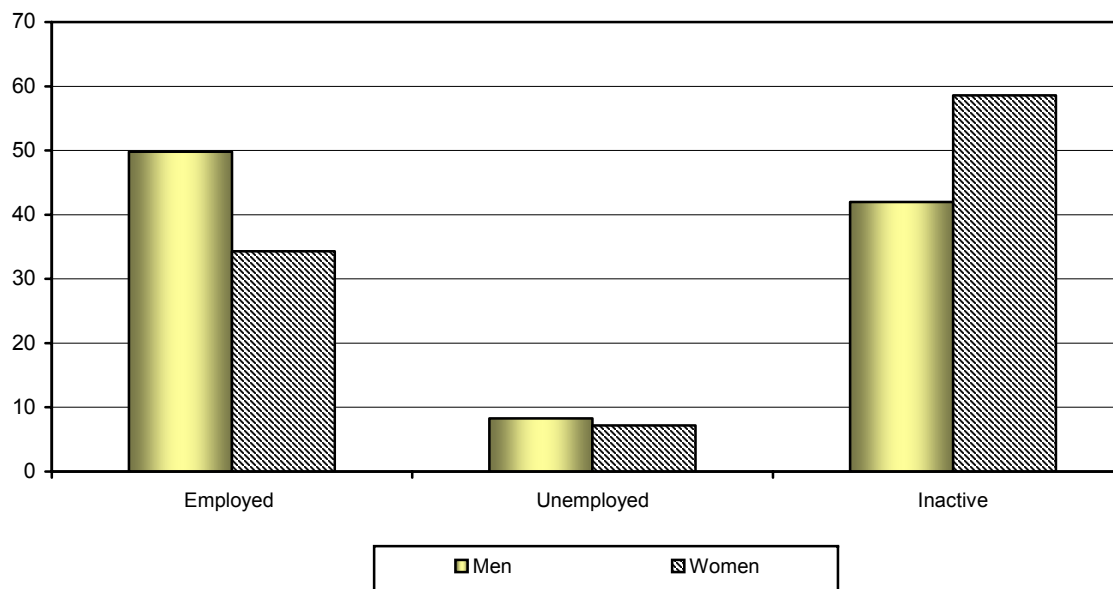
	Total	Sex		Region			Type of settlement		Activity			Educational attainment				
	April 2009	male	female	Central Serbia, without Belgrade	Belgrade	Vojvodina	urban	rural	employed	unemployed	inactive	Without educational attainment	low	middle	high	
<b>Total</b>	<b>100%</b>															
15-24 years	13,4	14,4	12,5	13,6	12,2	13,9	13,6	13,0	5,4	20,0	18,9	4,1	16,8	14,4	2,6	
25-34	14,1	14,8	13,6	13,2	15,4	14,8	15,5	12,3	21,3	29,5	5,9	2,8	5,8	19,6	19,2	
34-44	13,6	14,3	13,0	14,0	13,3	13,1	13,8	13,2	24,2	19,7	3,9	2,9	7,6	17,5	17,7	
45-54	18,1	18,3	17,9	18,1	18,3	18,0	18,3	17,9	27,7	21,3	9,7	3,7	13,6	21,0	23,3	
55-64	17,9	17,8	17,9	17,5	18,0	18,4	18,0	17,6	15,4	9,1	21,2	8,3	19,9	16,6	19,8	
65 and over	22,9	20,4	25,2	23,6	22,9	21,8	20,7	26,0	5,9	0,4	40,4	78,1	36,3	11,0	17,3	

**6. Structure of population aged 15 and over, by activity, sex, region, type of settlement, educational attainment, age and subjective view of financial situation in the own household, April 2009**

%

	Total	Sex		Region			Type of settlement		Educational attainment			Age groups						Financial situation in the household				
	April 2009	male	female	Central Serbia, without Belgrade	Belgrade	Vojvodina	urban	rural	Without educational attainment	low	middle	high	15-24	25-34	35-44	45-54	55-64	65 and over	Very good	Mainly good	Mainly bad	bad
<b>Total</b>		<b>100%</b>																				
Employed	41,6	49,8	34,3	42,6	41,5	,8	38,8	45,4	11,5	28,6	48,2	59,8	16,8	62,7	74,3	63,7	35,9	10,7	48,7	48,6	42,1	34,6
Unemployed	7,7	8,3	7,2	8,4	6,5	7,3	8,8	6,2	1,0	4,3	10,8	6,8	11,5	16,0	11,2	9,1	3,9	0,1	2,3	3,6	7,5	11,9
Inactive	50,7	42,0	58,6	48,9	52,1	52,9	52,4	48,4	87,5	67,1	41,0	33,4	71,7	21,2	14,6	27,2	60,2	89,2	49,0	47,8	50,4	53,5

**Structure of population aged 15 and over, by activity, sex, April 2009  
- Republic of Serbia -**

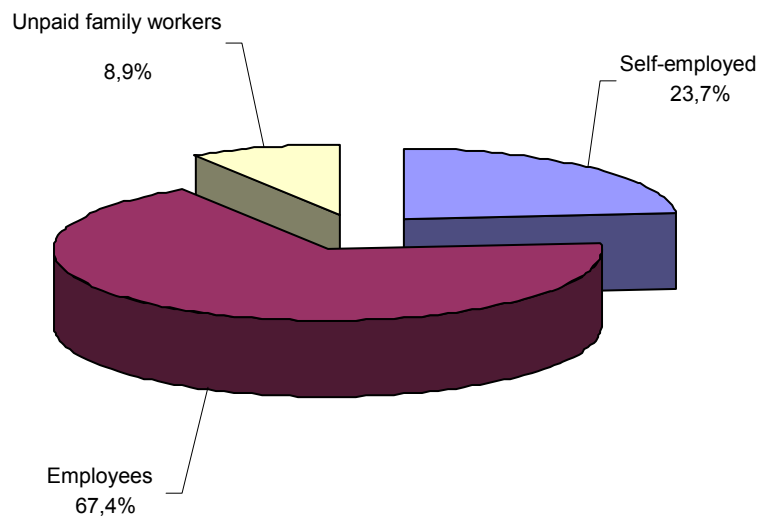


### 7. Structure of employed persons by employment status, sex, region, type of settlement, educational attainment and age, April 2009

%

	Total	Sex		Region			Type of settlement		Educational attainment				Age groups						
	April 2009	male	female	Central Serbia, without Belgrade	Belgrade	Vojvodina	urban	rural	Without educational attainment	low	middle	high	15-24	25-34	35-44	45-54	55-64	65 and over	
<b>Total</b>																			<b>100%</b>
Self-employed	23,7	30,5	14,8	29,9	11,4	21,8	14,5	34,5	46,2	42,7	19,3	11,6	8,9	14,8	19,1	22,5	34,6	66,0	
Employees	67,4	65,1	70,3	56,0	87,5	73,3	84,1	47,9	10,1	33,8	75,7	87,9	78,0	78,7	75,4	71,6	52,3	3,3	
Family workers	8,9	4,3	14,8	14,1	1,1	4,9	1,4	17,6	43,7	23,5	4,9	0,5	13,0	6,5	5,5	5,9	13,1	30,8	

Structure of employed persons by employment status, April 2009.  
- Republic of Serbia -





### 8. Structure of employed persons by sections of activities, sex, region, type of settlement, educational attainment and age, April 2009

%

	Total	Sex		Region			Type of settlement		Educational attainment				Age groups										
	April 2009	male	female	Central Serbia, without Belgrade	Belgrade	Vojvodina	urban	rural	Without educational attainment	low	middle	high	15-24	25-34	35-44	45-54	55-64	65 and over					
<b>Total</b>									<b>100%</b>														
Agriculture, forestry and water works supply	23,7	24,1	23,2	33,6	3,3	21,0	3,7	47,0	91,8	61,9	13,1	3,4	17,3	12,0	14,7	18,0	40,1	92,2					
Fishing	0,1	0,2	-	0,1	0,1	0,1	0,0	0,1	-	0,1	0,1	-	-	0,1	0,1	0,1	-	-					
Mining and quarrying	1,0	1,4	0,4	1,0	1,4	0,5	0,7	1,3	-	0,5	1,3	0,5	0,5	0,4	1,4	1,6	0,7	-					
Manufacturing	17,4	20,6	13,3	18,0	13,4	19,7	19,0	15,7	-	11,5	21,7	13,2	15,8	16,7	19,9	20,9	15,4	1,1					
Electricity, gas and water supply	1,8	2,8	0,5	1,9	2,1	1,4	2,3	1,2	-	0,7	2,2	2,1	1,0	1,4	1,9	2,3	2,5	-					
Construction	5,2	8,3	1,2	4,6	5,3	6,4	5,7	4,7	-	6,4	5,6	2,9	6,8	4,8	5,8	5,4	5,4	1,3					
Wholesale and retail trade, repair	14,5	12,4	17,2	11,9	19,2	15,7	18,4	9,9	4,1	4,1	20,7	9,5	25,3	21,1	16,7	12,3	6,8	1,9					
Hotels and restaurants	2,7	1,9	3,6	2,6	2,5	3,0	3,1	2,1	-	1,8	3,6	1,0	4,8	4,6	2,7	2,0	1,5	-					
Transport, storage and communications	5,5	7,7	2,6	4,0	8,8	5,6	7,3	3,3	-	2,4	7,0	5,0	4,5	6,3	5,8	6,8	3,7	-					
Financial intermediation	2,1	1,5	2,8	1,0	4,9	1,7	3,2	0,7	-	0,4	1,9	4,7	1,0	3,7	1,9	2,0	1,2	-					
Real estate activities, renting	3,6	3,6	3,6	2,5	6,3	3,4	5,6	1,3	1,7	1,2	3,1	8,2	1,9	5,0	3,1	4,1	3,0	0,8					
Public administration and social security	4,9	4,5	5,5	4,6	6,0	4,6	6,7	2,9	-	0,7	4,8	10,8	3,6	5,9	6,6	4,9	3,4	-					
Education	5,9	3,6	8,9	5,1	8,0	5,7	8,1	3,4	-	2,0	2,0	22,6	2,8	4,9	7,1	6,3	7,6	0,9					
Health and social work	6,6	2,2	12,3	5,8	8,9	6,1	8,9	3,9	-	2,0	6,9	11,9	4,5	5,8	8,2	8,1	5,2	1,0					
Other community, social and personal service activities	4,8	5,1	4,4	3,2	9,2	4,3	6,9	2,4	2,4	3,8	5,5	4,1	10,3	6,4	3,9	4,9	3,4	0,9					
Households with employed persons	0,3	0,1	0,6	0,0	0,6	0,6	0,5	0,1	-	0,5	0,3	-	-	0,8	0,2	0,1	0,2	-					
Extra-territorial organizations and bodies	0,0	0,0	0,0	-	0,1	0,1	0,1	-	-	-	-	0,2	-	0,1	0,1	-	-	-					

### 9. Structure of employed persons by occupation, sex, region, type of settlement, educational attainment and age, April 2009

%

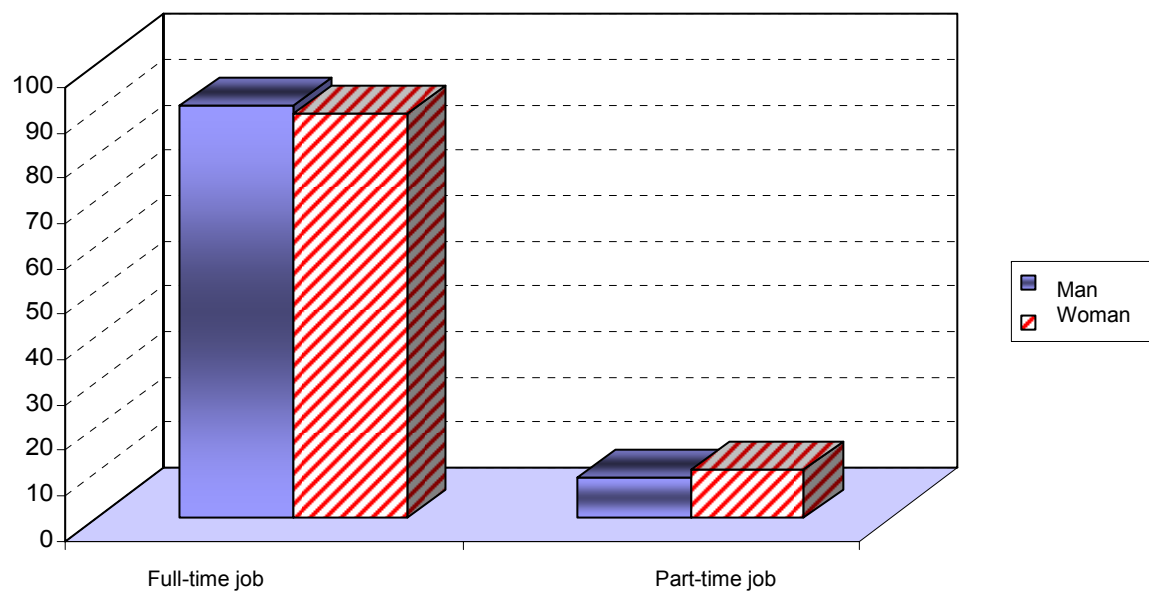
	Total	Sex		Region			Type of settlement		Educational attainment				Age groups									
	April 2009	male	female	Central Serbia, without Belgrade	Belgrade	Vojvodina	urban	rural	Without educational attainment	low	middle	high	15-24	25-34	35-44	45-54	55-64	65 and over				
<b>Total</b>									<b>100%</b>													
Legislators, senior officials and directors - managers	5,3	6,1	4,2	5,4	4,6	5,7	7,2	3,0	-	0,5	4,8	13,0	1,5	4,7	6,5	6,5	5,1	0,5				
Professionals	10,8	8,2	14,2	8,4	20,3	7,7	16,9	3,7	-	0,6	1,7	51,6	2,8	12,4	11,3	12,4	11,1	2,5				
Technicians and associate professionals	13,8	10,5	18,1	10,6	21,0	14,2	20,0	6,6	-	1,2	17,3	20,2	14,0	15,9	14,5	16,2	10,3	0,9				
Clerks	6,0	4,5	8,0	4,1	9,5	6,8	8,2	3,5	-	1,7	8,5	4,4	5,5	6,4	6,8	7,2	4,4	-				
Service and sales workers	13,9	10,1	18,7	11,6	17,7	15,2	17,0	10,2	1,8	5,4	20,7	4,9	28,8	21,6	14,4	10,9	7,4	0,8				
Skilled agricultural and fishery workers	21,6	21,8	21,3	32,2	2,7	16,1	2,8	43,5	78,9	58,7	11,4	1,9	15,1	10,7	12,8	15,9	36,7	90,4				
Craft and related trades workers	13,0	19,8	4,1	13,3	10,4	14,7	13,1	12,9	-	9,8	18,4	1,5	17,3	13,6	15,3	13,5	10,9	1,2				
Plant and machine operators and assemblers	7,3	11,6	1,7	6,6	7,9	8,4	7,7	6,9	-	5,5	10,3	1,3	7,6	7,8	8,6	8,2	5,9	-				
Elementary occupations	8,1	6,9	9,7	7,6	5,7	11,1	6,7	9,7	19,3	16,6	6,6	1,1	7,3	6,7	9,3	9,1	8,3	3,8				
Armed forces	0,2	0,3	-	0,2	0,2	0,0	0,3	0,0	-	-	0,2	0,2	-	0,3	0,4	0,0	-	-				

**10. Structure of employed persons by type of working time, sex, region, type of settlement, employment status, educational attainment and age, April 2009**

%

	Total	Sex		Region			Type of settlement		Employed persons			Educational attainment			Age groups						
	April 2009	male	female	Central Serbia, without Belgrade	Belgrade	Vojvodina	urban	rural	Self-employed	employees	Family workers	Without educational attainment	low	middle	high	15-24	25-34	35-44	45-54	55-64	65 and over
<b>Total</b>		<b>100%</b>																			
Full-time job	90,3	91,1	89,4	89,7	93,9	88,7	94,1	86,0	79,7	96,8	69,4	44,4	80,1	93,7	95,6	86,3	92,7	94,7	94,0	86,5	60,5
Part-time job	9,7	8,9	10,6	10,3	6,1	11,3	5,9	14,0	20,3	3,2	30,6	55,6	19,9	6,3	4,4	13,7	7,3	5,3	6,0	13,5	39,5

**Structure of employed persons by type of working time, sex, April 2009  
- Republic of Serbia -**



**11. Employed persons by number of hours usually worked per a week, sex, region, type of settlement, employment status, educational attainment and age, April 2009**

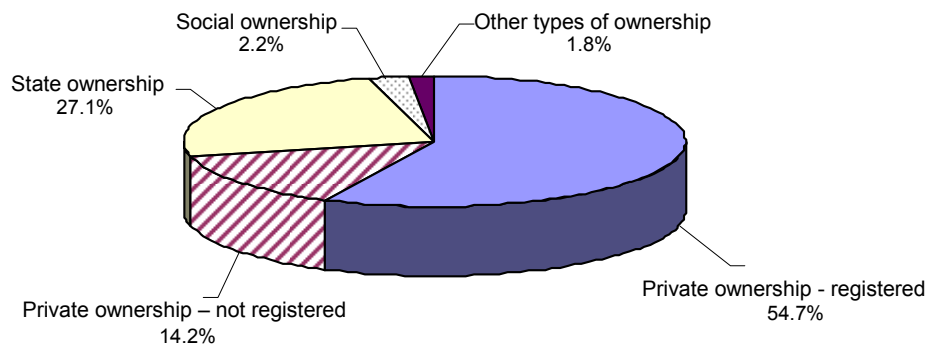
	Total	Sex		Region			Type of settlement		Employed persons			Educational attainment			Age groups						
	April 2009	male	female	Central Serbia, without Belgrade	Belgrade	Vojvodina	urban	rural	Self-employed	employees	Family workers	Without educational attainment	low	middle	high	15-24	25-34	35-44	45-54	55-64	65 and over
<b>Total</b>	<b>2642686</b>	<b>1498202</b>	<b>1144484</b>	<b>1384666</b>	<b>584030</b>	<b>673989</b>	<b>1422276</b>	<b>1220410</b>	<b>626999</b>	<b>1780758</b>	<b>234929</b>	<b>25158</b>	<b>631668</b>	<b>1487978</b>	<b>497881</b>	<b>142684</b>	<b>563558</b>	<b>640326</b>	<b>732893</b>	<b>407273</b>	<b>155952</b>
1 hour	218	-	218	-	-	218	218	-	218	-	-	-	218	-	-	-	-	218	-	-	-
2-4	3617	538	3078	411	298	2907	1918	1698	1881	762	973	-	1244	2372	-	1060	1047	-	1509	-	-
5-9	8292	3139	5153	2663	2846	2784	3998	4294	3824	3325	1143	-	4660	2552	1081	2182	1758	926	2075	260	1092
10-14	31119	14996	16123	12843	5347	12928	12769	18350	18821	3917	8380	1970	14681	12207	2260	1810	5092	3997	2948	8025	9247
15-19	23270	8903	14367	9613	6169	7488	9122	14148	11833	4781	6656	692	11266	8196	3116	1405	6639	2988	3368	3754	5116
20-29	110060	57361	52699	71527	10702	27831	32551	77509	50590	23489	35981	6834	49463	42181	11583	9693	16933	11271	17354	26335	28474
30-39	195966	98496	97470	103799	48030	44136	87902	108064	70748	96686	28532	7653	68995	83933	35385	8551	28210	44052	49467	39127	26558
40-49	1774353	974656	799697	855077	458928	460348	1106697	667656	229160	1477694	67499	3496	277364	1096041	397452	90797	413442	475352	525731	231914	37117
50-59	240975	152160	88815	140903	35387	64685	91641	149334	101875	100892	38208	2824	91226	118523	28402	14403	48454	46525	64421	44852	22320
60 hours and more	254549	187686	66863	187564	16323	50663	75192	179357	138050	68943	47557	1689	112551	121707	18602	12784	41984	54996	65752	53007	26027
Unknown	267	267	-	267	-	-	267	-	-	267	-	-	-	267	-	-	-	-	267	-	-

**12. Structure of employed persons by type of ownership, sex, region, type of settlement, employment status, educational attainment and age, April 2009**

%

	Total	Sex		Region			Type of settlement		Employed persons			Educational attainment				Age groups						
	April 2009	male	female	Central Serbia, without Belgrade	Belgrade	Vojvodina	urban	rural	Self-employed	employees	Family workers	Without educational attainment	low	middle	high	15-24	25-34	35-44	45-54	55-64	65 and over	
<b>Total</b>																						<b>100%</b>
Private – registered ownership	54,7	57,4	51,2	54,1	50,4	59,8	54,2	55,3	59,3	52,5	59,1	34,6	53,0	60,8	39,7	70,4	64,5	53,8	50,2	46,7	51,2	
Private – not registered ownership	14,2	14,6	13,6	18,7	4,4	13,5	4,8	25,1	38,9	2,0	40,9	64,3	34,2	9,0	1,7	12,6	8,9	9,7	11,0	22,1	47,4	
State ownership	27,1	23,3	32,0	24,1	38,3	23,5	36,3	16,3	0,1	40,2	-	1,1	10,2	25,4	55,0	13,3	23,9	32,6	33,6	26,4	0,2	
Social ownership	2,2	2,5	1,8	1,6	3,9	1,9	2,3	2,0	-	3,2	-	-	0,8	2,9	1,9	0,9	1,3	2,0	3,3	3,0	-	
Other types of ownership	1,8	2,2	1,3	1,5	3,0	1,3	2,3	1,2	1,7	2,1	-	-	1,9	1,9	1,7	2,7	1,3	1,9	2,0	1,9	1,2	

**Structure of employed persons by type of ownership, April 2009  
- Republic of Serbia -**



**13. Structure of employed persons by specific types of working time, sex, region, type of settlement, employment status, educational attainment and age, April 2009**

%

	Total	Sex		Region			Type of settlement		Employed persons			Educational attainment				Age groups						
	April 2009	male	female	Central Serbia, without Belgrade	Belgrade	Vojvodina	urban	rural	Self-employed	employees	Family workers	Without educational attainment	low	middle	high	15-24	25-34	35-44	45-54	55-64	65 and over	
Evening work – all																						100%
Often	20,1	21,3	18,6	22,2	16,2	19,2	18,6	21,8	24,3	18,5	21,1	14,3	22,3	22,7	9,8	27,0	23,2	20,4	17,9	17,5	18,6	
Sometimes	24,3	26,6	21,3	25,7	23,5	22,1	21,5	27,5	32,0	20,3	33,8	25,6	29,1	24,1	18,6	21,7	24,2	24,5	22,9	25,8	28,4	
Never	55,6	52,2	60,2	52,2	60,3	58,7	59,8	50,7	43,7	61,2	45,1	60,1	48,6	53,1	71,7	51,3	52,6	55,1	59,2	56,7	53,1	
Night work - all																						100%
Often	7,3	9,7	4,1	6,4	6,9	9,3	8,1	6,3	4,3	9,1	1,1	-	5,3	9,4	3,6	12,1	10,3	8,4	5,8	4,7	0,7	
Sometimes	9,2	11,6	6,2	8,9	10,6	8,7	10,2	8,1	9,2	9,7	5,8	0,8	7,5	10,9	7,0	8,1	10,7	9,6	9,7	7,9	4,5	
Never	83,5	78,8	89,7	84,7	82,5	82,0	81,8	85,6	86,5	81,2	93,1	99,2	87,2	79,7	89,5	79,8	79,0	82,0	84,4	87,5	94,8	
Saturday work – all																						100%
Often	44,0	46,4	40,8	52,8	23,7	43,3	32,3	57,5	68,5	30,9	77,2	69,1	64,5	44,0	16,4	50,5	41,9	40,9	38,9	47,5	72,4	
Sometimes	29,2	31,6	26,2	26,6	32,8	31,6	30,9	27,3	24,4	32,4	18,4	23,7	25,2	31,6	27,6	36,4	32,0	30,2	28,7	24,7	23,1	
Never	26,8	22,1	33,0	20,6	43,5	25,1	36,8	15,2	7,1	36,7	4,4	7,2	10,3	24,4	56,0	13,1	26,1	28,9	32,4	27,8	4,5	
Sunday work – all																						100%
Often	23,2	24,6	21,2	29,5	11,1	20,6	13,7	34,2	42,9	12,5	51,6	50,5	39,4	21,5	6,1	21,3	20,8	19,6	20,4	28,6	46,7	
Sometimes	22,0	24,7	18,6	22,6	21,9	21,0	20,0	24,4	27,1	19,5	28,2	27,9	28,5	22,1	13,4	26,2	22,6	21,8	19,8	21,6	29,1	
Never	54,8	50,7	60,2	47,9	67,0	58,4	66,3	41,4	30,0	68,1	20,2	21,6	32,0	56,4	80,4	52,4	56,7	58,6	59,8	49,8	24,1	
Working at home - all																						100%
Often	5,3	4,9	5,8	4,9	5,1	6,3	3,2	7,8	12,0	2,0	12,9	5,1	10,5	3,3	4,7	2,6	2,5	4,1	4,7	9,2	15,4	
Sometimes	3,1	3,0	3,1	2,2	5,1	3,1	3,7	2,3	4,7	2,6	2,3	4,4	2,3	2,6	5,4	4,0	3,8	2,8	2,8	2,6	2,5	
Never	91,6	92,1	91,0	92,9	89,8	90,6	93,1	90,0	83,4	95,5	84,8	90,6	87,2	94,1	89,9	93,3	93,7	93,1	92,4	88,2	82,0	

**14. Structure of employed persons by type of job, sex, region, type of settlement, educational attainment and age, April 2009**

%

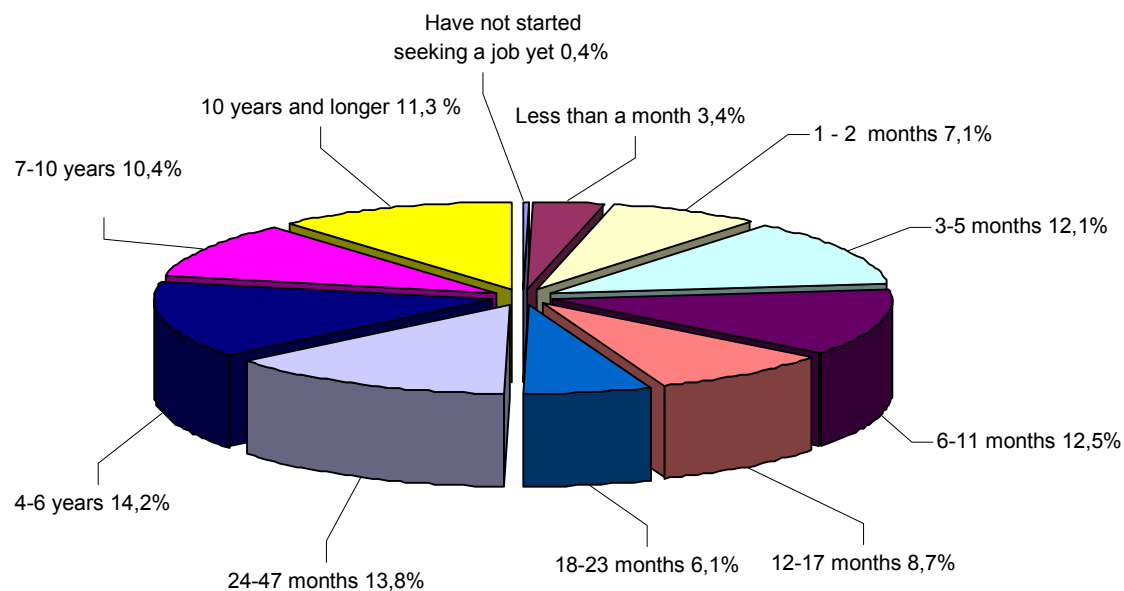
	Total	Sex		Region			Type of settlement		Educational attainment				Age groups									
	April 2009	male	female	Central Serbia, without Belgrade	Belgrade	Vojvodina	urban	rural	Without educational attainment	low	middle	high	15-24	25-34	35-44	45-54	55-64	65 and over				
<b>Total</b>																						100%
Permanent job	88,1	86,4	90,2	90,1	91,1	81,9	89,5	85,2	-	76,6	88,8	92,4	62,7	84,0	90,1	93,4	93,4	42,6				
Temporary job	8,0	8,1	7,9	7,2	7,0	10,1	7,9	8,1	10,8	8,0	8,4	6,8	25,3	12,9	6,2	3,8	3,3	-				
Seasonal job	1,9	2,8	0,8	1,3	0,9	3,9	0,8	4,2	48,0	8,6	1,1	0,3	5,8	1,2	2,0	1,5	2,0	15,7				
Casual job	2,0	2,7	1,1	1,3	1,0	4,1	1,7	2,6	41,2	6,8	1,6	0,5	6,2	1,9	1,8	1,3	1,3	41,7				

15. Structure of unemployed persons by length of job seeking, sex, region, type of settlement, educational attainment and age, April 2009

%

	Total	Sex		Region			Type of settlement		Educational attainment				Age groups					
	April 2009	male	female	Central Serbia, without Belgrade	Belgrade	Vojvodina	urban	rural	Without educational attainment	low	middle	high	15-24	25-34	35-44	45-54	55-64	65 and over
<b>Total</b>	<b>100%</b>																	
Have not started seeking a job yet	0,4	0,7	-	0,5	0,6	-	0,4	0,4	-	0,7	0,3	-	1,3	0,3	-	-	-	-
Less than a month	3,4	4,0	2,7	2,7	2,5	5,5	3,5	3,2	-	1,3	3,3	7,5	4,0	3,7	0,9	3,5	5,9	-
1 - 2 months	7,1	7,8	6,5	6,6	7,1	8,3	6,1	9,1	12,2	3,5	8,1	7,2	12,2	6,1	6,4	6,9	1,8	-
3-5	12,1	13,3	10,9	9,3	14,9	16,3	12,7	10,9	10,7	8,0	13,1	13,2	16,1	13,6	7,5	9,5	14,9	-
6-11	12,5	12,3	12,6	12,5	15,0	10,5	12,7	11,9	12,2	11,3	11,2	22,0	17,0	13,4	9,4	9,5	10,7	73,8
12-17	8,7	8,6	8,9	7,1	12,2	9,6	10,1	6,1	-	7,8	8,3	13,1	12,1	7,6	9,2	7,2	7,7	-
18-23	6,1	7,2	4,9	5,5	6,8	6,8	6,2	5,9	-	5,9	6,4	4,6	8,3	6,7	3,4	6,0	5,9	-
24-47 months	13,8	12,8	14,9	15,2	11,7	12,4	12,2	16,9	-	13,4	14,1	13,2	16,0	13,2	10,1	17,0	12,3	-
4-6 years	14,2	13,9	14,5	14,4	13,2	14,5	14,3	14,0	-	14,9	14,7	10,9	10,3	15,8	14,6	14,2	17,5	-
7-10 years	10,4	10,8	10,0	12,8	10,5	5,1	10,2	10,9	49,3	13,5	10,2	5,3	2,8	11,5	13,6	12,4	12,9	-
10 years and longer	11,3	8,5	14,2	13,4	5,5	11,1	11,6	10,7	15,5	19,8	10,3	2,8	-	8,0	24,9	14,0	10,4	26,2

Structure of unemployed persons by length of job seeking, April 2009  
- Republic of Serbia -



**16. Unemployed persons by previous employment status, sex, region, type of settlement, educational attainment and age, April 2009**

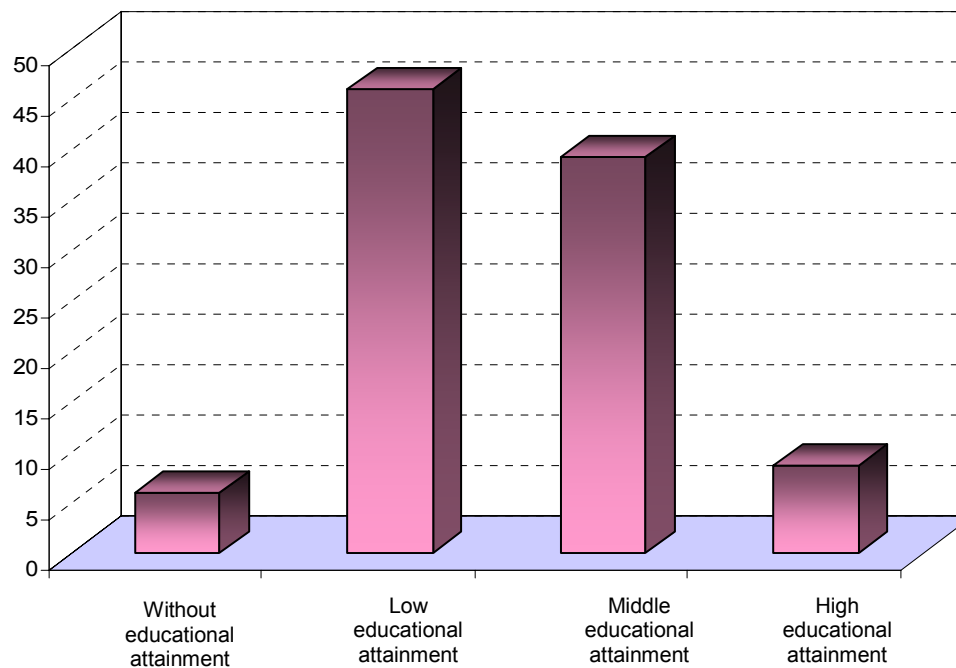
	Total	Sex		Region			Type of settlement		Educational attainment				Age groups					
	April 2009	male	female	Central Serbia, without Belgrade	Belgrade	Vojvodina	urban	rural	Without educational attainment	low	middle	high	15-24	25-34	35-44	45-54	55-64	65 and over
<b>Total</b>	<b>488595</b>	<b>249319</b>	<b>239275</b>	<b>273815</b>	<b>90866</b>	<b>123914</b>	<b>321873</b>	<b>166721</b>	<b>2114</b>	<b>94781</b>	<b>334894</b>	<b>56806</b>	<b>97757</b>	<b>144173</b>	<b>96287</b>	<b>104099</b>	<b>44542</b>	<b>1736</b>
Seeking job for the first time	176556	81156	95400	105465	30632	40459	111468	65088	1887	36594	112770	25305	73887	70148	24704	7200	162	455
Were employed	312039	168164	143875	168350	60234	83455	210405	101633	227	58187	222123	31501	23869	74025	71584	96899	44380	1281
Reason for unemployment:																		
Dismissed, winding up of a firm	194498	106584	87914	100423	43000	51074	132650	61848	-	33804	142398	18296	10051	41722	42602	67472	31370	1281
Temporary or seasonal job	42585	23640	18945	22738	5174	14673	28630	13954	-	9829	27385	5371	6225	14141	11629	7884	2706	-
Looking after children or disabled adults	7128	260	6868	1895	2882	2351	5058	2070	-	2093	5035	-	413	1223	3455	1463	575	-
Personal or family reasons	16888	6940	9948	12087	463	4338	11663	5225	-	2835	12906	1147	304	6496	6097	3184	808	-
Own illness or disability	5540	2662	2878	1949	767	2824	2617	2923	227	2184	2325	805	334	768	353	2495	1590	-
Education or training	1565	673	893	354	-	1212	1565	-	-	-	1565	-	-	1212	-	354	-	-
Early retirement	334	334	-	334	-	-	334	-	-	-	-	334	-	-	-	334	-	-
Regular retirement	988	521	467	988	-	-	988	-	-	-	988	-	-	-	-	-	988	-
Compulsory military service	3169	3169	-	2309	-	861	877	2292	-	302	2868	-	2854	316	-	-	-	-
Other reasons	39342	23380	15962	25273	7947	6123	26022	13321	-	7141	26653	5548	3689	8149	7447	13713	6344	-

### 17. Structure of inactive persons by educational attainment, sex, region, type of settlement and age, April 2009

%

	Total	Sex		Region			Type of settlement		Age groups					
	April 2009	male	female	Central Serbia, without Belgrade	Belgrade	Vojvodina	urban	rural	15-24	25-34	35-44	45-54	55-64	65 and over
<b>Total</b>									<b>100%</b>					
Without educational attainment	6,0	2,3	8,3	8,3	1,5	5,3	3,4	9,8	1,3	2,8	3,2	2,0	2,0	11,9
Low educational attainment	46,1	39,8	50,2	49,3	34,2	50,2	37,2	59,2	54,9	19,8	35,4	38,7	38,7	52,6
Middle educational attainment	39,3	45,6	35,2	36,3	47,8	37,7	47,1	27,8	42,4	68,4	54,5	51,8	47,2	24,9
High educational attainment	8,6	12,3	6,2	6,0	16,5	6,8	12,3	3,2	1,4	9,1	6,8	7,5	12,1	10,6

Structure of inactive persons by educational attainment, April 2009





## Main Definitions

The Labor Force Survey observes population aged 15 and over, relative to the activity status in the respective week and not according to formal status of the persons interviewed.

The term **employed** here anticipates the persons who did a job for at least one hour in the respective week and were duly remunerated (payments in money or in kind), as well as the persons who were employed and were absent from work in the observed week.

**Family workers** are the persons rendering help, i.e. service to other household members in running family business or agricultural holding and were not remunerated for their work.

The term **unemployed** refers to the persons who, in the respective week did not perform any work for remuneration and who did not have a job they were absent from and which they could carry on after the absence, in case they met the conditions as follows:

- In the last four weeks these persons undertook active steps to find job and if a job was offered, they would be able to start working within two weeks time;
- In the last four weeks these persons undertook no active steps to find job, since they had already found a job and were about to start working after the respective week, latest within the following three – month period.

**Active population (labor force)** includes all employed and unemployed persons aged 15 and over.

**Inactive population** consists of the population aged 15 and over who were not categorized as active population.

**Activity rate** presents the percentage share of active population in total population aged 15 and over.

**Employment rate** presents the percentage share of employed population in total population aged 15 and over.

**Unemployment rate** presents the percentage share of unemployed population in total number of active population.

**Inactivity rate** presents the percentage share of inactive population in total population aged 15 and over.

Published and printed by: Statistical Office of the Republic of Serbia, Milana Rakica 5, Belgrade  
Phone: +381-11- 2412-922 • Fax: +381-11- 2411- 260 • [www.stat.gov.rs](http://www.stat.gov.rs)  
Responsible – Dragan Vukmirovic, PhD, Director  
Circulation: 20 • Issued semi-annually