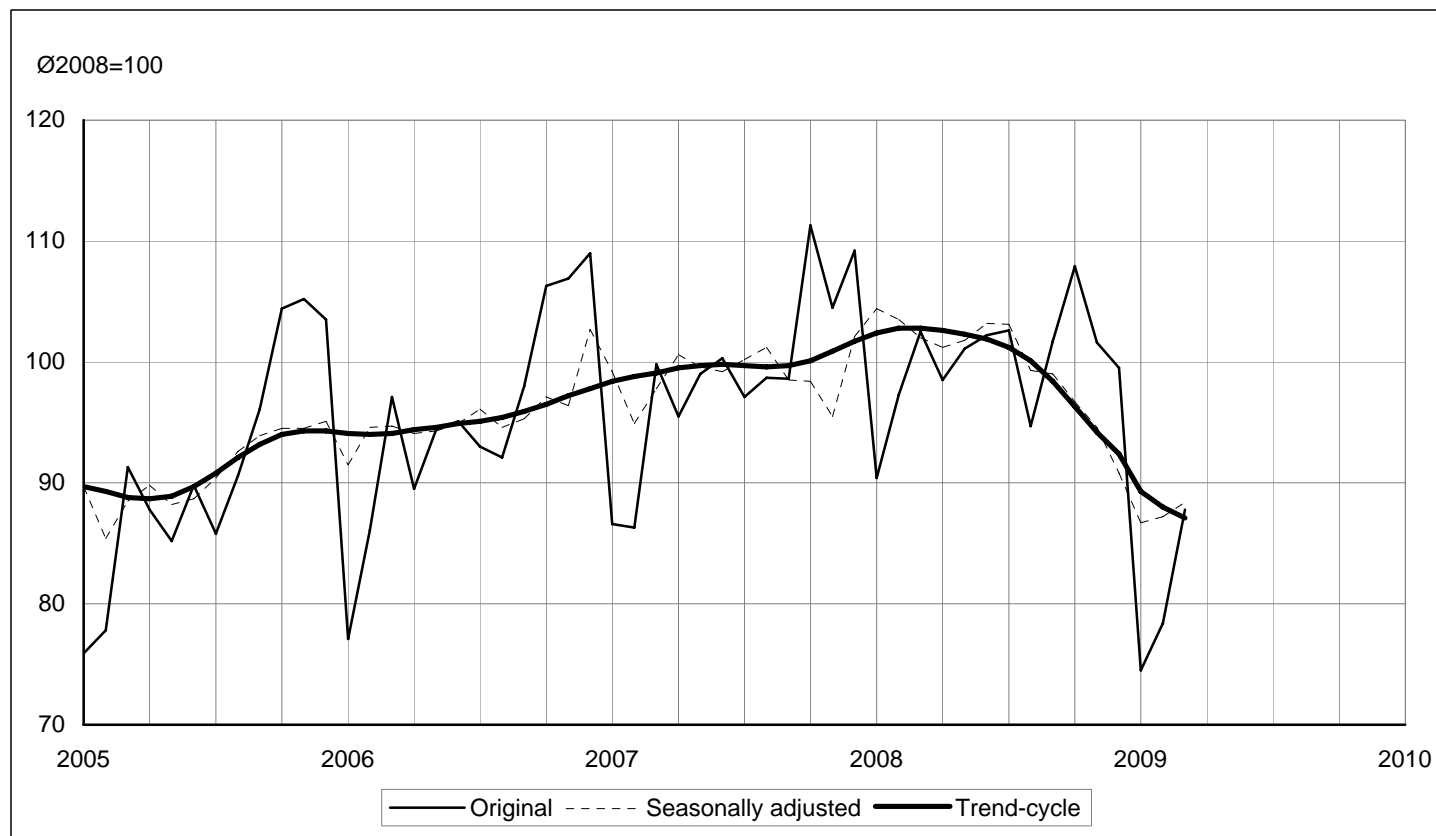


## Industrial production indices, March 2009 - Previous results -

### Industrial production, 2005 - 2009



Data in this Communication represent previous results and may undergo certain modifications.

## 1. Industrial production indices, by area, 2009

|                                     | Share in production, 2008 | Ø2008=100 |       |       | III 2009<br>III 2008 | I-III 2009<br>I-III 2008 |
|-------------------------------------|---------------------------|-----------|-------|-------|----------------------|--------------------------|
|                                     |                           | II        | III   | I-III |                      |                          |
| <b>REPUBLIC OF SERBIA</b>           |                           |           |       |       |                      |                          |
| <i>Industry total</i> <sup>1)</sup> | 100,0                     | 78,4      | 87,8  | 80,4  | 85,8                 | 83,1                     |
| Mining and quarrying                | 6,2                       | 85,6      | 100,5 | 92,3  | 96,8                 | 92,7                     |
| Manufacturing <sup>1)</sup>         | 75,5                      | 72,0      | 81,3  | 71,6  | 79,8                 | 77,5                     |
| Electricity, gas and water supply   | 18,3                      | 102,3     | 110,3 | 112,5 | 106,1                | 99,2                     |
| <b>Central SERBIA</b>               |                           |           |       |       |                      |                          |
| <i>Industry total</i>               | 100,0                     | 79,3      | 90,0  | 82,4  | 86,3                 | 83,5                     |
| Mining and quarrying                | 6,1                       | 85,2      | 103,9 | 92,7  | 98,5                 | 91,2                     |
| Manufacturing                       | 66,7                      | 69,2      | 79,7  | 69,1  | 76,8                 | 74,7                     |
| Electricity, gas and water supply   | 27,2                      | 102,9     | 112,2 | 112,9 | 106,1                | 99,6                     |
| <b>Vojvodina</b>                    |                           |           |       |       |                      |                          |
| <i>Industry total</i>               | 100,0                     | 76,7      | 83,8  | 76,5  | 84,8                 | 82,4                     |
| Mining and quarrying                | 6,4                       | 86,1      | 94,3  | 91,5  | 93,4                 | 95,5                     |
| Manufacturing                       | 92,0                      | 75,9      | 83,7  | 74,9  | 84,0                 | 81,4                     |
| Electricity, gas and water supply   | 1,6                       | 86,0      | 47,3  | 102,5 | 103,5                | 87,4                     |

<sup>1)</sup> The estimate of the industrial production of small-sized enterprises that are not covered by regular statistical surveys of industry was made for March 2009. The estimate was made on the basis of the sample. If the estimate of industrial production of small-sized enterprises is included, the industrial production index for March 2009/2008 average, for total industrial production stands at 87,4 and for manufacturing 80,8.

## 2. Seasonally adjusted industrial production indices

| Republic of Serbia    |  | Ø2008=100 |       |       |       |       |       |       |      |      |      |      |      |
|-----------------------|--|-----------|-------|-------|-------|-------|-------|-------|------|------|------|------|------|
|                       |  | I         | II    | III   | IV    | V     | VI    | VII   | VIII | IX   | X    | XI   | XII  |
| <b>industry total</b> |  |           |       |       |       |       |       |       |      |      |      |      |      |
| 2008                  |  | 104,5     | 104,4 | 102,6 | 101,2 | 102,0 | 103,0 | 103,1 | 99,1 | 98,7 | 96,4 | 94,3 | 90,3 |
| 2009                  |  | 86,4      | 87,1  | 88,4  |       |       |       |       |      |      |      |      |      |
| <b>manufacturing</b>  |  |           |       |       |       |       |       |       |      |      |      |      |      |
| 2008                  |  | 107,8     | 105,0 | 103,6 | 102,1 | 102,8 | 103,6 | 102,5 | 98,7 | 98,2 | 95,3 | 93,3 | 88,2 |
| 2009                  |  | 80,7      | 83,8  | 83,2  |       |       |       |       |      |      |      |      |      |

Industrial production in the Republic of Serbia, in March 2009 was by 14,2% lower compared to March 2008 and was by 12,2% lower compared to 2008 average. Industrial production for January - March 2009, compared to the same period last year was by 16,9% lower.

Observed by sectors, March 2009, compared to March 2008, in the mining and quarrying sector saw a 3,2% fall, while the production in the manufacturing sector saw a 20,2% fall, while the production in the sector for electricity, gas and water supply increased by 6,1%.

### 3. Industrial production indices, by sectors and divisions, 2009

|  | Republic of Serbia |              |              |              |             |
|--|--------------------|--------------|--------------|--------------|-------------|
|  | Ø2008=100          |              |              | III 2009     | I-III 2009  |
|  | II                 | III          | I-III        | III 2008     | I-III 2008  |
| <b>Industry total</b>  | <b>78,4</b>        | <b>87,8</b>  | <b>80,4</b>  | <b>85,8</b>  | <b>83,1</b> |
| Energy   | 99,7               | 108,4        | 108,8        | 103,5        | 98,3        |
| Intermediate goods, except energy                            | 64,9               | 74,1         | 62,7         | 66,9         | 65,1        |
| Capital goods  | 62,8               | 75,8         | 64,4         | 76,0         | 72,1        |
| Durable consumer goods                                       | 55,3               | 66,6         | 60,2         | 74,6         | 73,9        |
| Non-durable consumer goods                                   | 79,1               | 88,4         | 78,8         | 93,2         | 88,7        |
| <b>Mining and quarrying</b>                                  | <b>85,6</b>        | <b>100,5</b> | <b>92,3</b>  | <b>96,8</b>  | <b>92,7</b> |
| Mining and briquetting of coal                               | 97,8               | 116,7        | 106,2        | 105,0        | 95,2        |
| Extraction of crude petroleum and gas                        | 90,7               | 96,6         | 95,7         | 95,3         | 98,0        |
| Mining of metal ores   | 136,2              | 112,0        | 127,0        | 110,8        | 134,5       |
| Mining of non-metal ores and stone                           | 28,8               | 54,9         | 35,3         | 63,9         | 54,8        |
| <b>Manufacturing</b>   | <b>72,0</b>        | <b>81,3</b>  | <b>71,6</b>  | <b>79,8</b>  | <b>77,5</b> |
| Manufacture of food products and beverages                   | 71,5               | 86,0         | 75,4         | 91,7         | 88,2        |
| Manufacture of tobacco products                              | 72,7               | 84,4         | 72,6         | 83,9         | 79,8        |
| Manufacture of textile yarns and textiles                    | 85,8               | 85,6         | 77,4         | 71,1         | 73,9        |
| Manufacture of wearing apparel and fur                       | 80,4               | 84,0         | 77,2         | 72,6         | 73,2        |
| Manufacture of leather, leather products and footwear        | 81,1               | 92,7         | 83,0         | 82,8         | 77,3        |
| Manufacture of wood and cork products, except furniture      | 47,7               | 59,2         | 46,1         | 49,8         | 49,6        |
| Manufacture of pulp, paper and paper products                | 89,4               | 90,1         | 84,5         | 81,9         | 86,3        |
| Publishing, printing and reproduction                        | 80,0               | 96,5         | 86,4         | 118,2        | 100,6       |
| Manufacture of coke and refined petroleum products           | 92,2               | 98,0         | 98,7         | 92,3         | 96,1        |
| Manufacture of chemicals and chemical products               | 89,9               | 89,4         | 79,1         | 78,5         | 79,1        |
| Manufacture of rubber and plastic products                   | 67,2               | 80,2         | 68,6         | 73,3         | 72,9        |
| Non-metal mineral products                                   | 38,0               | 68,6         | 43,4         | 84,3         | 61,9        |
| Manufacture of basic metals                                  | 64,9               | 64,8         | 57,3         | 55,1         | 52,0        |
| Manufacture of metal products, except machinery              | 72,2               | 72,2         | 68,3         | 70,5         | 77,8        |
| Manufacture of machinery and equipment, except electrics     | 73,3               | 82,0         | 73,1         | 77,3         | 83,3        |
| Manufacture of office machinery and computers                | 71,3               | 79,6         | 74,4         | 150,4        | 97,1        |
| Manufacture of electrical machinery and apparatus            | 82,4               | 87,8         | 79,4         | 82,6         | 81,2        |
| Manufacture of radio, television and communication equipment | 19,5               | 95,4         | 44,3         | 98,2         | 44,5        |
| Manufacture of precision and optical instruments             | 52,6               | 74,3         | 54,6         | 79,5         | 58,7        |
| Manufacture of motor vehicles and trailers                   | 32,2               | 40,9         | 33,1         | 38,7         | 35,9        |
| Manufacture of other transport equipment                     | 68,0               | 76,0         | 68,1         | 119,3        | 100,5       |
| Manufacture of furniture and related products                | 53,7               | 65,6         | 59,8         | 74,4         | 73,1        |
| Recycling  | 41,1               | 64,3         | 60,5         | 48,9         | 54,9        |
| <b>Electricity, gas and water supply</b>                     | <b>102,3</b>       | <b>110,3</b> | <b>112,5</b> | <b>106,1</b> | <b>99,2</b> |
| Electricity, gas and hot water supply                        | 103,6              | 111,5        | 114,2        | 106,6        | 99,3        |
| Water collection, purification and distribution              | 88,9               | 96,9         | 94,7         | 100,5        | 98,0        |

### 3. Industrial production indices, by sectors and divisions, 2009 (continued)

|  | Central Serbia |              |              |              |             | Vojvodina   |             |              |              |             |
|--|----------------|--------------|--------------|--------------|-------------|-------------|-------------|--------------|--------------|-------------|
|  | Ø2008=100      |              |              | III 2009     | I-III 2009  | Ø2008=100   |             |              | III 2009     | I-III 2009  |
|  | II             | III          | I-III        | III 2008     | I-III 2008  | II          | III         | I-III        | III 2008     | I-III 2008  |
| <b>Industry total</b>  | <b>79,3</b>    | <b>90,0</b>  | <b>82,4</b>  | <b>86,3</b>  | <b>83,5</b> | <b>76,7</b> | <b>83,8</b> | <b>76,5</b>  | <b>84,8</b>  | <b>82,4</b> |
| Energy   | 102,1          | 112,8        | 111,9        | 105,9        | 98,9        | 91,0        | 92,7        | 98,0         | 94,0         | 96,0        |
| Intermediate goods, except energy                            | 64,7           | 72,6         | 62,0         | 65,3         | 63,5        | 65,2        | 77,1        | 64,2         | 70,1         | 68,5        |
| Capital goods  | 57,3           | 71,2         | 59,6         | 73,9         | 69,1        | 81,9        | 92,0        | 81,0         | 82,0         | 81,0        |
| Durable consumer goods                                       | 57,0           | 65,8         | 61,6         | 75,3         | 76,4        | 40,1        | 73,3        | 47,0         | 70,0         | 53,4        |
| Non-durable consumer goods                                   | 79,5           | 93,1         | 81,3         | 94,3         | 91,5        | 78,8        | 84,2        | 76,5         | 92,1         | 86,4        |
| <b>Mining and quarrying</b>                                  | <b>85,2</b>    | <b>103,9</b> | <b>92,7</b>  | <b>98,5</b>  | <b>91,2</b> | <b>86,1</b> | <b>94,3</b> | <b>91,5</b>  | <b>93,4</b>  | <b>95,5</b> |
| Mining and briquetting of coal                               | 98,3           | 117,2        | 106,8        | 105,8        | 95,5        | 49,1        | 70,8        | 53,8         | 50,1         | 55,1        |
| Extraction of crude petroleum and gas                        | 82,8           | 97,8         | 91,6         | 94,0         | 90,7        | 90,8        | 96,6        | 95,8         | 95,3         | 98,0        |
| Mining of metal ores   | 136,2          | 112,0        | 127,0        | 110,8        | 134,5       | -           | -           | -            | -            | -           |
| Mining of non-metal ores and stone                           | 30,4           | 53,7         | 36,1         | 62,3         | 55,9        | 18,6        | 63,2        | 30,4         | 75,3         | 47,3        |
| <b>Manufacturing</b>   | <b>69,2</b>    | <b>79,7</b>  | <b>69,1</b>  | <b>76,8</b>  | <b>74,7</b> | <b>75,9</b> | <b>83,7</b> | <b>74,9</b>  | <b>84,0</b>  | <b>81,4</b> |
| Manufacture of food products and beverages                   | 73,0           | 92,3         | 78,3         | 93,4         | 89,3        | 70,3        | 80,8        | 73,0         | 90,2         | 87,2        |
| Manufacture of tobacco products                              | 81,0           | 84,1         | 74,4         | 80,7         | 81,9        | 46,5        | 85,4        | 67,1         | 95,7         | 73,2        |
| Manufacture of textile yarns and textiles                    | 75,6           | 68,9         | 66,6         | 53,4         | 65,6        | 95,6        | 101,5       | 87,7         | 90,5         | 81,2        |
| Manufacture of wearing apparel and fur                       | 83,7           | 87,6         | 79,8         | 74,3         | 75,4        | 57,4        | 59,8        | 59,2         | 59,3         | 57,5        |
| Manufacture of leather, leather products and footwear        | 82,9           | 92,5         | 80,5         | 79,8         | 71,8        | 79,9        | 92,8        | 84,7         | 85,1         | 81,3        |
| Manufacture of wood and cork products, except furniture      | 38,0           | 51,7         | 40,3         | 42,6         | 46,3        | 56,0        | 65,5        | 51,0         | 56,1         | 52,1        |
| Manufacture of pulp, paper and paper products                | 91,8           | 88,1         | 86,4         | 79,8         | 88,1        | 75,0        | 101,6       | 73,3         | 94,2         | 75,3        |
| Publishing, printing and reproduction                        | 87,5           | 107,1        | 95,7         | 134,2        | 117,9       | 64,8        | 75,2        | 67,4         | 87,7         | 70,8        |
| Manufacture of coke and refined petroleum products           | 81,8           | 80,3         | 83,5         | 66,0         | 73,7        | 92,4        | 98,4        | 99,1         | 93,0         | 96,7        |
| Manufacture of chemicals and chemical products               | 87,3           | 90,2         | 77,9         | 77,4         | 85,6        | 91,0        | 89,1        | 79,7         | 78,9         | 76,8        |
| Manufacture of rubber and plastic products                   | 70,1           | 84,3         | 72,9         | 75,2         | 75,3        | 60,4        | 70,6        | 58,5         | 68,5         | 66,6        |
| Non-metal mineral products                                   | 34,7           | 70,0         | 42,4         | 88,9         | 58,5        | 42,7        | 66,8        | 44,8         | 78,4         | 67,0        |
| Manufacture of basic metals                                  | 64,9           | 61,9         | 56,3         | 51,9         | 50,4        | 65,4        | 107,4       | 71,9         | 115,6        | 83,0        |
| Manufacture of metal products, except machinery              | 64,2           | 73,0         | 64,8         | 76,4         | 72,6        | 84,6        | 70,9        | 73,7         | 62,8         | 86,3        |
| Manufacture of machinery and equipment, except electrics     | 70,7           | 82,8         | 72,6         | 77,1         | 84,7        | 84,2        | 78,9        | 75,2         | 78,3         | 78,1        |
| Manufacture of office machinery and computers                | 70,5           | 78,4         | 73,3         | 156,8        | 97,3        | 84,5        | 99,8        | 93,3         | 96,5         | 94,9        |
| Manufacture of electrical machinery and apparatus            | 83,5           | 94,1         | 81,8         | 87,9         | 88,4        | 79,8        | 73,6        | 74,2         | 70,6         | 67,6        |
| Manufacture of radio, television and communication equipment | 19,5           | 95,4         | 44,3         | 98,2         | 44,5        | -           | -           | -            | -            | -           |
| Manufacture of precision and optical instruments             | 52,4           | 70,2         | 52,4         | 73,9         | 55,5        | 55,5        | 133,3       | 86,6         | 180,8        | 118,5       |
| Manufacture of motor vehicles and trailers                   | 30,7           | 35,9         | 29,8         | 35,4         | 32,7        | 49,6        | 97,9        | 71,3         | 64,8         | 69,1        |
| Manufacture of other transport equipment                     | 63,5           | 69,6         | 62,9         | 154,3        | 107,7       | 78,1        | 90,5        | 79,9         | 85,3         | 89,6        |
| Manufacture of furniture and related products                | 55,7           | 64,6         | 61,9         | 75,0         | 76,7        | 40,9        | 72,0        | 46,9         | 71,5         | 52,8        |
| Recycling  | 43,3           | 67,9         | 64,0         | 51,6         | 58,4        | 12,3        | 16,7        | 13,9         | 12,6         | 11,8        |
| <b>Electricity, gas and water supply</b>                     | <b>102,9</b>   | <b>112,2</b> | <b>112,9</b> | <b>106,1</b> | <b>99,6</b> | <b>86,0</b> | <b>47,3</b> | <b>102,5</b> | <b>103,5</b> | <b>87,4</b> |
| Electricity, gas and hot water supply                        | 103,9          | 113,4        | 114,2        | 106,5        | 99,7        | 84,1        | 7,2         | 109,9        | 188,4        | 81,1        |
| Water collection, purification and distribution              | 89,0           | 97,2         | 94,9         | 100,7        | 97,9        | 88,4        | 95,3        | 93,6         | 99,5         | 98,4        |

Published and printed by: Statistical Office of the Republic of Serbia, Belgrade, 5, Milana Rakica St

Phone: +381-11/2412-922 (operator) • Fax: 2411-260 • www.stat.gov.rs

Responsible: Director, Dragan Vukmirovic, PhD

Issued monthly