

COMMUNICATION

Number 255 • Year LVI, 02/10/2006

SN40

Statistics of Population

SERB 255 SN40 021006

VITAL EVENTS IN THE REPUBLIC OF SERBIA, 2005

This communication includes the selected statistical data related to vital statistics in 2005: estimated population, data on the number of live births, deaths and their resultant – natural increase, as well as data on infant mortality. The cartograms present districts and municipalities with negative natural increase on the territory of Central Serbia and Vojvodina, while the relevant data for Kosovo and Metohia are not available. The same principle was applied for production of graphs. The Communication also presents births, mortality and natural increase rates. Since 1995, the Statistical Office has been publishing this Communication in regular annual periodicity. Data for 2005 have been processed according to the methodology applied for the 2002 Census.

	Population as of 30 June 2005	Live births	Deaths	Natural increase	Infant deaths	Infant mortality per 1000 live births	Per 1000 inhabitants			
							Live births	Deaths	Natural increase	
									2004	2005
REPUBLIC OF SERBIA¹⁾	7440769	72180	106771	-34591	579	8.0	9.7	14.3	-3.5	-4.6
CENTRAL SERBIA	5427851	53122	76647	-23525	446	8.4	9.8	14.1	-3.0	-4.3
VOJVODINA	2012918	19058	30124	-11066	133	7.0	9.5	15.0	-4.7	-5.5
NORTH BAČKA DISTRICT	196843	1801	3128	-1327	19	10.5	9.1	15.9	-6.0	-6.7
BAČKA TOPOLA	37005	289	659	-370	2	6.9	7.8	17.8	-8.7	-10.0
MALI IĐOŠ	13073	136	223	-87	-	-	10.4	17.1	-9.4	-6.7
SUBOTICA	146765	1376	2246	-870	17	12.4	9.4	15.3	-5.0	-5.9
CENTRAL BANAT DISTRICT	202286	1767	3438	-1671	15	8.5	8.7	17.0	-6.7	-8.3
ŽITIŠTE	19383	156	399	-243	1	6.4	8.0	20.6	-11.6	-12.5
ZRENJANIN	129568	1142	2019	-877	11	9.6	8.8	15.6	-4.9	-6.8
NOVA CRNJA	11849	118	264	-146	-	-	10.0	22.3	-12.6	-12.3
NOVI BEČEJ	25918	225	435	-210	3	13.3	8.7	16.8	-7.1	-8.1
SEČANJ	15568	126	321	-195	-	-	8.1	20.6	-10.8	-12.5
NORTH BANAT DISTRICT	160757	1440	2812	-1372	10	6.9	9.0	17.5	-7.3	-8.5
ADA	18558	156	318	-162	-	-	8.4	17.1	-6.8	-8.7
KANJIŽA	26948	242	476	-234	1	4.1	9.0	17.7	-7.2	-8.7
KIKINDA	64842	584	1039	-455	6	10.3	9.0	16.0	-5.7	-7.0
NOVI KNEŽEVAC	12346	116	252	-136	1	8.6	9.4	20.4	-9.2	-11.0
ŠENTA	24930	234	480	-246	2	8.5	9.4	19.3	-8.5	-9.9
ČOKA	13133	108	247	-139	-	-	8.2	18.8	-11.5	-10.6
SOUTH BANAT DISTRICT	310862	3033	4734	-1701	32	10.6	9.8	15.2	-4.6	-5.5
ALIBUNAR	22222	187	400	-213	5	26.7	8.4	18.0	-8.1	-9.6
BELA CRKVA	19664	176	330	-154	1	5.7	9.0	16.8	-5.2	-7.8
VRŠAC	53828	557	883	-326	6	10.8	10.3	16.4	-4.3	-6.1
KOVAČICA	27352	243	480	-237	1	4.1	8.9	17.5	-8.0	-8.7
KOVIN	37418	328	571	-243	5	15.2	8.8	15.3	-3.3	-6.5
OPOVO	10980	95	168	-73	3	31.6	8.7	15.3	-3.9	-6.6
PANČEVO	126716	1346	1663	-317	10	7.4	10.6	13.1	-3.0	-2.5
PLANDIŠTE	12682	101	239	-138	1	9.9	8.0	18.8	-11.5	-10.9

¹⁾ See explanation in the introductory notes.

1. VITAL EVENTS, 2005 (continued)

	Population as of 30 June 2005	Live births	Deaths	Natural increase	Infant deaths	Infant mortality per 1000 live births	Per 1000 inhabitants			
							Live births	Deaths	Natural increase	
									2004	2005
WEST BAČKA DISTRICT	206623	1770	3367	-1597	8	4.5	8.6	16.3	-6.8	-7.7
APATIN	31666	287	543	-256	-	-	9.1	17.1	-6.5	-8.1
KULA	47216	418	712	-294	-	-	8.9	15.1	-4.5	-6.2
ODŽACI	33795	262	623	-361	3	11.5	7.8	18.4	-8.3	-10.7
SOMBOR	93946	803	1489	-686	5	6.2	8.5	15.8	-7.5	-7.3
SOUTH BAČKA DISTRICT	598331	6330	8059	-1729	32	5.1	10.6	13.5	-2.5	-2.9
BAČ	15711	136	276	-140	1	7.4	8.7	17.6	-6.8	-8.9
BAČKA PALANKA	59314	556	886	-330	-	-	9.4	14.9	-4.6	-5.6
BAČKI PETROVAC	14317	135	220	-85	1	7.4	9.4	15.4	-5.8	-5.9
BEOČIN	15880	165	234	-69	2	12.1	10.4	14.7	-3.5	-4.3
BEČEJ	39912	391	684	-293	6	15.3	9.8	17.1	-6.7	-7.3
VRBAS	44981	509	649	-140	3	5.9	11.3	14.4	-1.0	-3.1
ŽABALJ	26952	327	347	-20	-	-	12.1	12.9	-3.4	-0.7
NOVI SAD - city	310185	3444	3738	-294	15	4.4	11.1	12.1	-0.7	-0.9
SRBOBRAN	17326	162	281	-119	1	6.2	9.4	16.2	-6.9	-6.9
SREMSKI KARLOVCI	8809	84	134	-50	1	11.9	9.5	15.2	-6.5	-5.7
TEMERIN	28309	273	346	-73	1	3.7	9.6	12.2	-3.0	-2.6
TITEL	16635	148	264	-116	1	6.8	8.9	15.9	-5.0	-7.0
SREM DISTRICT	337216	2917	4586	-1669	17	5.8	8.7	13.6	-4.3	-4.9
INĐIJA	49548	442	747	-305	2	4.5	8.9	15.1	-5.8	-6.2
IRIG	11922	77	184	-107	-	-	6.5	15.4	-7.1	-9.0
PEĆINCI	22303	180	283	-103	1	5.6	8.1	12.7	-4.3	-4.6
RUMA	59065	489	885	-396	5	10.2	8.3	15.0	-4.9	-6.7
SREMSKA MITROVICA	84604	788	1212	-424	3	3.8	9.3	14.3	-3.8	-5.0
STARA PAZOVA	72252	642	725	-83	3	4.7	8.9	10.0	-1.6	-1.1
ŠID	37522	299	550	-251	3	10.0	8.0	14.7	-6.4	-6.7
MAČVA DISTRICT	322703	3082	4707	-1625	33	10.7	9.6	14.6	-3.8	-5.0
BOGATIĆ	32225	316	530	-214	1	3.2	9.8	16.4	-6.4	-6.6
VLADIMIRCI	19737	164	381	-217	1	6.1	8.3	19.3	-8.2	-11.0
KOCELJEVA	15038	146	239	-93	3	20.5	9.7	15.9	-6.6	-6.2
KRUPANJ	19334	145	300	-155	3	20.7	7.5	15.5	-2.3	-8.0
LOZNICA	85219	857	1058	-201	11	12.8	10.1	12.4	-1.3	-2.4
LJUBOVIJA	16154	143	244	-101	1	7.0	8.9	15.1	-4.1	-6.3
MALI ZVORNIK	13709	105	158	-53	2	19.0	7.7	11.5	-0.4	-3.9
ŠABAC	121287	1206	1797	-591	11	9.1	9.9	14.8	-4.3	-4.9
KOLUBARA DISTRICT	187629	1582	2814	-1232	14	8.8	8.4	15.0	-5.6	-6.6
VALJEVO	95353	812	1298	-486	9	11.1	8.5	13.6	-3.2	-5.1
LAJKOVAC	16533	133	252	-119	-	-	8.0	15.2	-5.2	-7.2
LJIG	13985	116	271	-155	1	8.6	8.3	19.4	-9.7	-11.1
MIONICA	16043	139	266	-127	1	7.2	8.7	16.6	-10.0	-7.9
OSEČINA	14443	113	234	-121	2	17.7	7.8	16.2	-10.1	-8.4
UB	31272	269	493	-224	1	3.7	8.6	15.8	-6.6	-7.2
PODUNAVLJE DISTRICT	208297	2014	2997	-983	16	7.9	9.7	14.4	-3.0	-4.7
VELIKA PLANA	43772	368	684	-316	1	2.7	8.4	15.6	-5.9	-7.2
SMEDEREVO	109631	1136	1519	-383	13	11.4	10.4	13.9	-1.7	-3.5
SMEDEREVSKA PALANKA	54894	510	794	-284	2	3.9	9.3	14.5	-3.2	-5.2
BRANIČEVO DISTRICT	197194	1742	3351	-1609	11	6.3	8.8	17.0	-4.9	-8.2
VELIKO GRADIŠTE	20288	145	379	-234	1	6.9	7.1	18.7	-6.5	-11.5
GOLUBAC	9523	51	185	-134	-	-	5.4	19.4	-11.2	-14.1
ŽABARI	12594	90	207	-117	1	11.1	7.1	16.4	-7.5	-9.3
ŽAGUBICA	14382	101	255	-154	-	-	7.0	17.7	-7.2	-10.7
KUČEVO	18127	107	344	-237	2	18.7	5.9	19.0	-8.9	-13.1
MALO CRNIĆE	13467	92	273	-181	-	-	6.8	20.3	-5.4	-13.4
PETROVAC	33687	240	650	-410	1	4.2	7.1	19.3	-6.7	-12.2
POŽAREVAC	75126	916	1058	-142	6	6.6	12.2	14.1	-0.9	-1.9

1. VITAL EVENTS, 2005 (continued)

	Population as of 30 June 2005	Live births	Deaths	Natural increase	Infant deaths	Infant mortality per 1000 live births	Per 1000 inhabitants			
							Live births	Deaths	Natural increase	
									2004	2005
ŠUMADIJA DISTRICT	295241	2863	4320	-1457	28	9.8	9.7	14.6	-2.1	-4.9
ARANĐELOVAC	47790	507	656	-149	3	5.9	10.6	13.7	0.3	-3.1
BATOČINA	11925	96	203	-107	1	10.4	8.1	17.0	-7.1	-9.0
KNIĆ	15476	119	305	-186	1	8.4	7.7	19.7	-13.0	-12.0
KRAGUJEVAC - city	175198	1794	2316	-522	18	10.0	10.2	13.2	0.2	-3.0
LAPOVO	7977	60	141	-81	-	-	7.5	17.7	-7.4	-10.2
RAČA	12389	101	241	-140	1	9.9	8.2	19.5	-12.3	-11.3
TOPOLA	24486	186	458	-272	4	21.5	7.6	18.7	-6.5	-11.1
POMORAVLJE DISTRICT	223391	2013	3834	-1821	15	7.5	9.0	17.2	-5.7	-8.2
DESPOTOVAC	24700	184	466	-282	1	5.4	7.4	18.9	-7.4	-11.4
JAGODINA	70371	721	1097	-376	5	6.9	10.2	15.6	-4.1	-5.3
PARAĆIN	57633	536	930	-394	6	11.2	9.3	16.1	-4.6	-6.8
REKOVAC	12662	82	294	-212	-	-	6.5	23.2	-15.0	-16.7
SVILAJNAC	25150	211	488	-277	2	9.5	8.4	19.4	-6.7	-11.0
ČUPRIJA	32875	279	559	-280	1	3.6	8.5	17.0	-5.5	-8.5
BOR DISTRICT	140367	1091	2282	-1191	12	11.0	7.8	16.3	-6.4	-8.5
BOR	53383	445	753	-308	6	13.5	8.3	14.1	-3.8	-5.8
KLADOVO	22873	180	387	-207	2	11.1	7.9	16.9	-6.2	-9.0
MAJDANPEK	22116	177	318	-141	4	22.6	8.0	14.4	-6.7	-6.4
NEGOTIN	41995	289	824	-535	-	-	6.9	19.6	-9.7	-12.7
ZAJEČAR DISTRICT	131896	935	2621	-1686	9	9.6	7.1	19.9	-12.3	-12.8
BOLJEVAC	14947	107	352	-245	1	9.3	7.2	23.5	-13.0	-16.4
ZAJEČAR	64100	493	1120	-627	4	8.1	7.7	17.5	-11.1	-9.8
KNJAŽEVAC	35047	214	803	-589	4	18.7	6.1	22.9	-14.2	-16.8
SOKOBANJA	17802	121	346	-225	-	-	6.8	19.4	-12.4	-12.6
ZLATIBOR DISTRICT	307622	2970	3760	-790	31	10.4	9.7	12.2	-1.9	-2.6
ARILJE	19602	184	228	-44	-	-	9.4	11.6	-1.5	-2.2
BAJINA BAŠTA	28556	252	407	-155	5	19.8	8.8	14.3	-4.7	-5.4
KOSJERIĆ	13382	108	221	-113	1	9.3	8.1	16.5	-10.2	-8.4
NOVA VAROŠ	19213	167	199	-32	1	6.0	8.7	10.4	-2.7	-1.7
POŽEGA	31432	298	409	-111	5	16.8	9.5	13.0	-7.1	-3.5
PRIBOJ	29447	258	333	-75	1	3.9	8.8	11.3	-1.3	-2.5
PRIJEPOLJE	40438	442	472	-30	5	11.3	10.9	11.7	2.0	-0.7
SJENICA	28120	375	270	105	5	13.3	13.3	9.6	7.1	3.7
UŽICE	81923	773	962	-189	5	6.5	9.4	11.7	-1.9	-2.3
ČAJETINA	15509	113	259	-146	3	26.5	7.3	16.7	-5.2	-9.4
MORAVICA DISTRICT	221523	1971	3154	-1183	11	5.6	8.9	14.2	-4.5	-5.3
GORNJI MILANOVAC	46492	391	726	-335	4	10.2	8.4	15.6	-6.6	-7.2
IVANJICA	34594	326	411	-85	1	3.1	9.4	11.9	-3.2	-2.5
LUČANI	23572	158	413	-255	2	12.7	6.7	17.5	-9.4	-10.8
ČAČAK	116865	1096	1604	-508	4	3.6	9.4	13.7	-3.0	-4.3
RAŠKA DISTRICT	295575	4316	3498	818	35	8.1	14.6	11.8	3.9	2.8
VRNJAČKA BANJA	26556	254	377	-123	-	-	9.6	14.2	-3.3	-4.6
KRALJEVO	120625	1340	1807	-467	6	4.5	11.1	15.0	-2.6	-3.9
NOVI PAZAR	90947	1823	731	1092	19	10.4	20.0	8.0	12.1	12.0
RAŠKA	26265	248	375	-127	2	8.1	9.4	14.3	-5.3	-4.8
TUTIN	31182	651	208	443	8	12.3	20.9	6.7	19.5	14.2
RASINA DISTRICT	253823	2220	3997	-1777	22	9.9	8.7	15.7	-5.2	-7.0
ALEKSANDROVAC	28593	211	412	-201	1	4.7	7.4	14.4	-5.0	-7.0
BRUS	17961	137	278	-141	-	-	7.6	15.5	-7.3	-7.9
VARVARIN	19469	130	391	-261	1	7.7	6.7	20.1	-9.0	-13.4
KRUŠEVAC	130083	1299	1932	-633	17	13.1	10.0	14.9	-3.7	-4.9
TRSTENIK	47422	364	801	-437	2	5.5	7.7	16.9	-5.3	-9.2
ĆIČEVAC	10295	79	183	-104	1	12.7	7.7	17.8	-12.0	-10.1

1. VITAL EVENTS, 2005 (continued)

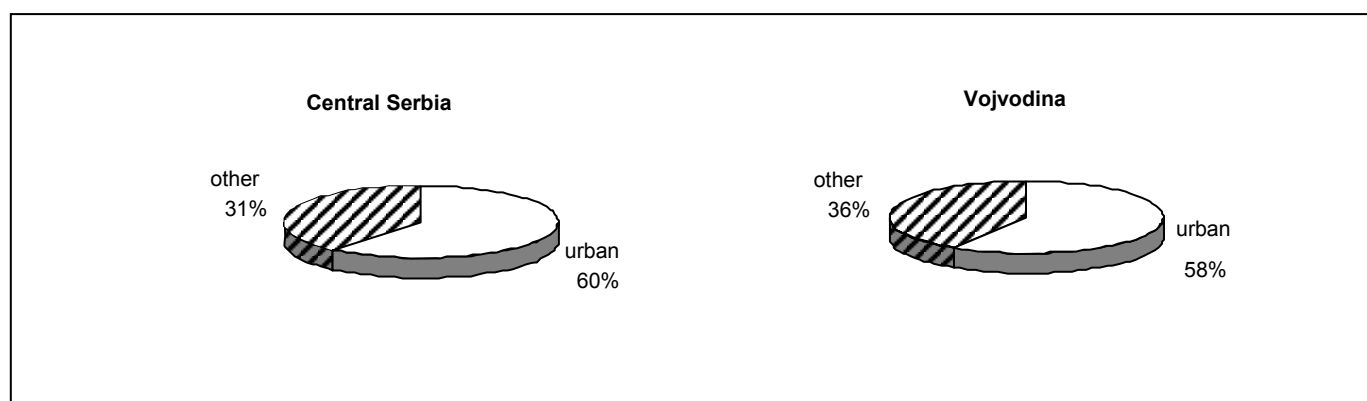
	Population as of 30 June 2005	Live births	Deaths	Natural increase	Infant deaths	Infant mortality per 1000 live births	Per 1000 inhabitants			
							Live births	Deaths	Natural increase	
									2004	2005
NIŠAVA DISTRICT	379076	3550	5597	-2047	29	8.2	9.4	14.8	-4.1	-5.4
CITY OF NIŠ	253214	2591	3221	-630	20	7.7	10.2	12.7	-1.3	-2.5
MEDIANA	88271	943	1169	-226	9	9.5	10.7	13.2	...	-2.6
PALILULA	72996	733	830	-97	8	10.9	10.0	11.4	...	-1.3
PANTELEJ	42719	391	527	-136	1	2.6	9.2	12.3	...	-3.2
CRVENI KRST	33847	405	460	-55	1	2.5	12.0	13.6	...	-1.6
NIŠKA BANJA	15381	119	235	-116	1	8.4	7.7	15.3	-5.4	-7.5
ALEKSINAC	55741	503	1015	-512	7	13.9	9.0	18.2	-8.8	-9.2
GADŽIN HAN	9676	38	271	-233	-	-	3.9	28.0	-19.7	-24.1
DOLJEVAC	18939	147	301	-154	1	6.8	7.8	15.9	-5.9	-8.1
MEROŠINA	14442	120	234	-114	1	8.3	8.3	16.2	-7.0	-7.9
RAŽANJ	10539	55	241	-186	-	-	5.2	22.9	-14.4	-17.6
SVRLJIG	16525	96	314	-218	-	-	5.8	19.0	-9.2	-13.2
TOPLICA DISTRICT	99288	956	1620	-664	13	13.6	9.6	16.3	-5.3	-6.7
BLACE	13185	93	219	-126	1	10.8	7.1	16.6	-6.2	-9.6
ŽITORAĐA	17720	148	267	-119	2	13.5	8.4	15.1	-7.0	-6.7
KURŠUMLIJA	20730	202	351	-149	2	9.9	9.7	16.9	-7.5	-7.2
PROKUPLJE	47653	513	783	-270	8	15.6	10.8	16.4	-3.5	-5.7
PIROT DISTRICT	101538	743	1784	-1041	6	8.1	7.3	17.6	-9.1	-10.3
BABUŠNICA	14552	105	343	-238	1	9.5	7.2	23.6	-18.1	-16.4
BELA PALANKA	13645	92	291	-199	-	-	6.7	21.3	-10.4	-14.6
DIMITROVGRAD	11167	64	220	-156	1	15.6	5.7	19.7	-10.4	-14.0
PIROT	62174	482	930	-448	4	8.3	7.8	15.0	-6.5	-7.2
JABLANICA DISTRICT	236062	2334	3585	-1251	18	7.7	9.9	15.2	-3.5	-5.3
BOJNIK	12501	149	271	-122	3	20.1	11.9	21.7	-6.6	-9.8
VLASOTINCE	32518	318	445	-127	2	6.3	9.8	13.7	-5.4	-3.9
LEBANE	24280	218	367	-149	2	9.2	9.0	15.1	-5.3	-6.1
LESKOVAC	154113	1566	2253	-687	11	7.0	10.2	14.6	-2.5	-4.5
MEDVEĐA	10491	72	181	-109	-	-	6.9	17.3	-1.9	-10.4
CRNA TRAVA	2159	11	68	-57	-	-	5.1	31.5	-18.5	-26.4
PČINJA DISTRICT	229707	3013	2571	442	24	8.0	13.1	11.2	4.8	1.9
BOSILEGRAD	9218	77	190	-113	-	-	8.4	20.6	-12.6	-12.3
BUJANOVAC	44865	557	388	169	5	9.0	12.4	8.6	9.3	3.8
VLADIČIN HAN	23079	243	328	-85	3	12.3	10.5	14.2	-3.4	-3.7
VRANJE	87215	1109	965	144	8	7.2	12.7	11.1	1.7	1.7
PREŠEVO	37887	737	259	478	4	5.4	19.5	6.8	22.4	12.6
SURDULICA	21487	232	351	-119	4	17.2	10.8	16.3	-3.4	-5.5
TRGOVIŠTE	5956	58	90	-32	-	-	9.7	15.1	-5.8	-5.4
CITY OF BELGRADE	1596919	15727	20155	-4428	119	7.6	9.8	12.6	-2.3	-2.8
BARAJEVO	25000	228	349	-121	1	4.4	9.1	14.0	-5.1	-4.8
VOŽDOVAC	153334	1411	1937	-526	10	7.1	9.2	12.6	-2.5	-3.4
VRAČAR	56499	453	970	-517	1	2.2	8.0	17.2	-9.0	-9.2
GROCKA	78605	736	838	-102	6	8.2	9.4	10.7	0.4	-1.3
ZVEZDARA	137523	1403	1736	-333	17	12.1	10.2	12.6	-2.0	-2.4
ZEMUN	155222	1750	1878	-128	6	3.4	11.3	12.1	-1.1	-0.8
LAZAREVAC	58717	612	787	-175	11	18.0	10.4	13.4	-2.5	-3.0
MLADENOVAC	52108	507	785	-278	3	5.9	9.7	15.1	-4.7	-5.3
NOVI BEOGRAD	218439	2019	2477	-458	18	8.9	9.2	11.3	-2.4	-2.1
OBRENOVAC	71340	751	932	-181	4	5.3	10.5	13.1	-1.8	-2.5
PALILULA	160542	1736	1983	-247	18	10.4	10.8	12.4	-1.4	-1.5
RAKOVIĆA	100783	977	1209	-232	4	4.1	9.7	12.0	-1.3	-2.3
SAVSKI VENAC	41318	431	719	-288	4	9.3	10.4	17.4	-6.1	-7.0
SOPOT	20339	166	368	-202	-	-	8.2	18.1	-6.5	-9.9
STARI GRAD	54242	433	848	-415	3	6.9	8.0	15.6	-7.4	-7.7
SURČIN	39160	301	436	-135	3	10.0	7.7	11.1	...	-3.4
ČUKARICA	173748	1813	1903	-90	10	5.5	10.4	11.0	-0.4	-0.5

2. LIVE BIRTHS BY GENDER, AGE OF MOTHER AND TYPE OF SETTLEMENT, 2005

Type of settlement	Gender	Total	Age of mother									Mean age of mother	
			under 15	15-19	20-24	25-29	30-34	35-39	40-44	45-49	50 and over		un-known
REPUBLIC OF SERBIA¹⁾	A	72180	60	5228	20588	23989	15452	5447	1020	44	9	343	27.4
	M	37158	26	2722	10483	12413	7961	2830	524	24	4	171	27.4
	F	35022	34	2506	10105	11576	7491	2617	496	20	5	172	27.4
URBAN	A	46754	29	2535	11610	16166	11432	3984	732	31	4	231	28.0
	M	24046	14	1343	5852	8401	5854	2078	368	17	2	117	28.0
	F	22708	15	1192	5758	7765	5578	1906	364	14	2	114	28.0
OTHER	A	25426	31	2693	8978	7823	4020	1463	288	13	5	112	26.2
	M	13112	12	1379	4631	4012	2107	752	156	7	2	54	26.2
	F	12314	19	1314	4347	3811	1913	711	132	6	3	58	26.2
CENTRAL SERBIA	A	53122	42	3768	15058	17632	11528	4049	742	32	9	262	27.4
	M	27241	22	1950	7635	9098	5901	2098	379	20	4	134	27.4
	F	25881	20	1818	7423	8534	5627	1951	363	12	5	128	27.4
URBAN	A	34975	22	1833	8631	11998	8684	3055	551	23	4	174	28.1
	M	17925	11	965	4330	6223	4428	1588	276	14	2	88	28.1
	F	17050	11	868	4301	5775	4256	1467	275	9	2	86	28.1
OTHER	A	18147	20	1935	6427	5634	2844	994	191	9	5	88	26.1
	M	9316	11	985	3305	2875	1473	510	103	6	2	46	26.2
	F	8831	9	950	3122	2759	1371	484	88	3	3	42	26.1
VOJVODINA	A	19058	18	1460	5530	6357	3924	1398	278	12	-	81	27.3
	M	9917	4	772	2848	3315	2060	732	145	4	-	37	27.3
	F	9141	14	688	2682	3042	1864	666	133	8	-	44	27.2
URBAN	A	11779	7	702	2979	4168	2748	929	181	8	-	57	27.8
	M	6121	3	378	1522	2178	1426	490	92	3	-	29	27.8
	F	5658	4	324	1457	1990	1322	439	89	5	-	28	27.8
OTHER	A	7279	11	758	2551	2189	1176	469	97	4	-	24	26.3
	M	3796	1	394	1326	1137	634	242	53	1	-	8	26.4
	F	3483	10	364	1225	1052	542	227	44	3	-	16	26.3
CITY OF BELGRADE	A	15727	11	614	3103	5393	4453	1731	320	8	4	90	28.9
	M	8031	5	312	1584	2816	2228	870	161	4	1	50	28.9
	F	7696	6	302	1519	2577	2225	861	159	4	3	40	29.0
URBAN	A	13702	10	458	2453	4714	4074	1602	296	8	3	84	29.3
	M	6990	5	240	1239	2465	2045	797	148	4	1	46	29.2
	F	6712	5	218	1214	2249	2029	805	148	4	2	38	29.3
OTHER	A	2025	1	156	650	679	379	129	24	-	1	6	26.9
	M	1041	-	72	345	351	183	73	13	-	-	4	27.0
	F	984	1	84	305	328	196	56	11	-	1	2	26.8
BELGRADE – SETTLEMENT	A	11839	8	332	1923	4060	3698	1475	260	6	2	75	29.6
	M	6032	4	172	987	2113	1849	729	131	2	1	44	29.5
	F	5807	4	160	936	1947	1849	746	129	4	1	31	29.6

¹⁾ See explanation in the introductory notes.

Live births in 2005, by type of settlement (in %)



3. DEATHS BY GENDER, AGE AND TYPE OF SETTLEMENT, 2005

Type of settlement	Gender	Total	Age													Mean age of the dead
			under 1 year	1-4	5-14	15-24	25-34	35-44	45-49	50-54	55-64	65-74	75-84	85 and over	un-known	
REPUBLIC OF SERBIA¹⁾	A	106771	579	88	136	560	924	2036	2458	4786	12749	30751	40694	10921	89	71.8
	M	54336	358	49	84	418	663	1314	1640	3160	8205	16990	17388	4006	61	69.3
	F	52435	221	39	52	142	261	722	818	1626	4544	13761	23306	6915	28	74.4
URBAN	A	54937	378	45	75	356	594	1209	1471	2910	7504	16194	19095	5045	61	70.5
	M	28151	228	26	50	269	440	758	947	1833	4766	8967	8047	1767	53	67.9
	F	26786	150	19	25	87	154	451	524	1077	2738	7227	11048	3278	8	73.2
OTHER	A	51834	201	43	61	204	330	827	987	1876	5245	14557	21599	5876	28	73.2
	M	26185	130	23	34	149	223	556	693	1327	3439	8023	9341	2239	8	70.8
	F	25649	71	20	27	55	107	271	294	549	1806	6534	12258	3637	20	75.6
CENTRAL SERBIA	A	76647	446	70	88	396	665	1408	1671	3351	8702	21851	30083	7852	64	72.0
	M	39119	276	40	55	291	472	901	1108	2193	5568	12062	13128	2980	45	69.7
	F	37528	170	30	33	105	193	507	563	1158	3134	9789	16955	4872	19	74.4
URBAN	A	38542	302	37	50	262	436	842	1048	2076	5185	11346	13476	3439	43	70.3
	M	19883	182	21	35	195	318	520	675	1291	3258	6297	5799	1253	39	67.9
	F	18659	120	16	15	67	118	322	373	785	1927	5049	7677	2186	4	72.9
OTHER	A	38105	144	33	38	134	229	566	623	1275	3517	10505	16607	4413	21	73.7
	M	19236	94	19	20	96	154	381	433	902	2310	5765	7329	1727	6	71.5
	F	18869	50	14	18	38	75	185	190	373	1207	4740	9278	2686	15	76.0
VOJVODINA	A	30124	133	18	48	164	259	628	787	1435	4047	8900	10611	3069	25	71.2
	M	15217	82	9	29	127	191	413	532	967	2637	4928	4260	1026	16	68.2
	F	14907	51	9	19	37	68	215	255	468	1410	3972	6351	2043	9	74.2
URBAN	A	16395	76	8	25	94	158	367	423	834	2319	4848	5619	1606	18	70.8
	M	8268	46	5	15	74	122	238	272	542	1508	2670	2248	514	14	67.8
	F	8127	30	3	10	20	36	129	151	292	811	2178	3371	1092	4	73.9
OTHER	A	13729	57	10	23	70	101	261	364	601	1728	4052	4992	1463	7	71.6
	M	6949	36	4	14	53	69	175	260	425	1129	2258	2012	512	2	68.7
	F	6780	21	6	9	17	32	86	104	176	599	1794	2980	951	5	74.6
CITY OF BELGRADE	A	20155	119	13	19	145	223	423	482	1065	2577	5657	7293	2096	43	71.1
	M	10357	75	6	10	111	165	269	310	669	1654	3154	3149	747	38	68.5
	F	9798	44	7	9	34	58	154	172	396	923	2503	4144	1349	5	73.8
URBAN	A	16818	103	10	15	126	192	354	406	896	2131	4769	5982	1795	39	71.1
	M	8592	63	5	9	95	145	219	260	543	1350	2649	2579	640	35	68.5
	F	8226	40	5	6	31	47	135	146	353	781	2120	3403	1155	4	73.7
OTHER	A	3337	16	3	4	19	31	69	76	169	446	888	1311	301	4	71.4
	M	1765	12	1	1	16	20	50	50	126	304	505	570	107	3	68.5
	F	1572	4	2	3	3	11	19	26	43	142	383	741	194	1	74.5
BELGRADE – SETTLEMENT	A	14930	87	10	15	110	163	307	346	772	1860	4180	5375	1669	36	71.3
	M	7600	54	5	9	84	121	189	224	475	1171	2324	2314	598	32	68.8
	F	7330	33	5	6	26	42	118	122	297	689	1856	3061	1071	4	73.9

4. DEATHS BY CAUSE AND MEDICAL TREATMENT, 2005

	Total ³⁾	Cause of death						Medically treated before death
		natural ³⁾	Deaths by violence					
			all ³⁾	accidents ²⁾	suicides	homicides	other ²⁾	
REPUBLIC OF SERBIA¹⁾	106771	97358	3809	1717	1442	162	488	94667
CENTRAL SERBIA	76647	69410	2525	1128	927	110	360	67483
VOJVODINA	30124	27948	1284	589	515	52	128	27184
CITY OF BELGRADE	20155	18041	684	270	220	39	155	17799
BELGRADE - SETTLEMENT	14930	13320	492	190	149	33	120	13256

¹⁾ See explanation in the introductory notes.

²⁾ Data in the column 'other' include data from the sub-group "Event with non – specified intention", which was previously shown in the column "accidents".

³⁾ The difference between 'total' and 'all' represents 'unknown'.

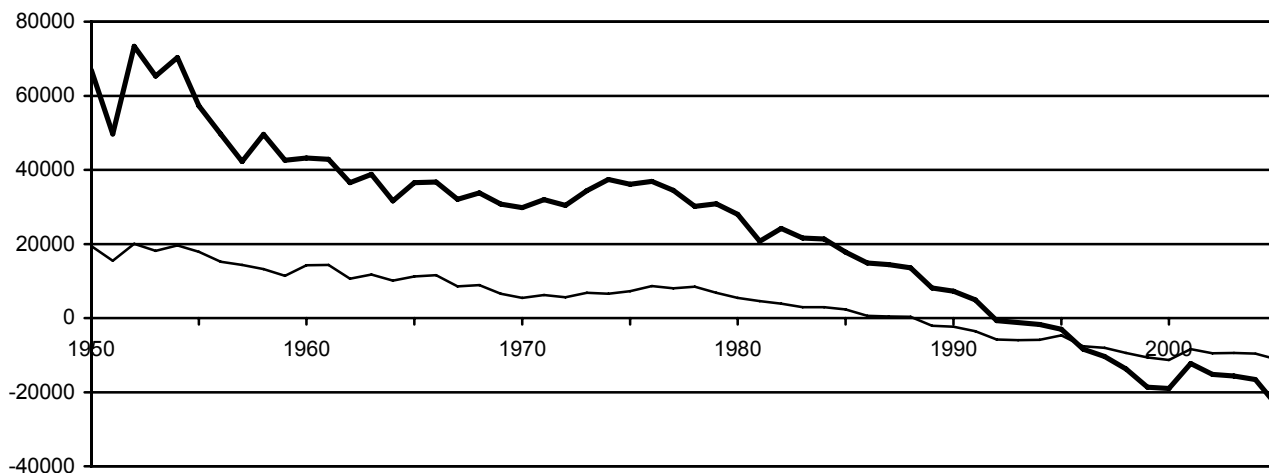
5. DEATHS BY CAUSE, GENDER AND TYPE OF SETTLEMENT, 2005

Cause of death	Gender	Type of settlement								
		Republic of Serbia ¹⁾			Central Serbia			Vojvodina		
		all	urban	other	all	urban	other	all	urban	other
TOTAL	A	106771	54937	51834	76647	38542	38105	30124	16395	13729
	M	54336	28151	26185	39119	19883	19236	15217	8268	6949
	F	52435	26786	25649	37528	18659	18869	14907	8127	6780
Infectious and parasitic diseases (A00-B99)	A	546	308	238	401	232	169	145	76	69
	M	355	195	160	259	147	112	96	48	48
	F	191	113	78	142	85	57	49	28	21
Neoplasms (C00-D49)	A	20116	11975	8141	14171	8449	5722	5945	3526	2419
	M	11374	6516	4858	7950	4553	3397	3424	1963	1461
	F	8742	5459	3283	6221	3896	2325	2521	1563	958
Diseases of the blood, blood-forming organs and some immunodeficiency disorders (D50-D99)	A	157	102	55	107	63	44	50	39	11
	M	68	42	26	46	26	20	22	16	6
	F	89	60	29	61	37	24	28	23	5
Endocrine and metabolic diseases (E00-E99)	A	2689	1503	1186	1725	934	791	964	569	395
	M	1111	636	475	700	397	303	411	239	172
	F	1578	867	711	1025	537	488	553	330	223
Mental and behavioural disorders (F00-F99)	A	751	406	345	420	210	210	331	196	135
	M	487	250	237	285	138	147	202	112	90
	F	264	156	108	135	72	63	129	84	45
Diseases of the nervous system and sense Organs (G00-H99)	A	1213	717	496	906	526	380	307	191	116
	M	661	391	270	494	282	212	167	109	58
	F	552	326	226	412	244	168	140	82	58
Diseases of the circulatory system (I00-I99)	A	60684	29194	31490	43582	20401	23181	17102	8793	8309
	M	27969	13697	14272	20248	9699	10549	7721	3998	3723
	F	32715	15497	17218	23334	10702	12632	9381	4795	4586
Diseases of the respiratory system (J00-J99)	A	4256	2077	2179	3028	1410	1618	1228	667	561
	M	2692	1237	1455	1939	858	1081	753	379	374
	F	1564	840	724	1089	552	537	475	288	187
Diseases of the digestive system (K00-K99)	A	3580	2075	1505	2489	1441	1048	1091	634	457
	M	2055	1172	883	1406	807	599	649	365	284
	F	1525	903	622	1083	634	449	442	269	173
Diseases of the skin and subcutaneous tissue (L00-L99)	A	50	23	27	31	12	19	19	11	8
	M	19	6	13	13	4	9	6	2	4
	F	31	17	14	18	8	10	13	9	4
Diseases of the musculoskeletal system And the connective tissue (M00-M99)	A	138	84	54	65	37	28	73	47	26
	M	39	26	13	16	10	6	23	16	7
	F	99	58	41	49	27	22	50	31	19
Diseases of the genitourinary system (N00-N99)	A	1701	893	808	1347	705	642	354	188	166
	M	977	490	487	785	390	395	192	100	92
	F	724	403	321	562	315	247	162	88	74
Pregnancy, childbirth and puerperium (O00-O99)	A	10	4	6	7	3	4	3	1	2
	M	-	-	-	-	-	-	-	-	-
	F	10	4	6	7	3	4	3	1	2
Conditions in the perinatal period (P00-P99)	A	353	230	123	273	184	89	80	46	34
	M	218	139	79	169	110	59	49	29	20
	F	135	91	44	104	74	30	31	17	14
Congenital anomalies, deformations And chromosome abnormalities (Q00-Q99)	A	165	106	59	124	79	45	41	27	14
	M	96	60	36	76	49	27	20	11	9
	F	69	46	23	48	30	18	21	16	5
Symptoms, signs and abnormal Clinical and laboratory findings (R00-R99)	A	6553	3206	3347	5446	2513	2933	1107	693	414
	M	3420	1791	1629	2864	1430	1434	556	361	195
	F	3133	1415	1718	2582	1083	1499	551	332	219
Injuries, poisonings and consequencies Of external causes (S00-T99)	A	3809	2034	1775	2525	1343	1182	1284	691	593
	M	2795	1503	1292	1869	983	886	926	520	406
	F	1014	531	483	656	360	296	358	171	187

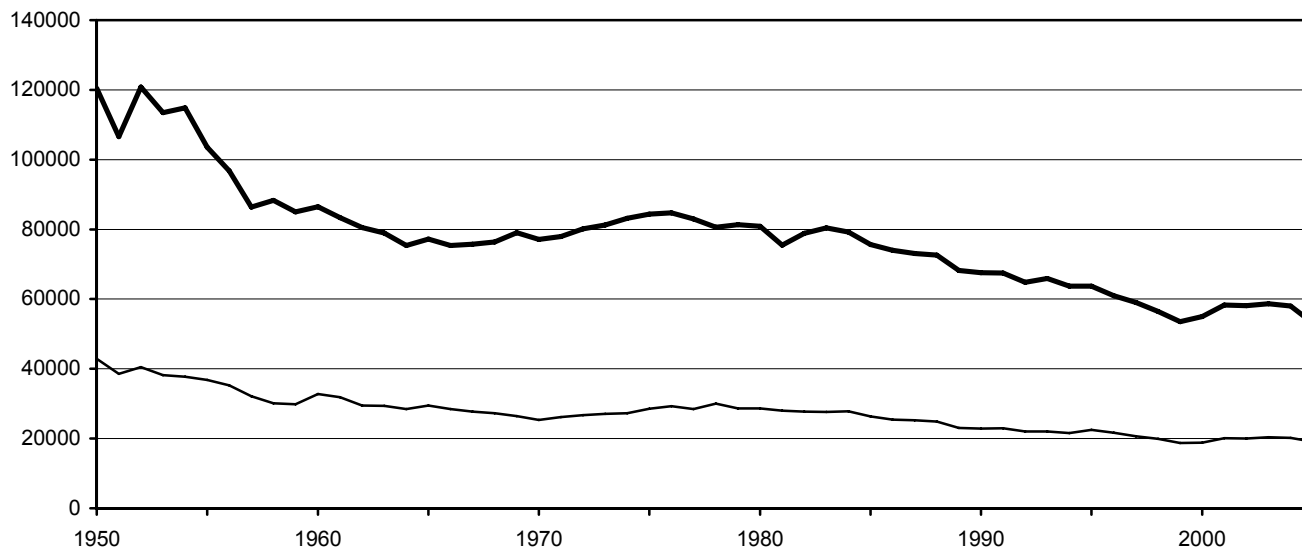
¹⁾ See explanation in the introductory notes.

Population changes in the Republic of Serbia, 1950-2005

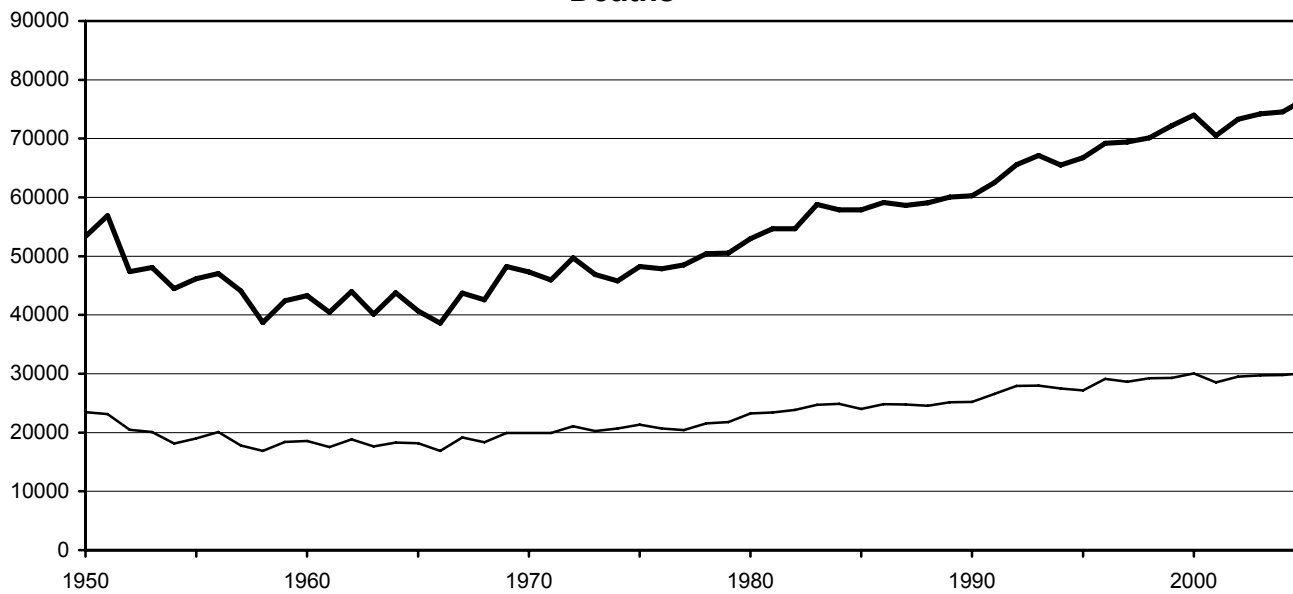
Natural increase



Live births



Deaths



Central Serbia
 Vojvodina

MUNICIPALITIES WITH NEGATIVE NATURAL INCREASE IN THE REPUBLIC OF SERBIA, 2005



Урађено у Републичком заводу за статистику

DISTRICTS WITH NEGATIVE NATURAL INCREASE IN THE REPUBLIC OF SERBIA, 2005



Published and printed by: Statistical Office of the Republic of Serbia, Milana Rakica 5, Belgrade
Phone: 2412-922 • Fax: 2411- 260 • www.statserb.sr.gov.yu
Responsible: Dragan Vukmirovic, PhD, Director
Circulation: 500 • Issued annually