

COMMUNICATION

PM10

Number 70 • Issue LV, April 4, 2005
Turnover Statistics

SERB 70 PM10 010405

Turnover in retail trade in the Republic of Serbia, february 2005 - Previous results -

Turnover in retail trade

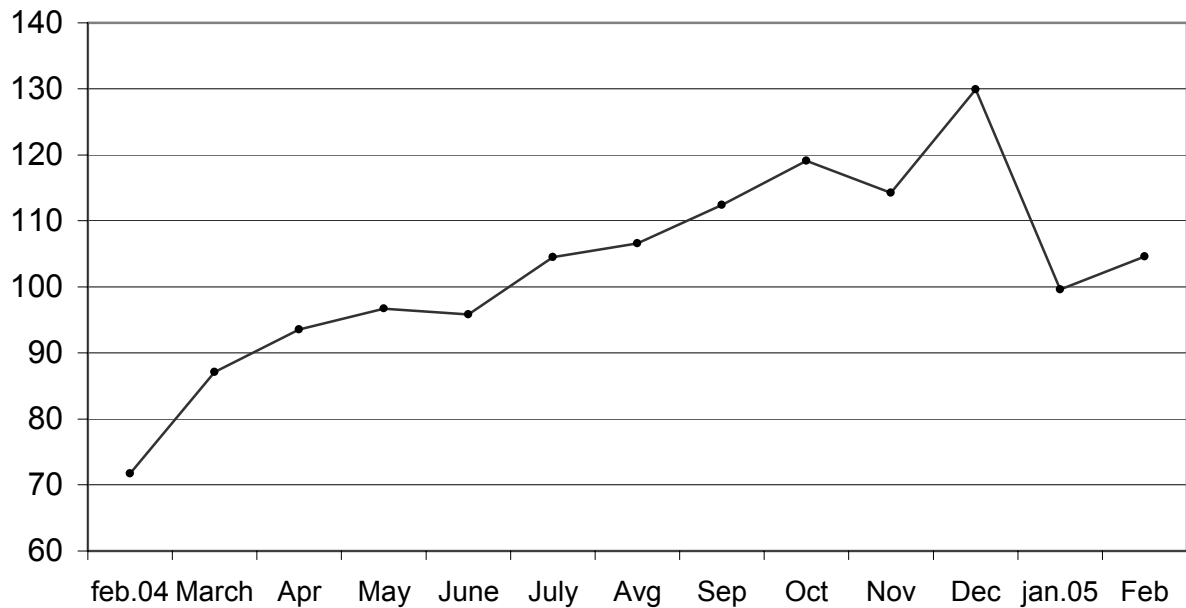
| | <u>II 2005</u> II 2004 | <u>II 2005</u> I 2005 | <u>I-II 2005</u> I-II 2004 | <u>I 2005</u> Ø 2004 | <u>II 2005</u> Ø 2004 |
|--|---------------------------|--------------------------|-------------------------------|-------------------------|--------------------------|
| Turnover indices at current prices | | | | | |
| Republic of Serbia | 146,0 | 105,1 | 145,6 | 99,6 | 104,6 |
| Central Serbia | 138,8 | 104,7 | 138,2 | 94,5 | 98,9 |
| Vojvodina | 167,9 | 106,0 | 168,8 | 115,6 | 122,5 |
| Turnover indices at constant prices | | | | | |
| Република Србија | 127,1 | 103,0 | 127,8 | 92,1 | 94,8 |
| Central Serbia | 120,8 | 102,4 | 121,3 | 87,5 | 89,6 |
| Vojvodina | 146,5 | 104,4 | 147,8 | 106,2 | 110,9 |

According to the previous results, turnover in retail sales in the Republic of Serbia in February 2005, when compared to February 2004, rose by 46% at current prices, and by 27,1% at constant prices. In February 2005, when compared to the previous month this year, the turnover rose by 5,1% at current prices and by 3% at constant prices.

In the first two months of the year 2005, when compared to the same period in 2004, the turnover in retail trade saw a 45,6% increase at current prices, and a 27,8 % increase at constant prices.

Turnover of goods in retail sale - current prices - Republic of Serbia -

Ø2004=100



Notes: The indices published in this communication have been obtained from “Monthly Survey of Retail Trade”, which has been carried out since January 2003 on the sample of chosen enterprises of all types of property that deal with retail trade, no matter whether retail trade is their main activity or not. Big enterprises have been included in the sample, on the basis of the accomplished turnover in retail sale in the previous period, while others have been chosen by the random sample method.

The value of turnover in retail sale since January 1, 2005 includes the VAT , unlike the previous period (basis) when the turnover tax was calculated.

Turnover at constant prices indices have been obtained by deflating the current prices indices by corresponding turnover in retail trade indices, electricity excluded.

All published indices should be treated as previous results, which means there can be some corrections on the basis of the obtained results in the quarterly statistical survey “Quarterly Survey of Retail Trade”, published as a separate communication.

Published and printed by: Statistical Office of the Republic of Serbia, Milana Rakica 5, Belgrade
Telephone:+381 11 2412922, Fax: +381 11 411260, www.statserb.sr.gov.yu
Responsible: Dragan Vukmirovic, Phd, Director
Circulation:130, Issued monthly