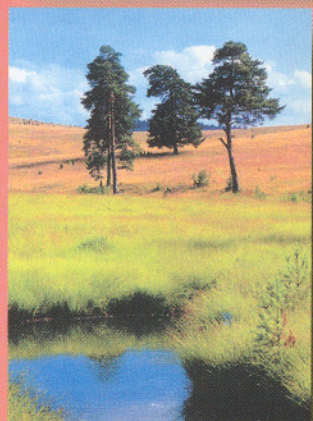


# SERBIA IN FIGURES 2002

Republic of Serbia - Republic Statistical Office



Belgrade, September 2002

Republic of Serbia  
Republic Statistical Office

# **SERBIA IN FIGURES 2002**

Belgrade, September 2002

**Published by** Republic Statistical Office  
Belgrade, Milana Rakića 5, phone 412-922, fax 411-260

**Director** Zoran Jančić

**Editorial Board** Jovanka Šalinović, Slavko Kapuran,  
Zoran Gligorić, Zvonko Štajner, M. Sc.  
**Printed by** Republic Statistical Office

## PREFACE

According to the Constitution accepted in 1990 the Republic of Serbia is a democratic state of all its citizens. The Republic of Serbia is represented by its President. National Assembly has constitutive and legislative power. The Government has executive power. Courts have judicial power.

The Republic of Serbia covers an area of 88361 km<sup>2</sup> (86,7% of the area of FR Yugoslavia). The length of the border is 2397 km. It covers the central section of the Balcan Peninsula and the southern part of the Pannonian Plane. The northern part of the Republic is lowland and the central and southern parts are hilly and mountainous. There are more than 15 mountain peaks rising to over 2000 metres above sea level. Its rivers belong to the basins of the Black, Adriatic and Aegean Seas. Among the navigable rivers are the Danube, Sava and Tisa. Some of the biggest lakes are: Lake od Djerdap (253 km<sup>2</sup>), Lake of Vlasina (16 km<sup>2</sup>), Lake of Perućac (12,4 km<sup>2</sup>), Gazivode (11,9 km<sup>2</sup>), Lake of Zvornik (8,1 km<sup>2</sup>) etc. The most famous national parks are: Djerdap (64000 ha), Šar Planina (39000 ha), Fruška Gora (22460 ha), Tara (19200 ha), Kopaonik (12000 ha). A moderate continental climate predominates.

The territorial organization of the Republic of Serbia consists of 185 communities and 4 cities (Kragujevac, Niš, Novi Sad and Priština) in which the local self-government is achieved. Within the Republic of Serbia are Vojvodina and Kosovo and Metohia like a form of territorial autonomy. The Republic of Serbia has 6152 settlements and 2707402 households (according to 1991 Census). Negative rate of natural increase was registered in 49% of settlements.

According to the results of 1991 Census the Republic of Serbia has 9778991 inhabitants (94,1% of the population of FR Yugoslavia), of which 2013889 live in Vojvodina, 1956196 in Kosovo and Metohia (estimate) and in Belgrade, the capital of the Republic of Serbia, 1602226 inhabitants.

The population density runs to 111 inhabitants per square km. In this multinational land Serbs comprise 66,0% of the population, Montenegrins 1,4%. Among the national minorities the most numerous are Albanians (ethnic) 17,1%, Hungarians 3,5%, followed by Moslems (ethnic), Romanies, Croats, Slovaks, Romanians and others.

Profession of religion is free for all citizens. According to the 1991 Census there were 65% inhabitants of Orthodox religion, followed by Catholic 5%, Islamic 2,2%, Protestant 0,9% and others.

Belgrade, September 2002

Director,  
Zoran Jančić

## Population

	1948	1953	1961	1971	1981	1991
Population (thousands)	6528	6979	7642	8447	9313	9779
Economically active population as % of total	50,9	48,4	47,3	45,7	44,8	44,2
Agricultural population as % of total	72,3	66,7	56,1	44,0	25,4	17,9
Rates per thousand						
Live births	26,7	26,6	20,3	17,9	16,2	11,7 <sup>1)</sup>
Deaths	13,2	12,1	9,1	9,0	9,4	11,3 <sup>1)</sup>
Natural increase	13,5	14,5	11,2	8,9	6,8	0,4 <sup>1)</sup>
Average life expectancy						
Males	28,0	28,6	29,6	31,2	32,8	35,97 <sup>2)</sup>
Females	29,8	30,0	31,5	33,0	34,6	37,97 <sup>2)</sup>
Average age of population						
Males	49,8	57,1	62,7	66,1	68,1	69,81 <sup>3)</sup>
Females	54,2	58,8	64,7	69,9	72,7	74,81 <sup>3)</sup>

1) Data for 2000 including data for Kosovo and Metohia for 1997.

2) Data for 1999. Data for Kosovo and Metohia are not available.

3) Period 1998 -1999. Data for Kosovo and Metohia are not available.

## Population (continued)

	1961	1971	1981	1991	2000 <sup>1)</sup>
Average number of children per woman	2,5	2,3	2,1	2,1	1,4
Marriages per 1000 people	9,2	9,2	7,4	5,9	5,5 <sup>2)</sup>
Divorces per 1000 people	1,4	1,2	1,0	0,8	0,8 <sup>2)</sup>
Infant mortality, per 1000 live births	82,9	53,1	35,0	21,6	13,4 <sup>2)</sup>
Deaths by suicide per 100000 inhabitants	29,0	13,6	14,4	15,6	20,1
Death by suicide: men per 100000 men	39,1	19,0	20,1	21,0	28,5
Death by suicide: women per 100000 women	19,2	8,3	8,7	9,3	12,1
Deaths caused by road accidents per million inhabitants	228,2	229,4	248,6	153,7	94,9

1) Data for Kosovo and Metohia are not available.

2) Including data for Kosovo and Metohia for 1997.

**Population by age groups**

	1948	1953	1961	1971	1981	1991 <sup>1)</sup>
<b>Total</b>	<b>6527966</b>	<b>6979154</b>	<b>7642227</b>	<b>8446591</b>	<b>9313676</b>	<b>9778991</b>
<i>Age groups</i>						
0-19	2713539	2694904	2781165	2884978	2935939	2953350
20-39	1886147	2115613	2564317	2554947	2731997	2804518
40-59	1352689	1526063	1498256	1875702	2449322	2365603
60 and over	575292	641888	790485	1088067	1156776	1552052
Unknown	299	686	8004	42897	39642	103468
<i>Share in total population, %</i>						
Total	100	100	100	100	100	100
0-19	41,6	38,6	36,4	34,2	31,5	30,2
20-39	28,9	30,3	33,6	30,2	29,3	28,7
40-59	20,7	21,9	19,6	22,2	26,3	24,2
60 and over	8,8	9,2	10,4	13,4	12,9	16,9

<sup>1)</sup> Data for communes of Bujanovac and Preševo and Kosovo and Metohia are estimated.

**Agriculture population by activity**

	1948 <sup>1)</sup>	1953	1961	1971	1981	1991 <sup>2)</sup>
<b>Total</b>	<b>4720000</b>	<b>4656608</b>	<b>4290050</b>	<b>3719296</b>	<b>2285053</b>	<b>1694045</b>
Economically active	2563000	2485489	2269276	2069064	1371436	1040699
Dependants	2157000	2171119	2020774	1650232	913617	653346

<sup>1)</sup> Estimation of data for 1948 was done because of methodological differences in definition of activity in later censuses.

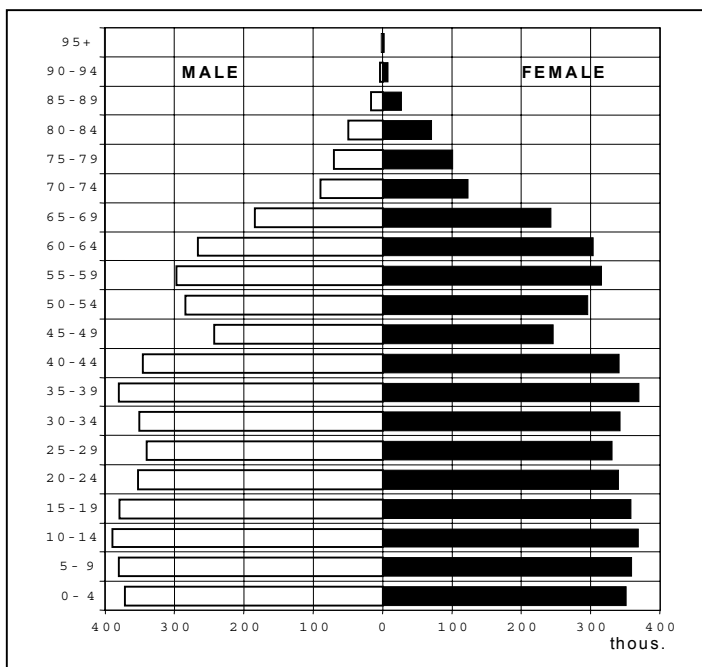
<sup>2)</sup> Data for communes of Bujanovac and Preševo and Kosovo and Metohia are estimated.

### Households according to number of members, by censuses

	1948	1953	1961	1971	1981	1991 <sup>1)</sup>
<b>Total</b>	<b>1485737</b>	<b>1616671</b>	<b>1929198</b>	<b>2248038</b>	<b>2568761</b>	<b>2707402</b>
1 member	178451	185089	251499	282866	340183	376704
2	216484	244364	316364	396731	512762	579166
3	227056	263235	337379	455015	518946	488547
4	238170	273654	366923	482528	584162	614568
5	205859	219647	257830	265535	247328	255054
6	156208	165764	176452	167976	164490	177936
7	101542	105354	97009	84789	79703	81532
8 members and more	161967	159564	125742	112598	121187	133895
Average number of members by household	4,39	4,32	3,96	3,76	3,63	3,61

<sup>1)</sup> Data for communes of Bujanovac and Preševo and Kosovo and Metohia are estimated.

### Age pyramid of population, 1991, Republic of Serbia



## Persons employed and salaries (wages) by sector of activities (Annual average)

	Employed, thous.		Salaries (wages) without taxes and contributions, dinars
	2000 <sup>1)</sup>	2001 <sup>1)</sup>	2001 <sup>1)2)</sup>
<b>Total</b>	1596,5	155,0	6078
Economic activities	1212,6	1191,4	5893
Non-economic activities	383,8	363,6	6678
Agriculture, forestry and water supply	81,2	76,1	5204
Fishing	1,0	1,0	6458
Mining and quarrying	38,1	36,2	8934
Manufacturing	593,8	570,6	5307
Electricity, gas and water supply	48,1	48,3	8688
Construction	92,7	84,4	5257
Wholesale and retail trade, repair	137,1	125,6	4668
Hotels and restaurants	34,7	35,6	4395
Transport, storage and communications	120,2	115,9	7465
Financial intermediation	43,8	40,9	10518
Real estate and renting activities	32,8	40,0	6962
Public administration and social security	60,6	62,8	8023
Education	112,9	114,9	6105
Health and social work	157,4	160,6	6441
Other community, social and personal service activities	42,3	41,6	6243

1) Excluding data for Kosovo and Metohia.

2) Estimate for the period January-May 2001.

## Unemployed<sup>1)</sup>

thous.

	1999 <sup>2)</sup>	2000 <sup>2)</sup>	2001 <sup>2)</sup>
<b>Total</b>	<b>687</b>	<b>722</b>	<b>769</b>
Women	393	411	432
Persons seeking work first time	436	449	475

1) Source: Republic Office of Labour Market.

2) Excluding data for Kosovo and Metohia.



## Gross domestic (material) product

	1996	1997	1998	1999 <sup>1)</sup>	2000 <sup>1)</sup>
Gross domestic (material) product (prices 1994), mill. din.	21821	23442	23993	18523	19582
Structure, %	100,0	100,0	100,0	100,0	100,0
Industry	37,9	39,0	39,7	36,4	38,3
Agriculture	19,8	19,7	18,7	22,0	17,9
Other activities	42,3	41,3	41,6	41,6	43,8
Share of public sector <sup>2)</sup> , %	65,0	63,7	62,9	57,3	59,5

1) Excluding data for Kosovo and Metohia.

2) Including cooperative, mixed and state ownership.

## Selected indicators of economic development

	Index 1996 = 100				
	1995	1997	1998	1999 <sup>1)2)</sup>	2000 <sup>1)2)</sup>
Gross domestic (material) product (prices 1994)	95,6	107,4	110,0	90,4	95,6
Public sector <sup>3)</sup>	94,3	105,2	106,4	78,8	86,5
Private sector	97,8	111,5	116,5	112,8	113,0
Gross fixed capital investment (prices 1994)	106,0	100,8	98,6	72,7	82,3

1) Excluding data for Kosovo and Metohia.

2) To ensure comparability indices are based on 1996 excluding data for Kosovo and Metohia.

3) Including cooperative, mixed and state ownership.

## Selected indicators of economic development (continued)

	Index 1999 <sup>1)</sup> = 100	
	2000 <sup>1)</sup>	2001 <sup>1)</sup>
Gross domestic (material) product (prices 1994)	105,7	112,3 <sup>2)</sup>
Physical volume of production		
Industry	111,4	111,5
Agriculture (net)	87,4	99,3
Transport	138,1	163,9
Retail trade	110,0	136,2 <sup>3)</sup>
Labour productivity in industry	116,9	121,7
Employed in all types of ownership	97,2	99,8
Producers' prices	202,6	187,7
Retail prices	170,0	191,8
Consumers' prices	179,6	193,3

1) Excluding data for Kosovo and Metohia.

2) Estimate.

3) Private sector - estimate.

## Enterprises by form of organization, ownership, origin of capital and selected sectors of activities

As of June 30<sup>st</sup> 2002

	Total	Agriculture	Manufacturing	Construction	Wholesale and retail trade, repair	Transport, storage and communication	Real estate and renting activities	Other <sup>1)</sup>
<b>Republic of Serbia</b>	<b>254168</b>	<b>7909</b>	<b>32085</b>	<b>7584</b>	<b>129416</b>	<b>11447</b>	<b>16595</b>	<b>49132</b>
<i>Form of organization</i>								
Partner association	7132	263	1442	253	3565	570	466	573
Companies with limited partnership	1090	46	226	38	480	99	74	127
Stock company	3753	187	1106	243	883	186	386	762
Onemember stock company	54	4	8	5	17	3	8	9
Limited joint companies	56942	1298	9698	2021	32683	3411	5615	2216
Onemember limited joint companies	27893	803	5715	1252	15638	1554	2058	873
Private enterprises	105701	2604	12471	2638	74523	5227	5316	2922
Social enterprises	3277	327	997	377	727	191	270	388
Public enterprises	778	41	40	132	8	42	90	425
Entrepreneur Bussines associations	88	1	36	1	25	7	4	14
Cooperatives	333	-	3	-	3	7	4	316
Financial organizations	5767	2246	182	537	392	100	2121	189
Institutions	228	-	-	-	-	-	1	227
Government bodies	3893	2	20	1	216	10	62	3582
Judiciary bodies	1176	-	-	-	-	-	-	1176
Units of local selfgovernment	505	-	-	-	-	-	-	505
Political organizations	4677	-	-	-	-	-	-	4677
Social organizations	377	-	-	-	-	-	-	377
Citizens associations	18159	-	-	-	-	-	-	18159
Other forms	9406	-	-	-	-	-	-	9406
	2939	87	141	86	256	40	120	2209

<sup>1)</sup> Including: Fishing; Mining and quarrying; Electricity, gas and water supply; Hotels and restaurants; Financial intermediation; Public administration and social security; Education; Health and social work; Other community, social and personal service activities; Private households with employees; Exterritorial organizations and bodies.

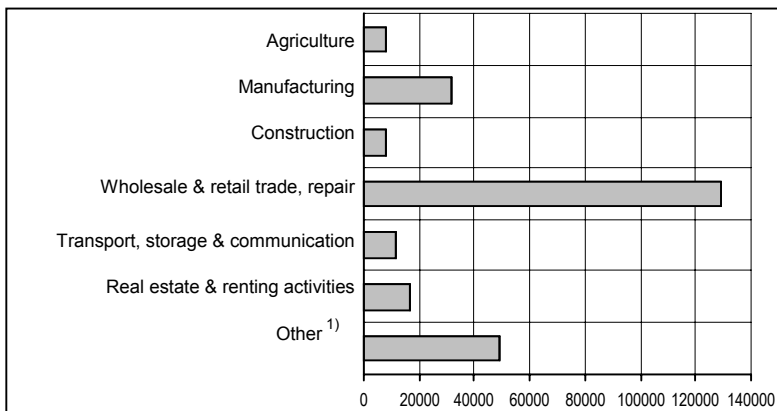
**Enterprises by form of organization, ownership, origin of capital and selected sectors of activities (continued)**

As of June 30<sup>st</sup> 2002

	Total	Agriculture	Manufacturing	Construction	Wholesale and retail trade, repair	Transport, storage and communication	Real estate and renting activities	Other <sup>1)</sup>
<i>Type of ownership</i>								
Social	7354	478	1541	597	1508	364	597	2269
Private	196963	4883	28857	6039	126065	10638	13169	7312
Cooperative	6009	2287	201	569	465	113	2143	231
Mixed	4777	243	1419	303	1343	305	544	620
State	2787	18	38	70	30	24	96	2511
Other	36278	-	29	6	5	3	46	36189
<i>Origin of capital</i>								
National	212082	7842	30830	7415	126329	11104	15914	12648
Foreign	1986	13	309	45	1177	108	246	88
Mixed	3822	54	917	118	1905	232	389	207
Other	36278	-	29	6	5	3	46	36189
Central Serbia	176455	4806	24003	5537	88657	7997	12976	32479
Belgrade	23097	219	3516	1003	9601	1042	2828	4888
Vojvodina	56228	2402	6608	1548	27496	2443	2835	12896
Kosovo and Metohia	21485	701	1474	499	13263	1007	784	3757

<sup>1)</sup> See previous page.

**Enterprises by selected sectors of activities  
- As of June 30<sup>st</sup> 2002 -**



## Shops by selected sectors of activities

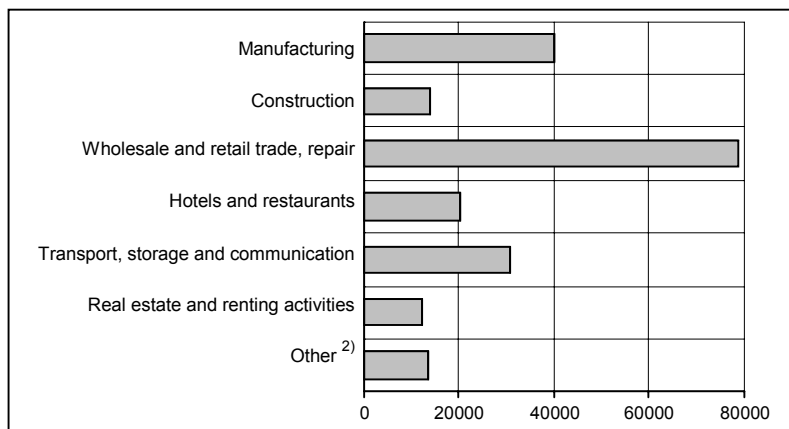
As of June 30<sup>st</sup> 2002

	Total <sup>1)</sup>	Manu- factur- ing	Const- ruction	Whole- sale and retail trade, repair	Hotels and resta- urants	Trans- port, storage and commu- nica- tion	Real estate and renting activities	Other <sup>2)</sup>
<b>Republic of Serbia</b>	<b>208999</b>	<b>39811</b>	<b>13725</b>	<b>78598</b>	<b>20390</b>	<b>30729</b>	<b>12132</b>	<b>13614</b>
Central Serbia	137335	25091	9777	52622	12138	20183	8360	9164
Belgrade	47053	7950	2892	17333	2342	8944	3943	3649
Vojvodina	51017	10565	3215	18361	5327	6771	3379	3399
Kosovo and Metohia	20647	4155	733	7615	2925	3775	393	1051

1) Excluding free activities (about 3500).

2) Including: Agriculture, hunting and forestry; Mining and quarrying; Electricity, gas and water supply; Financial intermediation; Public administration and social security; Education; Health and social work; Other community, social and personal service activities.

## Shops by selected sectors of activities

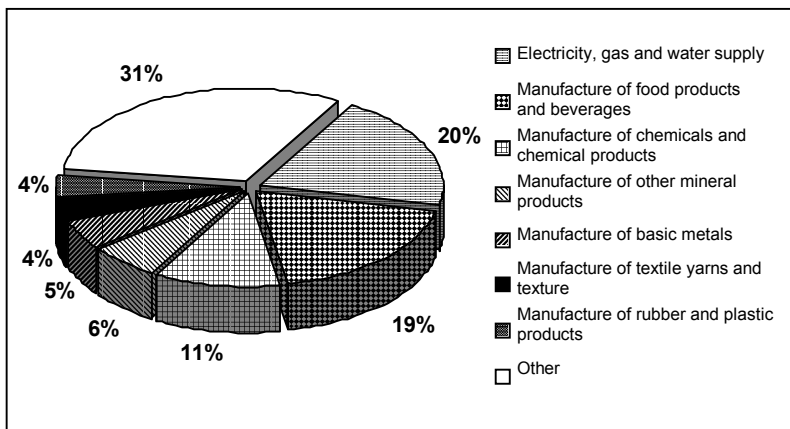
- As of June 30<sup>st</sup> 2002 -

## Production of major industrial products

	1999 <sup>1)</sup>	2000 <sup>1)</sup>	2001 <sup>1)</sup>
Electricity, milion KWh	31153	31704	32090
Coal, thousand tons	28999	32557	31049
Petroleum, thousand tons	705	805	746
Crude steel, thousand tons	142	596	488
Electrolytic copper, thousand tons	50	46	33
Refined lead, thousand tons	-	1	-
Machinery for use in construction, tons	1393	1789	1530
Agricultural machinery, tons	5363	6287	8499
Tractors, no.	1657	2310	1757
Trucks, tons	425	718	590
Automobiles, thousands	8	12	7
Television sets, thousands	13	5	5
Electro-thermal equipment for households, tons	9259	12018	11053
Household furniture, thousand suites	17	2172	19
Wool fabrics, thousand sq. m.	4645	4610	2887
Clothing, thousand sq. m <sup>2</sup> .	22562	29243	31002
Leather, footwear, thousand pairs	3397	3804	4183
Sugar, thousand tons	248	115	209
Edible oil, thousand tons	76	70	84
Canned meat, thousand tons	12	10	9

<sup>1)</sup> Excluding data for Kosovo and Metohia.

## Participation of selected fields in total industrial production, 2001

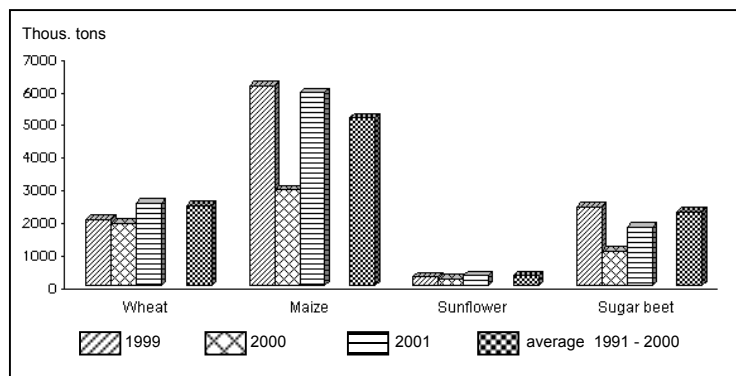


## Production of major agricultural products

	1999 <sup>1)</sup>	2000 <sup>1)</sup>	2001 <sup>1)</sup>
Wheat, thousand tons	2031	1924	2530
- yield in tons per hectare	3,29	2,96	3,66
Maize, thousand tons	6126	2935	5910
- yield in tons per hectare	4,85	2,44	4,86
Sugar beet, thousand tons	2428	1070	1806
- yield in tons per hectare	41,29	23,94	41,85
Sunflower, thousand tons	273	218	318
- yield in tons per hectare	1,48	1,49	1,95
Meat total, thousand tons	520	518	455
Beef meat, thousand tons	97	103	93
Pork meat, thousand tons	292	283	254
Mutton meat, thousand tons	17	19	17
Poultry meat, thousand tons	71	67	62
Milk total, million litres	1665	1585	1594

<sup>1)</sup> Excluding data for Kosovo and Metohia.

**Production of major agricultural products in period of 1999-2001**  
- Republic of Serbia -



## Consumption of selected food products per household member

in kg

	All households		Non-agricultural households	
	1991	2001 <sup>1)</sup>	1991	2001 <sup>1)</sup>
Wheat and rye flour	65,1	32,0	32,6	16,4
Maize flour and maize	8,1	...	4,5	...
Potatoes	33,5	36,3	33,7	34,3
Other vegetables <sup>2)</sup>	74,3	75,6	76,4	73,0
Fresh fruit and grapes	56,8	48,2	63,8	47,3
Meat	45,3	32,4	45,1	29,2
Fresh fish	3,9	3,3	4,5	3,2
Edible oil, litres	9,7	8,5	11,6	9,2
Animal and vegetable fats	8,3	6,7	6,9	5,1
Milk, litres	98,1	89,2	105,0	89,4
Dairy produce	14,7	9,5	15,9	8,7
Eggs, no.	165,1	187,3	170,6	185,2
Sugar	15,7	11,0	15,5	9,7

<sup>1)</sup> Excluding data for Kosovo and Metohia.

<sup>2)</sup> Other fresh and processed vegetables.

## Structure of average annual personal consumption of households

in %

	All households		Non-agricultural households	
	2000 <sup>1)</sup>	2001 <sup>1)</sup>	2000 <sup>1)</sup>	2001 <sup>1)</sup>
<b>Expenditures</b>	<b>100,0</b>	<b>100,0</b>	<b>100,0</b>	<b>100,0</b>
Food	51,6	56,4	49,9	56,6
Beverages and tobacco	8,3	7,9	8,5	7,4
Clothing and footwear	7,4	6,6	7,8	6,4
Rent and other housing expenses	1,4	1,4	1,8	1,8
Fuel and lighting	11,5	9,2	10,8	8,6
Furnishings	1,6	1,5	1,4	1,4
Toilet requisites and health care	6,3	5,7	6,7	5,6
Education, culture and entertainment	2,3	2,3	2,7	2,6
Transport and PTT services	7,0	6,5	7,7	6,7
Other goods and services	2,6	2,5	2,7	2,9

<sup>1)</sup> Excluding data for Kosovo and Metohia.

**Housing construction**

	1961	1971	1981	1991
Living space per capita, sq. m.	10,7	12,4	16,8	19,6
Dwelling units completed				
In public sector	14598	17477	21341	9066
In private sector	22434	30798	35946	18639

**Transport**

	1999 <sup>1)</sup>	2000 <sup>1)</sup>	2001 <sup>1)</sup>
Railway track, km	3809	3809	3809
Standard gauge	3809	3809	3809
Electrified	1196	1196	1196
Roads, km	38105	37937	38064
Asphalt and concrete	23765 *	23789 *	23784
Number of aircraft seats	4441	4379	4371
Trucks, thousands	118	125	125 <sup>2)</sup>
Passenger cars, thousands	1274 *	1274 <sup>3)</sup>	1274 <sup>3)</sup>

1) Excluding data for Kosovo and Metohia.

2) 2000

3) 1999

**Hotels catering and tourism**

	1999 <sup>1)</sup>	2000 <sup>1)</sup>	2001 <sup>1)</sup>
Beds	104058	92465	92490
In hotels	38598	35016	35340
In camps	5366	5320	5320
In private houses	22122	20589	20226
Tourists, thousands	1444	2169	2129
Foreign tourists	124	166	243
Tourists days, thousands	5468	7696	7195
Foreign tourists	343	431	593

1) Excluding data for Kosovo and Metohia.



## Exports and imports by economic end - use

in million US dollars

	1999 <sup>1)</sup>	2000 <sup>1)</sup>	2001 <sup>1)</sup>
Exports - total	1369	1558	1721
Reproduction goods	748	879	913
Capital goods	102	121	157
Consumer's goods	519	558	651
Imports - total	2881	3330	4261
Reproduction goods	1971	2331	2852
Capital goods	475	532	672
Consumer's goods	435	467	737

<sup>1)</sup> Excluding data for Kosovo and Metohia.

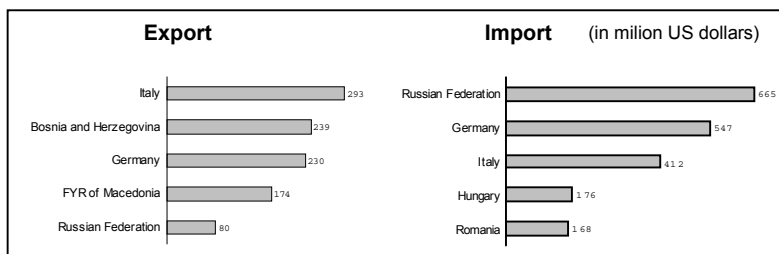
## Exports and imports by groups of countries

in million US dollars

	1999 <sup>1)</sup>	2000 <sup>1)</sup>	2001 <sup>1)</sup>
Exports - total	1369	1558	1721
Developed countries	602	715	851
EU	531	635	800
Developing countries	60	120	105
Countries in transition	707	723	765
Imports - total	2881	3330	4261
Developed countries	1466	1595	2015
EU	1193	1306	1671
Developing countries	228	227	257
Countries in transition	1187	1508	1989

<sup>1)</sup> Excluding data for Kosovo and Metohia.

## Major foreign trade partners of the Republic of Serbia, 2001



## Pupils and students

	1998/99	1999/2000	2000/2001
Primary schools <sup>1)</sup>	750552	726418*	716347
Secondary schools <sup>1)</sup>	317508	323892*	316858
Higher schools	43861	61033	...
University faculties	153341	156754	...

<sup>1)</sup> Regular, special and education of adults.

## School-leavers and graduates

	1998/99	1999/2000	2000/2001
Primary schools <sup>1)</sup>	99960	97165*	92837
Secondary schools <sup>1)</sup>	83022	82150*	81198
Higher schools	4691	4516*	5127
University faculties	11882	11710*	11879

<sup>1)</sup> Regular, special and education of adults.

## Teachers in elementary and secondary schools (Census)

	1976	1986	1996 <sup>1)</sup>
<b>Total</b>	<b>77651</b>	<b>83066</b>	<b>89270</b>
Elementary schools	55496	59675	63516
Secondary schools	22155	23391	25754

<sup>1)</sup> Estimated number of Albanian teachers in Kosovo and Metohia is included.

## Radio stations

	Total number of stations	Radio transmitters by frequency band				Radio broadcasting hours (in thousands)		
		Number		Power in KW		Total	Music programmes	Speech programmes
		Total	FM	Total	FM			
1998 <sup>1)</sup>	124	466	282	6290	288	624	318	306
1999 <sup>1)</sup>	127	366	768	5336	509	645	323	312
2000 <sup>1)</sup>	162	469	302	(1108)	(52)	927	486	441

<sup>1)</sup> Excluding data for Kosovo and Metohia.

**Culture and the arts**

	1999 <sup>1)</sup>	2000 <sup>1)</sup>	2001 <sup>1)</sup>
Published books and brochures	5588	5633	5734
Circulation, thousands	9130	10685	10779
Professional theatres	39	42	41
Attendances per thousand of the population	119	100	98
Cinemas	151	152	149
Attendances per 1000 population	505	481	524
Long feature films	2	1	8 <sup>2)</sup>
Short films	31	42	19
National libraries	...	...	...
Books and brochures (in thousand copies)	...	...	...
Museums <sup>3)</sup>	130	-	120
Attendances per 1000 population <sup>3)</sup>	223	-	143

<sup>1)</sup> Excluding data for Kosovo and Metohia.

<sup>2)</sup> Preliminary data.

<sup>3)</sup> Data relate to 1997 and 2000.

**Registered cultural monuments by type (Census)**

	1987	1997 <sup>1)</sup>
<b>Total</b>	<b>1815</b>	<b>2347</b>
Archeological finds	105	197
Area and construction entireties - settlements	123	81
Residential architecture	301	508
Public architecture	229	230
Religious architecture	606	721
Military architecture	60	65
Architecture for economic purposes	106	204
Memorial architecture	285	341

<sup>1)</sup> Relate to 1995.

**Newspapers by time of publication and publishers <sup>1)</sup>**

	Total	Daily	Weekly & several times a week	Fort- nightly	Monthly	Occa- sional
	<i>Number</i>					
1999	541	15	69	84	160	213
2000	579	16	68	78	164	253
2001	576	24	73	84	174	221
<i>Of which: Religious organisations</i>	23	-	1	1	7	14
	<i>Total circulation in thousands</i>					
1999	259788	200314	30219	12331	7387	8536
2000	302811	233098	37244	15457	8829	8185
2001	358574	278935	38782	20099	11194	9563
<i>Of which: Religious organisations</i>	680	-	315	156	113	85

<sup>1)</sup> Excluding data for Kosovo and Metohia.

**Papers and magazines in the languages of the nationalities** <sup>1)</sup>

	Total	Albanian	Bulgarian	Czech and Slovak	Italian	Hungarian	Romanian & Russian	Turkish
<i>Number of papers</i> <sup>2)</sup>								
1999	43	1	2	7	-	20	13	-
2000	44	-	2	7	-	23	12	-
2001	34	-	2	8	-	14	10	-
<i>Circulation of papers in thousands</i> <sup>3)</sup>								
1999	6295	-	126	371	-	5541	257	-
2000	6278	-	10	388	-	15540	250	-
2001	6037	-	114	300	-	5391	231	-
<i>Number of magazines</i>								
1999	16	-	1	4	-	6	5	-
2000	19	-	1	5	-	9	4	-
2001	17	-	1	4	-	8	4	-
<i>Circulation of magazines in thousands</i> <sup>3)</sup>								
1999	45	-	1	24	-	14	6	-
2000	48	-	1	20	-	20	7	-
2001	40	-	2	20	-	14	4	-

1) Excluding data for Kosovo and Metohia.

2) Including multilingual papers.

3) Including circulations of papers and magazines published.

**Public health**

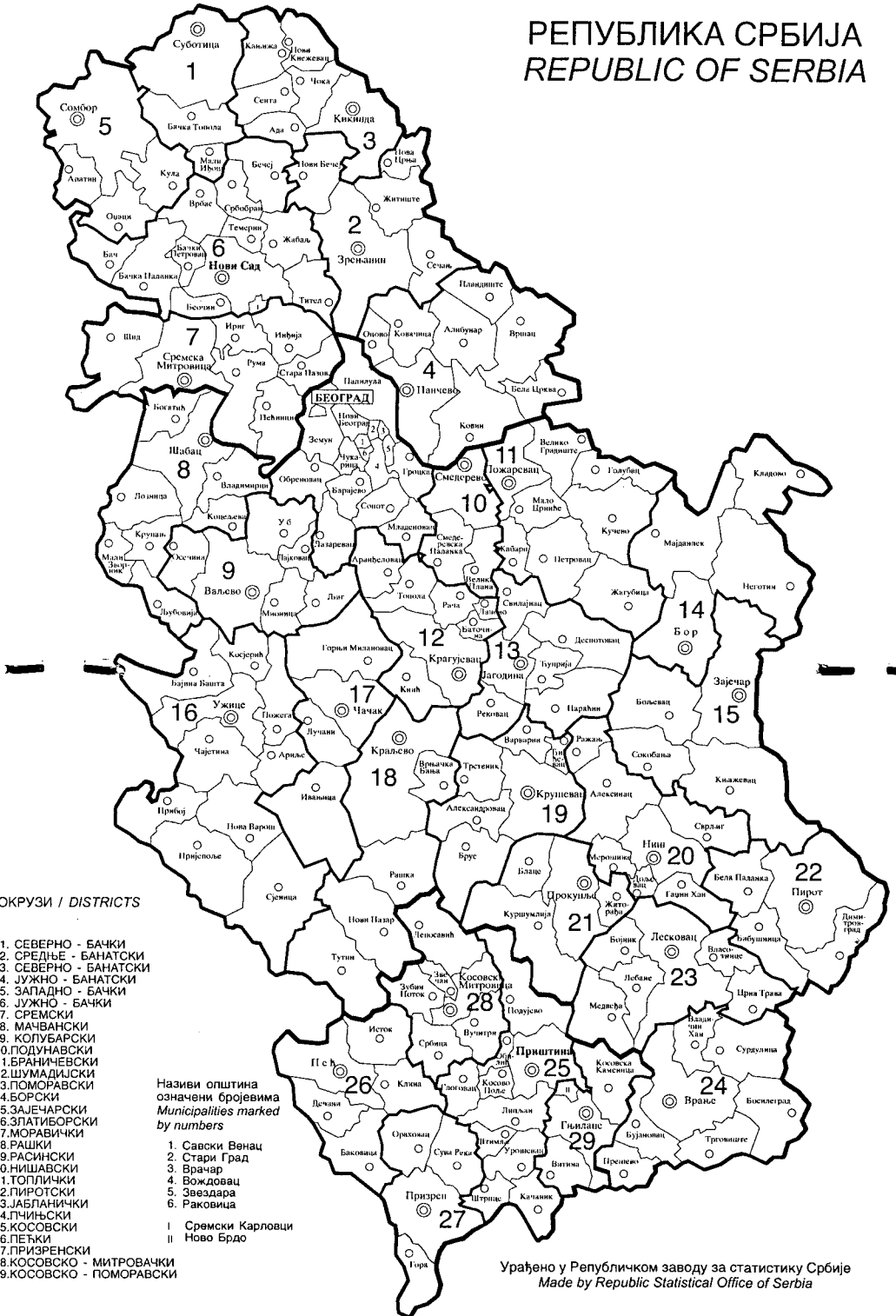
	1998 <sup>1)</sup>	1999 <sup>1)</sup>	2000 <sup>1)</sup>
Physicians and dentists <sup>2)</sup>	19478	19425	19439
No. of persons per physician	401	401	399
Hospital beds, thousands <sup>3)</sup>	48	48	47
No. of persons per hospital bed	162	163	165
No. of persons medically treated per hundred deaths	93,0	92,4	92,3

1) Excluding data for Kosovo and Metohia.

2) Source: Office for Health Care of Serbia.

3) Source: Federal Institute of Public Health.

# РЕПУБЛИКА СРБИЈА REPUBLIC OF SERBIA



**ОКРУЗИ / DISTRICTS**

1. СЕВЕРНО - БАЧКИ
2. СРЕДЊЕ - БАНАТСКИ
3. СЕВЕРНО - БАНАТСКИ
4. ЈУЖНО - БАНАТСКИ
5. ЗАПАДНО - БАЧКИ
6. ЈУЖНО - БАЧКИ
7. СРЕМСКИ
8. МАЧВАНСКИ
9. КОЛУБАРСКИ
10. ПОДУНАВСКИ
11. БРАНИЧЕВСКИ
12. ШУМАДИЈСКИ
13. ПОМОРАВСКИ
14. БОРСКИ
15. ЗАЈЕЧАРСКИ
16. ЗЛАТИБОРСКИ
17. МОРАВИЧКИ
18. РАШКИ
19. РАСКИ
20. НИШАВСКИ
21. ТОПЛИЧКИ
22. ПИРОТСКИ
23. ЈАБЛАНИЧКИ
24. ПЧИЊСКИ
25. КОСОВСКИ
26. ПЕТКИ
27. ПРИЗРЕНСКИ
28. КОСОВСКО - МИТРОВАЧКИ
29. КОСОВСКО - ПОМОРАВСКИ

Називи општина  
означени бројевима  
*Municipalities marked  
by numbers*

1. Савски Венац
2. Стари Град
3. Брачар
4. Вождовац
5. Звездара
6. Раковица

- I Сремски Карловци
- II Ново Брдо

Урађено у Републичком заводу за статистику Србије  
*Made by Republic Statistical Office of Serbia*